



Copy 20



L PROGRAM OBJECTIVES

- HIGH RESOLUTION.
- SPECIFIC OBJECTIVE TARGETING.
- OPERATIONAL FLEXIBILITY.

ALTERNATE TARGET PROGRAMS - GROUND SELECTABLE.

STEREO/MONO- PROGRAM VARIABLE IN SAME MISSION.

RAPID START/STOP OPERATION - FOR SHORT BURST
OPERATION - CONSERVES FILM - NO OVERLAP LOSS.

ROLL STEERING $\pm 30^\circ$ FROM VERTICAL.

MISSION LIFE 4 DAYS

- STELLAR/INDEX CAMERA

Declassified and Released by the N R C

In Accordance with E. O. 12958

on NOV 26 1997



L PROGRAM CHARACTERISTICS

DESIGN ALTITUDE N. MI. 110
ALTITUDE RANGE N. MI. 90-175
LENS SCALE AT 110 N. MI. 66" f/5
1:120,000

● RESOLUTION

LENS/FILM (HIGH/2:1 AWAR L/mm) 175/120
CAMERA (HIGH/2:1 AWAR L/mm) 130/80
GROUND RESOLUTION (HIGH/2:1) @ 110 N. MI. 3/5 ft

● FILM

WIDTH (INCHES) 5
FORMAT 25 x 4.5
CAPACITY (FT) 8,000

● PHOTO COVER

FRAME SIZE (N. MI.) 7.5 x 42.3
VERTICAL COVER (10% OVERLAP) 1,000,000
BURST SIZE 60 x 42.3

● LATITUDE

COVERAGE (4/10 - 9/5) TO 75° N

ORBIT

~~SECRET~~

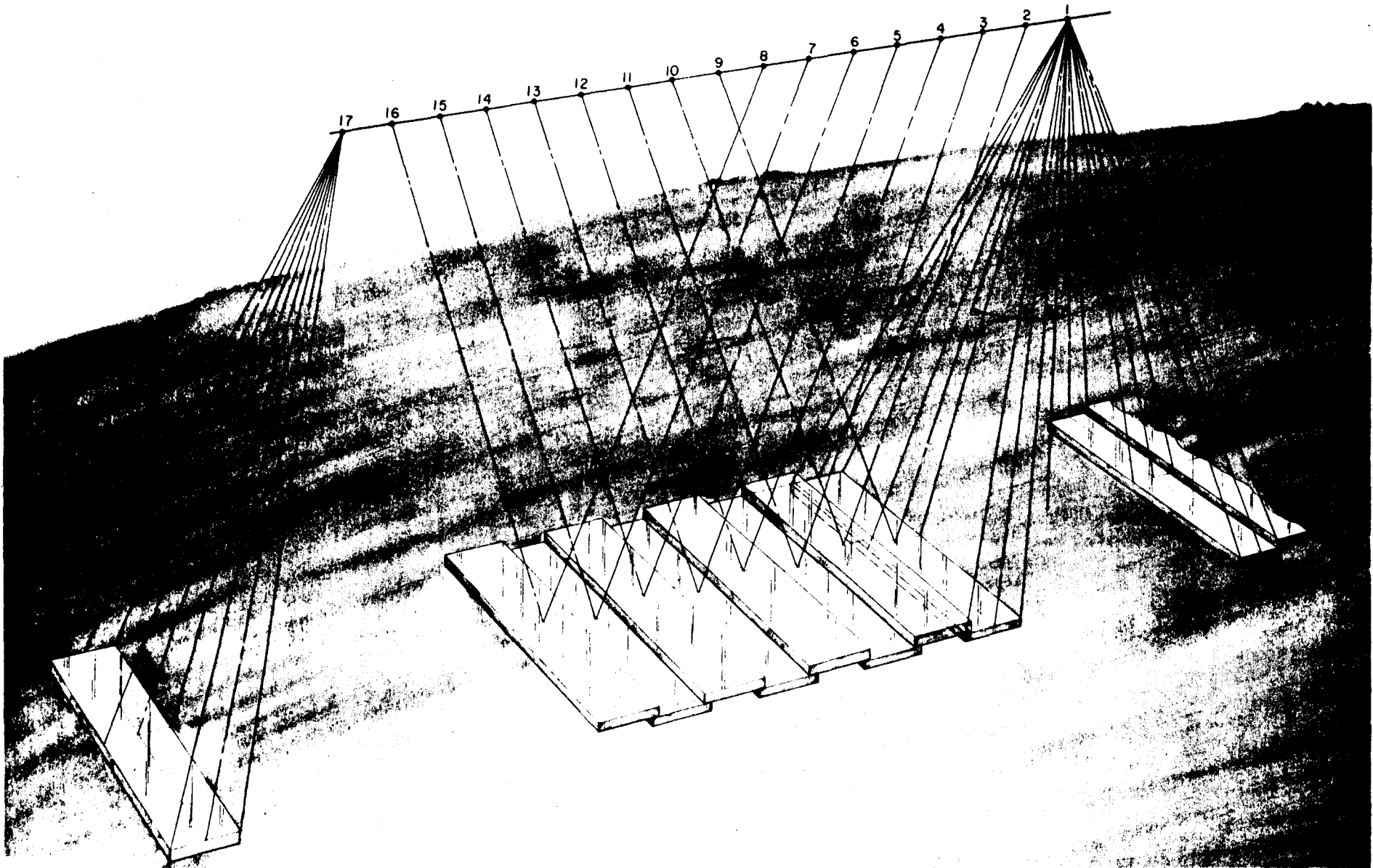
WEIGHT

STRUCTURE & THERMAL SHIELDS	130 ^{LBS}
SCAN DRIVE ASSEMBLY (<i>178 LB LENS</i>)	270
PLATEN ASSEMBLY	20
FILM TRANSPORT MECHANISM	35
MIRROR DRIVE ASSEMBLY (<i>40 LB. MIRROR</i>)	60
ELECTRONICS & CABLES	75
MISC.	20
TOTAL PANORAMIC CAMERA	610 ^{LBS}
CASSETTE	15
FILM	75
STELLAR INSTRUMENT	20
TOTAL PHOTO SYSTEM	720 ^{LBS}

~~SECRET~~

07/17/77

[REDACTED]



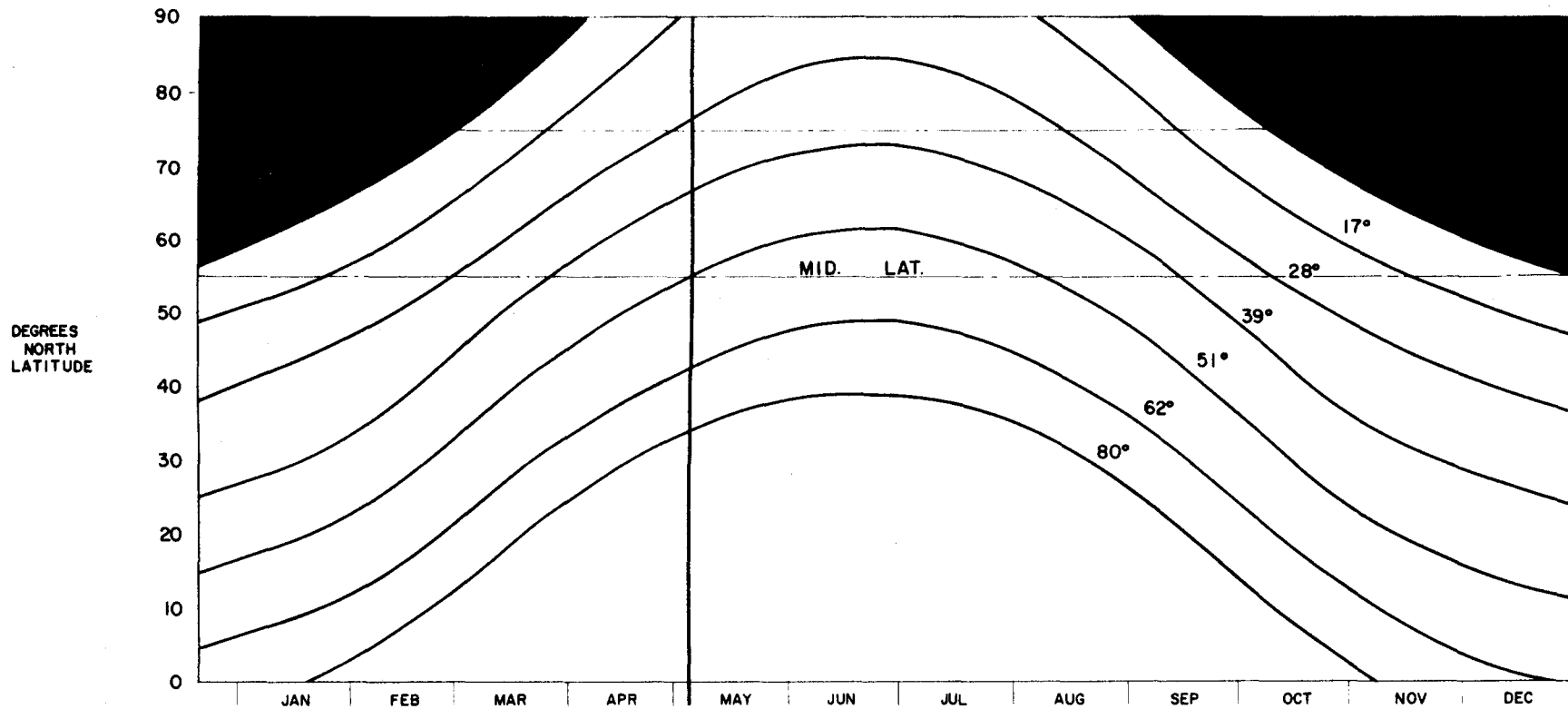
[REDACTED]

170 177

SECRET



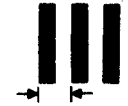
SUN ANGLE AS A FUNCTION OF LATITUDE



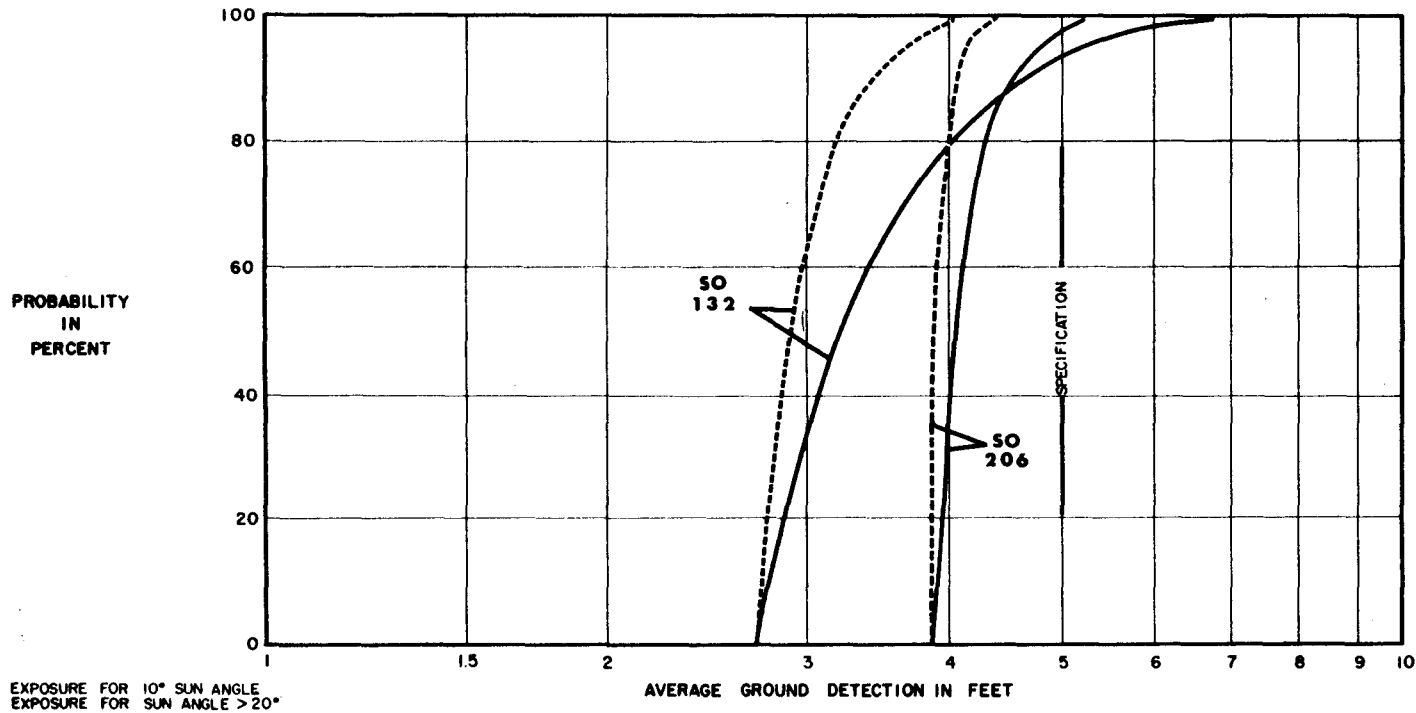
SECRET

STEREO PAN CAMERA SYSTEM

PROBABILITY OF ACHIEVING A GIVEN GROUND DETECTION



GROUND DETECTION
FROM
90 N.M.

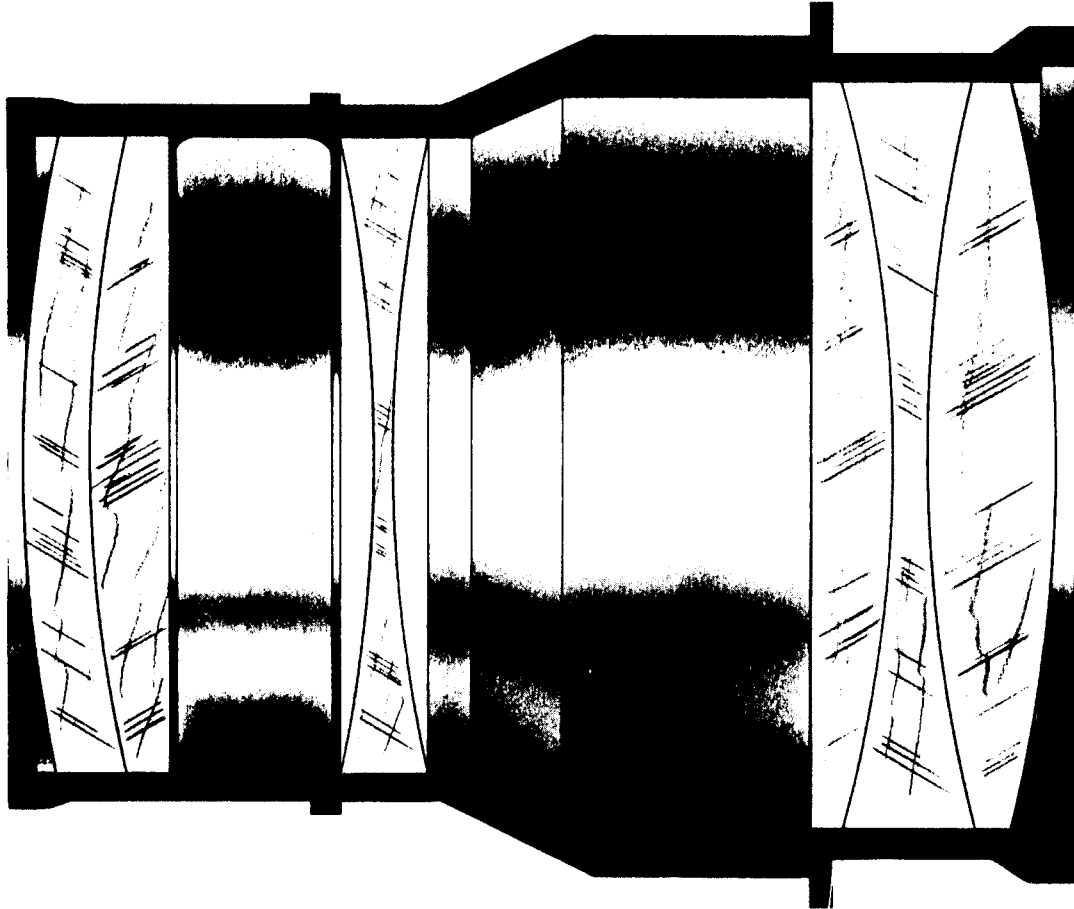


SO 132 SO 206

EXPOSURE FOR 10° SUN ANGLE
EXPOSURE FOR SUN ANGLE > 20°

2:1 CONTRAST IMC $\bar{Q} = 0.417$ mR/SEC

071015

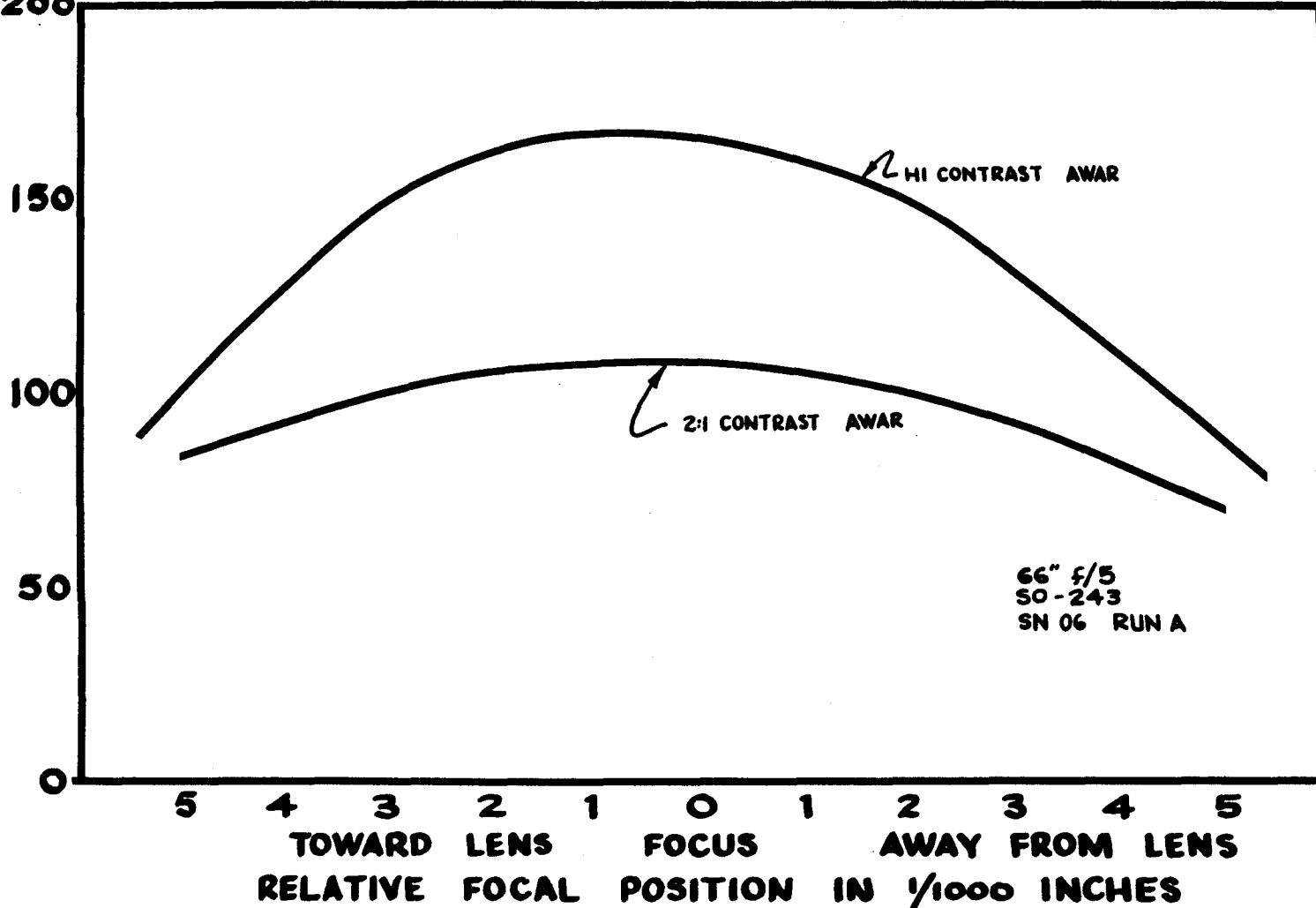


071015

~~CONFIDENTIAL~~

LENS / FILM RESOLUTION

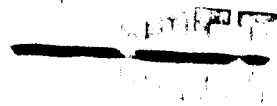
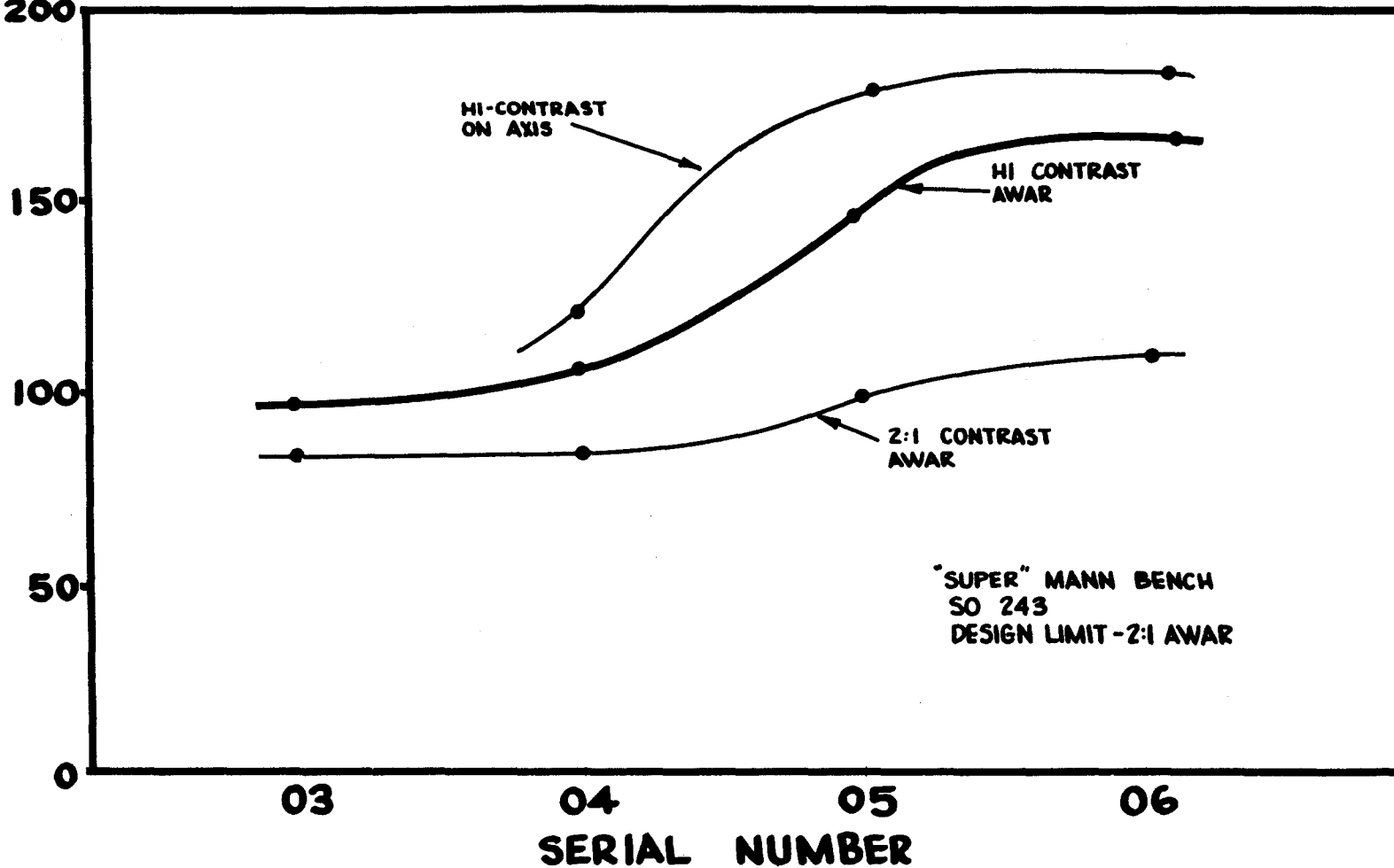
RESOLUTION
LINES/mm
200



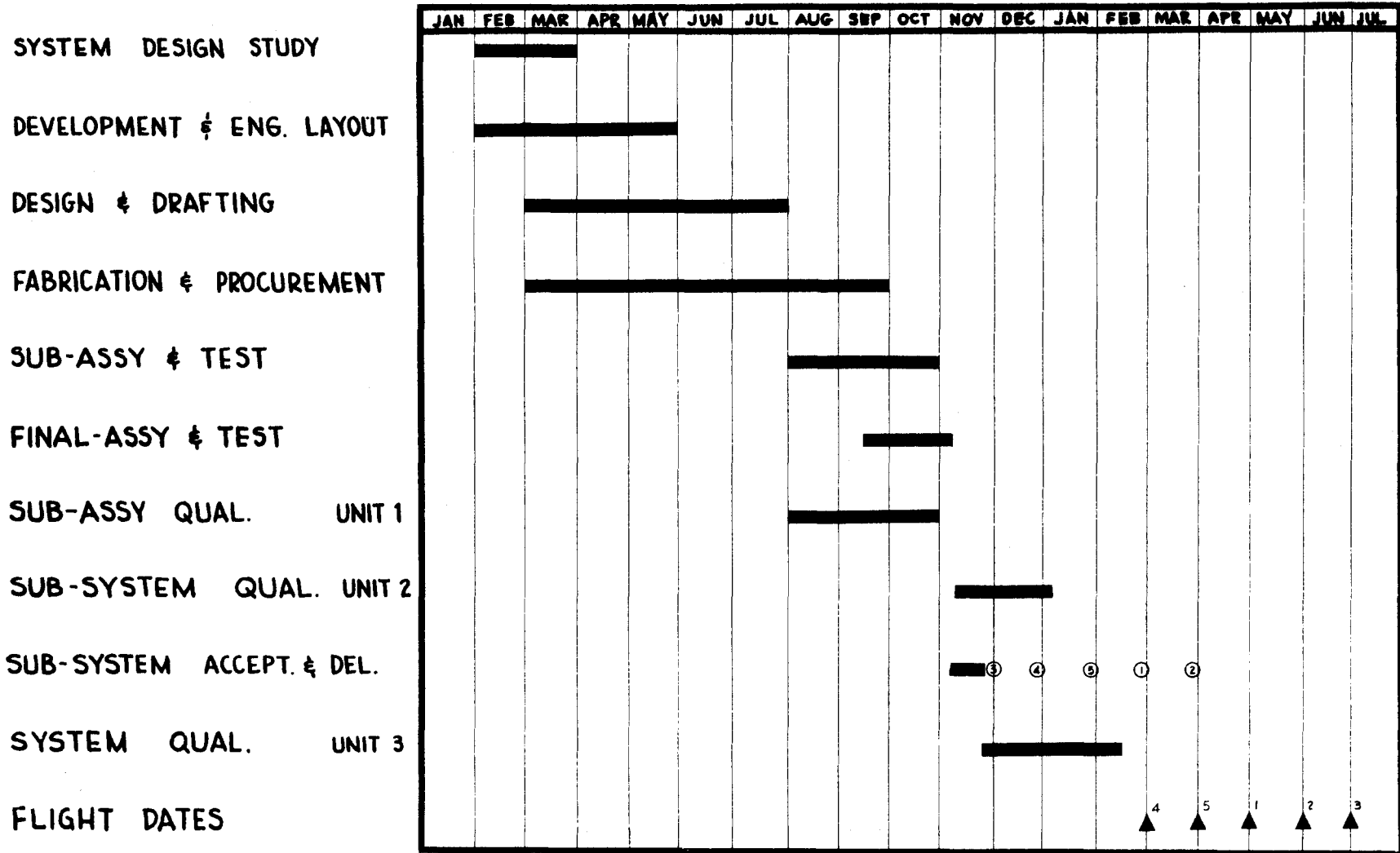
~~CONFIDENTIAL~~

66" f/5 PANORAMIC LENS

RESOLUTION
LINES/mm
200

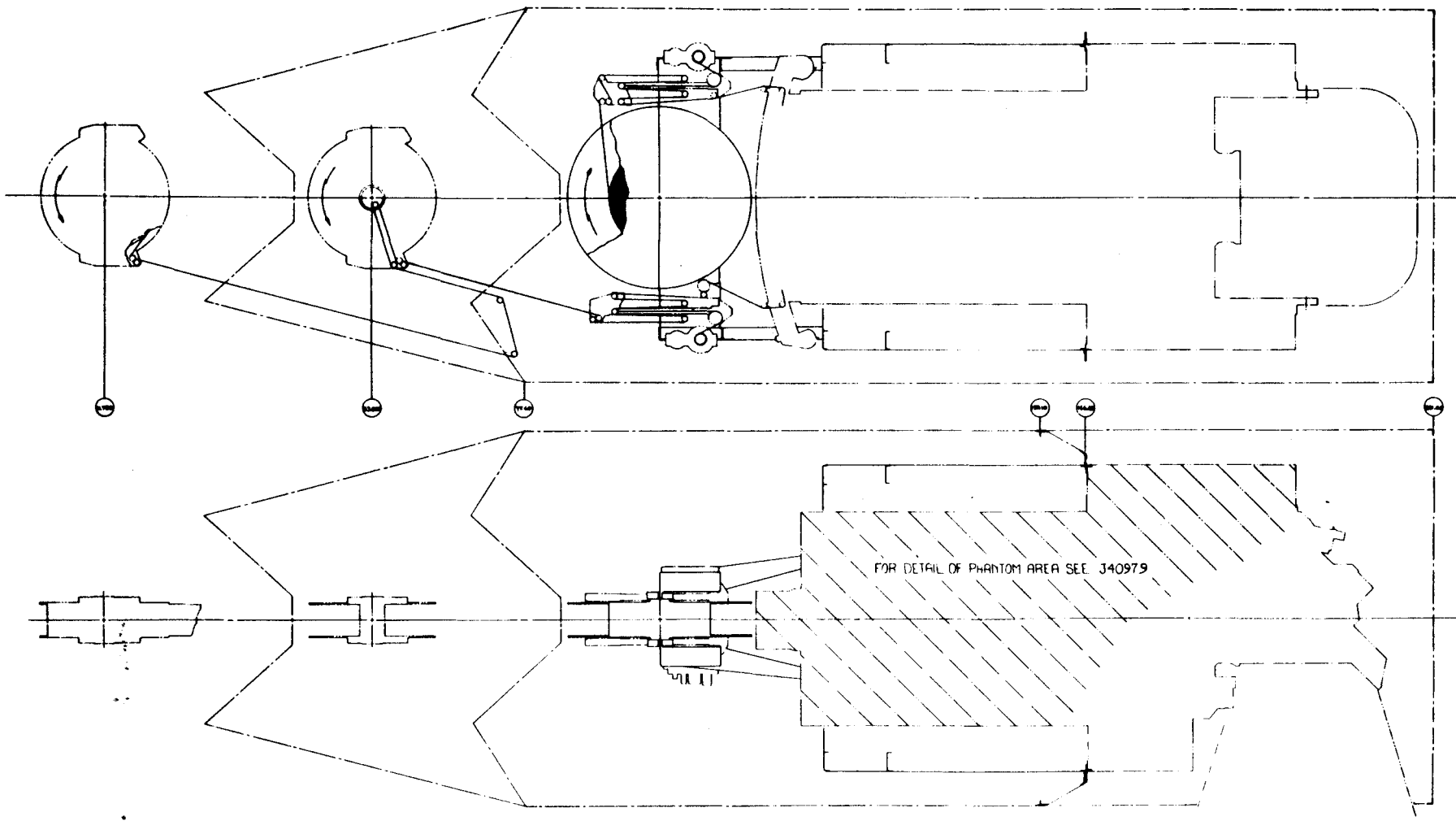


L PAN CAMERA



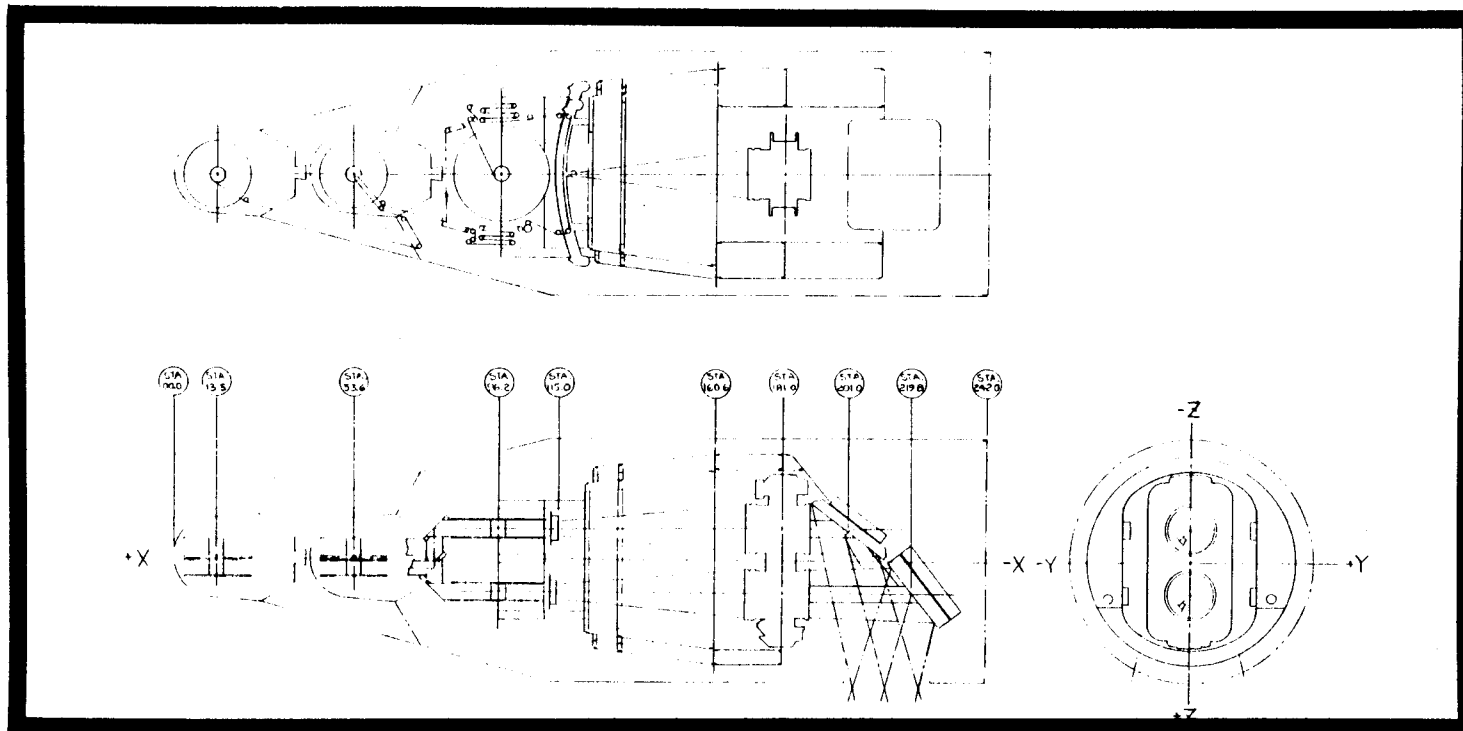
CONFIDENTIAL

[REDACTED]



[REDACTED]

01/11/79



QUAD "L"

"L" COVERAGE WITH EITHER CONTINUOUS STEREO COVERAGE OR 40° STEREO SWATH

WEIGHT ESTIMATE:

OUTER STRUCTURE INCLUDING ROLL JOINT	1040 LBS
PAN INSTRUMENT	1150 LBS
MARK 8 RECOVERY SYSTEM WITH CASSETTE	415 LBS
FILM	320 LBS
TOTAL	<u>2925 LBS</u>