

cy
14 00027500

D/OSP
DD/OSP
EO/OSP

~~TOP SECRET~~

[Redacted]

Cyr

c/s
MANAGERS' MEETING

10 JANUARY 1967

Declassified and Released by the NRO

In Accordance with E. O. 12958

on NOV 26 1997

~~TOP SECRET~~

[Redacted]

~~TOP SECRET~~

TABLE OF CONTENTS

<u>ITEM</u>	<u>PAGES</u>
J-1 SYSTEM STATUS	1
J-1 PROBLEMS	2 - 4
J-3 SYSTEM STATUS	5 - 6
J-3 PROBLEMS AND ACTIONS	7 - 9
J-3 DESIGN REVIEW STATUS	10
J-3 SYSTEM SPECIFICATIONS	11
J-3 INTERFACE DRAWING STATUS	12
OPERATIONS & ANALYSIS	13

~~TOP SECRET~~

J1 SYSTEM STATUS

- o SYSTEM TEST
- o J-34 REMOVED FROM STORAGE FOR 14 JANUARY LAUNCH
- o J-39 REMOVED FROM STORAGE FOR J-34 BACKUP (CURRENTLY SCHEDULED FOR FEBRUARY LAUNCH)
- o J-35)
J-37) IN STORAGE (SEE PAGE 3)
J-40-44)
- o J-45 RECEIVED ON SCHEDULE

J-1 PROBLEMS

o SYSTEM TEST

o LOST TIME ON PAYLOAD SYSTEMS AS FOLLOWS

<u>PAYLOAD</u>	<u>DAYS LOST</u>	<u>REASONS</u>
J-43	1½	HO PROBLEM - LAMPS REPLACED AND SOLENOID CLEANED (STICKY CLAMPING). SCAN HEADS AND SLITS MODIFIED (SHRINK MARKERS CUT OFF).
J-44	4	DETENTS REMORKED. SHUTTLE BEARING PROBLEM CORRECTED.
J-45	2	RESISTOR CHANGED ON S/C (SLACK PROBLEM).
	1	BINARY LAMPS REPLACED, OVER CURRENT PROBLEM WHILE AT BOSTON. FEDR THERE BUT NO ACTION TAKEN.

o T.C. PROGRAMMERS

- G.E.'S PROMISED DELIVERY OF 1 PROGRAMMER PER WEEK IS NOT BEING MET. ONLY THREE OF THE SIX UNITS PROMISED HAVE BEEN RECEIVED TO DATE. DUE TO THESE SLIPS, ONE PROGRAMMER HAD TO BE PULLED FROM J-45B, PLACED ON J-39 AND RETESTED.

~~TOP SECRET~~

J-1 PROBLEMS (CONTINUED)

o G.E. ELECTRIC BALLASTS

ECD WAS 29 DECEMBER 1966. TO DATE NO HARDWARE HAS BEEN RECEIVED.

o FOREBODIES

- J-35 - FOREBODIES WENT OUT-OF-DATE, RETURNED TO PHILADELPHIA.
- J-37 - FOREBODIES REMOVED AND DESIGNATED FOR J-35.
- J-41 - SPARE FOREBODIES TO BE MADE AVAILIABLE FOR J-41.
- J-44 - FOREBODIES TO BE REMOVED AND DESIGNATED FOR J-37. NEW FOREBODIES TO BE MADE AVAILIABLE.

o DFD SHORTAGES

- J-41 - S/N 104 AND 103 HAVE GATE FAILURES. AWAITING PARTS FROM BOSTON.
- J-42 - S/N 107 AVAILABLE. STILL SHORT ONE.
- J-43)
- J-44) - NO DFD'S AVAILIABLE.
- J-45)

o MANUFACTURING

o NO PROBLEMS TO REPORT.

o ENGINEERING

o J-40 DOOR REWORK AND REQUAL, SUCCESSFUL.

~~TOP SECRET~~

~~TOP SECRET~~

J-1 PROBLEMS (CONTINUED)

LOL/LCL DATES VS. FOREBODY SCHEDULES

- o THE UTILIZATION OF NEW FOREBODIES AND REALIGNMENT OF PAYLOAD SCHEDULE RESULTS IN ALLEVIATION OF CONFLICTS.

(SEE PAGE 17.)

~~TOP SECRET~~

~~TOP SECRET~~

J-3 SYSTEM STATUS

o MOCK UP

OVER 90% COMPLETE. PMU NOW IN WORK, 70% COMPLETE.

REMAINING EFFORT CONSISTS OF TUNA, FELT DOOR, ROLLER BOX AND CHUTES, AND MINOR ELECTRICAL WORK.

o STV

CONIC COMPLETION HAS SLIPPED TO 11 JANUARY DUE TO LATE DELIVERY OF PIN PULLER COMPONENTS. ECD FROM VENDOR IS 9 JANUARY.

o QR-2 MECHANICAL

DISIC PAYLOAD CHUTE ASSEMBLY ADHESIVE PROBLEM HAS BEEN RESOLVED. FAIRING WILL SLIP TO 16 JANUARY BECAUSE OF CURING TIME REQUIRED (8 DAYS).

REJECTION OF FELT SEAL MOUNTING BRACKETS HAS DELAYED THE DELIVERY OF THE CONIC. ECD 14 JANUARY. ECD FOR BARREL IS 10 JANUARY.

o QUAL AND QR-2 ELECTRICAL

LATE ENGINEERING AND PARTS PROCUREMENT PROBLEMS HAVE CAUSED SLIPPAGE OF ALL J-BOXES EXCEPT FORWARD T/M, FORWARD POWER, PYRO AND COMMAND BOXES.

HARNESSES FOR QR-2 WILL BE COMPLETED ON SCHEDULE.

~~TOP SECRET~~

~~TOP SECRET~~

J-3 SYSTEM STATUS (CONTINUED)

○ ELECTRICAL AGE

LATE ENGINEERING AND PROCUREMENT PROBLEMS HAVE SIMILARLY AFFECTED QUAL TEST PANELS AND OTHER G.S.E.

○ ENGINEERING RELEASES TOTAL 1640 SINCE GO-AHEAD.

○ SYSTEM TEST

- FORWARD POWER BOX - ACCEPTANCE TESTS COMPLETED ON UNITS FOR QR2 AND CRL. BOTH UNITS RETURNED TO MANUFACTURING FOR INSTALLATION.
- FORWARD T/M BOX - ACCEPTANCE TESTS COMPLETED ON QR2 UNIT. UNIT RETURNED TO MANUFACTURING FOR INSTALLATION.
- STV BARREL - MAIN PETAL EJECTION TEST WAS COMPLETED 12/28/66.
- QR2 - INSTRUMENTS ARRIVED 5 JANUARY.
- PYRO BOX - 75% OF QUAL COMPLETED.

~~TOP SECRET~~

J3 ACTIONS

~~TOP SECRET~~

- WRITTEN OR TWX DATA UPDATING AND CONFIRMING WEIGHT AND POWER STATEMENTS REQUIRED FOR ALL ASSOCIATES BY 27 JANUARY 1967.

- DECISION REQUIRED ON PHILOSOPHY OF SRV BALLAST DESIGN (FIXED VS. SWING-DOWN), IN ORDER TO AVERT SCHEDULE DELAYS DUE TO BALANCING DIFFERENCES.

~~TOP SECRET~~

~~TOP SECRET~~

J3 PROBLEMS - MANPOWER

o THE MANUFACTURING, ENGINEERING AND SYSTEMS TEST EFFORTS ARE BEING HAMPERED SIGNIFICANTLY BY THE UNAVAILABILITY OF PERSONNEL STILL BEING CLEARED. SCHEDULES WHICH WERE DEVELOPED INCLUDED AVAILABILITY OF SERVICES OF NEW HIRES AFTER A REASONABLE CLEARANCE SPAN; HOWEVER, MANY OF THE PEOPLE HAVE BEEN IN THE TRAILER OR AT SUNNYVALE IN EXCESS OF EXPECTED SPANS. PROMISED DATES OF CLEARANCE COMPLETION HAVE SLIPPED, AND NEW DATES ARE NOT COMPATIBLE WITH SCHEDULES. A/P SCHEDULES WILL CONTINUE TO SLIP UNTIL FULL COMPLEMENT IS AVAILABLE.

~~TOP SECRET~~

ITEM

DATE REQUIRED

EST. DELIVERY

PMU

- PRESSURE VESSEL
- REGULATOR
- POTENTIOMETER
- CONNECTORS

NOVEMBER 1966
 NOVEMBER 1966
 NOVEMBER 1966
 NOVEMBER 1966

FEBRUARY 1967
 JANUARY 1967
 JANUARY 1967
 FEBRUARY 1967

EXPOSURE CONTROL

- SWITCHES
- STEPPER MOTOR
- TIMER

NOVEMBER 1966
 NOVEMBER 1966
 NOVEMBER 1966

JANUARY 1966
 JANUARY 1967
 JANUARY 1967

SLOPE PROGRAMMER (V/H) BOX

- SWITCHES
- POWER SUPPLY, TRANSFORMER
- SERVO MOTOR
- TIMER & POTENTIOMETERS

OCTOBER 1966
 OCTOBER 1966
 OCTOBER 1966
 NOVEMBER 1966

JANUARY 1967
 JANUARY 1967
 JANUARY 1967
 JANUARY 1967

QUALIFICATION TEST PANELS, CONSOLES

- PROGRESSIVE GROUNDING UNIT

SEPTEMBER 1966

JANUARY 1967

TUNA

- MACHINED PARTS (FROM VENDOR)

NOVEMBER 1966

JANUARY 1967

DISIC W/S

- MACHINED PARTS (FROM VENDOR)

NOVEMBER 1966

JANUARY 1967

~~TOP SECRET~~

A/P DESIGN REVIEW SCHEDULE FOR J-3 SYSTEM

SYSTEM AND SUBSYSTEM
FINAL DESIGN REVIEW

TITLE

J-3 SYSTEM 4-18-67

PAYLOAD VEHICLE SYSTEM: 3-16-67

AIRFRAME SUBSYSTEM AND SYSTEM THERMAL CONTROL 2-16-67

ELECTRICAL SUBSYSTEMS: 1-10-67

- PYRO
 - COMMAND
 - TELEMETRY
 - POWER
 - SLOPE PROGRAMMER
 - SLP CONDITIONER
- } INCLUDED IN ABOVE

GHE SYSTEMS 2-7-67

GSE S/S ELECTRICAL 2-7-67

SYSTEMS CONSOLES 2-7-67

CR INSTRUMENT SUBSYSTEMS 4-18-67

DISIC SUBSYSTEMS 4-18-67

SRV SUBSYSTEMS 4-18-67

~~TOP SECRET~~



SYSTEM SPECIFICATIONS

<u>TITLE</u>	<u>NUMBER</u>	<u>ECD</u>	<u>REMARKS</u>
SYSTEM ATS AND QTS	T3-6-063	JANUARY 1967	RELEASED
SYSTEM THERMAL SPEC	--	JANUARY 1967	SV TO PROVIDE
VAFB LAUNCH SPEC	--	MARCH 1967	
MATING REQUIREMENTS SPEC	--	JANUARY 1967	

ALL ELSE RELEASED

AGE SPECIFICATIONS

o ALL RELEASED



~~TOP SECRET~~

STATUS OF INTERFACE DRAWINGS

- o CORRECTION TO LAST MONTH'S MEETING NOTE:
 - o T33-112 INTERFACE (EXIT, T/U AND I.R. ROLLERS (MAIN) - NOT SIGNED OFF. A/P IS INCORPORATING BOSTON COMMENTS ON CHECK PRINTS, TO BE READY FOR SIGN OFF 20 JAN. 1967.
 - o T33-100 INTERFACE (PAYLOAD COMPLETE) WILL BE READY FOR SIGN OFF JULY 1967.
 - o T33-104 BEING REVISED FOR ALUMINUM CAPSULE COVER PER MARKED G.E. PRINTS

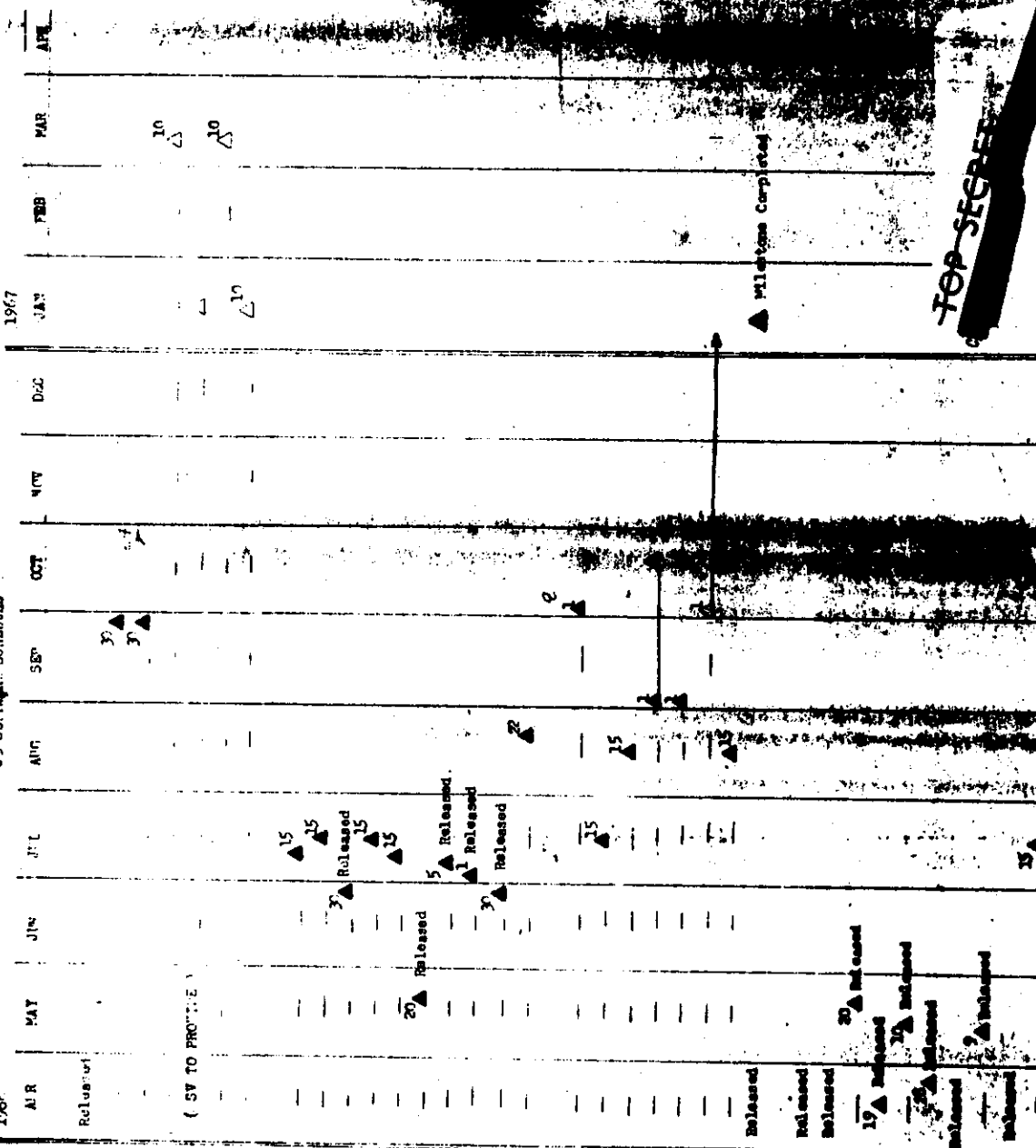
~~TOP SECRET~~

OPERATIONS AND ANALYSIS

- o HEADQUARTERS PROGRAMMING SUPPORT INCLUDED:
- o CACTUS CONVERSION TO IBM 360/65 90% COMPLETE WITH DAILY REPORTS CHECKED OUT AND MISSION SUMMARY CHECK OUT TO BE COMPLETED.
- o CALICO CONVERSION TO IBM 360/65 95% COMPLETE WITH ALL PROGRAMS CHECKED OUT. PROGRAM EFFICIENCY IMPROVEMENTS AND DOCUMENTATION TO BE COMPLETED.
- o AREA & PRIORITY ACCOUNTING COMPUTER SOFTWARE CHECKED OUT ON IBM 360/65 USING SAMPLE DATA. DOCUMENTATION TO BE COMPLETED. FIRST IMPLEMENTATION TO BE IN PARALLEL WITH NORMAL FEBRUARY MISSION PREPARATIONS.

J3 SOFTWARE SCHEDULE

1967



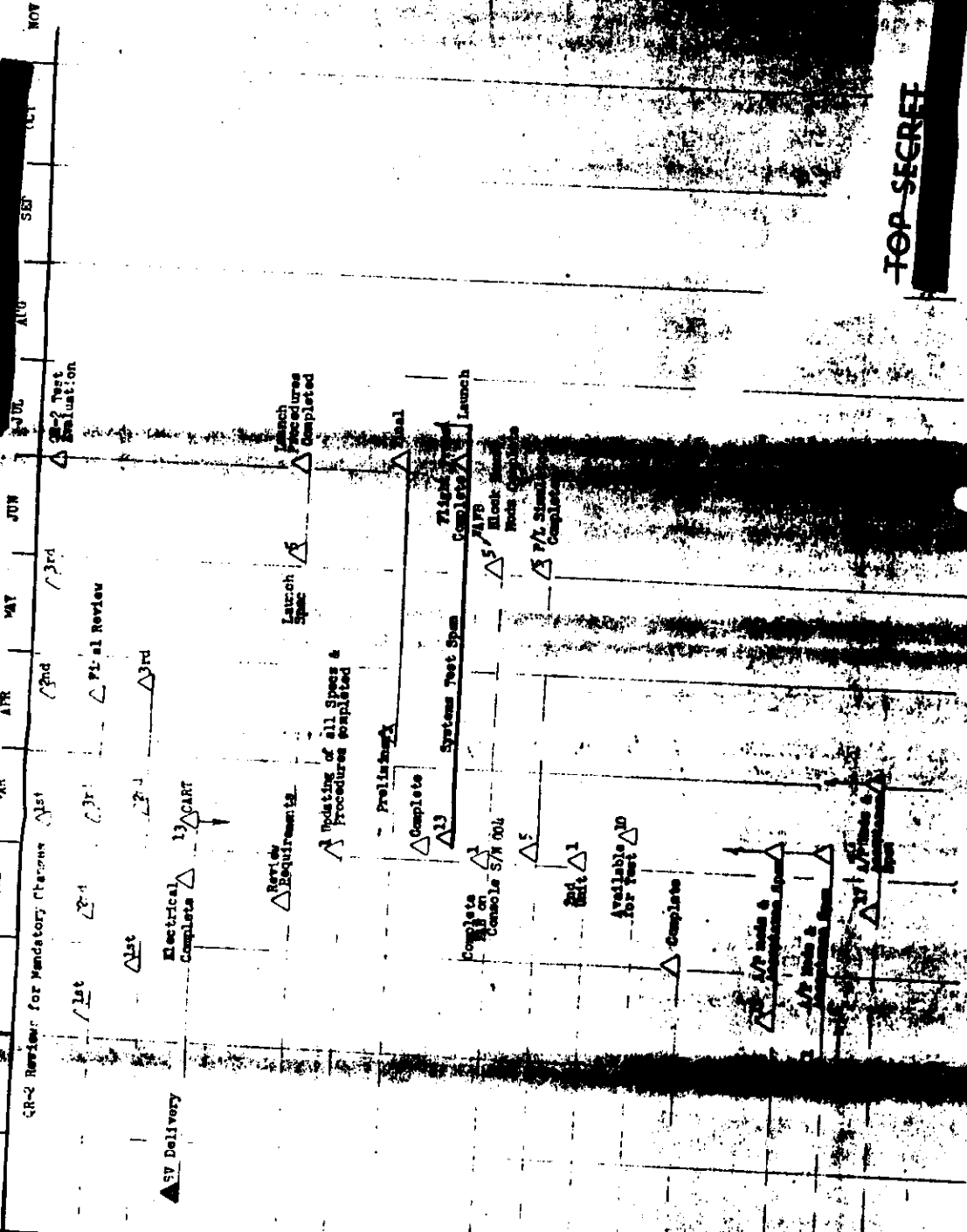
TOP SECRET

NOTE: SE OPERATIONS

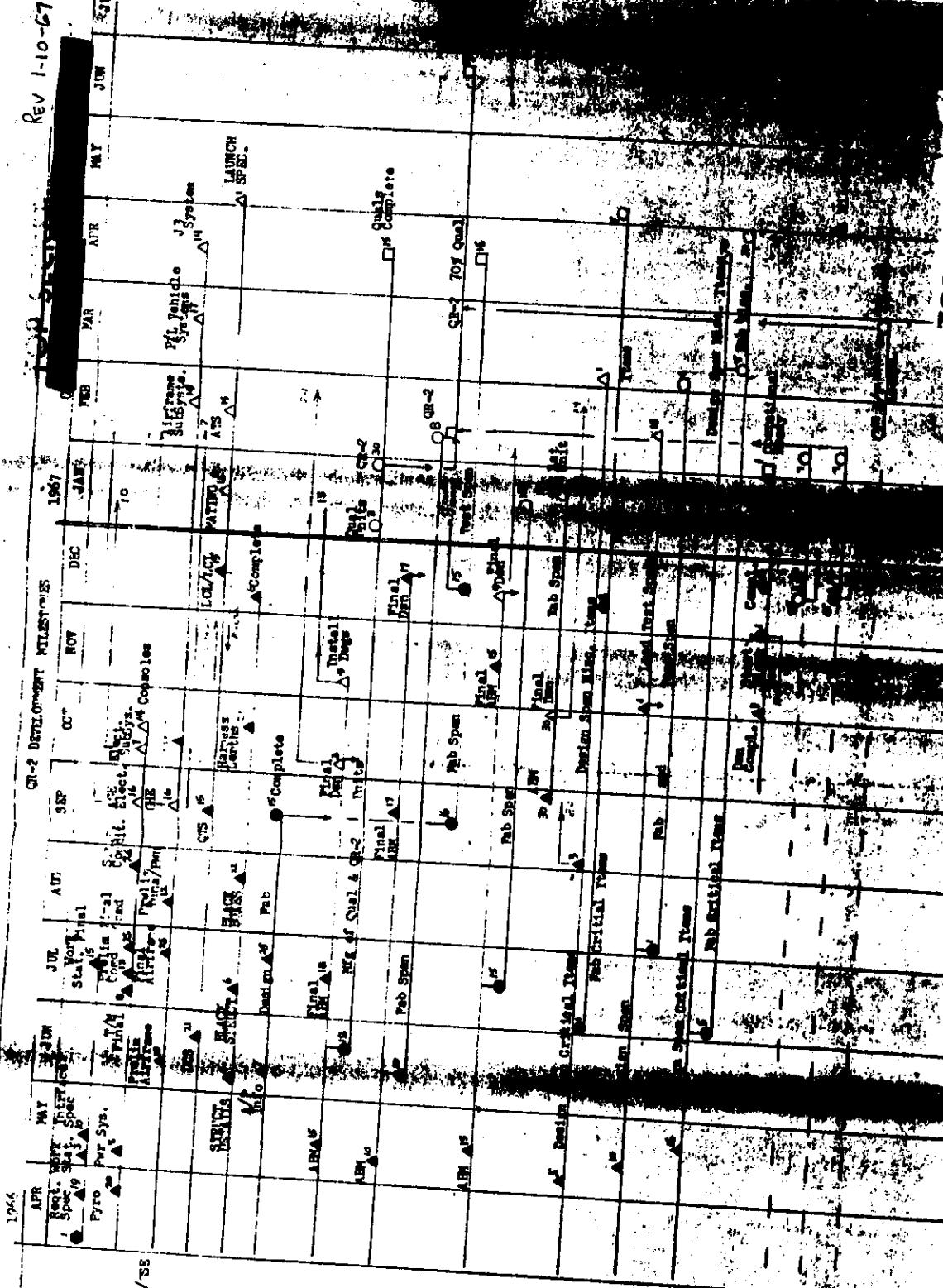
- Dusim Conting
 - Acceptance Test
 - Qualification Test
 - Asena Compatibility
 - System Thermal
 - VAFB Launch
 - Mating Requirement
- SUBSYSTEM SPECIFICATIONS
- Power
 - Telemetry
 - Pyro
 - Command
 - Exposure Control
 - Forward Motion Compensation
 - Digital T/R Subsystem
 - Digital T/R Multiplexer
 - Silicon Light Pulsar
 - Pressure Makeup System

AOE SPECIFICATIONS

- Payload Simulator (SV to provide)
 - System Console
 - System Thermal Altitude Console
 - Pyro Load Test Console
 - Pyro Initiator & Continuity Console
 - Electronics Console
 - Digital T/R Data Processor
 - Fragible Sheath
- ASSOCIATE INTERFACES
- Next Statement A/P J3
 - Next Statement - Ops & Analysis & P/L Inter-
 - System Performance/Design Requirements
 - J3 Configuration Requirement Spec
 - Electrical Interface Spec - CR
 - Electrical Interface Spec - GWT
 - Electrical Interface Spec - HDSIC
 - Timing, T/R, Command, Power & Pyro Interf.
 - HDSIC Subsystem - HDS
 - System Environmental Spec



- TEST PROGRAMS AND REVIEWS
- STRUCTURAL TEST VEHICLE
- BLACK BOXES
- FLIGHT STRIPS/TIPS
- SOFTWARE
- INSTRUMENTATION
- ASSOCIATE SPECS & PROCEDURES
- VEHICLE STATEMENT
- SYSTEM SPECIFICATION
- AOE
- BLACK-OUT BOXES & TEST AIDS
- M/S DOLLY & CRADLE HOUS
- SPECIAL TEST CABLES
- "P" BLACK HOUS
- ASSOCIATE HARDWARE
- INSTRUMENTS (600-001)
- INSTRUMENTS (97)
- INSTRUMENTS (600-002)



TOP SECRET

TOP SECRET

J3 WILSONS

AS OF

REV 1-10-67

1966
 M A M J J A S O N D 1967
 J F M A M J J A S O N D 1968

1968

1967

1966

1965

1964

1963

1962

1961

1960

1959

1958

1957

1956

1955

1954

1953

1952

1951

1950

1949

1948

1947

1946

1945

1944

1943

1942

1941

1940

1968

1967

1966

1965

1964

1963

1962

1961

1960

1959

1958

1957

1956

1955

1954

1953

1952

1951

1950

1949

1948

1947

1946

1945

1944

1943

1942

1941

1940

CO-AHEAD

REQUIREMENT SPEC

WORK STATEMENT

DESIGN REVIEWS

SOFTWARE

SYSTEMS SPEC

SUB-SYSTEM SPEC

AOE SPEC

NON-ELEMENT SPEC

MOOR

STUD. TEST PROCED

Q-C PERFORMS SUMMARY

MANUALS

...

...

...

...

...

...

...

...

...

...

...

...

22

19 Complete

12 Submit for Signature

Electr. Subsystem

AOE Final

13-9008

15

15

15

15

15

15

15

15

15

15

15

15

15

15

15

15

15

15

15

12

Airframe Subsystem

P/L Veh. System

AOE System

AOE System

AOE System

AOE System

AOE System

AOE System

AOE System

AOE System

AOE System

AOE System

AOE System

AOE System

AOE System

AOE System

AOE System

AOE System

AOE System

AOE System

AOE System

AOE System

12

12

12

12

12

12

12

12

12

12

12

12

12

12

12

12

12

12

12

12

12

12

12

12

12

12

12

12

12

12

12

12

12

12

12

12

12

12

12

12

12

12

12

12

12

12

12

12

12

12

12

12

12

12

12

12

12

12

12

12

12

12

12

12

12

12

12

12

12

12

12

12

12

12

12

12

12

12

12

12

12

12

12

12

12

12

12

12

12

12

12

12

12

12

12

12

12

12

12

12

12

12

12

12

12

12

12

12

12

12

12

12

12

12

12

12

12

12

12

12

12

12

12

12

12

12

12

12

12

12

12

12

12

12

12

12

12

12

12

12

12

12

12

12

12

12

12

12

12

12

12

12

12

12

12

12

12

12

12

12

12

TOP SECRET

18

TOP SECRET

Revised 1-1-67
1-20-67

		1967										1968						
		7	8	9	10	11	12	1	2	3	4	5	6	7	8	9	10	
		J-34	J-35	J-36	J-37	J-38	J-39	J-40	J-41	J-42	J-43	J-44	J-45	J-46	J-47	J-48	J-49	
Forebody Expiration Date Ser. No. Expiration Date Ser. No. Expiration Date Strip Resters Ser. No. Expiration Date Ser. No. Expiration Date	255	256	269	277	264	288	276	292	290	292	292	292	292	292	292	292	292	
	1-4-67	1-3-67	5-19-67	7-3-67	3-21-67	9-3-67	1-19-67	1-19-67	1-19-67	1-19-67	1-19-67	1-19-67	1-19-67	1-19-67	1-19-67	1-19-67	1-19-67	
	258	260	270	275	287	288	279	293	290	292	292	292	292	292	292	292	292	
	1-31-67	2-17-67	5-19-67	6-19-67	4-5-67	8-11-67	2-3-67	10-3-67	10-3-67	10-3-67	10-3-67	10-3-67	10-3-67	10-3-67	10-3-67	10-3-67	10-3-67	
	257	261	271	276	289	290	280	294	291	293	293	293	293	293	293	293	293	
	1-30-66	1-30-67	2-20-67	1-30-67	1-30-67	1-30-67	1-30-67	1-30-67	1-30-67	1-30-67	1-30-67	1-30-67	1-30-67	1-30-67	1-30-67	1-30-67	1-30-67	1-30-67
	259	262	272	277	288	290	281	295	292	294	294	294	294	294	294	294	294	
	1-4-67	5-19-67	3-27-67	7-3-67	11-21-67	9-17-67	2-13-68	10-3-67	10-3-67	10-3-67	10-3-67	10-3-67	10-3-67	10-3-67	10-3-67	10-3-67	10-3-67	
	258	270	287	275	296	295	285	301	293	293	293	293	293	293	293	293	293	
	1-31-67	5-19-67	4-5-67	6-18-67	11-2-67	8-11-67	1-12-68	10-3-67	10-3-67	10-3-67	10-3-67	10-3-67	10-3-67	10-3-67	10-3-67	10-3-67	10-3-67	
Forebody Expiration Date Ser. No. Expiration Date Ser. No. Expiration Date Strip Resters Ser. No. Expiration Date Ser. No. Expiration Date	255	256	269	277	264	288	276	292	290	292	292	292	292	292	292	292	292	
	1-4-67	1-3-67	5-19-67	7-3-67	3-21-67	9-3-67	1-19-67	1-19-67	1-19-67	1-19-67	1-19-67	1-19-67	1-19-67	1-19-67	1-19-67	1-19-67	1-19-67	
	258	260	270	275	287	288	279	293	290	292	292	292	292	292	292	292	292	
	1-31-67	2-17-67	5-19-67	6-19-67	4-5-67	8-11-67	2-3-67	10-3-67	10-3-67	10-3-67	10-3-67	10-3-67	10-3-67	10-3-67	10-3-67	10-3-67	10-3-67	
	257	261	271	276	289	290	280	294	291	293	293	293	293	293	293	293	293	
	1-30-66	1-30-67	2-20-67	1-30-67	1-30-67	1-30-67	1-30-67	1-30-67	1-30-67	1-30-67	1-30-67	1-30-67	1-30-67	1-30-67	1-30-67	1-30-67	1-30-67	
	259	262	272	277	288	290	281	295	292	294	294	294	294	294	294	294	294	
	1-4-67	5-19-67	3-27-67	7-3-67	11-21-67	9-17-67	2-13-68	10-3-67	10-3-67	10-3-67	10-3-67	10-3-67	10-3-67	10-3-67	10-3-67	10-3-67	10-3-67	
	258	270	287	275	296	295	285	301	293	293	293	293	293	293	293	293	293	
	1-31-67	5-19-67	4-5-67	6-18-67	11-2-67	8-11-67	1-12-68	10-3-67	10-3-67	10-3-67	10-3-67	10-3-67	10-3-67	10-3-67	10-3-67	10-3-67	10-3-67	

TOP SECRET

REPAIRS

1. Requires that the Calenda life be extended on the forehead for the following systems:
 J-3, J-35, J-37, J-43, and J-44.

2. Requires that a visual inspection and a Special Test be entered the Calenda: life for the Strip Resters on J-39, J-40, J-37, J-43, and J-44.

3. The Calenda: life for the Res. Diode Modules were extended by [redacted] Dated 2 Dec. 1967.

4. Cost to System Test for [redacted] unknown at this time.

1. Requires that the Calenda: life be extended on the forehead for the following systems:
 J-3, J-35, J-37, J-43, and J-44.

2. Requires that a visual inspection and a Special Test be entered the Calenda: life for the Strip Resters on J-39, J-40, J-37, J-43, and J-44.

3. Requires that a visual inspection and a Special Test be entered the Calenda: life for the Res. Diode Modules on the following systems:
 J-3, J-35, J-37, J-43, and J-44.

4. Requires that a visual inspection and a Special Test be entered the Calenda: life for the Strip Resters on J-39, J-40, J-37, J-43, and J-44.

5. Requires that a visual inspection and a Special Test be entered the Calenda: life for the Res. Diode Modules on the following systems:
 J-3, J-35, J-37, J-43, and J-44.

6. Requires that a visual inspection and a Special Test be entered the Calenda: life for the Strip Resters on J-39, J-40, J-37, J-43, and J-44.

7. Requires that a visual inspection and a Special Test be entered the Calenda: life for the Res. Diode Modules on the following systems:
 J-3, J-35, J-37, J-43, and J-44.

J1 AND J3 FLIGHT SCHEDULE

P/L	FY 67												FY 68												FY 69											
	J	A	S	O	N	D	J	F	M	A	M	J	J	A	S	O	N	D	J	F	M	A	M	J	J	A	S	O								
	J-38						J-	J-	J-	J-	J-	J-	J-	J-	J-	J-	J-	J-	J-	J-	J-	J-	J-	J-	J-	J-	J-	J-								
	PG2						34	35	40	37	PG3	I	41	43	-2	PG7			3	44	4	PG8	5													
							J-35	J-37	J-37	J-41	J-41	J-43	J-44	J-44	J-44	J-44	J-44	J-44	J-44	J-47	J-47	J-47	J-47	J-47	J-47	J-47	J-47	J-47								
							J-37	J-35	J-40	J-41	J-42	J-43	J-44	J-45	J-45	J-45	J-45	J-45	J-45	J-48	J-48	J-48	J-48	J-48	J-48	J-48	J-48	J-48								
							J-40	J-41	J-42	J-43	J-44	J-45	J-45	J-45	J-45	J-45	J-45	J-45	J-48	J-48	J-48	J-48	J-48	J-48	J-48	J-48	J-48									
							J-41	J-42	J-43	J-44	J-45	J-45	J-45	J-45	J-45	J-45	J-45	J-48	J-48	J-48	J-48	J-48	J-48	J-48	J-48	J-48	J-48									
							J-42	J-43	J-44	J-45	J-46	J-47	CR2																							
							J-43	J-44	J-45																											
							J-44	J-45																												
Vehicle							1632	1639	1635	1634	1636	1633	1637	1641	1638	1639	1642	1640	1643	1644	1645	1646	1647	1648	1649	1650	1651									

P/L	FY 69												FY 70													
	N	D	J	F	M	A	M	J	J	A	S	O	N	D	J	F	M	A	M	J	J	A	S	O	N	D
	J	J	CR	CR	CR	CR	CR	CR	CR	CR	CR	CR	CR	CR	CR	CR	CR	CR	CR	CR	CR	CR	CR	CR	CR	CR
	49	50	8	9	10																					
	J-50	CR8	CR9	CR10	CR11	CR12	CR12	CR12	CR12	CR12	CR12	CR12	CR12	CR12	CR12	CR12	CR12	CR12	CR12	CR12	CR12	CR12	CR12	CR12	CR12	CR12
	CR6	CR6	CR6	CR6	CR6	CR6	CR6	CR6	CR6	CR6	CR6	CR6	CR6	CR6	CR6	CR6	CR6	CR6	CR6	CR6	CR6	CR6	CR6	CR6	CR6	CR6
	CR10	CR10	CR10	CR10	CR10	CR10	CR10	CR10	CR10	CR10	CR10	CR10	CR10	CR10	CR10	CR10	CR10	CR10	CR10	CR10	CR10	CR10	CR10	CR10	CR10	CR10
	CR11	CR11	CR11	CR11	CR11	CR11	CR11	CR11	CR11	CR11	CR11	CR11	CR11	CR11	CR11	CR11	CR11	CR11	CR11	CR11	CR11	CR11	CR11	CR11	CR11	CR11
	CR12	CR12	CR12	CR12	CR12	CR12	CR12	CR12	CR12	CR12	CR12	CR12	CR12	CR12	CR12	CR12	CR12	CR12	CR12	CR12	CR12	CR12	CR12	CR12	CR12	CR12
Vehicle							1652	1653	1654	1654	1654	1654	1654	1654	1654	1654	1654	1654	1654	1654	1654	1654	1654	1654	1654	1654

1. CR12: 1654 thru 1654
 2. Vehicle 1654 thru 1654
 3. 1654, 1654, 1654 and 1654
 4. 1654 thru 1654 in 4 blocks

SECRET

Master Schedule

A/P MANUFACTURING AND SYSTEM TEST SCHEDULE

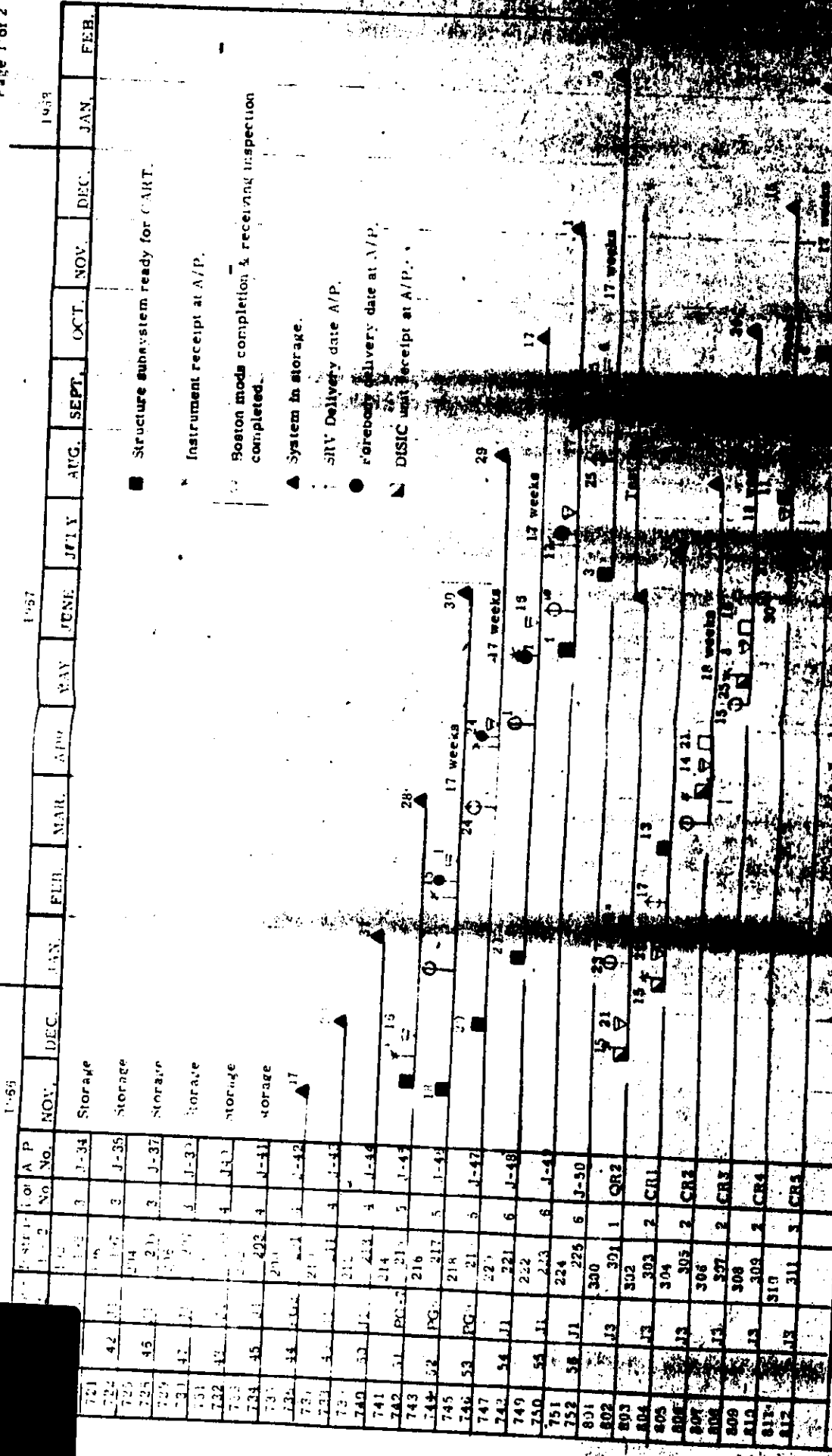
Revised: 11-16-67
Page 2 of 2

		1967											1968				
		OCT.	NOV.	DEC.	JAN.	FEB.	MAR.	APR.	MAY	JUNE	JULY	AUG.	SEPT.	OCT.	NOV.	DEC.	JAN.
J3	312	3	3	3	3	3	3	3	3	3	3	3	3	3	3	3	3
J3	314	3	3	3	3	3	3	3	3	3	3	3	3	3	3	3	3
J3	315	3	3	3	3	3	3	3	3	3	3	3	3	3	3	3	3
J3	317	3	3	3	3	3	3	3	3	3	3	3	3	3	3	3	3
J3	318	3	3	3	3	3	3	3	3	3	3	3	3	3	3	3	3
J3	319	3	3	3	3	3	3	3	3	3	3	3	3	3	3	3	3
J3	320	3	3	3	3	3	3	3	3	3	3	3	3	3	3	3	3
J3	321	3	3	3	3	3	3	3	3	3	3	3	3	3	3	3	3
J3	322	3	3	3	3	3	3	3	3	3	3	3	3	3	3	3	3
J3	323	3	3	3	3	3	3	3	3	3	3	3	3	3	3	3	3
J3	324	3	3	3	3	3	3	3	3	3	3	3	3	3	3	3	3
J3	325	3	3	3	3	3	3	3	3	3	3	3	3	3	3	3	3
J3	326	3	3	3	3	3	3	3	3	3	3	3	3	3	3	3	3
J3	327	3	3	3	3	3	3	3	3	3	3	3	3	3	3	3	3
J3	328	3	3	3	3	3	3	3	3	3	3	3	3	3	3	3	3
J3	329	3	3	3	3	3	3	3	3	3	3	3	3	3	3	3	3
J3	330	3	3	3	3	3	3	3	3	3	3	3	3	3	3	3	3
J3	331	3	3	3	3	3	3	3	3	3	3	3	3	3	3	3	3
J3	332	3	3	3	3	3	3	3	3	3	3	3	3	3	3	3	3



Schedule

J1 13



17