

[REDACTED]

~~TOP SECRET~~

[REDACTED]

Copy No. 46 Pages
(Including Cover Sheet)



CORONA "J" FLIGHT DATA BOOK

SYSTEM NO. J-04

VEHICLE NO. 1614

MISSION NO. 1019

CAMERA NOS. 118+119

Prepared by:

Checked by:

Approved by:

Approved by:

[REDACTED]

Manager

Declassified and Released by the N R O

In Accordance with E. O. 12958

on NOV 26 1997

LOGGED [REDACTED]

7 MAY 1965

~~TOP SECRET~~

Copy No.

SYSTEM NO. J-04
VEHICLE NO. 1614
MISSION NO. 1019
CAMERA NOS. 118+119

~~TOP SECRET~~ Page 2 of 46

TABLE OF CONTENTS

	Page No.
Vehicle Layout	<u>3</u>
General Flight Data	<u>4</u>
Lens Settings and Film Types	<u>5</u>
V/H Ramp Configuration and Constants	<u>6</u>
Cycle Period Data	<u>7</u>
Lens Data Summary Master Camera	<u>8</u>
Lens Data Summary Master Camera Horizon Optics	<u>9</u>
Lens Data Summary Slave Camera	<u>10</u>
Lens Data Summary Slave Camera Horizon Optics	<u>11</u>
Definition of Panoramic Camera Format Calibrations	<u>12</u>
Panoramic Camera Format Calibration Dimensions	<u>13</u>
Panoramic Camera Format Layout	<u>14</u>
Lens Data Summary Stellar Index "A"	<u>15</u>
Lens Data Summary Stellar Index "B"	<u>16</u>
Preliminary Clock Correlation	<u> </u>
Horizon Lens Settings	<u>17</u>
Performance Estimate	<u> </u>

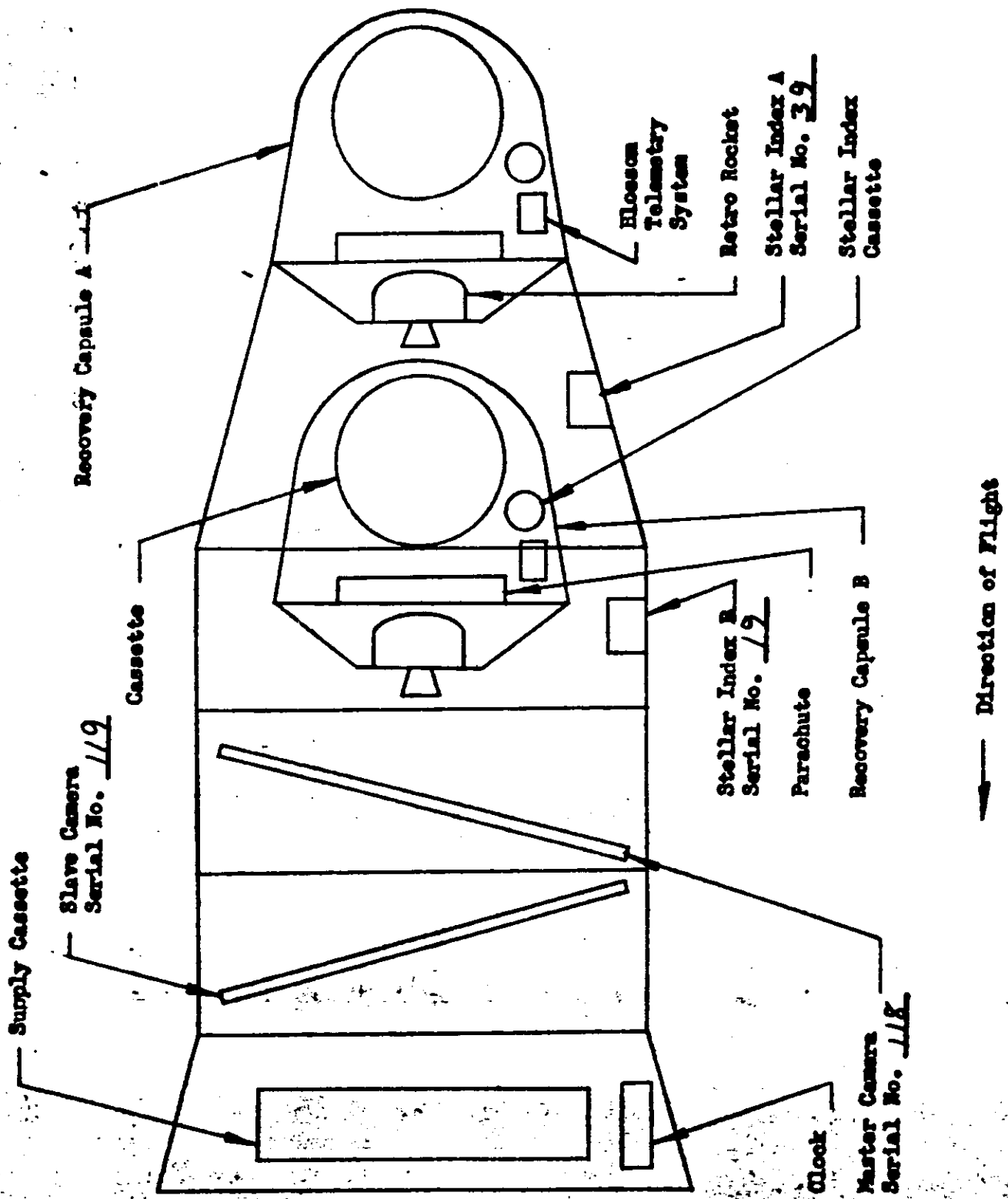


COPY NO. _____



SYSTEM NO. J-04
VEHICLE NO. 1614
MISSION NO. 1019
CAMERA NOS. 11R+119

VEHICLE LAYOUT:



TOP SECRET

SYSTEM NO. J-04
VEHICLE NO. 1614
MISSION NO. 1019
CAMERA NOS. 118 & 119

Page 4 of 46

GENERAL FLIGHT DATA:

Master Camera Serial No. 118

Slave Camera Serial No. 119

Stellar Index "A" Serial No. D39/39/35

Stellar Index "B" Serial No. D19/18/19

Launch Date 4/29/65

Reactivation Date N/A

Reactivation Orbit No. N/A

Orbital Parameters: (Rev. 41)

Period 91.069 Min.

Eccentricity 0.02211

Perigee 99.772 NM

Perigee Latitude 37.00 Deg. N

Apogee 259.83 NM

Inclination Angle 85.03 Deg. N

Recovery Orbit No. 80

Recovery Date 5/4/65

REMARKS:

COPY NO.

TOP SECRET

SYSTEM NO. J-04
VEHICLE NO. 1614
MISSION NO. 1019
CAMERA NOS. 118 & 119

LENS SETTINGS AND FILM TYPES:

Panoramic Camera Settings:

	Camera No. <u>118</u>	Camera No. <u>119</u>
Panoramic Optics Slit Width	<u>0.250</u> in.	<u>0.175</u> in.
Panoramic Optics Filter Type	<u>WRATTEN 25</u>	<u>WRATTEN 21</u>
Horison Optics Exp. Time	<u>1/100</u> sec.	<u>1/100</u> sec.
Horison Optics Aperture	<u>F6.8 SUPPLY</u> <u>F8.0 TAKE-UP</u>	<u>F8.0 SUPPLY</u> <u>F6.8 TAKE-UP</u>
Horison Optics Filter Type	<u>WRATTEN 25</u>	<u>WRATTEN 25</u>

Stellar Index Camera Settings:

	Stellar Index A		Stellar Index B	
	Stellar	Index	Stellar	Index
Exposure Time	<u>2.0</u>	<u>1/500</u>	<u>2.0</u>	<u>1/500</u>
Aperture Setting	<u>F6.8</u>	<u>F4.5</u>	<u>F6.8</u>	<u>F4.5</u>
Filter Type	<u>NONE</u>	<u>WRATTEN 21</u>	<u>NONE</u>	<u>WRATTEN 21</u>
Ratio: One Stellar Index Frame Per	<u>7</u>		Master Camera Frames.	

Film:

Panoramic Cameras:

	Camera No. <u>118</u>	Camera No. <u>119</u>
Type	<u>7J-40</u>	<u>7J-40</u>
Length	<u>16000</u> ft.	<u>16000</u> ft.
Splices	<u>4</u>	<u>5</u>
Exul. Date	<u>81-6-1-5</u>	<u>81-6-1-5</u>

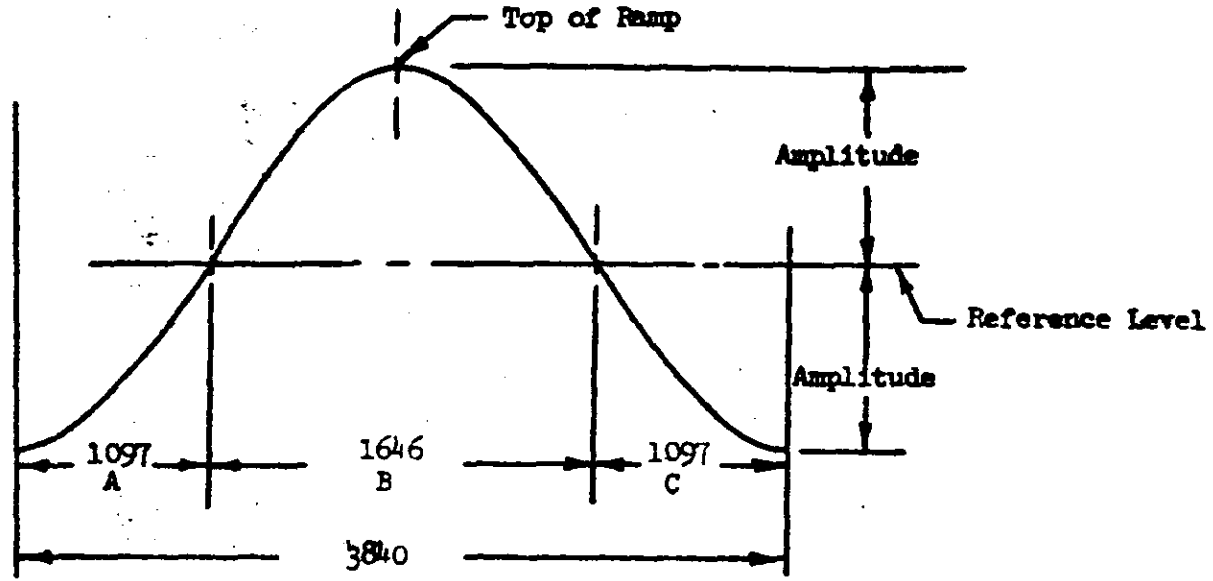
Stellar Index Cameras:

	Stellar Index A		Stellar Index B	
	Stellar	Index	Stellar	Index
Type	<u>3J-34</u>	<u>7J-33</u>	<u>3J-34</u>	<u>7J-33</u>
Exul. Date	<u>54-2-9-4</u>	<u>37-1-12-4</u>	<u>54-2-9-4</u>	<u>37-1-12-4</u>

VEHICLE NO. 1614
 MISSION NO. 1019
 CAMERA NOS. 118 + 119

~~TOP SECRET~~

V/H RAMP CONFIGURATION AND CONSTANTS:



Cycle Rate Computation:

- A. 0 to 1097 Sec Up Ramp: $CPS = R+A \sin (1.5 X -1.5707963)$
- B. 1097 to 2743 Sec Up Ramp: $CPS = R+A \sin (2 X -2.0943951) \leq .4625$
- C. 2743 to 3840 Sec Up Ramp: $CPS = R+A \sin (1.5 X -0.7853982)$

FMC Rate Computation:

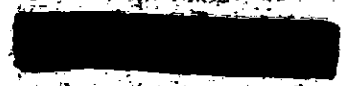
FMC Rate (In/Sec) = $2 \pi \left(\frac{0.3223}{CP} \right) = 2.02507 \times CPS$
 FMC Rate (Radians/Sec) = $2 \pi \left(\frac{0.3224}{24 CP} \right) = 0.84378 \times CPS$

Scan Velocity Computation:

Scan Velocity (In/Sec) = $\frac{48 \pi}{CF} = 150.796 \times CPS$
 Scan Velocity (Radians/Sec) = $\frac{48 \pi}{24 CP} = 6.28319 \times CPS$

Exposure Time (Milliseconds) = $1000 \left(\frac{CP \times SLIT}{48 \pi} \right) = 6.63146 \left(\frac{SLIT}{CPS} \right)$

WHERE: $X = \frac{\text{Time Up Ramp (Seconds)}}{1047.6942}$ $R = \frac{1}{2} (CPS_{top} + CPS_{bottom})$
 $A = \frac{1}{2} (CPS_{top} - CPS_{bottom})$ $CP = \text{Camera Cycle Period in Sec/Cycle}$
 CPS = Camera Cycle Rate in Cycles/Sec
 SLIT = Slit Width in Inches



~~TOP SECRET~~

SYSTEM NO. J-04
 VEHICLE NO. 1674
 MISSION NO. 1019
 CAMERA NOS. 118 + 119

~~TOP SECRET~~

CYCLE PERIOD DATA:

PRE-FLIGHT CYCLE PERIODS:

V/H Ramp Level	V/H Ramp Amplitude	Cycle Period Seconds		Time Up Ramp Sec
		Master	Slave	
8	3	4.873	4.879	256
8	3	2.238	2.230	1815
8	3	4.780	4.792	313
8	3	2.223	2.215	1960
8	3	2.222	2.214	1930
8	3	4.550	4.560	428
8	3	2.229	2.221	2006
8	3	4.445	4.451	481
8	3	2.231	2.224	2025

IN-FLIGHT CYCLE PERIODS

V/H Ramp Level	V/H Ramp Amplitude	Cycle Period Seconds		Orbit No.	Time Up Ramp Sec
		Master	Slave		
8	3	4.750	4.830	8	256
8	3	2.224	2.272	16	1815
8	3	4.710	4.760	24	313
8	3	2.215	2.251	31	1960
8	3	2.237	2.278	47	1930
8	3	4.495	4.573	56	428
8	3	2.230	2.260	63	2006
8	3	4.397	4.453	71	481
8	3	2.254	2.288	79	2025

~~TOP SECRET~~
~~TOP SECRET~~

SYSTEM NO. J-04
VEHICLE NO. 1612
MISSION NO. 1019
CAMERA NOS. 118 & 119

LENS DATA SUMMARY: Master Camera No. 118

Lens Serial No. 0602435

Slit Width 0.250 Inch

Filter Type WRATTEN 25

Equivalent Operational Focal Length 609.574 MM

Resolution:

Static:

	Lines/MM	Film Type	Target Contrast
Snatch Test	<u>265</u>	<u>50-132</u>	<u>HIGH</u>
Other	<u>149</u>	<u>50-132</u>	<u>LOW</u>

Dynamic:

Itak <u> </u>	<u>174</u>	<u>50-132</u>	<u>HIGH</u>
Itak Post Vibration	<u>126</u>	<u>50-132</u>	<u>LOW</u>
AP	<u>179</u>	<u>50-132</u>	<u>HIGH</u>
AP	<u>112</u>	<u>50-132</u>	<u>LOW</u>
Other	<u> </u>	<u> </u>	<u> </u>

Note: Itak Post Vibration Resolution of 174 lines/MM Reported In
Message No. dated 4/29/65

Distortion - Positive (Pincushion)

Angle Off Axis Deg.	3°	2°	1°	0°	359°	358°	357°		
Distortion Millimeters	<u>.005</u>	<u>.003</u>	<u>.002</u>	<u>.000</u>	<u>.002</u>	<u>.003</u>	<u>.006</u>		

SYSTEM NO. J-04
 VEHICLE NO. 1614
 MISSION NO. 1019
 CAMERA NOS. 118 & 119

LENS DATA SUMMARY: (Horizon Cameras for MASTER Camera No. 118)

	Take-Up	Supply
Lens Serial No.	<u>81203</u>	<u>812313</u>
Exposure Time	<u>1/100</u> Sec.	<u>1/100</u> Sec.
Filter Type	<u>WRATTEN 25</u>	<u>WRATTEN 25</u>
Aperture	<u>F8.0</u>	<u>F6.8</u>
Operational Focal Length	<u>54.92</u> MM	<u>54.579</u> MM
Radial Distortion:		
10° off Axis	<u>.009</u> MM	<u>-.014</u> MM
20° off Axis	<u>.007</u> MM	<u>.004</u> MM
Tangential Distortion (Maximum Vector)	<u>.008</u> MM	<u>.004</u> MM

Resolution:

Angle off Axis Deg.	0	5	10	15	20	25	27.5	0	5	10	15	20	25	27.5
Radial Resolution	164	145	144	126	103	105	82	162	194	153	119	109	132	109
Tangential Resolution	164	145	134	114	91	60	46	73	172	151	115	91	64	49

116 Lines/MM Avg. 121 Lines/MM Avg.

Notes:

- Distortion and resolution are read at equivalent operational focal length.
- Resolution in lines per mm on 80-132 film and HIGH contrast target.

TOP SECRET
~~**TOP SECRET**~~

COPY NO. [REDACTED]

SYSTEM NO. J-04
VEHICLE NO. 1614
MISSION NO. 1019
CAMERA NOS. 118 + 119

LENS DATA SUMMARY: Slave Camera No. 119

Lens Serial No. 0572435
Slit Width 0.175 Inch
Filter Type WRATTEN 21
Equivalent Operational Focal Length 609.117 MM
Resolution:

Static:

	<u>Lines/MM</u>	<u>Film Type</u>	<u>Target Contrast</u>
Bench Test	<u>258</u>	<u>S0-132</u>	<u>HIGH</u>
Other	<u>164</u>	<u>S0-132</u>	<u>LOW</u>

Dynamic:

Itek <u>[REDACTED]</u>	<u>172</u>	<u>S0-132</u>	<u>HIGH</u>
Itek Post Vibration	<u>119</u>	<u>S0-132</u>	<u>LOW</u>
AP	<u>186</u>	<u>S0-132</u>	<u>HIGH</u>
AP	<u>114</u>	<u>S0-132</u>	<u>LOW</u>
Other	<u> </u>	<u> </u>	<u> </u>

NOTE: Itek Post Vibration Resolution of 172 lines/MM Reported In

Message No. [REDACTED] dated 4/29/64

Distortion - Positive (Pincushion)

Angle Off Axis Deg.	3	2	1	0	359	358	357		
Distortion Millimeters	.009	.003	.001	.000	.000	.003	.005		

SYSTEM NO. J-04
 VEHICLE NO. 1614
 MISSION NO. 1019
 CAMERA NOS. 118 + 119

LENS DATA SUMMARY: (Horizon Cameras for SLAVE Camera No. 119)

	<u>Take-Up</u>	<u>Supply</u>
Lens Serial No.	<u>813514</u>	<u>813520</u>
Exposure Time	<u>1/100</u> Sec.	<u>1/100</u> Sec.
Filter Type	<u>WRITTEN 25</u>	<u>WRITTEN 25</u>
Aperture	<u>F6.8</u>	<u>F8.0</u>
Operational Focal Length	<u>54.94</u> MM	<u>54.70</u> MM
Radial Distortion:		
10° off Axis	<u>.001</u> MM	<u>.001</u> MM
20° off Axis	<u>.009</u> MM	<u>.005</u> MM
Tangential Distortion (Maximum Vector)	<u>.006</u> MM	<u>.008</u> MM

Resolution:

Angle off Axis Deg.	0	5	10	15	20	25	27.5
Radial Resolution	116	116	91	64	65	83	55
Tangential Resolution	116	115	89	68	61	53	41

Angle off Axis Deg.	0	5	10	15	20	25	27.5
Radial Resolution	116	97	91	67	69	79	58
Tangential Resolution	116	102	89	77	64	57	41

81 Lines/MM Avg.

80 Lines/MM Avg.

NOTE:

1. Distortion and resolution are read at equivalent operational focal length.
2. Resolution in lines per MM on SO-132 film and HIGH contrast target.

04
MISSION NO. 1014
MISSION NO. 1019
MEDIA NOS. 118 & 119

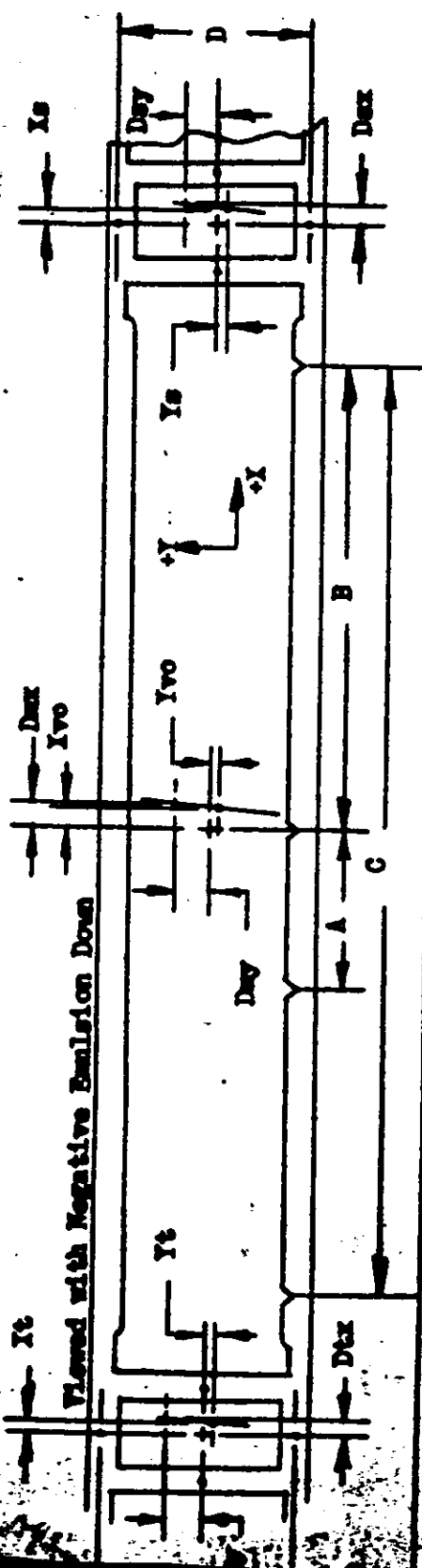
12 of 46

DEFINITION OF PANORAMIC CAMERA FORMAT CALIBRATIONS:

- 2.0 Measurements are made with respect to collimator targets fixed with respect to the mechanical interface between the total payload assembly and the orbital vehicle.
- 2.0 Two sets of three targets each, are aligned to be coplanar within $\pm 5^\circ$ of arc so positioned to form an angle of $\pm 15.00^\circ \pm 5^\circ$ to the mechanical interface for master camera calibrations and an angle of $\pm 15.00^\circ \pm 5^\circ$ to the mechanical interface for slave camera calibrations.
 - 2.1 One target, Target 1 of each set is imaged on the Terrain format.
 - 2.2 The second and third targets of each set are at angles of $75.00^\circ \pm 5^\circ$ from target one and are imaged on the horizon formats.
- 3.0 The indicated center of format for the panoramic cameras is given by the intersection of a line through the center of mass of the central shrinkage marker drawn normal to the edge of format containing the shrinkage marker and a line parallel to the same edge located at a position half-way between the format edges.
- 4.0 The indicated principal points of the horizon cameras are the points of intersection of lines joining opposite fiducials.
- 5.0 X_{vo} and Y_{vo} are the offsets of Target 1 from the indicated center of format of the panoramic cameras as defined in Paragraph 3.
- 6.0 X_s , Y_s and X_t , Y_t are the offsets of Targets 2 and 3 from the indicated principal points of the supply and take-up horizon cameras respectively.
- 7.0 The indicated flight direction is the direction of vehicle travel during orbit. The forward edge of format is the edge opposite the shrinkage markers for the master camera and is the edge containing the shrinkage markers for the slave camera.
- 8.0 Dimensions A, B and C are the spacings of the shrinkage markers and dimensions D and E are the spacings of the Y Axis fiducials. Techniques for exact measurement of these dimensions have not been developed. The figures quoted are measurements made on hand processed film without control of shrinkage.
- 9.0 The format dimensions are measured to the best estimate of format edge.
- 10.0 Measurement of the angle between the indicated axis of the panoramic cameras and the line of intersection of the plane defined in Paragraph 2 on the format is obtained from the offset dimensions D_{ax} and D_{ay} of Target 1 for each camera.
- 11.0 Measurement of the angle between the indicated axis of the horizon cameras and the line of intersection of the plane defined in Paragraph 2 on the format is made by measuring the scan direction offset of the targets defined in Paragraph 2.2 at a fixed distance from the target center in the Y direction. Dimensions D_{ix} , D_{iy} , D_{sx} and D_{sy} are the effects of these measurements.

TOP SECRET

FORMAT DIMENSIONS: (PANORAMIC CAMERAS)



Camera No.	Vehicle Motion	Scan Direction	Vehicle Motion	Scan Direction
A <u>76.1</u>	Xt <u>-0.299</u>	Dtx <u>-0.310</u>	Xt <u>-0.160</u>	Dtx <u>-0.162</u>
B <u>354.7</u>	Yt <u>-0.008</u>	Dty <u>+2.835</u>	Yt <u>-0.031</u>	Dty <u>+2.462</u>
C <u>709.2</u>	Zt <u>-0.024</u>	Dzt <u>-0.026</u>	Zt <u>-0.276</u>	Dzt <u>-0.263</u>
D <u>56.424</u>	Yv <u>-0.055</u>	Dyv <u>+2.637</u>	Yv <u>-0.037</u>	Dyv <u>+2.103</u>
E <u>56.422</u>	Xv <u>+1.339</u>	Dvx <u>+1.360</u>	Xv <u>-1.089</u>	Dvx <u>-1.072</u>
	Yv <u>+0.727</u>	Dvy <u>+3.727</u>	Yv <u>+0.730</u>	Dvy <u>+3.730</u>

A/P NO. [REDACTED] COPY NO. [REDACTED]

Format Dimensions:

Panoramic	Take-Up	Supply
Height <u>55.801</u>	<u>N/A</u>	<u>N/A</u>
Width <u>752.1</u>	<u>N/A</u>	<u>N/A</u>

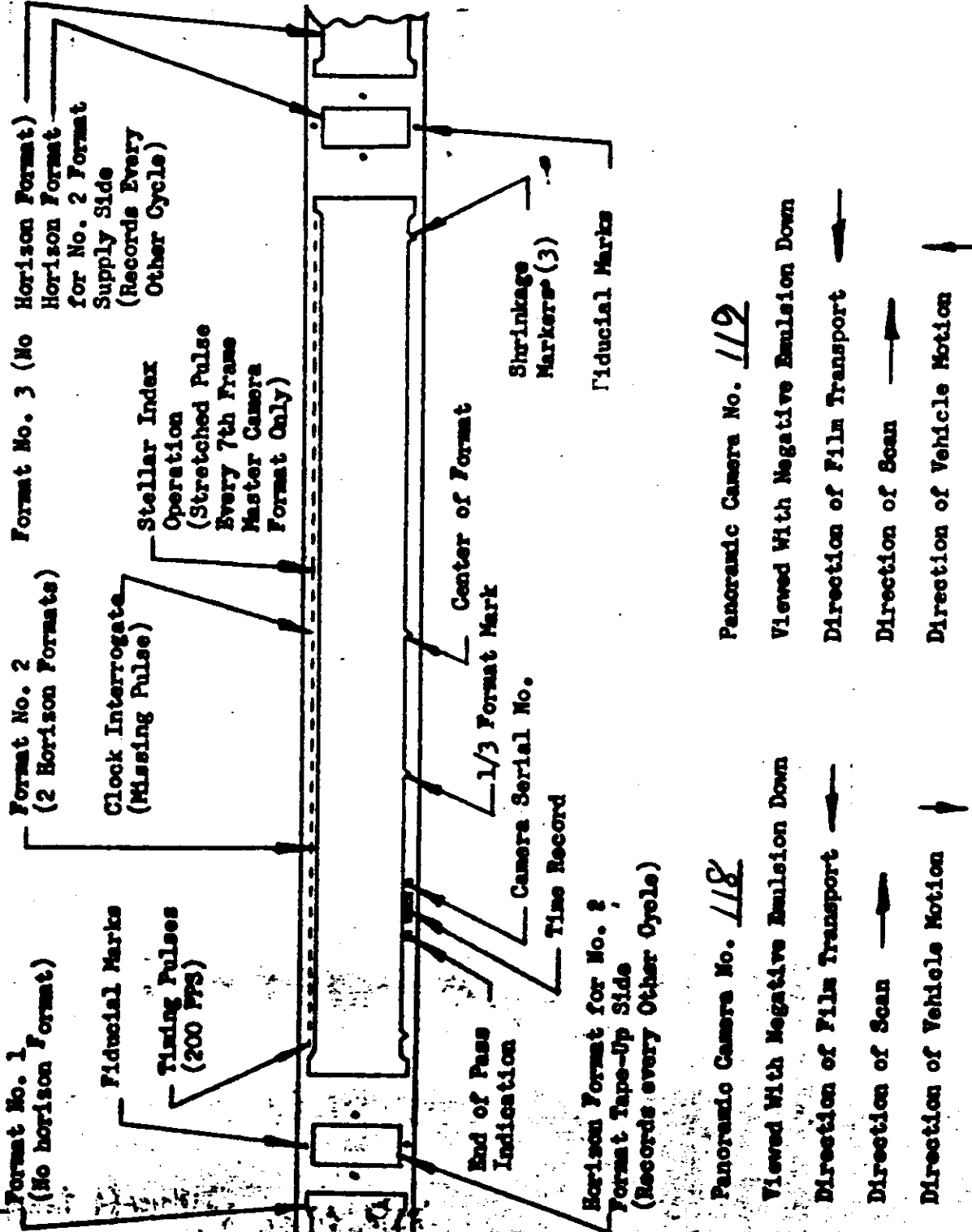
- Notes:
1. All dimensions are in millimeters and are average dimensions of three formats.
 2. Height of main format is taken at center of format.
 3. Dt, Dv, Dy, X and Y dimensions are taken 10MM above point defining target center.
 4. Format Sign Convention



SYSTEM NO. T-04
 VEHICLE NO. 1614
 MISSION NO. 1019
 CAMERA NOS. 118 & 119

~~TOP SECRET~~
~~TOP SECRET~~

FORMAT LAYOUT: (PANORAMIC CAMERAS)



SYSTEM NO. J-04
VEHICLE NO. 1614
MISSION NO. 1019
CAMERA NOS. 118 & 119

LENS DATA SUMMARY STELLAR INDEX D39/39/35: A MISSION

	<u>Stellar</u>	<u>Index</u>
Lens Serial No.	<u>10487</u>	<u>813051</u>
Reseau Serial No.	<u>35</u>	<u>39</u>
Filter Type	<u>NONE</u>	<u>WRITTEN 21</u>
Aperture	<u>F1.8</u>	<u>F4.5</u>
Exposure Time	<u>2.0</u> Sec.	<u>1/500</u> Sec.
Equivalent Focal Length	<u>N/A</u> MM	<u>N/A</u> MM

Resolution:

Angle Off Axis	0	10	20	30	35
Resolution L/MM High Contrast	<u>92/82</u>	<u>104/92</u>	<u>117/82</u>	<u>93/54</u>	<u>87/28</u>

NOTE: Index Resolution of 74 Lines/MM AWAR
Read From 4400 Film.

Distortion:

All distortions less than maximum allowable. Full Data to be reported as part of Photogrameter Data Reduction.

Alignment:

0.0006 "1.937 Inches 0.0008 "1/2.25 Inches

COPY NO.

~~TOP SECRET~~
~~TOP SECRET~~

SYSTEM NO. J-04
VEHICLE NO. 1614
MISSION NO. 1019
CAMERA NOS. 118 & 119

LENS DATA SUMMARY STELLAR INDEX D 19/18/19 : B MISSION

	<u>Stellar</u>	<u>Index</u>
Lens Serial No.	<u>10447</u>	<u>811905</u>
Reseau Serial No.	<u>19</u>	<u>18</u>
Filter Type	<u>NONE</u>	<u>WATTEN 21</u>
Aperture	<u>F 1.8</u>	<u>F 4.5</u>
Exposure Time	<u>2.0</u> Sec.	<u>1/500</u> Sec.
Equivalent Focal Length	<u>85</u> MM	<u>38.33</u> MM

Resolution:

Angle Off Axis	0	10	20	30	35
Resolution L/MM High Contrast	91/101	102/109	120/106	80/42	70/33

NOTE: Index Resolution of 73.5 Lines/MM AWAR
Read From 4400 Film.

Distortion:

All distortions less than maximum allowable. Full Data to be reported as part of Photogrameter Data Reduction.

Alignment:

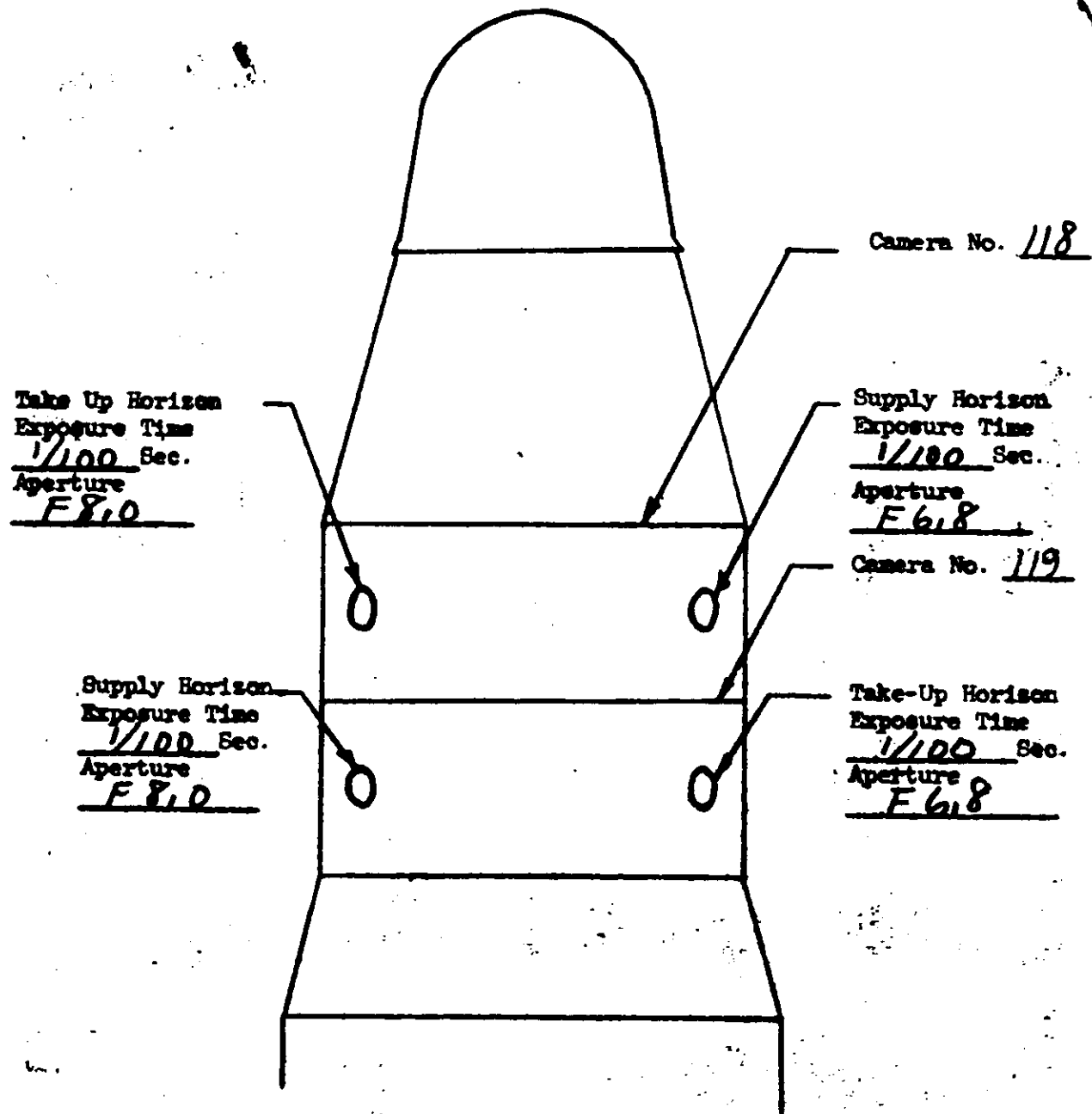
0.0005 " / 1.937 Inches 0.0007 " / 2.25 Inches

[REDACTED]
CORNO. 25

TOP SECRET

SYSTEM NO. J-04
VEHICLE NO. 1614
MISSION NO. 1019
CAMERA NOS. 118 & 119

HORIZON LINE SETTINGS (Viewed from top of vehicle in flight)



Flight Direction

~~TOP SECRET~~
~~TOP SECRET~~

COPY NO. _____

A. 1019-1 - LAUNCH 2144Z , 4/29/65
B. DRY
C. PERFORMANCE ESTIMATE, PART 1

10004
10005
10006

~~TOP SECRET~~
~~TOP SECRET~~

OPERATIONS SUMMARY

FWD	PAN	CAMERA	NUMBER	118											10010
OPN	NO	FRA	Q	LAT	LONG	HEIGHT	RANGE	DA	H	M	S	LTIM	S-TIM	10011	
PRE-FLT	136													10012	
1	5	0	13	ON	2 56 58	146 19W	700630	726222	29	23	14	07	1328	83647	10013
				OFF	2 54 19	145 46W	687314	712403	29	23	14	46	1331	83686	11001
2	5	1	25	ON	2 67 37	173 03W	760662	788529	30	00	42	34	1310	02554	11002
				OFF	2 62 57	170 57W	732256	759045	30	00	43	45	1319	02625	11003
3	6	1	47	ON	2 66 48	164 29E	753962	781574	30	02	13	53	1311	08033	11004
				OFF	2 58 11	167 35E	704404	730138	30	02	16	02	1326	08162	11005
3	6	2	21	ON	2 55 45	168 10E	691879	717140	30	02	16	39	1329	08199	11006
				OFF	2 52 06	168 51E	674532	699139	30	02	17	33	1333	08253	11007
4	6	1	48	ON	2 66 22	141 49E	749668	777117	30	03	45	07	1312	13507	11008
				OFF	2 57 43	144 49E	700636	726228	30	03	47	17	1326	13637	11009
4	6	2	19	ON	2 45 50	146 52E	647744	671343	30	03	50	12	1337	13812	11010
				OFF	2 42 38	147 13E	636695	659878	30	03	50	59	1339	13859	11011
5	1	1	62	ON	2 81 32	095 40E	855409	886893	30	05	12	12	1134	18732	11012
				OFF	2 69 59	116 48E	770991	799251	30	05	15	18	1302	18918	11013
5	1	1	47	ON	2 58 54	121 38E	705512	731289	30	05	18	06	1324	19086	11014
				OFF	2 50 52	123 17E	666891	691210	30	05	20	05	1333	19205	11015
5	1	1	18	ON	2 38 55	124 40E	625071	647818	30	05	23	01	1341	19381	11016
				OFF	2 35 58	124 53E	617928	640407	30	05	23	44	1343	19424	11017
5	1	2	18	ON	2 02 25	126 15E	636869	660057	30	05	31	53	1356	19913	11018
				OFF	3 00 43	126 20E	648423	672045	30	05	32	39	1357	19959	11019
5	1	3	15	ON	3 03 10	126 23E	658522	682524	30	05	33	15	1358	19995	11020
				OFF	3 05 47	126 27E	670287	694733	30	05	33	53	1359	20033	11021
6	7	1	103	ON	2 75 25	088 33E	806189	835790	30	06	45	01	1239	24301	11022
				OFF	2 57 37	099 04E	697580	723056	30	06	49	31	1325	24571	11023
6	7	2	23	ON	2 53 47	099 54E	678862	703632	30	06	50	28	1330	24628	11024
				OFF	2 50 05	100 31E	662510	686664	30	06	51	23	1333	24683	11025
6	7	3	24	ON	2 41 51	101 31E	632692	655725	30	06	53	24	1339	24804	11026
				OFF	2 38 09	101 50E	622457	645106	30	06	54	18	1341	24858	11027
6	7	4	50	ON	2 28 22	102 28E	605508	627521	30	06	56	41	1346	25001	11028
				OFF	2 20 44	102 48E	603067	624989	30	06	58	32	1349	25112	11029
7	9	1	17	ON	2 55 52	076 35E	687633	712734	30	08	21	04	1327	30064	11030
				OFF	2 53 16	077 07E	675325	699962	30	08	21	43	1330	30103	11031
7	9	2	21	ON	2 50 48	077 32E	664464	688692	30	08	22	19	1332	30139	11032
				OFF	2 47 41	077 58E	651955	675711	30	08	23	05	1335	30185	11033
7	9	3	15	ON	2 41 54	078 37E	632120	655131	30	08	24	30	1339	30270	11034
				OFF	2 39 41	078 50E	625788	648562	30	08	25	03	1340	30303	11035
7	9	4	48	ON	2 20 24	079 56E	603192	625118	30	08	29	44	1349	30584	11036
				OFF	2 13 44	080 09E	609716	631886	30	08	31	21	1352	30681	11037
8	4	0	9	ON	1 39 08	109 32W	1281927	1330084	30	09	30	55	0212	34255	11038
				OFF	1 42 04	109 17W	1260978	1308301	30	09	31	41	0214	34301	11039
8	4	1	71	ON	2 69 25	048 32E	762443	790378	30	09	48	47	1302	35327	11040
				OFF	2 55 42	053 44E	685617	710641	30	09	52	13	1327	35533	11041
9	2	1	21	ON	2 61 28	029 20E	713982	740078	30	11	21	53	1319	40913	11042
				OFF	2 57 50	030 22E	694877	720252	30	11	22	47	1324	40967	11043
9	2	2	32	ON	2 54 30	031 06E	678760	703526	30	11	23	36	1328	41016	11044
				OFF	2 49 19	031 59E	656398	680321	30	11	24	53	1332	41093	11045
12	2	1	18	ON	2 81 33	064 39W	842655	873650	30	15	49	55	1131	56995	11046
				OFF	2 78 11	053 34W	815933	845906	30	15	50	53	1216	57053	11047

~~SECRET~~

13	5	1	36	ON	3	29	11	055	45W	832011	862595	30	17	48	26	1405	64106	11049
			OFF	3	36	53	055	17W	896116	929160	30	17	50	20	1409	64220	11050	
16	5	0	15	ON	2	37	45	126	56W	616788	639224	30	22	05	24	1337	79524	11051
			OFF	2	35	17	126	46W	612119	634380	30	22	06	00	1338	79560	11052	
19	3	1	26	ON	2	71	49	155	01E	760906	788782	01	02	30	14	1250	09014	11053
			OFF	2	67	11	158	09E	732895	759708	01	02	31	25	1304	09085	11054	
19	3	2	41	ON	2	60	47	160	44E	698249	723751	01	02	33	01	1315	09181	11055
			OFF	2	54	02	162	23E	666770	691084	01	02	34	41	1324	09281	11056	
21	8	1	19	ON	2	80	27	094	02E	817271	847295	01	05	30	07	1146	19807	11057
			OFF	2	77	01	102	47E	792089	821151	01	05	31	04	1222	19864	11058	
21	8	2	61	ON	2	52	23	116	55E	658047	682033	01	05	37	16	1324	20236	11059
			OFF	2	42	45	118	11E	626048	648832	01	05	39	38	1332	20378	11060	
21	8	3	57	ON	2	30	27	119	07E	604860	626849	01	05	42	38	1339	20558	11061
			OFF	2	21	45	119	32E	604409	626381	01	05	44	45	1342	20685	11062	
22	2	1	29	ON	2	57	24	093	01E	678526	703284	01	07	07	07	1319	25627	11063
			OFF	2	52	43	093	59E	658482	682484	01	07	08	16	1324	25696	11064	
22	2	2	56	ON	2	23	33	096	34E	603578	625519	01	07	15	24	1341	26124	11065
			OFF	2	14	48	096	54E	613505	635818	01	07	17	32	1345	26252	11066	
22	2	3	28	ON	2	05	38	097	10E	637722	660942	01	07	19	45	1348	26385	11067
			OFF	2	00	52	097	17E	655761	679660	01	07	20	54	1350	26454	11068	
23	5	1	20	ON	2	81	26	044	11E	821643	851834	01	08	32	00	1128	30720	11069
			OFF	2	78	02	055	02E	795847	825054	01	08	32	58	1213	30778	11070	
23	5	2	88	ON	2	48	20	071	47E	641546	664911	01	08	40	26	1327	31226	11071
			OFF	2	34	42	073	06E	608961	631104	01	08	43	46	1336	31426	11072	
23	5	3	43	ON	2	18	34	073	53E	607949	630054	01	08	47	42	1343	31662	11073
			OFF	2	11	51	074	06E	620263	642828	01	08	49	20	1345	31760	11074	
24	9	0	10	ON	1	39	13	115	38W	1245892	1292615	01	09	48	31	0205	35311	11075
			OFF	1	42	07	115	23W	1224794	1270679	01	09	49	17	0207	35357	11076	
24	9	1	138	ON	2	59	17	046	46E	685092	710098	01	10	08	50	1315	36530	11077
			OFF	2	37	38	050	00E	613241	635544	01	10	14	09	1334	36849	11078	
24	9	2	43	ON	2	20	26	050	56E	606089	628123	01	10	18	20	1342	37100	11079
			OFF	2	13	45	051	10E	616451	638874	01	10	19	57	1344	37197	11080	
25	1	1	128	ON	2	60	26	023	34E	689433	714602	01	11	39	38	1313	41978	11081
			OFF	2	40	17	026	54E	618036	640519	01	11	44	35	1332	42275	11082	
27	3	1	27	ON	2	72	33	028	40W	753338	780927	01	14	38	45	1244	52725	11083
			OFF	2	67	54	025	16W	726017	752569	01	14	39	56	1258	52796	11084	
28	2	1	22	ON	2	62	38	045	47W	696792	722239	01	16	12	20	1309	58340	11085
			OFF	2	58	54	044	38W	679001	703776	01	16	13	16	1314	58396	11086	
30	2	1	50	ON	2	41	54	087	37W	619286	641816	01	19	19	35	1329	69575	11087
			OFF	2	34	09	087	00W	606669	628726	01	19	21	28	1333	69688	11088	
31	2	1	31	ON	2	34	01	109	52W	606389	628435	01	20	52	35	1333	75155	11089
			OFF	2	29	11	109	35W	603519	625458	01	20	53	46	1335	75226	11090	
34	3	1	18	ON	2	70	58	172	32E	733918	760770	02	01	16	41	1246	04601	11091
			OFF	2	67	46	174	39E	716110	742288	02	01	17	30	1256	04650	11092	
38	2	1	26	ON	2	56	58	087	04E	661320	685429	02	07	24	28	1312	26668	11093
			OFF	2	52	44	087	56E	645608	669126	02	07	25	31	1317	26731	11094	
38	2	2	24	ON	2	41	55	089	21E	616456	638880	02	07	28	10	1325	26890	11095
			OFF	2	38	10	089	41E	610279	632471	02	07	29	05	1327	26945	11096	
40	4	1	27	ON	2	70	28	035	40E	723341	749793	02	10	23	14	1245	37394	11097
			OFF	2	65	49	038	24E	698958	724487	02	10	24	25	1258	37465	11098	
40	4	2	84	ON	2	59	25	040	42E	669586	694007	02	10	26	00	1308	37560	11099
			OFF	2	46	11	043	09E	625120	647868	02	10	29	15	1321	37755	11100	
41	2	1	29	ON	2	56	21	018	36E	656529	680458	02	11	57	49	1312	43069	11101
			OFF	2	51	42	019	29E	640271	663588	02	11	58	58	1316	43138	11102	

~~SECRET~~

41	2	2	23	ON	2	49	16	019	52E	632875	655915	02	11	59	34	1319	43174	11103
				OFF	2	45	38	020	20E	623397	646081	02	12	00	27	1321	43227	11104
47	1	1	21	ON	2	37	54	116	08W	608947	631089	02	21	08	42	1324	76122	11105
				OFF	2	34	38	115	54W	606475	628524	02	21	09	30	1325	76170	11106
54	2	1	62	ON	2	56	28	081	14E	646994	670564	03	07	41	32	1306	27692	11107
				OFF	2	46	42	082	52E	620507	643083	03	07	43	56	1315	27836	11108
55	7	1	18	ON	2	74	26	048	50E	725617	752154	03	09	08	05	1223	32885	11109
				OFF	2	71	22	051	53E	709294	735213	03	09	08	52	1236	32932	11110
55	7	2	43	ON	2	30	26	061	22E	606916	628982	03	09	18	56	1324	33536	11111
				OFF	2	23	43	061	42E	613453	635763	03	09	20	34	1327	33634	11112
55	7	0	7	ON	4	20	18	129	39W	1534967	1593323	03	10	07	08	0128	36428	11113
				OFF	4	18	22	129	35W	1527715	1585776	03	10	07	39	0129	36459	11114
56	7	0	10	ON	1	39	10	127	40W	1173256	1217102	03	10	22	44	0152	37364	11115
				OFF	1	42	05	127	24W	1151400	1194384	03	10	23	30	0153	37410	11116
56	2	0	6	ON	4	20	28	152	32W	1534679	1593024	03	11	38	08	0128	41888	11117
				OFF	4	18	31	152	28W	1527289	1585333	03	11	38	40	0128	41920	11118
57	2	1	43	ON	2	54	34	013	01E	638761	662022	03	12	15	08	1307	44108	11119
				OFF	2	47	50	014	07E	621540	644155	03	12	16	47	1313	44207	11120
59	1	1	21	ON	2	81	39	060	16W	764107	792105	03	15	10	17	1109	54617	11121
				OFF	2	78	14	048	52W	741911	769066	03	15	11	15	1155	54675	11122
62	4	1	20	ON	2	32	23	098	49W	607274	629354	03	19	55	46	1320	71746	11123
				OFF	2	29	14	098	38W	609222	631375	03	19	56	32	1321	71792	11124
63	4	1	21	ON	2	36	27	121	57W	607076	629149	03	21	25	49	1318	77149	11125
				OFF	2	33	11	121	44W	607173	629248	03	21	26	37	1319	77197	11126
66	5	1	42	ON	2	66	42	163	20E	675440	700081	04	01	51	30	1244	06690	11127
				OFF	2	60	02	165	53E	650082	673769	04	01	53	09	1256	06789	11128
68	4	1	40	ON	2	75	43	109	50E	716066	742242	04	04	51	16	1210	17476	11129
				OFF	2	69	03	116	16E	683767	708723	04	04	52	58	1238	17578	11130
70	2	1	18	ON	2	56	08	075	25E	635825	658976	04	07	58	15	1259	28695	11131
				OFF	2	53	14	076	00E	628372	651243	04	07	58	58	1302	28738	11132
70	2	2	51	ON	2	50	50	076	24E	623042	645713	04	07	59	32	1305	28772	11133
				OFF	2	42	54	077	25E	611070	633292	04	08	01	28	1311	28888	11134
71	6	0	10	ON	1	39	04	110	42W	1140155	1182696	04	09	08	19	0145	32899	11135
				OFF	1	41	57	110	27W	1118428	1160115	04	09	09	04	0147	32944	11136
71	9	1	54	ON	2	25	30	055	44E	618072	640556	04	09	36	45	1319	34605	11137
				OFF	2	16	51	056	04E	639133	662407	04	09	38	51	1323	34731	11138
72	5	1	96	ON	2	61	20	028	18E	650612	674318	04	10	59	01	1252	39541	11139
				OFF	2	46	34	031	16E	615223	637601	04	11	02	38	1307	39758	11140
72	5	2	65	ON	2	20	25	033	05E	629721	652642	04	11	09	00	1321	40140	11141
				OFF	2	09	44	033	26E	666251	690544	04	11	11	36	1325	40296	11142
73	7	1	32	ON	3	12	31	011	09E	797991	827275	04	12	48	05	1332	46085	11143
				OFF	3	19	13	011	22E	849522	880776	04	12	49	44	1335	46184	11144
74	1	1	59	ON	2	22	54	012	44W	625144	647893	04	14	10	27	1319	51027	11145
				OFF	2	13	14	012	23W	654246	678088	04	14	12	48	1323	51168	11146
76	1	1	11	ON	2	75	32	072	48W	706119	731919	04	16	59	33	1208	61173	11147
				OFF	2	73	42	070	31W	697200	722662	04	17	00	02	1217	61202	11148
76	3	1	21	ON	3	21	03	057	08W	869415	901432	04	17	23	15	1334	62595	11149
				OFF	3	25	43	056	57W	908935	942472	04	17	24	25	1336	62665	11150
78	5	1	48	ON	2	24	53	104	16W	623492	646179	04	20	14	04	1316	72844	11151
				OFF	2	17	09	103	58W	644165	667628	04	20	15	57	1320	72957	11152
79	5	0	16	ON	2	34	15	127	38W	611216	633444	04	21	42	48	1312	78168	11153
				OFF	2	31	47	127	29W	613308	635614	04	21	43	24	1313	78204	11154

NOTE - DATA INDICATE AN UNDESIRE OPERATION SEGMENT LISTED ABOVE AS 076 - 1 - 1. THE CAMERA SYSTEM

~~SECRET~~

████████████████████
WAS INADVERTANTLY ENABLED FOR 29 SECONDS DURING
ISSUANCE OF COMMANDS BY THE ██████████ TRACKING STATION.
COMMANDING WAS NOT PERFORMED ACCORDING TO SPECIFIC
INSTRUCTIONS OF THE H. Q. RESIDENT OFFICER.
CAMERA TURNOFF WAS MADE BY THE REDUNDANT OFF H-TIMER
BRUSH COMMAND, WITH NO SUBSEQUENT ABNORMAL OPERATION
ANTICIPATED.

11157
11158
11159
11160
11161
11162
11163

████████████████████

~~SECRET~~

OPERATIONS SUMMARY

AFT PAN CAMERA		NUMBER	119														
OPN NO	FRA	Q	LAT	LONG	HEIGHT	RANGE	DA	H	M	S	LTIM	S-TIM					
PRE-FLT 135																	
1	5	0	12	ON	2 57 59	146 38W	700630	726222	29	23	14	07	1327	83647			10020
				OFF	2 55 19	146 01W	687314	712403	29	23	14	46	1330	83686			10021
2	5	1	25	ON	2 68 42	173 45W	760662	788529	30	00	42	34	1307	02554			10022
				OFF	2 64 00	171 25W	732256	759045	30	00	43	45	1318	02625			10023
3	6	1	4	ON	2 60 04	167 01E	708926	734832	30	02	15	50	1323	08150			12001
				OFF	2 59 12	167 15E	704406	730141	30	02	16	03	1325	08163			12002
3	6	2	21	ON	2 56 45	167 52E	691879	717140	30	02	16	39	1328	08199			12003
				OFF	2 53 05	168 37E	674532	699139	30	02	17	33	1332	08253			12004
4	6	1	5	ON	2 59 40	144 15E	705493	731268	30	03	47	03	1324	13623			12005
				OFF	2 58 44	144 30E	700639	726231	30	03	47	17	1325	13637			12006
4	6	2	19	ON	2 46 47	146 41E	647744	671343	30	03	50	12	1336	13812			12007
				OFF	2 43 34	147 03E	636695	659878	30	03	50	59	1339	13859			12008
5	1	1	259	ON	2 82 31	089 57E	855415	886899	30	05	12	12	1112	18732			12009
				OFF	2 36 52	124 46E	617929	640408	30	05	23	44	1342	19424			12010
5	1	2	18	ON	2 03 21	126 10E	636869	660057	30	05	31	53	1356	19913			12011
				OFF	3 00 13	126 14E	648423	672045	30	05	32	39	1357	19959			12012
5	1	3	14	ON	3 02 13	126 18E	658522	682524	30	05	33	15	1358	19995			12013
				OFF	3 04 48	126 22E	670287	694733	30	05	33	53	1359	20033			12014
6	7	1	3	ON	2 76 32	086 47E	806194	835795	30	06	45	01	1232	24301			12015
				OFF	2 75 57	087 43E	802045	831488	30	06	45	10	1236	24310			12016
6	7	1	5	ON	2 59 36	098 30E	702532	728196	30	06	49	17	1323	24557			12017
				OFF	2 58 38	098 45E	697583	723059	30	06	49	31	1324	24571			12018
6	7	2	22	ON	2 54 46	099 39E	678862	703632	30	06	50	28	1329	24628			12019
				OFF	2 51 03	100 19E	662510	686664	30	06	51	23	1332	24683			12020
6	7	3	23	ON	2 42 46	101 22E	632692	655725	30	06	53	24	1338	24804			12021
				OFF	2 39 03	101 42E	622457	645106	30	06	54	18	1341	24858			12022
6	7	4	49	ON	2 29 15	102 22E	605508	627521	30	06	56	41	1346	25001			12023
				OFF	2 21 37	102 43E	603067	624989	30	06	58	32	1349	25112			12024
7	9	1	17	ON	2 56 52	076 18E	687633	712734	30	08	21	04	1326	30064			12025
				OFF	2 54 15	076 52E	675325	699962	30	08	21	43	1329	30103			12026
7	9	2	20	ON	2 51 46	077 19E	664464	688692	30	08	22	19	1331	30139			12027
				OFF	2 48 39	077 47E	651955	675711	30	08	23	05	1334	30185			12028
7	9	3	49	ON	2 42 50	078 29E	632122	655133	30	08	24	30	1338	30270			12029
				OFF	2 35 35	079 05E	614243	636583	30	08	26	16	1342	30376			12030
7	9	4	46	ON	2 21 16	079 51E	603192	625118	30	08	29	44	1349	30584			12031
				OFF	2 14 37	080 04E	609716	631886	30	08	31	21	1351	30681			12032
8	4	0	9	ON	1 37 16	109 48W	1281927	1330084	30	09	30	55	0211	34255			12033
				OFF	1 40 14	109 34W	1260978	1308301	30	09	31	41	0213	34301			12034
8	4	1	70	ON	2 70 30	047 42E	762443	790378	30	09	48	47	1259	35327			12035
				OFF	2 56 42	053 28E	685617	710641	30	09	52	13	1326	35533			12036
9	2	1	21	ON	2 62 30	028 55E	713982	740078	30	11	21	53	1317	40913			12037
				OFF	2 58 51	030 03E	694877	720252	30	11	22	47	1323	40967			12038
9	2	2	31	ON	2 55 30	030 50E	678760	703526	30	11	23	36	1327	41016			12039
				OFF	2 50 17	031 47E	656398	680321	30	11	24	53	1332	41093			12040
12	2	1	17	ON	2 82 31	070 18W	842655	873650	30	15	49	55	1108	56995			12041
				OFF	2 79 16	056 18W	815933	845906	30	15	50	53	1205	57053			12042
13	5	1	35	ON	3 27 58	055 54W	832011	862595	30	17	48	26	1404	64106			12043
				OFF	3 35 34	055 27W	896116	929160	30	17	50	20	1408	64220			12044



~~SECRET~~

16	5	0	15	ON	2	38	39	127	04W	616788	639224	30	22	05	24	1337	79524	12049
			OFF	2	36	11	126	53W	612119	634380	30	22	06	00	1338	79560	12050	
19	3	1	26	ON	2	72	53	153	58E	760906	788782	01	02	30	14	1246	09014	12051
			OFF	2	68	14	157	30E	732895	759708	01	02	31	25	1301	09085	12052	
19	3	2	40	ON	2	61	48	160	21E	698249	723751	01	02	33	01	1314	09181	12053
			OFF	2	55	01	162	07E	666770	691084	01	02	34	41	1323	09281	12054	
21	8	1	19	ON	2	81	27	089	47E	817271	847295	01	05	30	07	1129	19807	12055
			OFF	2	78	05	100	36E	792089	821151	01	05	31	04	1213	19864	12056	
21	8	2	60	ON	2	53	20	116	41E	658047	682033	01	05	37	16	1324	20236	12057
			OFF	2	43	40	118	03E	626048	648832	01	05	39	38	1331	20378	12058	
21	8	3	56	ON	2	31	20	119	01E	604860	626849	01	05	42	38	1338	20558	12059
			OFF	2	22	38	119	26E	604409	626381	01	05	44	45	1342	20685	12060	
22	2	1	28	ON	2	58	23	092	42E	678526	703284	01	07	07	07	1317	25627	12061
			OFF	2	53	41	093	45E	658482	682484	01	07	08	16	1323	25696	12062	
22	2	2	55	ON	2	24	26	096	29E	603578	625519	01	07	15	24	1341	26124	12063
			OFF	2	15	42	096	49E	613505	635818	01	07	17	32	1344	26252	12064	
22	2	3	28	ON	2	06	34	097	05E	637722	660942	01	07	19	45	1348	26385	12065
			OFF	2	01	50	097	12E	655761	679660	01	07	20	54	1349	26454	12066	
23	5	1	19	ON	2	82	24	038	51E	821643	851834	01	08	32	00	1107	30720	12067
			OFF	2	79	05	052	26E	795847	825054	01	08	32	58	1202	30778	12068	
23	5	2	86	ON	2	49	16	071	35E	641546	664911	01	08	40	26	1326	31226	12069
			OFF	2	35	36	072	59E	608961	631104	01	08	43	46	1335	31426	12070	
23	5	3	42	ON	2	19	27	073	48E	607949	630054	01	08	47	42	1342	31662	12071
			OFF	2	12	46	074	01E	620263	642828	01	08	49	20	1345	31760	12072	
24	9	0	10	ON	1	37	24	115	54W	1245892	1292615	01	09	48	31	0204	35311	12073
			OFF	1	40	19	115	40W	1224794	1270679	01	09	49	17	0206	35357	12074	
24	9	1	137	ON	2	60	17	046	25E	685092	710098	01	10	08	50	1314	36530	12075
			OFF	2	38	31	049	53E	613241	635544	01	10	14	09	1333	36849	12076	
24	9	2	42	ON	2	21	19	050	51E	606089	628123	01	10	18	20	1341	37100	12077
			OFF	2	14	39	051	05E	616451	638874	01	10	19	57	1344	37197	12078	
25	1	1	126	ON	2	61	26	023	11E	689433	714602	01	11	39	38	1312	41978	12079
			OFF	2	41	11	026	46E	618036	640519	01	11	44	35	1331	42275	12080	
27	3	1	26	ON	2	73	36	029	48W	753338	780927	01	14	38	45	1239	52725	12081
			OFF	2	68	56	025	57W	726017	752569	01	14	39	56	1256	52796	12082	
28	2	1	22	ON	2	63	39	046	13W	696792	722239	01	16	12	20	1307	58340	12083
			OFF	2	59	54	044	58W	679001	703776	01	16	13	16	1313	58396	12084	
30	2	1	50	ON	2	42	48	087	46W	619286	641816	01	19	19	35	1328	69575	12085
			OFF	2	35	02	087	07W	606669	628726	01	19	21	28	1333	69688	12086	
31	2	1	31	ON	2	34	55	109	59W	606389	628435	01	20	52	35	1332	75155	12087
			OFF	2	30	04	109	41W	603519	625458	01	20	53	46	1335	75226	12088	
34	3	1	18	ON	2	72	01	171	36E	733918	760770	02	01	16	41	1243	04601	12089
			OFF	2	68	48	173	59E	716110	742288	02	01	17	30	1253	04650	12090	
38	2	1	25	ON	2	57	56	086	47E	661320	685429	02	07	24	28	1311	26668	12091
			OFF	2	53	40	087	42E	645608	669126	02	07	25	31	1316	26731	12092	
38	2	2	23	ON	2	42	49	089	13E	616456	638880	02	07	28	10	1325	26890	12093
			OFF	2	39	03	089	33E	610279	632471	02	07	29	05	1327	26945	12094	
40	4	1	27	ON	2	71	30	034	47E	723341	749793	02	10	23	14	1242	37394	12095
			OFF	2	66	49	037	51E	698958	724487	02	10	24	25	1255	37465	12096	
40	4	2	83	ON	2	60	23	040	22E	669586	694007	02	10	26	00	1307	37560	12097
			OFF	2	47	06	042	59E	625120	647868	02	10	29	15	1321	37755	12098	
41	2	1	28	ON	2	57	19	018	19E	656529	680458	02	11	57	49	1311	43069	12099
			OFF	2	52	38	019	16E	640271	663588	02	11	58	58	1316	43138	12100	
41	2	2	22	ON	2	50	11	019	41E	632875	655915	02	11	59	34	1318	43174	12101
			OFF	2	46	33	020	10E	623397	646081	02	12	00	27	1321	43227	12102	

ARABET
10000

47	1	1	21	ON	2	38	47	116	16W	608947	631089	02	21	08	42	1323	76122	12103
				OFF	2	35	31	116	01W	606475	628524	02	21	09	30	1325	76170	12104
54	2	1	62	ON	2	57	24	080	57E	646994	670564	03	07	41	32	1305	27692	12105
				OFF	2	47	36	082	42E	620507	643083	03	07	43	56	1314	27836	12106
55	7	1	18	ON	2	75	27	047	27E	725617	752154	03	09	08	05	1217	32885	12107
				OFF	2	72	22	050	57E	709294	735213	03	09	08	52	1232	32932	12108
55	7	2	42	ON	2	31	19	061	16E	606916	628982	03	09	18	56	1324	33536	12109
				OFF	2	24	37	061	36E	613453	635763	03	09	20	34	1327	33634	12110
55	7	0	6	ON	4	22	33	129	52W	1534967	1593323	03	10	07	08	0127	36428	12111
				OFF	4	20	36	129	48W	1527715	1585776	03	10	07	39	0128	36459	12112
56	7	0	10	ON	1	37	27	127	54W	1173256	1217102	03	10	22	44	0151	37364	12113
				OFF	1	40	24	127	40W	1151400	1194384	03	10	23	30	0152	37410	12114
56	2	0	6	ON	4	22	43	152	45W	1534679	1593024	03	11	38	08	0127	41888	12115
				OFF	4	20	45	152	41W	1527289	1585333	03	11	38	40	0127	41920	12116
57	2	1	42	ON	2	55	30	012	46E	638761	662022	03	12	15	08	1306	44108	12117
				OFF	2	48	45	013	56E	621540	644155	03	12	16	47	1312	44207	12118
59	1	1	21	ON	2	82	31	065	27W	764107	792105	03	15	10	17	1048	54617	12119
				OFF	2	79	13	051	21W	741911	769066	03	15	11	15	1145	54675	12120
62	4	1	19	ON	2	33	17	098	55W	607274	629354	03	19	55	46	1320	71746	12121
				OFF	2	30	08	098	44W	609222	631375	03	19	56	32	1321	71792	12122
63	4	1	20	ON	2	37	20	122	04W	607076	629149	03	21	25	49	1317	77149	12123
				OFF	2	34	04	121	50W	607173	629248	03	21	26	37	1319	77197	12124
66	5	1	41	ON	2	67	40	162	46E	675440	700081	04	01	51	30	1242	06690	12125
				OFF	2	60	58	165	33E	650082	673769	04	01	53	09	1255	06789	12126
68	4	1	97	ON	2	76	42	108	14E	716070	742246	04	04	51	16	1204	17476	12127
				OFF	2	60	54	119	50E	648588	672218	04	04	55	14	1254	17714	12128
70	2	1	18	ON	2	57	03	075	09E	635825	658976	04	07	58	15	1258	28695	12129
				OFF	2	54	09	075	46E	628372	651243	04	07	58	58	1302	28738	12130
70	2	2	51	ON	2	51	45	076	12E	623042	645713	04	07	59	32	1304	28772	12131
				OFF	2	43	47	077	16E	611070	633292	04	08	01	28	1310	28888	12132
71	6	0	10	ON	1	37	24	110	56W	1140155	1182696	04	09	08	19	0144	32899	12133
				OFF	1	40	19	110	42W	1118428	1160115	04	09	09	04	0146	32944	12134
71	9	1	53	ON	2	26	24	055	38E	618072	640556	04	09	36	45	1319	34605	12135
				OFF	2	17	47	055	59E	639133	662407	04	09	38	51	1322	34731	12136
72	5	1	94	ON	2	62	16	027	55E	650612	674318	04	10	59	01	1250	39541	12137
				OFF	2	47	28	031	06E	615223	637601	04	11	02	38	1307	39758	12138
72	5	2	64	ON	2	21	21	032	59E	629721	652642	04	11	09	00	1321	40140	12139
				OFF	2	10	43	033	20E	666251	690544	04	11	11	36	1325	40296	12140
73	7	1	31	ON	3	11	21	011	03E	797991	827275	04	12	48	05	1332	46085	12141
				OFF	3	17	59	011	15E	849522	880776	04	12	49	44	1334	46184	12142
74	1	1	59	ON	2	23	49	012	49W	625144	647893	04	14	10	27	1319	51027	12143
				OFF	2	14	12	012	29W	654246	678088	04	14	12	48	1322	51168	12144
76	1	1	11	ON	2	76	30	074	20W	706119	731919	04	16	59	33	1202	61173	12145
				OFF	2	74	40	071	43W	697200	722662	04	17	00	02	1213	61202	12146
76	3	1	20	ON	3	19	46	057	16W	869415	901432	04	17	23	15	1334	62595	12147
				OFF	3	24	23	057	05W	908935	942472	04	17	24	25	1336	62665	12148
78	5	1	47	ON	2	25	48	104	22W	623492	646179	04	20	14	04	1316	72844	12149
				OFF	2	18	06	104	03W	644165	667628	04	20	15	57	1319	72957	12150
79	5	0	15	ON	2	35	08	127	45W	611216	633444	04	21	42	48	1311	78168	12151
				OFF	2	32	41	127	36W	613308	635614	04	21	43	24	1313	78204	12152

NOTE - DATA INDICATE AN UNDESIRED OPERATION SEGMENT LISTED ABOVE AS 076 - 1 - 1. THE CAMERA SYSTEM WAS INADVERTANTLY ENABLED FOR 29 SECONDS DURING ISSUANCE OF COMMANDS BY THE TRACKING STATION.

ABOVE

[REDACTED]

COMMANDING WAS NOT PERFORMED ACCORDING TO SPECIFIC INSTRUCTIONS OF THE H. Q. RESIDENT OFFICER. CAMERA TURNOFF WAS MADE BY THE REDUNDANT OFF H-TIMER BRUSH COMMAND, WITH NO SUBSEQUENT ABNORMAL OPERATION ANTICIPATED.

12157
12158
12159
12160
12161

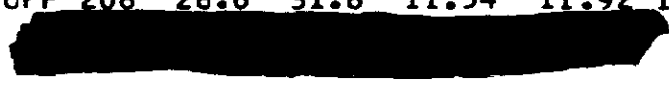
[REDACTED]

CRASH
[REDACTED]

~~SECRET~~

PHOTOGRAPHIC SUMMARY

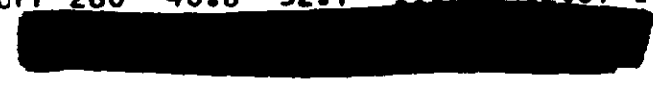
FWD PAN	CAMERA NO	118	0.2500	SLIT	W/25	FILTER	4404	FILM				
OPN NO	FRA	FEET	ET	S-EL	S-DIR	EV	FULL	INT	PRI			
PRE-FLT	136	359.7										
1 5 0	13	34.4	ON 228	44.2	41.0	11.69	12.09	11.49	10.89			10030
			OFF 233	46.2	42.8	11.71	12.10	11.50	10.90			10031
2 5 1	25	66.1	ON 206	35.7	35.5	11.54	12.04	11.44	10.84			10032
			OFF 215	39.5	37.6	11.60	12.06	11.46	10.86			10033
3 6 1	47	124.3	ON 208	36.4	35.7	11.56	12.04	11.44	10.84			10034
			OFF 225	43.4	40.0	11.67	12.09	11.49	10.89			10035
3 6 2	21	55.5	ON 230	45.2	41.6	11.70	12.09	11.49	10.89			10036
			OFF 236	48.0	44.2	11.74	12.10	11.50	10.90			10037
4 6 1	48	127.0	ON 210	36.8	35.8	11.57	12.04	11.44	10.84			10038
			OFF 227	43.8	40.2	11.68	12.09	11.49	10.89			10039
4 6 2	19	50.3	ON 247	52.4	49.6	11.80	12.10	11.50	10.90			10040
			OFF 251	54.4	52.9	11.82	12.10	11.50	10.90			10041
5 1 1	62	164.0	ON 190	23.1	32.9	11.42	11.84	11.24	10.64			10042
			OFF 215	33.8	34.3	11.60	12.02	11.42	10.82			10043
5 1 1	47	124.3	ON 237	42.9	39.3	11.74	12.08	11.48	10.88			10044
			OFF 249	49.0	44.9	11.81	12.10	11.50	10.90			10045
5 1 1	18	47.6	ON 262	56.6	57.2	11.89	12.10	11.50	10.90			10046
			OFF 264	58.1	61.2	11.90	12.10	11.50	10.90			10047
5 1 2	18	47.6	ON 251	58.0	119.3	11.83	12.10	11.50	10.90			10048
			OFF 247	56.3	123.5	11.80	12.10	11.50	10.90			10049
5 1 3	15	39.7	ON 244	54.9	126.4	11.78	12.10	11.50	10.90			10050
			OFF 240	53.3	129.3	11.76	12.10	11.50	10.90			10051
6 7 1	103	272.4	ON 210	29.0	32.7	11.57	11.96	11.36	10.76			10052
			OFF 246	44.0	40.0	11.79	12.09	11.49	10.89			10053
6 7 2	23	60.8	ON 252	46.9	42.5	11.83	12.10	11.50	10.90			10054
			OFF 257	49.6	45.4	11.86	12.10	11.50	10.90			10055
6 7 3	24	63.5	ON 267	55.0	53.6	11.91	12.10	11.50	10.90			10056
			OFF 269	57.1	58.1	11.93	12.10	11.50	10.90			10057
6 7 4	50	132.2	ON 274	61.2	73.2	11.95	12.10	11.50	10.90			10058
			OFF 273	62.5	87.3	11.94	12.10	11.50	10.90			10059
7 9 1	17	45.0	ON 249	45.4	41.0	11.81	12.09	11.49	10.89			10060
			OFF 252	47.3	42.8	11.83	12.10	11.50	10.90			10061
7 9 2	21	55.5	ON 256	49.1	44.7	11.85	12.10	11.50	10.90			10062
			OFF 260	51.3	47.4	11.87	12.10	11.50	10.90			10063
7 9 3	15	39.7	ON 266	55.0	53.4	11.91	12.10	11.50	10.90			10064
			OFF 268	56.3	56.0	11.92	12.10	11.50	10.90			10065
7 9 4	48	127.0	ON 273	62.6	88.0	11.94	12.10	11.50	10.90			10066
			OFF 269	62.1	100.8	11.93	12.10	11.50	10.90			10067
8 4 0	9	23.8	ON 124	-27.4	31.2	10.80	0.	0.	0.			10068
			OFF 125	-24.9	30.5	10.82	0.	0.	0.			10069
8 4 1	71	187.8	ON 224	34.4	34.1	11.66	12.02	11.42	10.82			10070
			OFF 249	45.5	40.9	11.81	12.09	11.49	10.89			10071
9 2 1	21	55.5	ON 240	41.0	37.4	11.76	12.07	11.47	10.87			10072
			OFF 246	43.9	39.5	11.79	12.09	11.49	10.89			10073
9 2 2	32	84.6	ON 251	46.5	41.6	11.83	12.10	11.50	10.90			10074
			OFF 258	50.3	45.7	11.87	12.10	11.50	10.90			10075
12 2 1	18	47.6	ON 198	23.2	32.1	11.48	11.85	11.25	10.65			10076
			OFF 206	26.6	31.6	11.54	11.92	11.32	10.72			10077



~~SECRET~~



13	5	1	36	95.2	ON	196	36.1	146.1	11.47	12.04	11.44	10.84	13049
					OFF	184	29.6	148.8	11.37	11.97	11.37	10.77	13050
16	5	0	15	39.7	ON	271	58.1	57.4	11.94	12.10	11.50	10.90	13051
					OFF	272	59.4	60.9	11.94	12.10	11.50	10.90	13052
19	3	1	26	68.8	ON	224	22.2	29.2	11.66	11.82	11.22	10.62	13053
					OFF	233	26.4	30.0	11.72	11.92	11.32	10.72	13054
19	3	2	41	108.4	ON	245	32.0	31.8	11.79	12.00	11.40	10.80	13055
					OFF	256	37.7	34.3	11.85	12.05	11.45	10.85	13056
21	8	1	19	50.3	ON	204	14.0	29.0	11.53	11.42	10.82	10.22	13057
					OFF	212	17.4	28.6	11.58	11.63	11.03	10.43	13058
21	8	2	61	161.3	ON	257	39.2	34.8	11.86	12.06	11.46	10.86	13059
					OFF	267	47.0	40.3	11.91	12.10	11.50	10.90	13060
21	8	3	57	150.8	ON	272	55.6	51.4	11.94	12.10	11.50	10.90	13061
					OFF	271	60.4	63.1	11.93	12.10	11.50	10.90	13062
22	2	1	29	76.7	ON	250	35.0	32.6	11.82	12.03	11.43	10.83	13063
					OFF	257	39.0	34.5	11.86	12.06	11.46	10.86	13064
22	2	2	56	148.1	ON	271	59.6	60.3	11.94	12.10	11.50	10.90	13065
					OFF	266	63.0	75.2	11.91	12.10	11.50	10.90	13066
22	2	3	28	74.1	ON	256	63.9	93.7	11.85	12.10	11.50	10.90	13067
					OFF	249	63.2	103.2	11.82	12.10	11.50	10.90	13068
23	5	1	20	52.9	ON	202	13.0	29.2	11.51	11.35	10.75	10.15	13069
					OFF	210	16.5	28.4	11.57	11.58	10.98	10.38	13070
23	5	2	88	232.8	ON	262	42.7	36.6	11.89	12.08	11.48	10.88	13071
					OFF	272	53.0	46.6	11.94	12.10	11.50	10.90	13072
23	5	3	43	113.7	ON	269	61.9	68.3	11.92	12.10	11.50	10.90	13073
					OFF	263	63.7	81.0	11.89	12.10	11.50	10.90	13074
24	9	0	10	26.5	ON	125	-37.9	33.7	10.82	0.	0.	0.	13075
					OFF	127	-35.5	32.5	10.84	0.	0.	0.	13076
24	9	1	138	365.0	ON	248	33.5	31.7	11.81	12.02	11.42	10.82	13077
					OFF	270	51.0	43.8	11.93	12.10	11.50	10.90	13078
24	9	2	43	113.7	ON	270	61.3	65.0	11.93	12.10	11.50	10.90	13079
					OFF	265	63.5	77.2	11.90	12.10	11.50	10.90	13080
25	1	1	128	338.6	ON	244	32.6	31.2	11.79	12.01	11.41	10.81	13081
					OFF	267	49.1	41.6	11.91	12.10	11.50	10.90	13082
27	3	1	27	71.4	ON	223	21.8	28.2	11.65	11.80	11.20	10.60	13083
					OFF	232	26.0	29.0	11.71	11.91	11.31	10.71	13084
28	2	1	22	58.2	ON	242	30.7	30.2	11.77	11.98	11.38	10.78	13085
					OFF	248	34.0	31.3	11.81	12.02	11.42	10.82	13086
30	2	1	50	132.2	ON	267	48.2	39.7	11.91	12.10	11.50	10.90	13087
					OFF	270	53.9	46.3	11.93	12.10	11.50	10.90	13088
31	2	1	31	82.0	ON	270	54.1	46.3	11.93	12.10	11.50	10.90	13089
					OFF	270	57.3	51.7	11.93	12.10	11.50	10.90	13090
34	3	1	18	47.6	ON	230	23.4	27.6	11.70	11.85	11.25	10.65	13091
					OFF	236	26.4	28.2	11.73	11.92	11.32	10.72	13092
38	2	1	26	68.8	ON	254	36.1	30.8	11.84	12.04	11.44	10.84	13093
					OFF	259	39.8	32.6	11.87	12.07	11.47	10.87	13094
38	2	2	24	63.5	ON	268	48.7	38.7	11.92	12.10	11.50	10.90	13095
					OFF	269	51.6	41.6	11.92	12.10	11.50	10.90	13096
40	4	1	27	71.4	ON	233	24.1	27.0	11.71	11.87	11.27	10.67	13097
					OFF	241	28.4	28.0	11.76	11.95	11.35	10.75	13098
40	4	2	84	222.2	ON	251	34.1	29.8	11.82	12.02	11.42	10.82	13099
					OFF	265	45.4	35.7	11.90	12.09	11.49	10.89	13100
41	2	1	29	76.7	ON	255	36.8	30.7	11.85	12.04	11.44	10.84	13101
					OFF	260	40.8	32.7	11.88	12.07	11.47	10.87	13102



~~SECRET~~

41	2	2	23	60.8	ON 263	42.9	33.9	11.89	12.08	11.48	10.88	13103
					OFF 266	45.9	35.9	11.91	12.10	11.50	10.90	13104
47	1	1	21	55.5	ON 270	52.4	40.6	11.93	12.10	11.50	10.90	13105
					OFF 270	54.8	43.6	11.93	12.10	11.50	10.90	13106
54	2	1	62	164.0	ON 259	37.3	29.1	11.87	12.05	11.45	10.85	13107
					OFF 267	45.7	33.6	11.91	12.10	11.50	10.90	13108
55	7	1	18	47.6	ON 230	20.8	24.9	11.70	11.77	11.17	10.57	13109
					OFF 235	23.7	25.2	11.73	11.86	11.26	10.66	13110
55	7	2	43	113.7	ON 267	58.4	47.1	11.91	12.10	11.50	10.90	13111
					OFF 263	62.6	56.5	11.89	12.10	11.50	10.90	13112
55	7	0	7	18.5	ON 117	-64.4	117.6	10.73	0.	0.	0.	13113
					OFF 117	-65.2	113.9	10.73	0.	0.	0.	13114
56	7	0	10	26.5	ON 129	-38.9	29.6	10.86	0.	0.	0.	13115
					OFF 131	-36.3	28.5	10.89	0.	0.	0.	13116
56	2	0	6	15.9	ON 117	-64.4	118.0	10.73	0.	0.	0.	13117
					OFF 117	-65.3	114.2	10.73	0.	0.	0.	13118
57	2	1	43	113.7	ON 260	39.1	29.5	11.87	12.06	11.46	10.86	13119
					OFF 265	44.9	32.6	11.90	12.09	11.49	10.89	13120
59	1	1	21	55.5	ON 216	13.5	25.3	11.61	11.39	10.79	10.19	13121
					OFF 223	17.1	24.4	11.66	11.61	11.01	10.41	13122
62	4	1	20	52.9	ON 266	57.6	43.9	11.91	12.10	11.50	10.90	13123
					OFF 265	59.8	47.6	11.90	12.10	11.50	10.90	13124
63	4	1	21	55.5	ON 268	54.6	39.7	11.92	12.10	11.50	10.90	13125
					OFF 267	57.1	42.9	11.91	12.10	11.50	10.90	13126
66	5	1	42	111.1	ON 248	28.4	24.8	11.80	11.95	11.35	10.75	13127
					OFF 256	34.6	26.5	11.85	12.03	11.43	10.83	13128
68	4	1	40	105.8	ON 233	19.9	23.4	11.72	11.74	11.14	10.54	13129
					OFF 244	26.3	24.1	11.78	11.92	11.32	10.72	13130
70	2	1	18	47.6	ON 261	38.3	27.3	11.88	12.06	11.46	10.86	13131
					OFF 263	40.9	28.4	11.89	12.07	11.47	10.87	13132
70	2	2	51	134.9	ON 265	43.0	29.4	11.90	12.08	11.48	10.88	13133
					OFF 268	49.8	33.8	11.92	12.10	11.50	10.90	13134
71	6	0	10	26.5	ON 132	-39.3	27.6	10.90	0.	0.	0.	13135
					OFF 135	-36.7	26.6	10.93	0.	0.	0.	13136
71	9	1	54	142.8	ON 261	63.0	51.6	11.88	12.10	11.50	10.90	13137
					OFF 252	67.4	67.9	11.83	12.10	11.50	10.90	13138
72	5	1	96	253.9	ON 256	33.6	25.4	11.85	12.02	11.42	10.82	13139
					OFF 267	46.8	31.3	11.91	12.10	11.50	10.90	13140
72	5	2	65	171.9	ON 256	65.9	60.3	11.85	12.10	11.50	10.90	13141
					OFF 241	69.2	85.4	11.77	12.10	11.50	10.90	13142
73	7	1	32	84.6	ON 198	61.1	133.0	11.48	12.10	11.50	10.90	13143
					OFF 186	56.2	140.6	11.39	12.10	11.50	10.90	13144
74	1	1	59	156.1	ON 258	64.8	55.5	11.86	12.10	11.50	10.90	13145
					OFF 246	68.8	76.3	11.80	12.10	11.50	10.90	13146
76	1	1	11	29.1	ON 237	20.3	22.5	11.74	11.75	11.15	10.55	13147
					OFF 240	22.1	22.6	11.76	11.81	11.21	10.61	13148
76	3	1	21	55.5	ON 181	54.9	142.7	11.36	12.10	11.50	10.90	13149
					OFF 174	51.1	146.3	11.30	12.10	11.50	10.90	13150
78	5	1	48	127.0	ON 259	63.9	51.6	11.87	12.10	11.50	10.90	13151
					OFF 250	68.0	66.6	11.82	12.10	11.50	10.90	13152
79	5	0	16	42.3	ON 266	57.4	39.5	11.91	12.10	11.50	10.90	13153
					OFF 264	59.3	42.1	11.90	12.10	11.50	10.90	13154



~~SECRET~~

~~SECRET~~

PHOTOGRAPHIC SUMMARY

AFT PAN	CAMERA	NO	119	0.1750	SLIT	W/21	FILTER	4404	FILM				
OPN NO	FRA	FEET	ET	S-EL	S-DIR	EV	FULL	INT	PRI				
PRE-FLT	135	357.1											
1 5 0	12	31.7	ON 320	43.4	40.1	12.17	12.74	12.14	11.54				10040
			OFF 326	45.5	41.8	12.20	12.74	12.14	11.54				10041
2 5 1	25	66.1	ON 288	34.8	34.3	12.02	12.68	12.08	11.48				10042
			OFF 301	38.7	36.5	12.09	12.71	12.11	11.51				10043
3 6 1	4	10.6	ON 314	41.9	38.5	12.15	12.73	12.13	11.53				14001
			OFF 316	42.6	39.1	12.15	12.73	12.13	11.53				14002
3 6 2	21	55.5	ON 323	44.5	40.6	12.19	12.74	12.14	11.54				14003
			OFF 331	47.3	43.2	12.22	12.75	12.15	11.55				14004
4 6 1	5	13.2	ON 316	42.3	38.7	12.16	12.73	12.13	11.53				14005
			OFF 318	43.0	39.2	12.17	12.73	12.13	11.53				14006
4 6 2	19	50.3	ON 346	51.8	48.4	12.29	12.75	12.15	11.55				14007
			OFF 352	53.8	51.7	12.31	12.75	12.15	11.55				14008
5 1 1	259	685.1	ON 266	22.0	26.9	11.91	12.46	11.86	11.26				14009
			OFF 370	57.7	59.8	12.38	12.75	12.15	11.55				14010
5 1 2	18	47.6	ON 352	58.5	118.0	12.31	12.75	12.15	11.55				14011
			OFF 347	56.9	122.3	12.29	12.75	12.15	11.55				14012
5 1 3	14	37.0	ON 341	55.5	125.3	12.27	12.75	12.15	11.55				14013
			OFF 336	54.0	128.3	12.25	12.75	12.15	11.55				14014
6 7 1	3	7.9	ON 293	28.0	30.6	12.05	12.60	12.00	11.40				14015
			OFF 294	28.5	30.8	12.05	12.60	12.00	11.40				14016
6 7 1	5	13.2	ON 340	42.4	38.4	12.26	12.73	12.13	11.53				14017
			OFF 342	43.2	39.0	12.27	12.74	12.14	11.54				14018
6 7 2	22	58.2	ON 351	46.2	41.6	12.31	12.75	12.15	11.55				14019
			OFF 358	48.9	44.4	12.34	12.75	12.15	11.55				14020
6 7 3	23	60.8	ON 371	54.5	52.3	12.39	12.75	12.15	11.55				14021
			OFF 375	56.6	56.8	12.40	12.75	12.15	11.55				14022
6 7 4	49	129.6	ON 381	61.0	71.5	12.43	12.75	12.15	11.55				14023
			OFF 380	62.5	85.6	12.42	12.75	12.15	11.55				14024
7 9 1	17	45.0	ON 346	44.6	40.0	12.29	12.74	12.14	11.54				14025
			OFF 351	46.6	41.8	12.31	12.75	12.15	11.55				14026
7 9 2	20	52.9	ON 357	48.4	43.7	12.33	12.75	12.15	11.55				14027
			OFF 362	50.7	46.3	12.35	12.75	12.15	11.55				14028
7 9 3	49	129.6	ON 371	54.5	52.1	12.39	12.75	12.15	11.55				14029
			OFF 378	58.5	61.4	12.41	12.75	12.15	11.55				14030
7 9 4	46	121.7	ON 380	62.6	86.2	12.42	12.75	12.15	11.55				14031
			OFF 375	62.3	99.1	12.40	12.75	12.15	11.55				14032
8 4 0	9	23.8	ON 172	-29.1	31.5	11.28	0.	0.	0.				14033
			OFF 174	-26.6	30.7	11.30	0.	0.	0.				14034
8 4 1	70	185.1	ON 312	33.4	32.8	12.14	12.66	12.06	11.46				14035
			OFF 347	44.8	40.0	12.29	12.74	12.14	11.54				14036
9 2 1	21	55.5	ON 334	40.2	36.4	12.24	12.72	12.12	11.52				14037
			OFF 342	43.1	38.5	12.27	12.74	12.14	11.54				14038
9 2 2	31	82.0	ON 350	45.8	40.7	12.30	12.75	12.15	11.55				14039
			OFF 360	49.6	44.6	12.34	12.75	12.15	11.55				14040
12 2 1	17	45.0	ON 276	22.1	26.2	11.96	12.46	11.86	11.26				14041
			OFF 287	25.6	28.6	12.02	12.55	11.95	11.35				14042
13 5 1	35	92.6	ON 273	37.2	145.8	11.94	12.70	12.10	11.50				14043
			OFF 256	30.7	148.6	11.85	12.63	12.03	11.43				14044



~~SECRET~~