

14 000708 100

~~TOP SECRET~~  
~~NO FOREIGN DISSEM~~



Li

TECHNICAL PUBLICATION



# PHOTOGRAPHIC EVALUATION REPORT MISSION 1108

WITH SPECIAL STUDY:

SO242 EVALUATION, MISSION 1108

JULY 1970

COPY

79 PAGES



Handle via **TALENT-KEYHOLE** control only

Declassified and Released by the N R C

In Accordance with E. O. 12958

on NOV 26 1997

~~TOP SECRET~~  
~~NO FOREIGN DISSEM~~

GROUP 1 EXCLUDED FROM  
AUTOMATIC DOWNGRADING  
AND DECLASSIFICATION



**WARNING**

This document contains information affecting the national security of the United States within the meaning of the espionage laws U. S. Code Title 18, Sections 793 and 794. The law prohibits its transmission or the revelation of its contents in any manner to an unauthorized person, as well as its use in any manner prejudicial to the safety or interest of the United States or for the benefit of any foreign government to the detriment of the United States. It is to be seen only by personnel especially indoctrinated and authorized to receive information in the designated control channels. Its security must be maintained in accordance with regulations pertaining to ~~TALCENTRO~~ Control System.

Handle Via  
~~Teletype KEYHOLE~~  
Control System Only

~~TOP SECRET RUFF~~

~~NO FOREIGN DISSEM~~

TECHNICAL PUBLICATION

# PHOTOGRAPHIC EVALUATION REPORT

## MISSION 1108

JULY 1970

NATIONAL PHOTOGRAPHIC INTERPRETATION CENTER

~~TOP SECRET RUFF~~

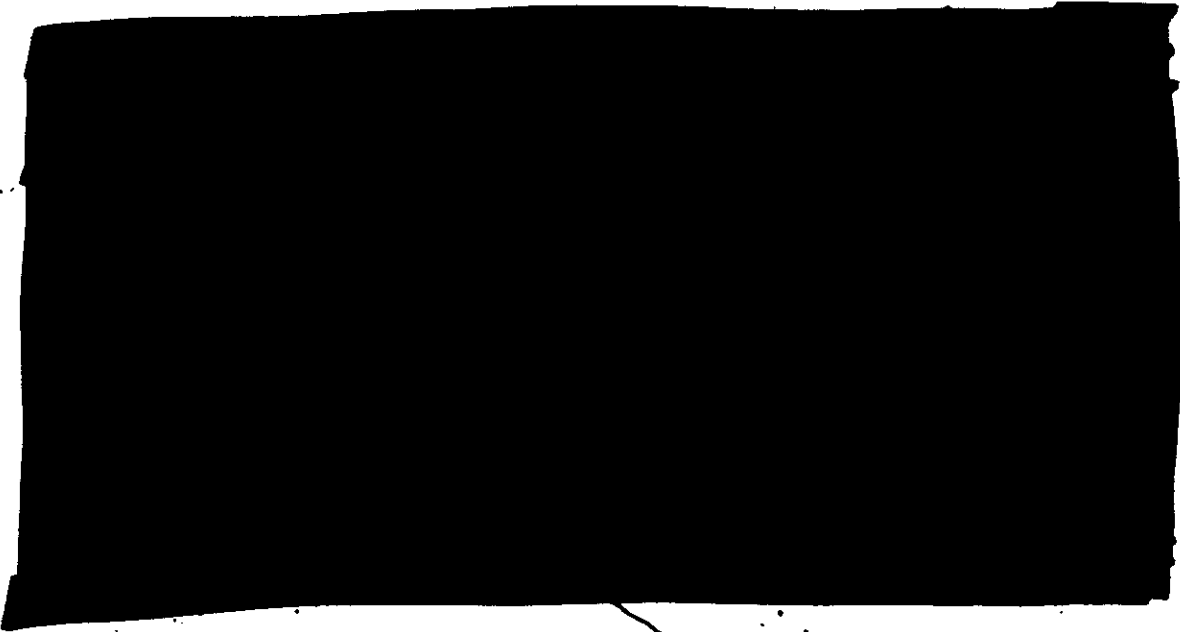
Handle Via  
~~Teletype KEYHOLE~~  
Control System Only

~~TOP SECRET RUFF~~  
Control System Only

~~TOP SECRET RUFF~~  
NO FOREIGN DISSEM

DISTRIBUTION LIST

Number of Copies



~~TOP SECRET RUFF~~  
NO FOREIGN DISSEM

Handle Via  
~~TOP SECRET RUFF~~  
Control System Only



TABLE OF CONTENTS

INDEX OF PHOTOGRAPHIC EVALUATION REPORTS AND SPECIAL STUDIES. . . . . v

GLOSSARY OF TERMS . . . . . vi

SYNOPSIS. . . . . 1

PART I. . GENERAL SYSTEM INFORMATION. . . . . 2

    A. Camera Numbers. . . . . 2

    B. Launch and Recovery Dates . . . . . 2

    C. Orbit Elements. . . . . 2

    D. Photographic Operations . . . . . 3

    E. Film Usage. . . . . 4

PART II. CAMERA OPERATION. . . . . 5

    A. Fwd-Looking Panoramic Camera. . . . . 5

    B. Aft-Looking Panoramic Camera. . . . . 5

    C. Horizon Cameras . . . . . 5

    D. Stellar Cameras . . . . . 5

    E. Index Camera . . . . . 5

PART III. IMAGE ANALYSIS. . . . . 6

    A. Fwd-Looking Panoramic Camera. . . . . 6

    B. Aft-Looking Panoramic Camera. . . . . 7

    C. Stellar Cameras . . . . . 8

    D. Index Camera. . . . . 9

    E. Graphic Display . . . . . 10

PART IV. IMAGED AUXILIARY DATA . . . . . 11

    A. Fwd-Looking Panoramic Camera. . . . . 11

    B. Aft-Looking Panoramic Camera. . . . . 11

    C. Stellar Cameras . . . . . 12

    D. Index Camera. . . . . 12

PART V. MENSURATION QUALITY . . . . . 13



PART VI. FILM PROCESSING . . . . . 14

    A. Processing Machines and Process Gamma . . . . . 14

    B. Processing Techniques . . . . . 14

    C. Film Handling Summary . . . . . 14

    D. Timetable . . . . . 16

PART VII. PE SUITABILITY. . . . . 17

    A. PI Statistics . . . . . 17

    B. PI Comments . . . . . 18

PART VIII. RESOLUTION TARGET DATA. . . . . 19

PART IX. MISSION DATA. . . . . 20

PART X. MISSION INFORMATION POTENTIAL (MIP) HISTORY. . . . . 21

LIST OF ILLUSTRATIONS

Figure 1. Best Image Quality (1108-1). . . . . 22a

Figure 2. Best Image Quality (1108-2). . . . . 22a



1000

INDEX OF PHOTOGRAPHIC EVALUATION REPORTS AND SPECIAL STUDIES

<u>PER</u>	<u>DOCUMENT NUMBER</u>	<u>SPECIAL STUDY</u>
1033	[REDACTED]	None
1034	[REDACTED]	None
1035	[REDACTED]	None
1037	[REDACTED]	None
1038	[REDACTED]	None
1039	[REDACTED]	None
1040	[REDACTED]	None
1041	[REDACTED]	Slant Range Computations Related to Universal Grid Coordinates for the KH4A Camera System
1042	[REDACTED]	None
1043	[REDACTED]	Scan Speed Deviation Analysis of the Forward Camera, Mission 1043
1044	[REDACTED]	Dual Gamma/Viscose Vs Conventional/Spray Processing Analysis (Mission 1044)
1045	[REDACTED]	None
1046	[REDACTED]	SO-230 Vs 3404 Evaluation
1047	[REDACTED]	None
1048	[REDACTED]	None
1049	[REDACTED]	Image Quality Comparison Mission 1102-- Original Negative vs. Dupli- cate Positive
1050	[REDACTED]	None
1051	[REDACTED]	None
1052	[REDACTED]	SO-239 Second Generation Vs Third Generation Negative
1101	[REDACTED]	Slant Range Computations Related to Universal Grid Coordinates for the KH4B Camera System
1102	[REDACTED]	None
1103	[REDACTED]	None
1104	[REDACTED]	Bicolor Evaluation Report SO-180 Evaluation Mission 1104
1105	[REDACTED]	SO-121 Evaluation; SO-180 Supplement
1106	[REDACTED]	None
1107	[REDACTED]	MIP 1100 Series, Effects of Conjugate Imagery Loss: Mission 1107
1108	[REDACTED]	SO242 Evaluation, Mission 1108

GLOSSARY OF TERMS

ALTITUDE	Vertical distance from the vehicle to the Hough Ellipsoid at the time of exposure.
APOGEE	That point in an elliptical orbit of a satellite at which the distance is greatest between the orbiting body and the surface of the Hough Ellipsoid.
BINARY TIME WORD	Binary presentation of the accumulated system time.
DATE OF PHOTOGRAPHY	Day, month and year (GMT) that the photography was acquired.
DISIC	Dual Improved Stellar Index Camera.
ECCENTRICITY	A measure of the deviation of an ellipse from a true circle; expressed by dividing the distance between the foci of the ellipse by the length of its major axis.
EXPOSURE TIME	Time during which a light-sensitive material is subjected to the influence of light, expressed in this text in fractions of a second. Formula: $\text{Exposure time (sec)} = \frac{\text{slit width (in)}}{\text{scan rate (radians per sec)}}$
FIDUCIAL MARK	A standard geometrical reference point imaged within the frame of a photograph. The intersection of the primary fiducial marks usually defines the intersection of the principal ray with the focal plane.
FOCAL LENGTH (CALIBRATED)	Adjusted value of the equivalent focal length. Computed to distribute the effect of lens distortion over the entire field.
FOCAL LENGTH (EQUIVALENT)	Distance measured along the lens axis from the rear nodal point to the plane of best average definition over the entire field. Points other than the rear nodal point may be used but must



be specified for correct interpretation of data.

FOCAL PLANE

Plane perpendicular to the lens axis, in which images of points in the object field of the lens are focused.

FORMAT

The portion of the frame that contains imagery produced by the primary optical system of the camera.

FRAME\*

A single exposure which contains the format and peripheral border information relevant to the format.

GENERATION

Number of reproductive steps by which a negative or positive photographic copy is separated from the original scene, ie., the original negative is generation one, a positive made from the original negative is generation two, etc.

GROUND RESOLUTION\*

The minimum distance (expressed as bar plus space) between two adjacent linear features which can be detected by a photographic system, as determined from standard three bar resolution targets. A target is considered to be resolved when a grouping of three bars can be distinguished as three distinct lines.

HOUGH ELLIPSOID

A reference ellipsoid around the earth having a semi-major axis of 20,925,738.18 feet and a semi-minor axis of 20,855,588.20 feet.

IMAGE MOTION  
COMPENSATION (IMC)

A correction made to compensate for relative image motion at the camera focal plane.

INCLINATION

The angle between the orbital and equatorial planes measured counterclockwise from the equatorial plane to the orbital plane with the ascending node as the vertex.

INTERPRETABILITY  
(PHOTOGRAPHIC)

Suitability of the imagery with respect to answering requirements on a given type of target. Various factors such as halation, uncompensated image motion, poor contrast, incorrect focus,

improper film processing, atmospheric conditions (both natural and manmade), ground resolution, and insufficient natural or artificial lighting of the target affect interpretability. The 3 levels of interpretability are:

Poor (P) - Unsuitable for adequately answering requirements on a given type of target.

Fair (F) - Suitable for answering requirements on a given type of target but with only average detail.

Good (G) - Suitable for answering requirements on a given type of target in considerable detail.

INDEX CAMERA

A framing camera used to record terrain imagery. The product is used for relative orientation and mapping purposes.

LOCAL SUN TIME

Time of day computed from the position of the sun relative to the imaged terrain.

MATERIAL CHANGE DETECTOR (MCD)

A pre-exposed pre-processed film strip (approximately three feet long) that is detected by telemetry when it passes through the panoramic camera. This strip is generally spliced between two different film types to signal the film change.

NODAL TRACE

A continuous line imaged along the major axis of each frame to define the optical axis of the lens relative to any given instant of exposure.

PAN GEOMETRY DOTS

Images of the rail holes associated with the pan geometry calibration of the camera.

PANORAMIC CAMERA

Photographs a partial or complete panorama of the terrain in a transverse direction through a scanning motion of the lens system.

PASS

Photographic portion of an orbital revolution. A prefix "D" indicates the descending node, a prefix "A" indicates the ascending node, and a

~~TOP SECRET RUFF~~

~~NO FOREIGN DISSEM~~

prefix "M" indicates a continuous camera operation from the ascending node through the descending node. An additional suffix "E" indicates that the associated photography was generated for engineering purposes.

PERIGEE That point in an elliptical orbit of a satellite at which its distance is nearest the surface of the Hough Ellipsoid.

PERIOD The time required for a satellite to complete one revolution about the earth.

PITCH Rotation of the camera about its transverse axis. Positive pitch indicates nose up attitude.

PRINCIPAL RAY That ray of light which emanates from a point in object space and passes undeviated through the centers of curvature of the lens surfaces. It is coincident with the optical axis of the lens.

RELATIVE ORIENTATION The determining (analytically or in a photogrammetric instrument) of the position and attitude of one of a pair of overlapping photographs with respect to the other.

RESOLUTION Measure, expressed in lines/mm, of the smallest array of point objects distinguishable as independent point images.

ROLL Rotation of the camera about its longitudinal axis. Positive roll indicates left wing up attitude.

SOLAR ELEVATION The angular distance to the sun measured from a plane tangent to the earth at the intersection of the principal ray of the camera and the earth.

STELLAR CAMERA A framing camera which records stellar images. The product, in conjunction with the product of the Index camera, is used for attitude determination.

UNIVERSAL GRID An X - Y coordinate system used to define image location on photographic formats.

~~TOP SECRET RUFF~~

~~NO FOREIGN DISSEM~~

• VEHICLE GROUND TRACK  
AZIMUTH

Clockwise horizontal angle measured from the longitudinal meridian's intersection of the earth's surface to the vehicle's ground track.

VIGNETTING

Gradual reduction in density of parts of a photographic image due to the stopping of some of the rays entering the lens.

YAW

Rotation of the camera about its vertical axis. Positive yaw represents nose left attitude, as viewed from top of the camera.

\* Defined differently than in the Glossary of NPIC Terminology.

~~TOP SECRET RUFF~~

~~NO FOREIGN DISSEM~~

SYNOPSIS

Mission 1108, a two-part satellite reconnaissance mission, was launched at 2138Z on 4 December 1969. The first capsule was recovered dry during rev 115 at 2355Z on 11 December 1969. The air catch of the second satellite reentry vehicle on rev 277 at 2300Z on 21 December 1969 terminated the mission. A total of 90 photographic passes was acquired by the 18-day mission.

The image quality of the forward-looking camera record is more variable than that of the aft-looking camera. Out of focus imagery (soft spots) and instances of image smear in the scan direction can be detected on the forward-looking camera material. In general, the image quality of the forward-looking camera record is fair, while the image quality of the aft-looking camera product is good. The imagery provided by the forward camera has a "soft" appearance at magnifications of 50X and above; however, the best imagery of the mission was selected from this record. An MIP rating of 105 and one of 100 are assigned to Missions 1108-1 and 1108-2 respectively.

Approximately 85 percent of the mission contains cloud free photography. The Dual Improved Stellar Index Camera failed to operate after frame 73 of pass 204. The mission carried an 811-foot tag end of film type SO-242 (aerial color film) on the aft camera supply. Detailed analysis of this color material is included in this report as a special study.

- 1 -

~~TOP SECRET RUFF~~

~~NO FOREIGN DISSEM~~

PART I. GENERAL SYSTEM INFORMATION

A. Camera Numbers

Forward-Looking Panoramic Camera	317
Aft-Looking Panoramic Camera	316
DISIC Camera	12

B. Launch and Recovery Dates

	(1108-1)	(1108-2)
Launch	4 Dec 69/2138Z	*
Recovery	11 Dec 69/2355Z	21 Dec 69/2300Z
Recovery Rev	115	277

C. Orbit Elements

<u>Element</u>	<u>Actual**</u> 1108-1 (Rev 9)	<u>Actual**</u> 1108-2 (Rev 113)	<u>Photo Range</u>
Period (min)	88.448	88.439	*
Perigee (nm)	82.423	94.969	81.169 (Pass D48)
Apogee (nm)	143.358	134.957	107.073 (Pass D14)
Eccentricity	0.00821	0:00520	*
Inclination (deg)	81.49	81.49	*
Perigee Latitude (Geod.)	27°25' N	34° 17' N	*

\* Not applicable

\*\* This data reflects the orbital elements for only the indicated revolution, not the entire mission segment.

D. Photographic Operations

1. Panoramic Cameras:

<u>Type</u>	<u>1108-1</u>		<u>1108-2</u>		<u>Total</u>	
	<u>Revs</u>	<u>Frames</u>	<u>Revs</u>	<u>Frames</u>	<u>Revs</u>	<u>Frames</u>
Operational						
Fwd	31	2,586	45	2,922	76	5,508
Aft	31	2,591	43	2,796	74	5,387
Operational/Domestic						
Fwd	3	183	1	44	4	227
Aft	3	184	2	70	5	254
Domestic						
Fwd	3	68	6	125	9	193
Aft	3	68	7	128	10	196
Engineering (no imagery)						
Fwd	0	0	1	6	1	6
Aft	0	0	1	6	1	6
TOTALS						
Fwd	37	2,837	53	3,097	90	5,934
Aft	37	2,843	53	3,000	90	5,843

2. Secondary Cameras:

<u>Camera</u>	<u>Frames</u>
Stellar (1108-1)	2,150 Starboard; 2,145 Port
Index (1108-1)	2,156
Stellar (1108-2)	2,013 Starboard; 2,007 Port
Index (1108-2)	2,025

E. Film Usage

<u>Camera</u>	<u>Film Load (Total)</u>	<u>Pre-Flight Footage</u>	<u>Processed ** Footage</u>	<u>Film Type</u>
Fwd-Looking (1108-1)	*16,300	538	8,005	3404
Aft-Looking (1108-1)	*15,200	540	8,018	3404
	800 Recovered with second bucket.			SO-242
Fwd-Looking (1108-2)	NA	NA	8,175	3404
Aft-Looking (1108-2)	NA	NA	7,088	3404
		NA	819	SO-242
Stellar (1108-1)	*2,000	53	637	3401
Stellar (1108-2)	NA	NA	542	3401
Index (1108-1)	*2,200	71	1,019	3400
Index (1108-2)	NA	NA	1,095	3400

\* Total load for both buckets.

\*\* Values include pre-flight footages.

NA - Not applicable.

- 4 - 7



PART II. CAMERA OPERATION

- A. Fwd-Looking Panoramic Camera: Operational throughout.
- B. Aft-Looking Panoramic Camera: Operational throughout.
- C. Horizon Cameras: Operational throughout the mission; however, an extra port horizon image is present with frame 35 of pass D95. It is overlapped to a small extent with the starboard horizon image associated with frame 34 of pass D95. No fiducials are present with this extra horizon. This minor overlap condition does not interfere with normal horizon arc measurement.
- D. Stellar Cameras: Failed to operate after frame 73, pass 204. This failure is apparently associated with a malfunction in the electronics system.
- E. Index Camera: Failed to operate after frame 73, pass 204. This failure is apparently associated with a malfunction in the electronics system.

### PART III. IMAGE ANALYSIS

#### A. Fwd-Looking Panoramic Camera

1. Density: Ranges from thin to heavy.
2. Contrast: Generally medium.
3. Image Quality: Variable. Instances of image smear in the scan direction and severe out-of-focus imagery are apparent intermittently throughout the mission. The image smear appears to be associated with exposure duration (slit width) and is more severe at the takeup end of the format than at the supply end. Image smear is not observable where terrain illumination level permitted the use of narrow exposing slits. The out-of-focus area is located approximately 10 inches from the takeup end of frames 3 and 4 of most passes. The amount of image degradation is directly associated with the length of sit time between passes. On passes with sit times of one revolution, the out-of-focus imagery is less severe and is difficult to detect. At least two revs between operates are necessary for consistent detection.

The cause of these out-of-focus areas is directly associated with small diameter rollers in the extended film path transport assembly and constant tension assembly. Extended inoperative periods tend to impress these rollers into the payload, causing the material to be deformed. This deformation is retained during the photographic scan resulting in out-of-focus imagery at these points.

In general, the imagery provided by this camera has a "soft" appearance at magnifications of 50X and above; however, the best imagery of the mission was selected from this camera record.

#### 4. Imaged Degradations:

##### a. Light Leaks:

(1) A fog pattern is present on the fourth frame from the end of all camera operations. The density of this fog pattern is commensurate with camera sit periods. After a three-rev soak, fog density in the original negative measured 1.1 above base plus fog level. This light leak appears to originate in the camera drum and is imaged on the material at the camera exit roller (see Graphic #1, page 10).

(2) Two minor circular fog patterns are present near the takeup end of the first frame of some passes of the second-bucket material.

b. Static - Traces of dendritic static are present on both film edges intermittently throughout the second-bucket material.

c. Other - See image quality.

5. Physical Degradations:

a. Numerous comet-shaped minus density spots are present intermittently throughout the first part of the mission. This anomaly apparently occurred in film manufacturing since the head/tail orientation of the comets reverse between manufacturing splices.

b. Several very fine, continuous emulsion scratches are present throughout the mission.

c. A minus density line with parallel plus density bands appears intermittently throughout both fwd and aft records of both buckets. These bands generally appear at a bias, are referenced to the film width, and extend across the width of the film. The bands sometimes have a brownish appearance, apparently associated with film manufacturing.

B. Aft-Looking Panoramic Camera

1. Density: Same as the fwd-looking panoramic camera record.

2. Contrast: Same as the fwd-looking panoramic camera record.

3. Image Quality: Although the best imagery of the mission was selected from the fwd-looking camera, the image quality of the aft-looking camera record is less variable. In general, the imagery can be viewed at 50X magnification without the noticeable loss of quality apparent on the fwd-looking record. The overall performance (image quality) of the aft-looking camera is rated as good.

4. Imaged Degradations:

a. Light Leaks - A minor, splash-like fog pattern is present on the first frame of passes acquired on the second bucket after an extended camera sit period (see Graphic #3, page 10).

b. Static - Traces of dendritic static are present on both film edges intermittently throughout the second bucket material.

c. Other - None noted.

5. Physical Degradation:

a. Several fine longitudinal emulsion scratches are present intermittently throughout the second bucket material.

b. See item c Section A5, p 7 (Panoramic Camera Physical Degradations).

c. A heavy diagonal crease with associated emulsion lifts, and plus density marking extends approximately 15 inches into the format on frame 47, pass D199. Imagery in the area of the crease indicates this anomaly occurred after photographic scan and apparently during the defilming and presplice operations.

C. Stellar Cameras

1. Density: The density of the starboard stellar record is generally medium. The density of the port stellar record is also generally medium, but it is somewhat lower in density than the starboard camera record. The density of both the port and starboard records is adequate for the detection of stellar images.

2. Contrast: Adequate for the detection of stellar images.

3. Image Shape: Point-type star images were recorded on both stellar camera records.

4. Images Per Frame:

a. Mission 1108-1 - 6-10 (starboard), 8-15 (port)

b. Mission 1108-2 - 15-25 (starboard), 6-12 (port)

5. Imaged Degradations:

a. Light Leaks - None noted.

b. Static:

(1) Static marks apparently induced by the pressure plate appear in the format of many port frames throughout the mission.

(2) Severe dendritic and corona static traces are present at random throughout the last 50 feet of the first bucket and the entire second bucket stellar record.

c. Other:

(1) A plus density flare-type marking is present in some starboard formats from both mission segments. The marking affects approximately 8 percent of the format area. Star images are present within the flare area. This flare is apparently caused by a minor sunlight reflection during some operations and has not been observed on previous missions.

(2) Several minus density spots which appear to be caused by obstructions on the reseau plate are present on all port and starboard frames throughout the mission.

6. Physical Degradations: The characteristic skew bead roller markings are present on both film edges of the stellar record.

D. Index Camera

1. Density: The density of the index record ranges from thin to heavy with the major portion in the medium-to-heavy category.

2. Contrast: Generally medium.

3. Image Quality: The index photography is generally good and compares favorably with index-photography from previous missions.

4. Imaged Degradations:

a. Light Leaks - None noted.

b. Static - Static traces appearing as wavering plus density lines are present intermittently throughout the second-bucket index record.

c. Other - Several minus density spots apparently caused by obstructions on the reseau plate are present throughout the mission.

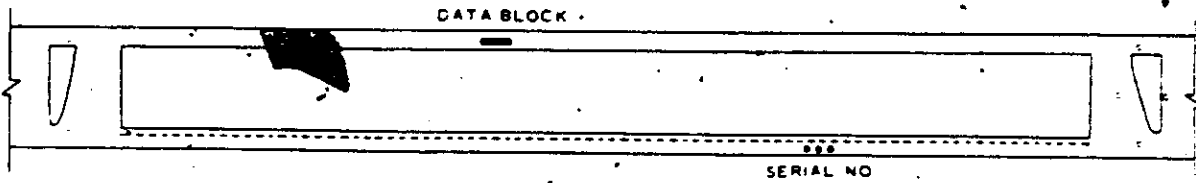
5. Physical Degradations: The characteristic skew bead roller markings are present on both film edges of the index record.



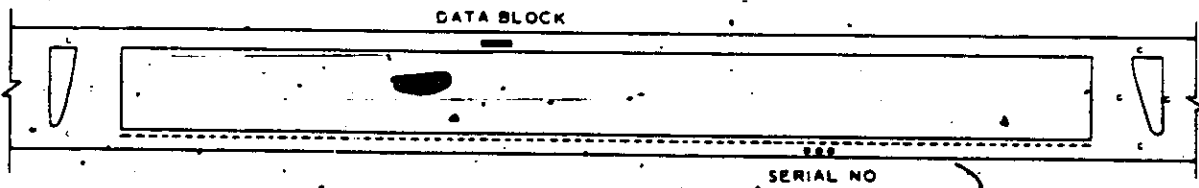
E. Graphic Display

The patterns illustrated below are referenced in the text of this report.

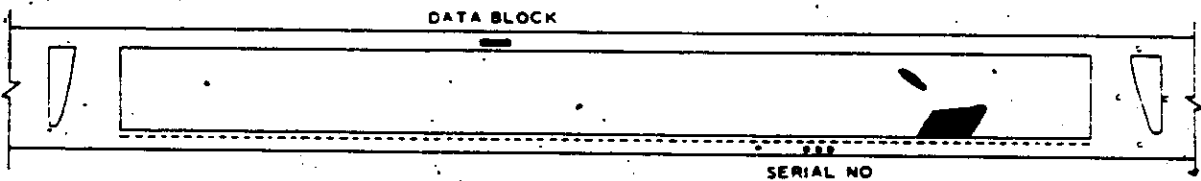
Graphic 1. Fourth frame from end of camera operate (Bucket 1) (fwd)



Graphic 2. Fourth frame from end of camera operate (Bucket 2) (fwd)



Graphic 3. First frame of camera operate (Bucket 2) (aft)



PART IV. IMAGED AUXILIARY DATA

A. Fwd-Looking Panoramic Camera

1. Horizon Cameras:

a. Starboard-Looking:

- (1) Imagery - Imaged properly.
- (2) Fiducials - Sharp and well-defined.

b. Port-Looking:

- (1) Imagery - Imaged properly.
- (2) Fiducials - Sharp and well-defined.

2. Frequency Marks: Imaged properly.

3. Binary Time Word: Sharp and well-defined.

4. Camera Number: Readable.

5. Fan Geometry Dots: Sharp and well-defined.

6. Fan Geometry Traces: Sharp and well-defined.

B. Aft-Looking Panoramic Camera

1. Horizon Cameras:

a. Starboard-Looking:

- (1) Imagery - Imaged properly.
- (2) Fiducials - Sharp and well-defined.

b. Port-Looking:

- (1) Imagery - Imaged properly.
- (2) Fiducials - Sharp and well-defined.

2. Frequency Marks: Imaged properly.

3. Binary Time Word: Approximately 35 percent of the data bits on the aft-looking camera record are bloomed with each data block exposure throughout the mission. The data bits are within size specification; however, no attempt was made to automatically read the time words since the tape recorder data provided all necessary time correlation. The data block is used only if a tape recorder failure occurs.

4. Camera Number: Readable.

5. Fan Geometry Lots: Sharp and well-defined.

6. Fan Geometry Traces: Sharp and well-defined.

C. Stellar Cameras

1. Grid Image Quality: Sharp and well-defined.

2. Binary Time Word: Imaged properly.

3. Lens Serial Number Legibility: Good.

D. Index Camera

1. Grid Image Quality: Sharp and well-defined.

2. Binary Time Word: Imaged properly.

3. Camera Number Legibility: Good.



PART . . MENSURATION QUALITY

The image quality of Mission 1108 is considered good for mensuration purposes. There were 68 requests for mensuration on this mission, No problems were encountered.

PART VI. FILM PROCESSING

A. Processing Machines and Process Gamma

<u>Camera</u>	<u>Machine</u>	<u>Average Gamma</u>	<u>Film Type</u>
Fwd (1108-1)	Yardleigh	1.87	3404
Aft (1108-1)	Yardleigh	1.98	3404
Fwd (1108-2)	Yardleigh	1.86	3404
Aft (1108-2)	Yardleigh	1.92	3404
	Grafton	N/A	SO-242
Stellar (1108-1)	Trenton	2.15	3401
Stellar (1108-2)	Trenton	2.24	3401
Index (1108-1)	Drape	1.79	3400
Index (1108-2)	Drape	1.80	3400

N/A - Not available.

B. Processing Techniques

1. Panoramic Cameras: The black and white portion of both panoramic camera records were processed using the Yardleigh dual gamma process. The color portion was processed in the Grafton machine.

2. Secondary Cameras:

a. Stellar Cameras - The stellar camera records were processed with a Trenton processor at a single level of development.

b. Index Camera - The index camera records were processed with a Drape processor at a single level of development.

C. Film Handling Summary

1. Primary Cameras:

a. Capsule Defilming - The primary camera records were defilmed on the West Coast and received at the processing site in suitcases.

b. Pre-processing Inspection - No major problems were encountered; however, the West Coast labels for the bucket one main camera suitcases caused some confusion. The problem was rectified on the second bucket.



c. Manufacturing Splices:

Fwd-Looking Camera

Pass D39, fr 152  
Pass D71, fr 14  
Pass D151, fr 109  
Pass D176, fr 21  
Pass D216, fr 23

Aft-Looking Camera

Pass D37, fr 73  
Pass D89, fr 85  
Pass D167, fr 98  
Pass D199, fr 52  
Pass D242, fr 27 & 28\*

d. Processing Anomalies - None

e. Breakdown - No problems encountered.

3. Secondary Cameras (Stellar and Index):

a. Capsule Defilming - The secondary camera records were defilmed on the West Coast and received at the processing site in suitcases.

b. Pre-processing Inspection - No problems encountered:

c. Manufacturing Splices - Rev 138, fr 8 on the index camera record only (ultrasonic splice).

d. Processing Anomalies - None

e. S/I Correlation - No problems encountered.

\* Material-change detector splices.



D. Timetable

<u>Film</u>	<u>Recovered</u>	<u>Received at Processing Site</u>	<u>Spec. Shipment at NPIC</u>	<u>Priority 1A at NPIC</u>
Fwd (1108-1)	11 Dec 69/ 2138Z	12 Dec 69/ 1950Z	None	14 Dec 69/ 2100Z
Aft (1108-1)	"	"	"	"
Stellar (1108-1)	"	"	"	"
Index (1108-1)	"	"	"	"
Fwd (1108-2)	21 Dec 69/ 2300Z	22 Dec 69/ 1855Z	"	25 Dec 69/ 0057Z
Aft (1108-2)	"	"	"	"
Stellar (1108-2)	"	"	"	"
Index (1108-2)	"	"	"	"



PART VII. PI SUITABILITY

A. PI Statistics

1. Target Coverage:

	<u>1108-1</u>	<u>1108-2</u>	<u>Total</u>
Priority 1 Targets Programmed	.No specific priority 1 targets were programmed on this mission although specific areas were selected for initial readout.		
Priority 1 Targets Covered	144	177	321

2. Photographic Interpretability Ratings:

<u>Rating</u>	<u>Missiles</u>	<u>Nuclear Energy</u>	<u>Airbase Facili- ties</u>	<u>Ports</u>	<u>Industry</u>	<u>Ground force Facili- ties</u>	<u>Logis- tics</u>	<u>Miscel- laneous</u>
Good	13	7	19	0	2	18	0	6
Fair	65	8	44	15	17	63	13	26
Poor	31	0	18	23	11	17	5	4
TOTALS*	109	15	81	38	30	98	18	36

3. Summary of PI Ratings (percentage):

Good 65 or 15%  
 Fair 251 or 59%  
 Poor 109 or 26%

\* A discrepancy can exist between the total number of targets covered and, the total PI reports because some targets are covered more than once.

B. PI Comments

1. Atmospheric Attenuation: Listed below is the photointerpreters' report of weather conditions for Priority 1 targets covered on this mission.

a. Clear	366	or	86.1%
b. Scattered Clouds	19	or	4.5%
c. Heavy Clouds	4	or	0.9%
d. Haze	34	or	8.0%
e. Cloud Shadow	2	or	0.5%

2. Product Interpretability:

The PI suitability of the black and white record ranges from fair to good. The reduction in scale because of higher-than-normal mission altitude after Pass D40 reduced the effectiveness of this mission. The PI suitability of the color record is poor (see SO-242 Special Study in this report).



PART VIII. RESOLUTION TARGET DATA

There were no Resolution Targets used during this mission.

PART EX. MISSION 1108 DATA

	<u>Forward-Looking</u>			<u>Aft.</u>
	▲ Pan	Takeup Horizon	Supply Horizon	● Pan
Camera Number	317	*	*	316
Reseau Number	*	*	*	*
Lens Serial Number	I-200	23780	23781	I-195
Slit Position/ Slit Widths (in.)	1/0.141 2/0.214 3/0.274 4/0.334 FS/0.237	*	*	1/0.084 2/0.140 3/0.185 4/0.289 FS/0.154
Aperture	*	F/8.0	F/6.3	*
Exposure Time (sec)	Variable	1/100	1/100	Variable
Filter (Wratten) Primary	W-25	W-25	W-25	W-21
Alternate	W-25	*	*	W-2B
Focal Length (mm)	609.752	54.82	55.88	609.638
Film Length (ft)	16,300	*	*	15,200/800
Splices	5	*	*	6
Emulsion	443-1/2-11-9	*	*	444-6-11-9/SO-242-
Film Type	3404	*	*	3404 / SO-242
Resolution Data (L/mm)	- - -	209R/187T	207R/209T	- - -
Static				
High Contrast	292	NA	NA	248
Low Contrast	186	NA	NA	148
Dynamic				
I High Contrast	284	NA	NA	224
I Low Contrast	188	NA	NA	139
P High Contrast	277	NA	NA	239
P Low Contrast	188	NA	NA	132

NA - Not Available.

\* - Not Applicable.

R - Radial Resolution on Axis.

T - Tangential Resolution on Axis.

▲ - Resolution Tested using a W-25 filter.

● - Resolution Tested using a W-21 filter.



EX. MISSION 1108 DATA

By ion	● Pan	<u>Aft-Looking</u>		<u>Stellar</u>		<u>Index</u>
		Takeup Horizon	Supply Horizon	Port	Starboard	
	316	*	*		12	12
	*	*	*	14P	15	109
1	I-195	23773	23776	14P	15	109
	1/0.084					
	2/0.140					
	3/0.185	*	*		*	*
	4/0.289					
	FS/0.154					
3	*	F/6.3	F/8.0	F/2.8	F/2.8	F/6.3
0	Variable	1/100	1/100	1.5	1.5	1/500
	W-21	W-25	W-25	None	None	W-12
	W-2B	*	*	*	*	*
3	609.638	54.93	NA	76.2	76.2	76.2
	15,200/800	*	*	2,000		2,200
	6	*	*	None		1
	444-6-11-9/SQ-242-2>1	*	*	319-6-6-9		202-4-4-9
	3404 / SQ-242	*	*	3401		3400
/209T	- - -	148R/132T	187R/166T	NA	NA	122R/108T
	248	NA	NA	NA	NA	NA
	148	NA	NA	NA	NA	NA
	224	NA	NA	NA	NA	NA
	139	NA	NA	NA	NA	NA
	239	NA	NA	NA	NA	NA
	132	NA	NA	NA	NA	NA

PART X. MISSION INFORMATION POTENTIAL (MIP)  
HISTORY, 1100 SERIES

<u>Mission</u>	<u>MIP#</u>	<u>Pass</u>	<u>Frame</u>	<u>Universal Grid Coord</u>	
1101	85	D159	2 fwd	39.0	1.5
*1102	90	D16	22 fwd	26.8	1.3
1103	90	D79	15 fwd	41.8	3.8
*1104	115	D16	6 fwd	33.1	4.1
*1105	95	D16	20 aft	47.3	1.2
*1106	110	D32	8 fwd	17.9	1.8
1107-1	95	D122	30 aft	43.7	2.4
1107-2	95	D170	20 aft	42.1	2.9
1108-1	105	D30	20 fwd	28.7	0.5
*1108-2	100	D242	20 fwd	33.3	2.3

\* - Standards

FIGURE 1. BEST IMAGE QUALITY  
(MISSION 1106-1)

The following figure is an example of the best imagery from this mission.

FIGURE 2. BEST IMAGE QUALITY  
(MISSION 1108-2)

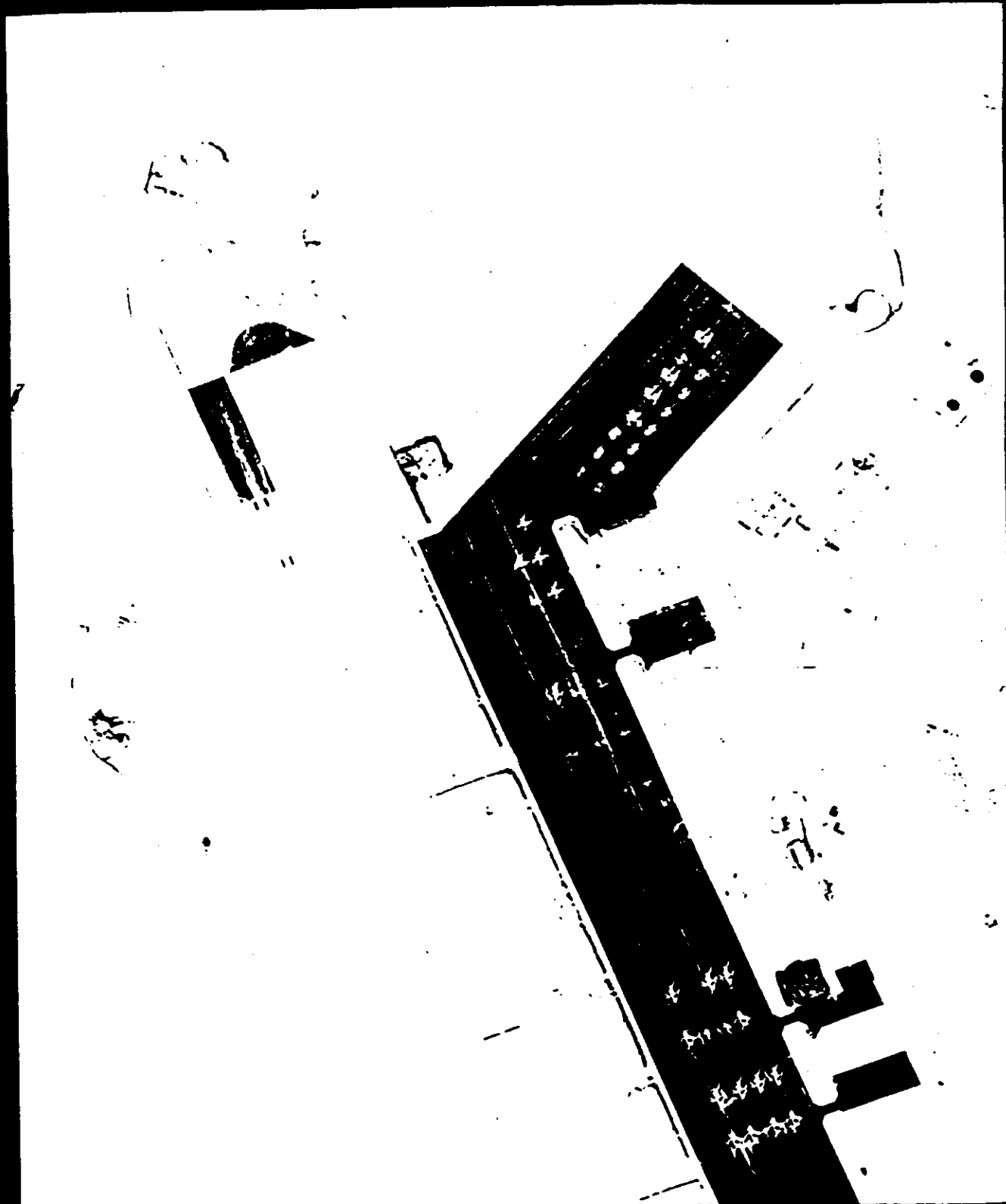
The following figure is an example of the best imagery from this mission.



	Figure 1	Figure 2
Camera.....	317	317
Pass.....	D30	D242
Frame.....	20	20
Date of Photography (GMT).....	6 Dec 69	19 Dec 69
Universal Grid Coordinates (x-y).....	28.7-0.5	33.3-2.3
Enlargement Factor.....	20X	20X
Geographic Coordinates (format center).	43° 11' N 70° 32' W	34° 29' N 112° 23' W
Altitude (ft).....	500,803	606,491
Camera Attitude:		
Pitch (deg).....	16.1399	-15.0000
Roll (deg).....	0.0057	0.0000
Yaw (deg).....	0.5319	0.0000
Local Sun Time.....	1315	1125
Solar Elevation (deg/min).....	21/45	31/46
Exposure (sec).....	1/307	1/292
Filter.....	W/25	W/25
Vehicle Ground Track Azimuth (deg/min).	170/43	172/36
Processing.....	Dual Gamma	Dual Gamma

TOP SECRET - RUFF  
NO FOREIGN DISSEM

Handle Via  
TALIBAN KEYMOLE  
Control System Only

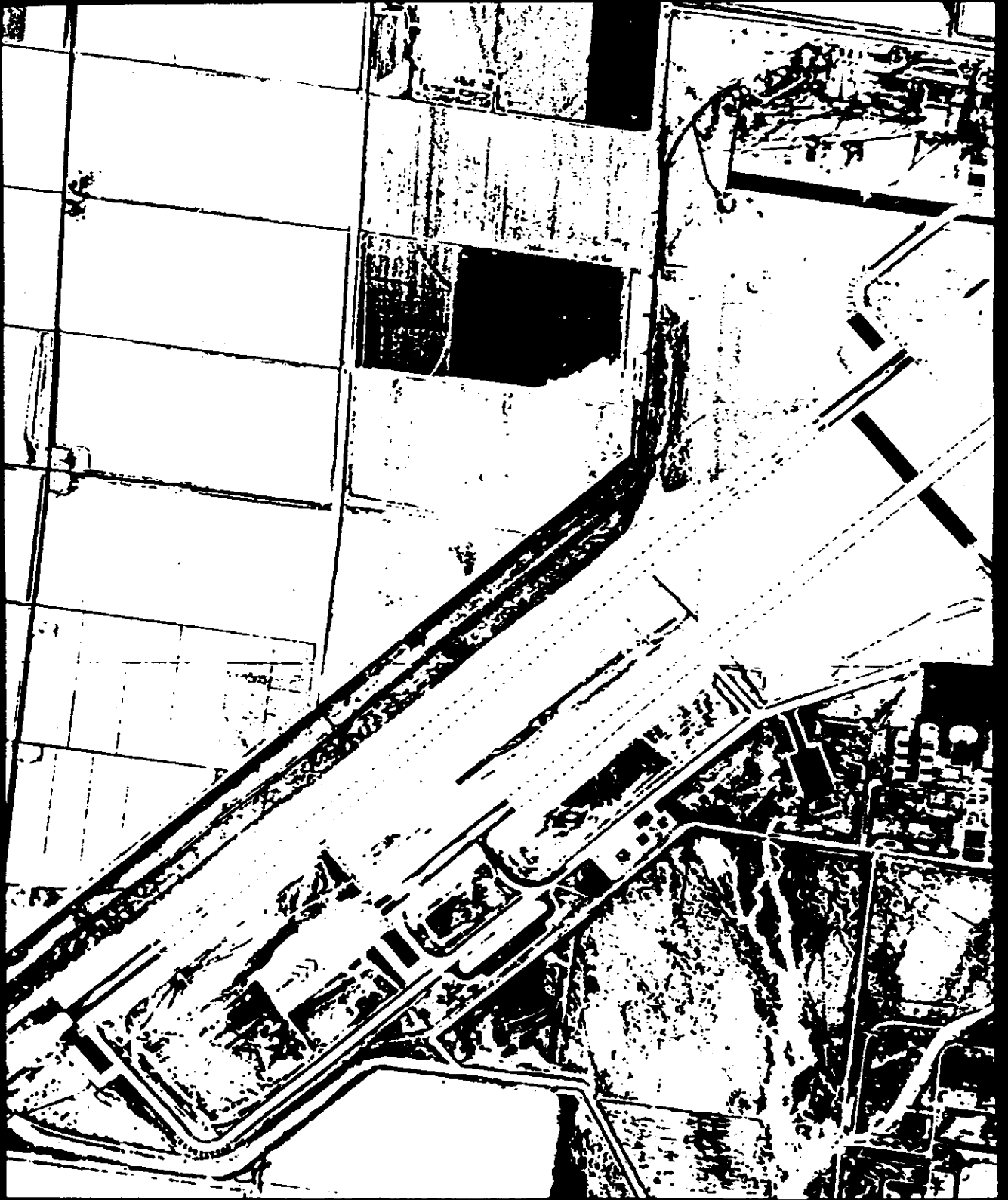


TOP SECRET - RUFF  
NO FOREIGN DISSEM

Handle Via  
TALIBAN KEYMOLE  
Control System Only

TOP SECRET - RUFF

Handle Via  
Talent KEYHOLE  
Control System Only



TOP SECRET - RUFF

Handle Via  
Talent KEYHOLE  
Control System Only



TABLE OF CONTENTS

	Page
I. INTRODUCTION.....	1A
II. EXPERIMENT CHARACTERISTICS AND CONSIDERATIONS.....	2A
A. Mission Profile.....	2A
B. SO-242 Characteristics.....	7A
III. PHOTOINTERPRETATION REPORT.....	16A
A. First Phase Readout Analysis.....	16A
B. Second Phase Readout Analysis.....	18A
C. Third Phase Readout Analysis.....	18A
D. Specific Intelligence Requirement.....	19A
IV. QUALITY ANALYSIS.....	20A
A. Color Quality.....	21A
B. Density.....	21A
C. Color Compared to Black/White.....	21A
D. Color Original Compared to Reproductions.....	22A
V. OBSERVATIONS AND CONCLUSIONS.....	23A
VI. RECOMMENDATIONS.....	24A



GRAPHIC ILLUSTRATIONS

	Page
GRAPHICS 1a AND 2a. SO-242 COLOR COVERAGE PLOTS, MISSION 1108-2 ...	5A; 6A
GRAPHIC 3a. CROSS SECTION OF SO-121 AND SO-242.....	8A
GRAPHIC 4a. MICROTOMES OF SO-121 and SO-242.....	9A
GRAPHIC 5a. FILM/SYSTEM RESOLUTION CAPABILITY.....	11A
GRAPHIC 6a. FILM SENSITIVITY COMPARISON.....	12A
GRAPHIC 7a. SPECTRAL SENSITIVITY OF SO-121 and SO-242.....	13A
GRAPHICS 8a AND 9a. SO-242 PROCESS CONTROL CURVES.....	14A, 15A

PHOTOGRAPHIC ILLUSTRATIONS

FIGURES 1a AND 2a. 3404 AND SO-242 COMPARISON (High Priority Target).....	16Aa
FIGURES 3a AND 4a. COLOR ILLUSTRATIONS (Application to Earth Resource Assessment).....	20Aa
FIGURES 5a AND 6a. 3404 AND SO-242 COMPARISON (Best Quality of Color).....	20Ac
FIGURES 7a AND 8a. 3404 AND SO-242 COMPARISON (General Application).....	22Aa





## I. INTRODUCTION

The goal of this satellite reconnaissance program is to provide the customers with the best possible photographic information base available. Thus far in the program black/white film has served to meet this objective. However, recent advancements in color technology certainly indicate that additional benefits may be realized above and beyond those provided by black/white photography. For example, substantial improvements have been incorporated into the manufacture of SO-242 color film.

The film load of Mission 1105-2 was partially composed of SO-242 color material in addition to the regular black/white film supply. Two reasons for using the color were (a) to investigate the capabilities of SO-242 with respect to this system, and (b) to satisfy a specific intelligence requirement. This report presents some of the technical considerations of the experiment and attempts to clarify the National Photographic Interpretation Center's position from an interpretation standpoint on the utility of color photography in this system.

## II. EXPERIMENTAL CHARACTERISTICS AND CONSIDERATIONS

The following sections present mission coverage data, characteristics of SQ-242, and comparisons of SQ-242 with SQ-121 and 3404 films.

### A. Mission Profile

The last 811 feet (312 frames) of the aft-looking camera film record of Mission 1103 was SQ-242 Ektachrome color film. The SQ-242 was spliced to the end of the type 3404 black/white material. A material/film change device was used to signal the availability of the color material for exposure and a Wratten 2B filter was automatically inserted into the aft-looking camera optical path. The color was exposed during acquisitions from frame 23 of pass D242 through frame 2 of pass D274 (end of mission). Duplicate black/white coverage through frame 13 of pass D265 was provided by the forward-looking camera. Pertinent information pertaining to the color portion of the mission and color coverage plots follows.



COLOR PROFILE DATA

Pass	Frame	Date	Solar Elevation Range (degrees)	Exposure Range (seconds)	Cloud Cover (Percentage)	Area Photographed (Remarks)
D242	26	19 Dec 69	-	-	-	Last black/white frame
	27	"	-	-	-	Mission change detector
D248	28-37	"	32.8 - 33.8	1/450 - 1/451	0	USA
	1-21	20 Dec 69	29.5 - 32.4	1/823 - 1/826	45	China
D249	22-42	"	40.7 - 43.5	1/831 - 1/832	5	China
	1-28	"	23.3 - 27.2	1/814 - 1/819	15	China
	29-51	"	34.9 - 38.0	1/828 - 1/830	30	China, Bhutan
D250	1-21	"	25.4 - 28.3	1/491 - 1/493	25	USSR, Afghanistan
D252	1-22	"	8.6 - 11.7	1/359 - 1/362	50	USSR, Poland
D263	1-17	21 Dec 69	13.2 - 15.4	1/815 - 1/819	25	USSR
D264	1-19	"	24.1 - 26.5	1/513 - 1/515	0	China
D265	1-21	"	24.9 - 27.7	1/500 - 1/502	0	China
D266	1-21	"	24.9 - 27.6	1/500 - 1/502	10	USSR, Pakistan, Afghanistan
D267	1-17	"	6.8 - 9.2	1/367 - 1/369	25	USSR
	18-37	"	15.1 - 17.6	1/371 - 1/373	20	USSR
D268	1-23	"	9.7 - 12.9	1/370 - 1/372	5	USSR, Poland
D273	1-26	"	40.7 - 44.1	1/845 - 1/846	25	USA, Cuba
D274	1-2	"	31.9	1/841	-	USA (end of mission)

Handle Via  
~~Future REFNOLE~~  
Control System Only

~~TOP SECRET RUFF~~

~~NO FOREIGN DISSEM~~

A summary of the Color Profile Data given on the preceding page is presented below:

Passes: 13  
Frames: 312  
Photographic Days: 3  
Solar Elevation Range: 6.8° - 44.1°  
Exposure Range: 1/359 - 1/846 second  
Average Cloud Cover Percentage: 20 percent  
Scale Range: 1/301463 - 1/323062  
Altitude Range: 95.6 - 102.5 mm

- 4A -

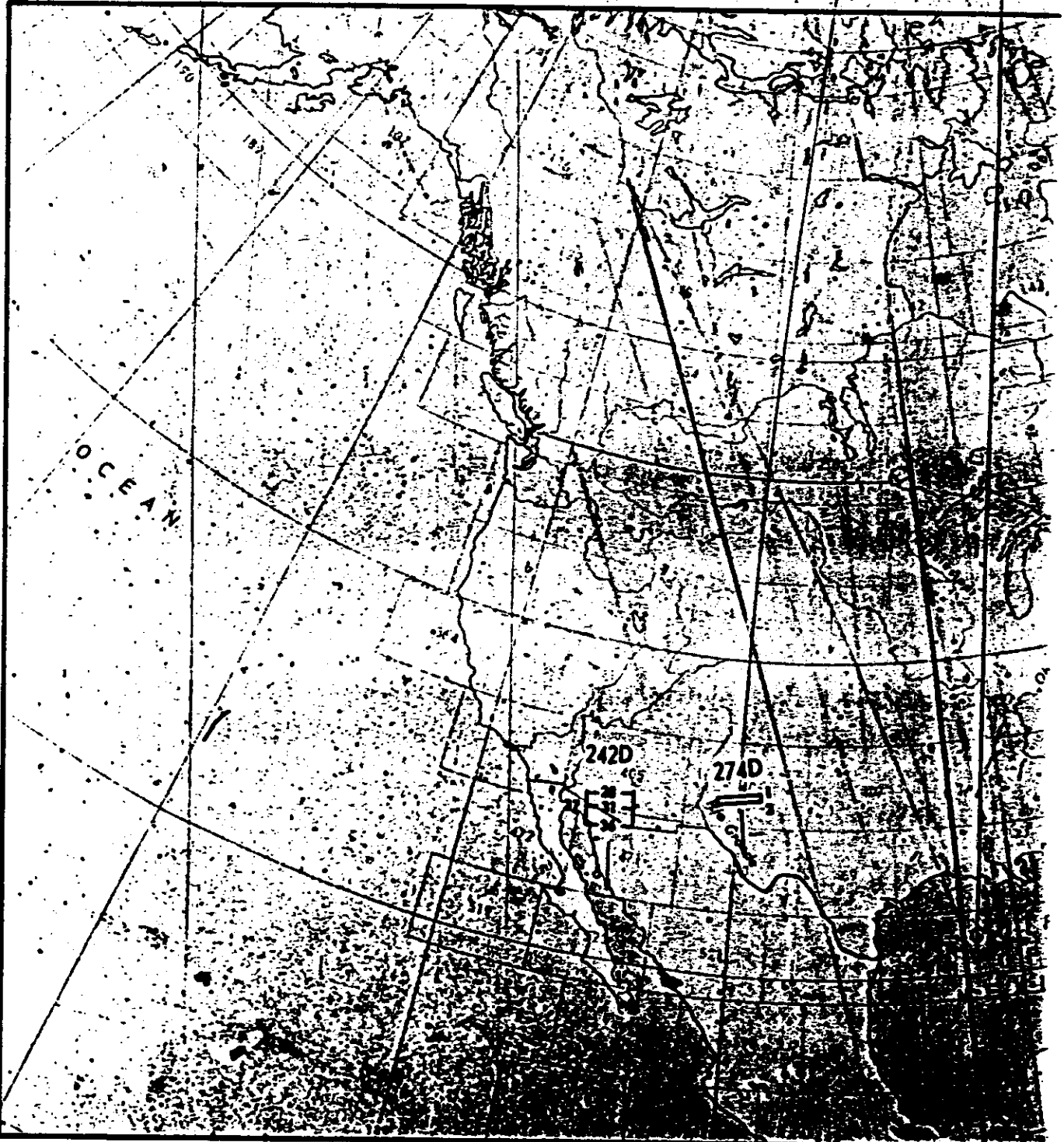
~~TOP SECRET RUFF~~

~~NO FOREIGN DISSEM~~

Handle Via  
~~Future REFNOLE~~  
Control System Only

Handle Via  
~~Polart-KRYNOL~~  
Control System Only

~~TOP SECRET RUFF~~  
~~NO FOREIGN DISSEM~~

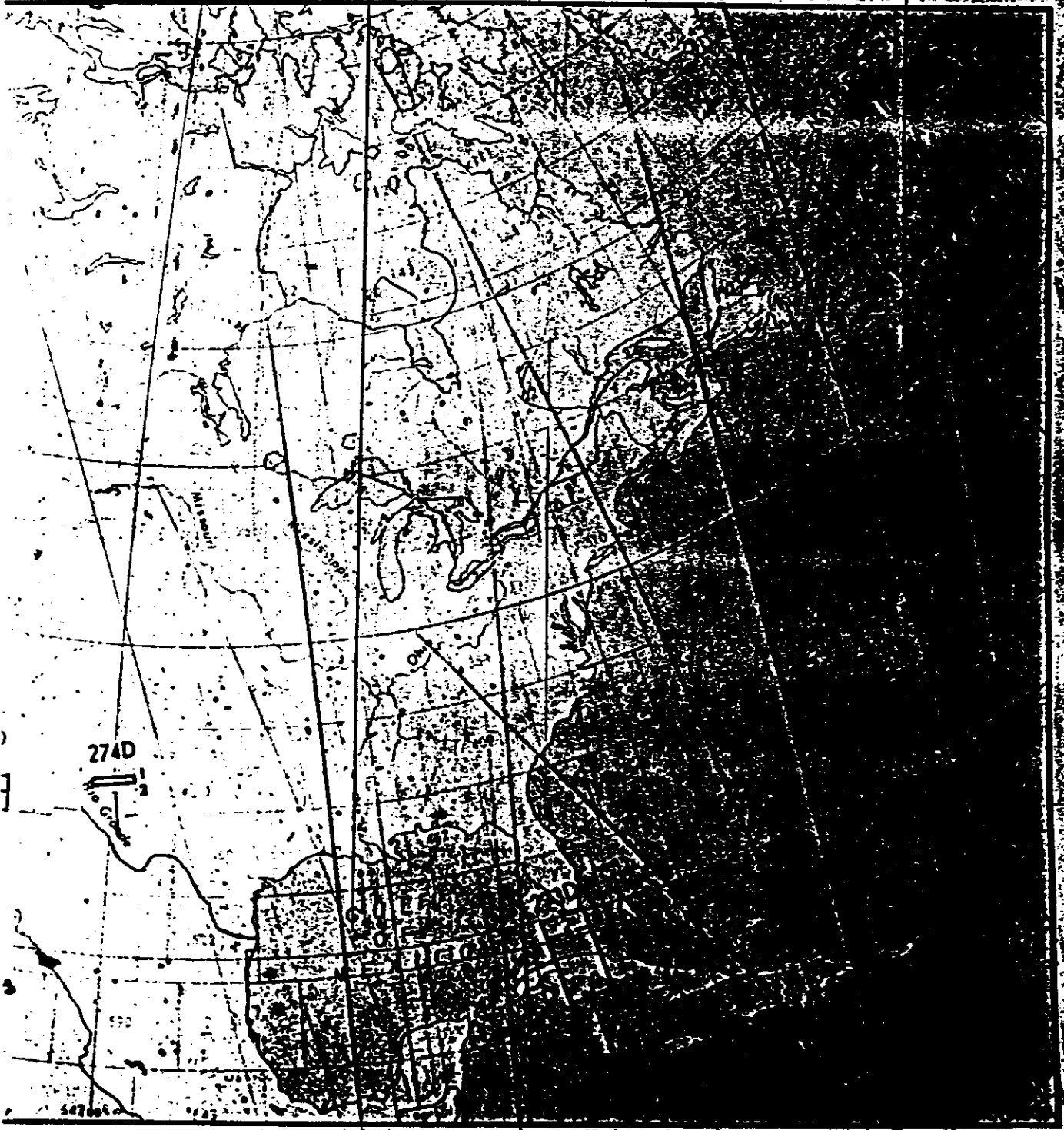


GRAPHIC 2a. SO-242 COLOR COVERAGE PLOTS MIA

TOP SECRET RUFF

~~TOP SECRET RUFF~~

~~NO FOREIGN DISSEM~~



1. SO-242 COLOR COVERAGE PLOTS MISSION 1108-2

- 5A -

~~TOP SECRET RUFF~~

~~NO FOREIGN DISSEM~~

TOP SECRET RUFF  
NO FOREIGN DISSEM