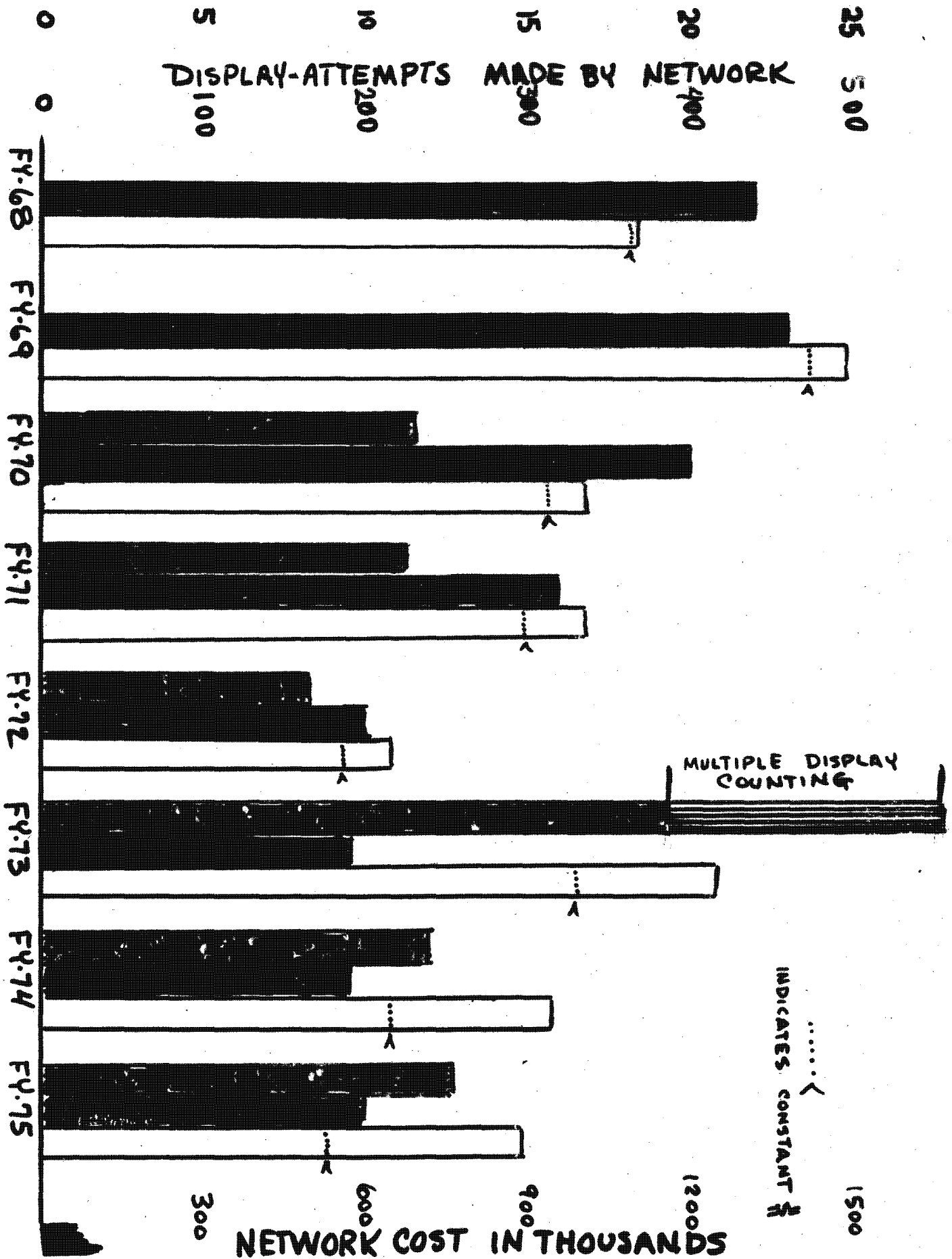


SAFSP

STATUS OF THE
CONTROLLED RANGE NETWORK
(CORN)

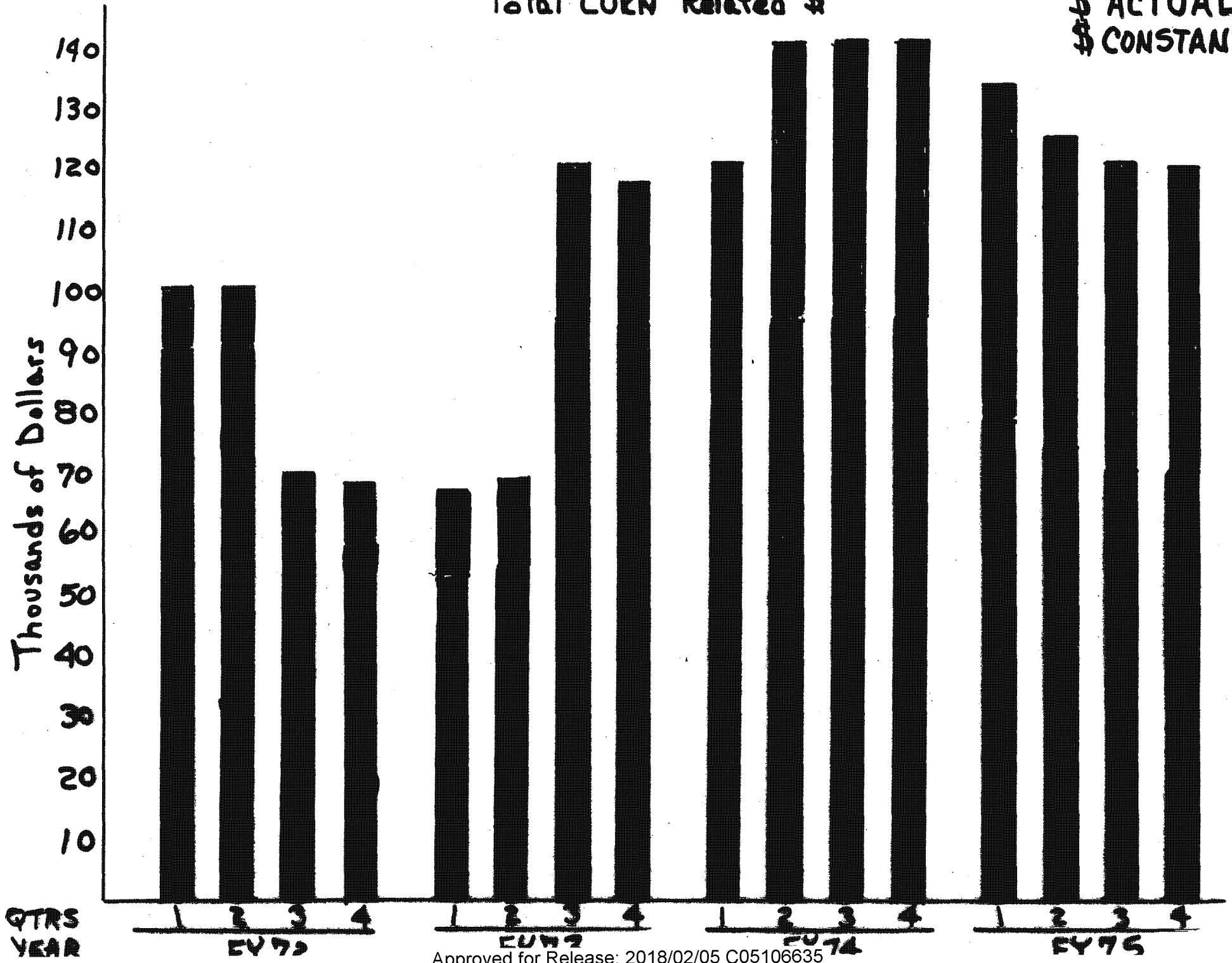
JUNE 1980

MANYEARS ASSIGNED TO NETWORK

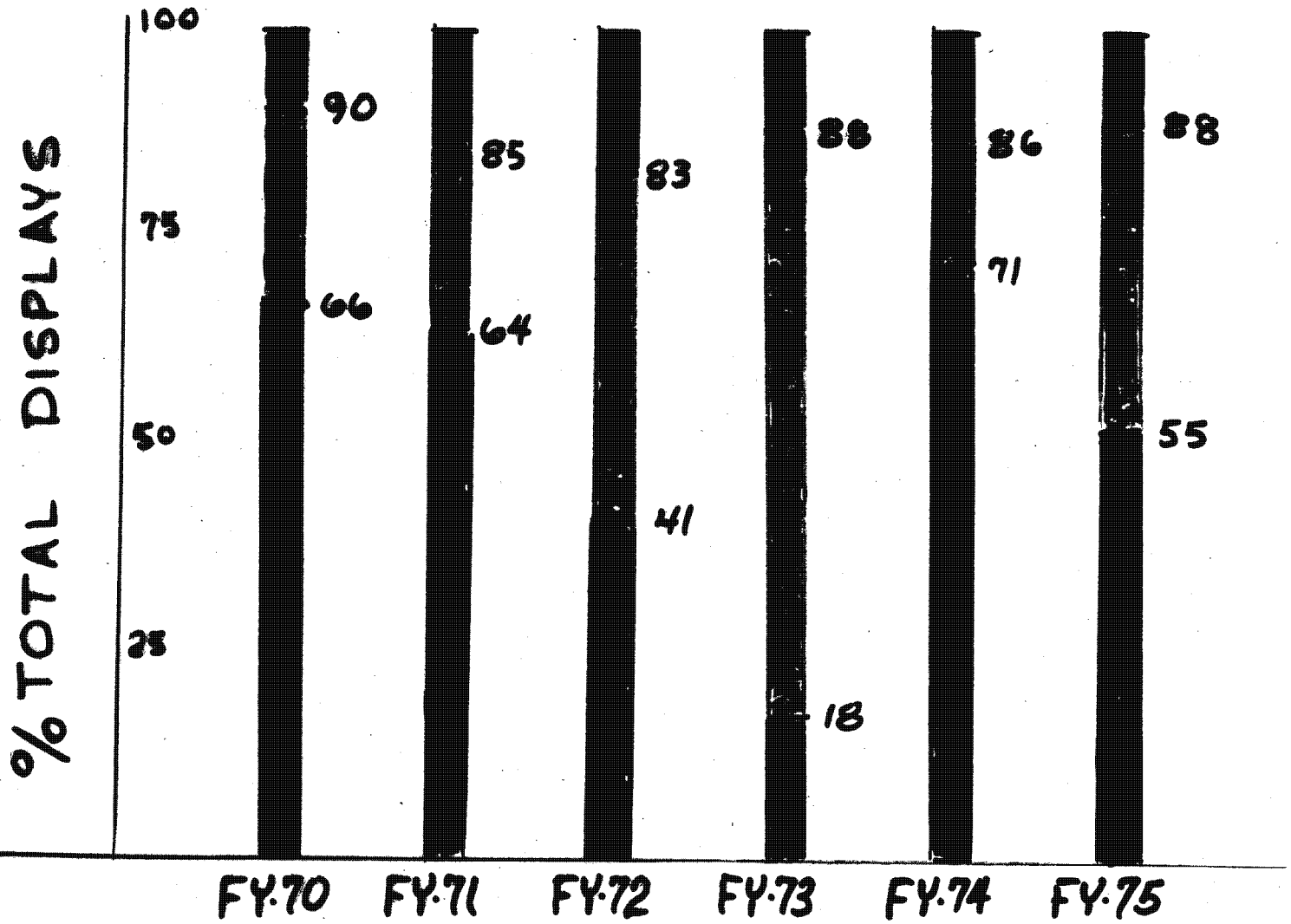


Total CORN Related \$

\$ ACTUAL
\$ CONSTANT



KEY:
S ■
I ■
G ■



BASIC SAFSP POLICY TENETS

- o STRONG MISSION ORIENTATION
- o TOP QUALITY PEOPLE
- o GREAT RESPONSIBILITY/AUTHORITY
- o SHORT CHAIN OF COMMAND
- o TOP PRIORITY FOR RESOURCES
- o SHORT LEAD TIMES
- o RESTRICTED EXTERNAL ACCESS AND REVIEW
- o LIMITED INTERNAL REVIEWS/REPORTING
- o RESTRICTED COMPETITION
- o DIRECT INVOLVEMENT WITH CONTRACTORS
- o STRONG ASSOCIATION BETWEEN MISSION AND SECURITY

~~SECRET~~

HANDLE VIA BYEMAN
CONTROL SYSTEM ONLY

CONTROLLED RANGE NETWORK - CORN

o PERIOD OF PERFORMANCE - 11 JUL 81 - 30 JUN 82

o TOTAL COST - APPROXIMATELY 1.3 MILLION

o SUPPORT FOR

HEXAGON - 29 DISPLAYS

GAMBIT - 77 DISPLAYS

- 16 DISPLAYS

TOTAL - 122 DISPLAYS

o ENGINEERING SUPPORT FOR ALL THREE PROGRAMS

o NAME CHANGE

o HEAD TECHNOLOGY LABORATORIES (MTL)

o MTL SYSTEMS INC.

o NO IMPACT

o PROJECTED DISPLAY UPGRADES

o FY 82 - (\$ 287,000)

o FY 83 - (\$1,015,000)

o FY 84 - (\$ 60,000)

o FY 85 - NONE PLANNED

o FY 86 - (\$ 140,000)

o FY 87 - NONE PLANNED

-SECRET/G/H

HANDLE VIA BYEMAN
CONTROL SYSTEM ONLY

(b)(1)
(b)(3)

(b)(1)
(b)(3)

CONTROLLED RANGE NETWORK - CORN

- o PERIOD OF PERFORMANCE - 11 JUL 81 - 30 JUN 82
- o TOTAL COST - APPROXIMATELY 1.3 MILLION
- o SUPPORT FOR
 - HEXAGON - 29 DISPLAYS
 - GAMBIT - 77 DISPLAYS
 - 16 DISPLAYS
 - TOTAL - 122 DISPLAYS
- o ENGINEERING SUPPORT FOR ALL THREE PROGRAMS
- o NAME CHANGE
 - o MEAD TECHNOLOGY LABORATORIES (MTL)
 - o MTL SYSTEMS INC.
 - o NO IMPACT
- o PROJECTED DISPLAY UPGRADES
 - o FY 82 - (\$ 287,000)
 - o FY 83 - (\$1,015,000)
 - o FY 84 - (\$ 60,000)
 - o FY 85 - NONE PLANNED
 - o FY 86 - (\$ 140,000)
 - o FY 87 - NONE PLANNED

~~SECRET/G/H~~

HANDLE VIA BYEMAN
CONTROL SYSTEM ONLY

(b)(1)
(b)(3)

(b)(1)
(b)(3)

DISPLAY CHANGES

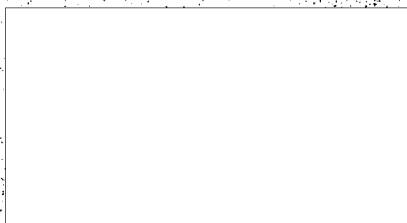
o	FY 82		
	OD-WOOD	(2 @ 6,000)	12,000
	3 STEP GREY	(5 @ 50,000)	250,000
	5-T RESOLUTION	(1 @ 25,000)	<u>25,000</u>
			287,000
o	FY 83		
	5-T RESOLUTION	(5 @ 150,000)	750,000
	10 STEP GREY SCALE	(1 @ 80,000)	80,000
	LOG PERIODIC TARGET	(1 @ 175,000)	175,000
	REFURBISH BIG-X WHITE LINES	(10,000)	<u>10,000</u>
			1,015,000
o	FY 84		
	REPLACE DOUBLE ANNULUS	(60,000)	60,000
o	FY 85		
	NO DISPLAY CHANGE PLANNED		
o	FY 86		
	REPLACE 6-STEP GREY SCALE	(5 @ 28,000)	140,000
o	FY 87		
	NO DISPLAY CHANGES PLANNED		

SECRET/G/H

HANDLE VIA OYEMAN
CONTROL SYSTEM ONLY

(b)(1)
(b)(3)

DUGWAY MENSURATION TARGET



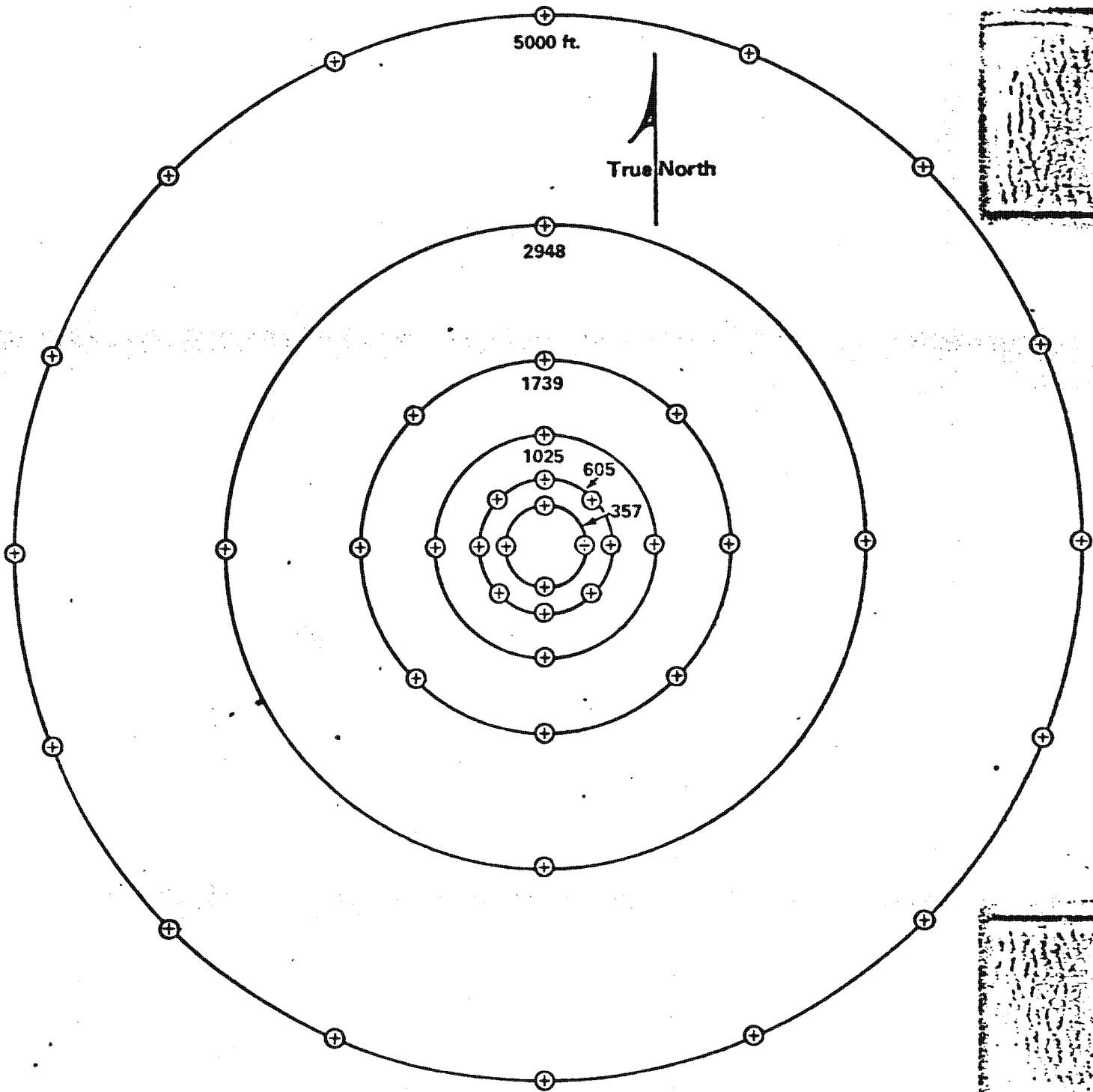
- o **81 TARGETS IN CONCENTRIC CIRCLES**
 - o **DIAMETER OF 2 MILES**
- o **CAPABILITY BUILT IN FOR OTHER DISPLAYS VIA BENCH MARK DESIGN**

~~SECRET/G/H~~ 

~~HANDLE VIA CYEMAN
CONTROL SYSTEM ONLY~~

(b)(1)
(b)(3)

(b)(1)
(b)(3)



~~SECRET~~

Numbers indicate ring radii

HANDLE VIA BYEMAN

Figure 2. Array Layout - Outer Six Rings

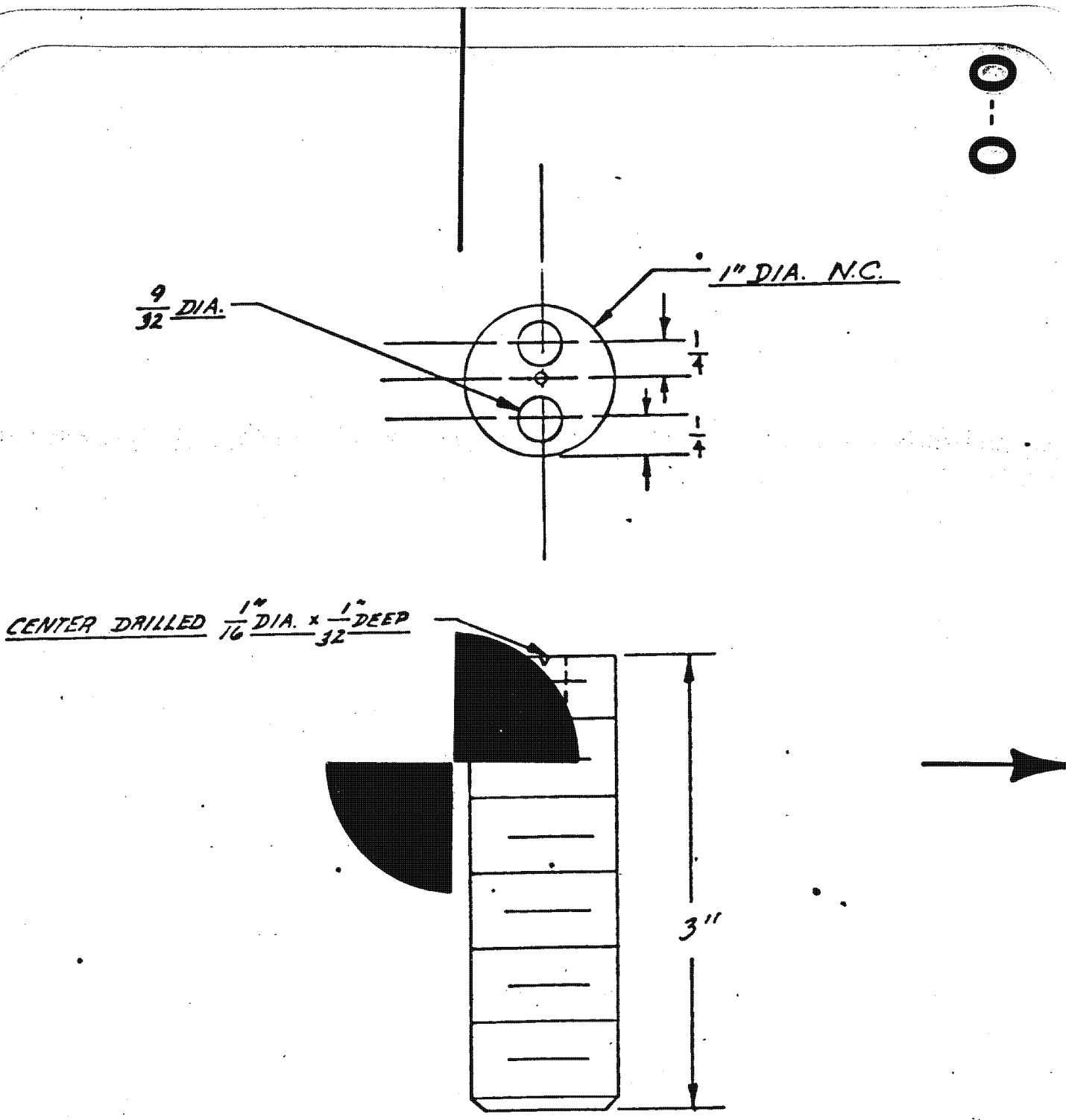
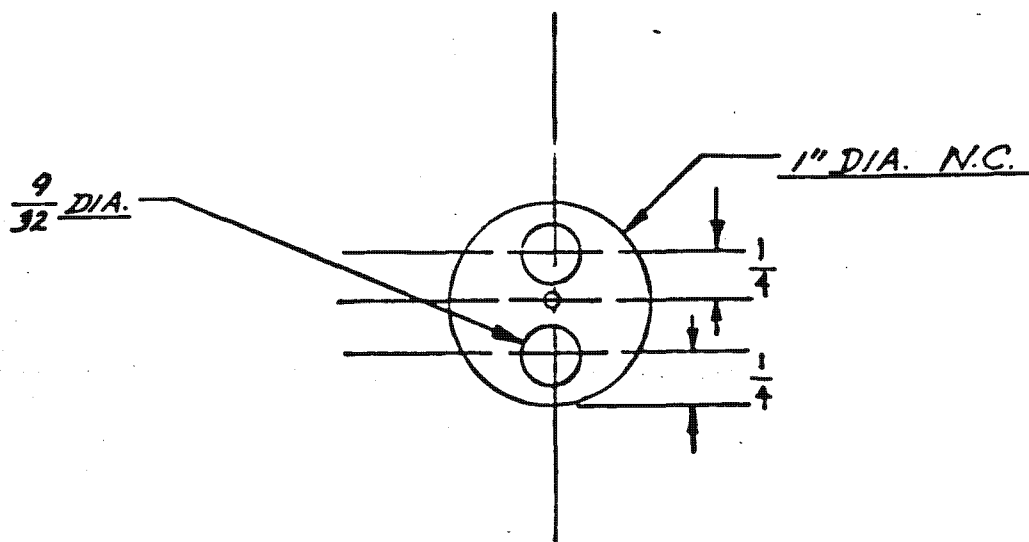


Figure 8 Bench Mark Plug



CENTER DRILLED $\frac{1''}{16} \text{ DIA.} \times \frac{1''}{32} \text{ DEEP}$

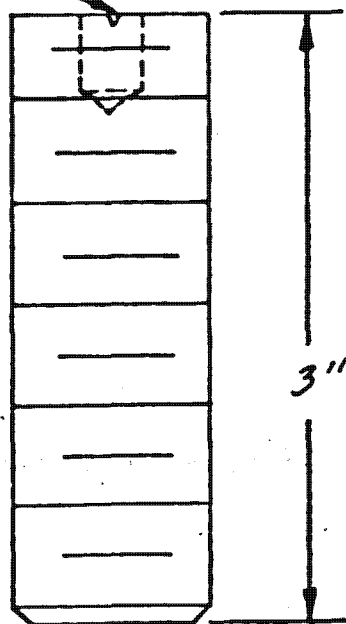



Figure 8 Bench Mark Plug

S A F S P

DUGWAY MENSURATION TARGET

- 
- **81 TARGETS IN CONCENTRIC CIRCLES**
 - **DIAMETER OF 2 MILES**
- **CAPABILITY BUILT IN FOR OTHER DISPLAYS VIA BENCH MARK DESIGN**

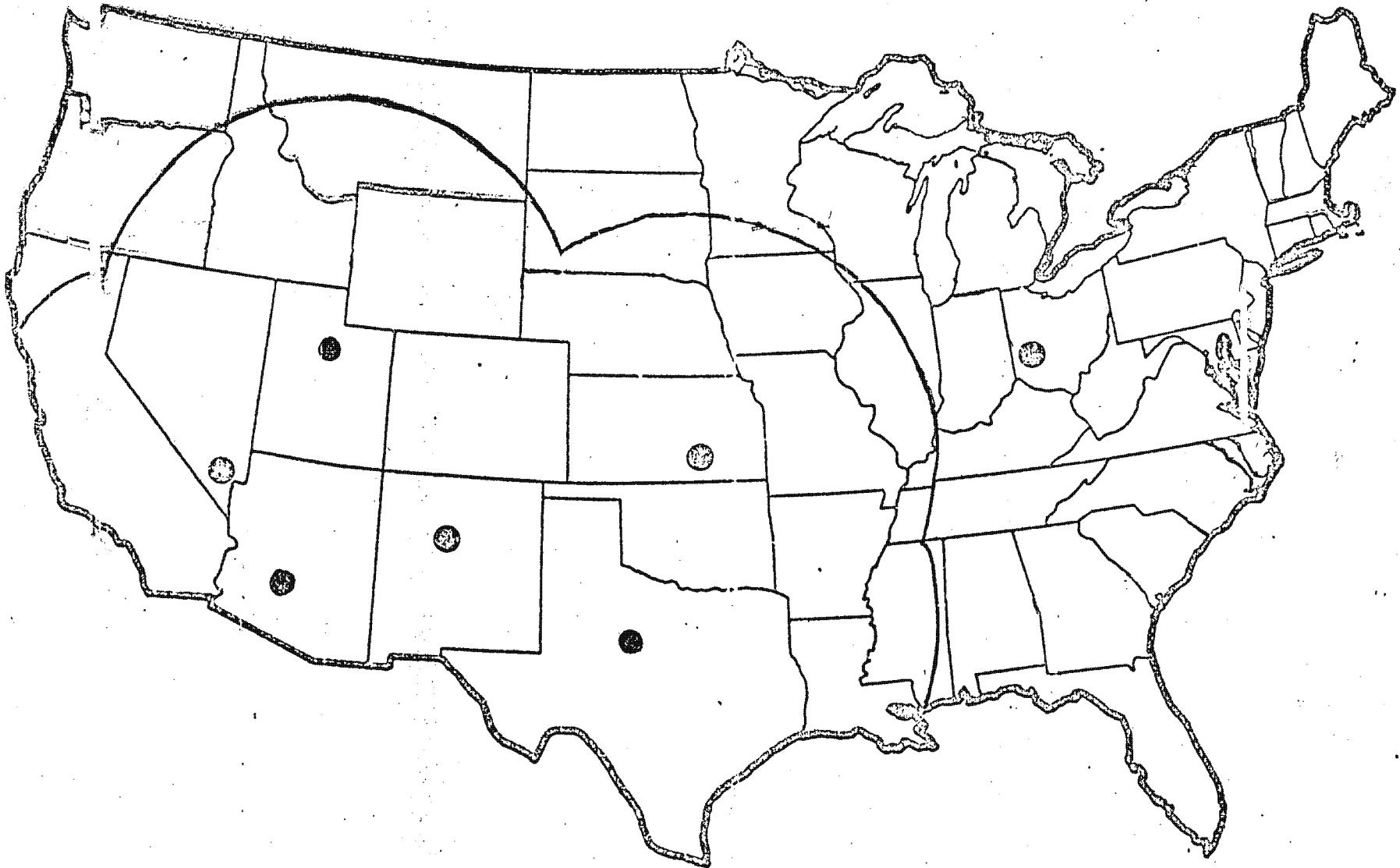
(b)(1)
(b)(3)

==== CORN FUNCTIONS ====

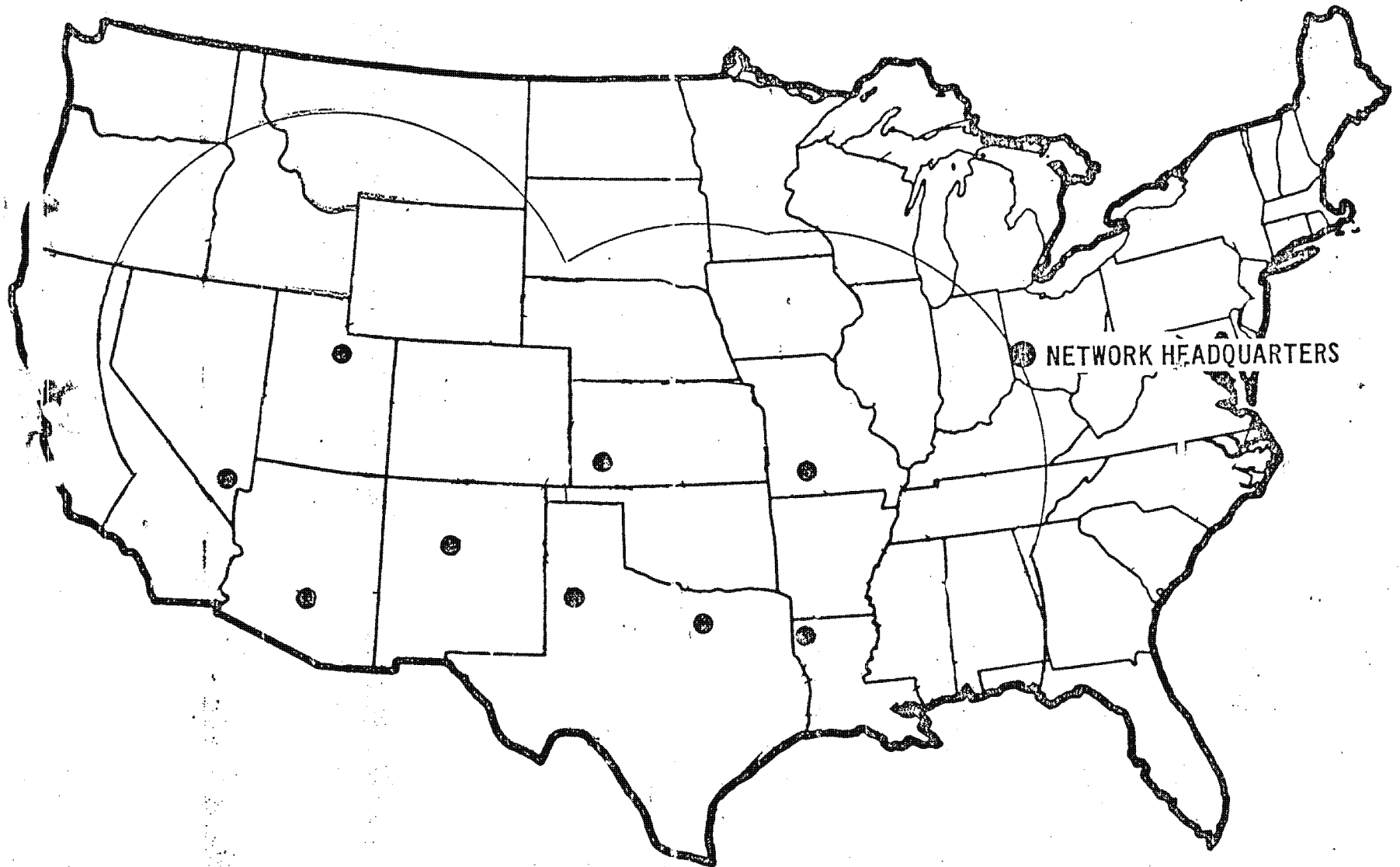
—•— SPECIAL STUDIES

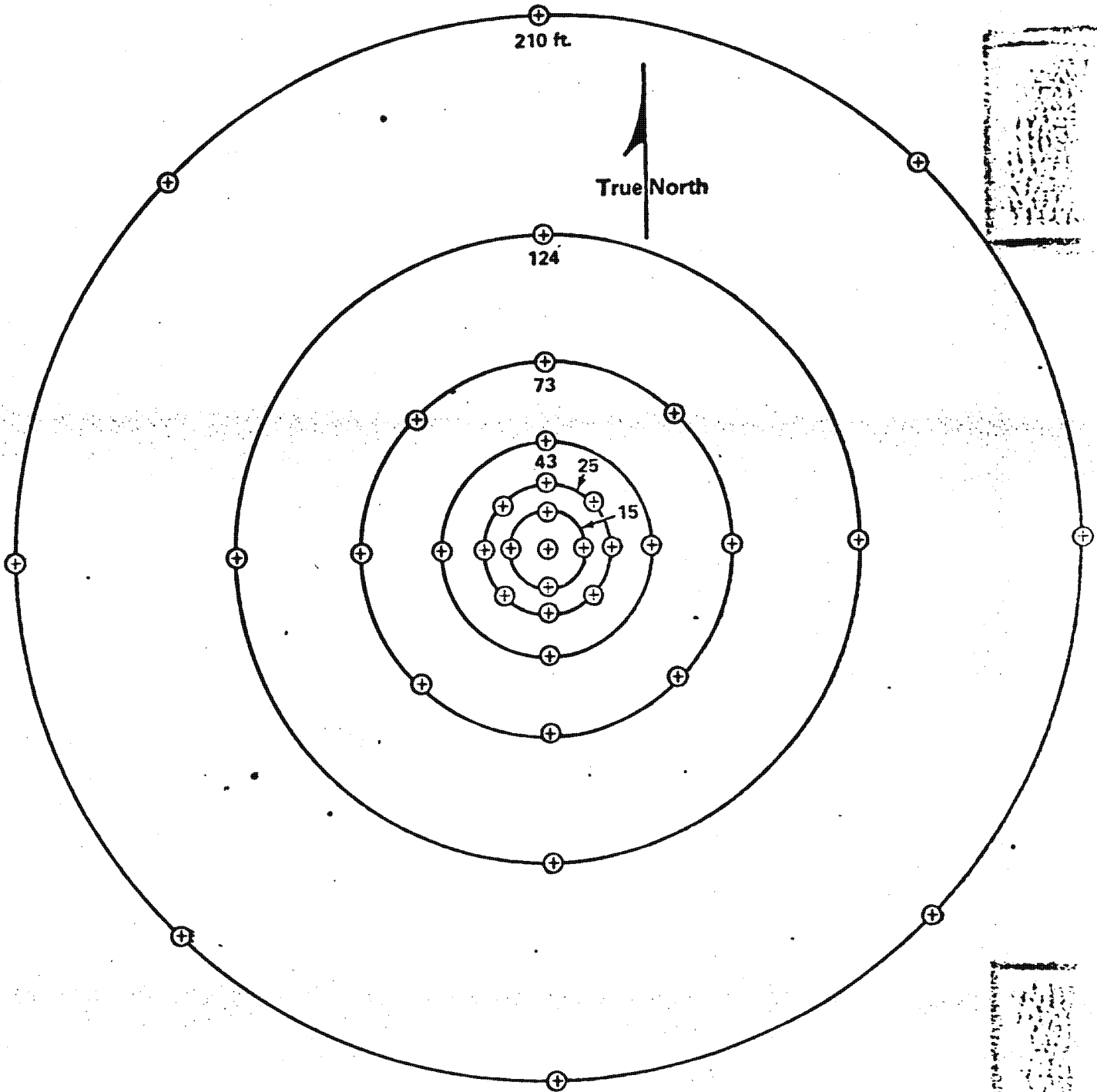
- SCENARIO DEVELOPMENT FOR PROJECT SIERRA
- PROJECT SIERRA FIELD COORDINATION
- CIRRUS CLOUD STUDY EQUIPMENT,
TRAINING & MONITORING
- SPECIAL CCD TARGET
- COORDINATION FOR WHEAT EXPERIMENTS,
NETA, etc FOR RED DOT
- CHALK ORANGE II

24-HOUR DISPLAY COVERAGE



24-HOUR DISPLAY COVERAGE





Numbers indicate ring radii

Figure 2 Array Layout - Inner Six Rings

~~SECRET~~

HANDLE VIA BYEMAN
CONTROL SYSTEM

- SYSTEM ONLY

RE VIA BYEMAN
POL SYSTEM ONLY

~~SECRET~~

BIF-520 W-0229-78
Page 24 of 28
Copy 1 of 2

