

Handle via BYEMAN
Control System

NIC-21E

POPPY

SYSTEM

INFO

Handle via BYEMAN
Control System

~~TOP SECRET - EARPOP~~

Control System

POPPY MISC OP INFO

500 MI ALT

70° ELEVATION

1800 MI RADIUS CIRCLE ON GROUND

104 MINUTES FOR 1 REV (ABT 4NM/SEC)

26° DISPLACEMENT EACH REV (EAST TO WEST)

18 MINUTES (AT DIAMETER) MAX VISIBILITY FOR GND STA.

CIRCLE BECOMES ELLIPSE NEAR EQUATOR

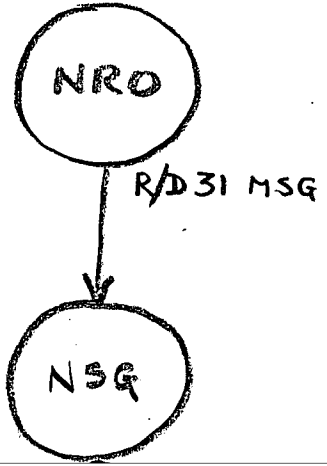
Handle via COMINT

Control System

~~TOP SECRET EARPOP~~

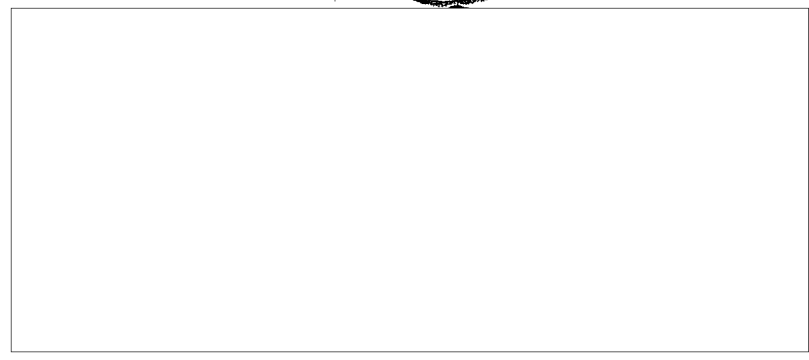
Control System

POPPY TASKING



{ R/D MSG PASSED ON "BYEMAN-LOOP"

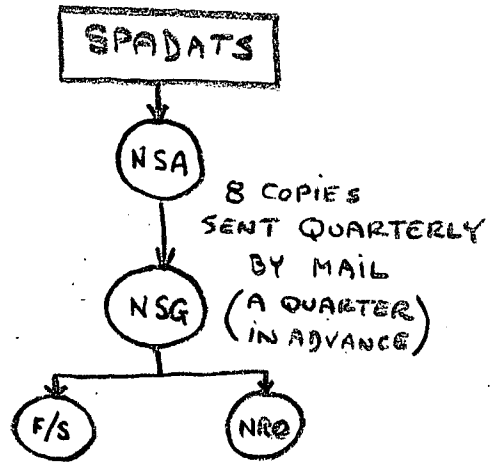
{ MESSAGES TO F/S ARE (POPPY MSGS ON THE REGULAR SPINTCOMM CKTS)



FIELD STATIONS

TASKING ORIGINATES WITH NRO BASED ON USIB-SIGINT COMMITTEE-SORS DIRECTIVES. TASKING MSG (R/D 31) GOES VIA BYEMAN LOOP FROM NRO TO NSG. NSG WORKS UP A TASKING MSG [] FROM THE EPHEMERIS INFO AND THE TASKING CODE LIST. THIS MSG GOES VIA SPINTCOMM CKTS TO F/S — THE EXCEPTION IS THE MSG TO TACKSMAN, IT GOES TO CIA AND IS RELAYED TO TACKSMAN VIA THEIR CKTS. ALL STATIONS CAN REPLY DIRECTLY TO NSG VIA SPINTCOMM CKTS.

TASKING TO A STATION CAN BE FOR INSTRUCTING THE BIRD OR READING OUT THE BIRD — ONLY NAVY STATIONS HAVE EQPT TO INSTRUCT THE BIRD. EPHEMERIS INFO USED IN TASKING



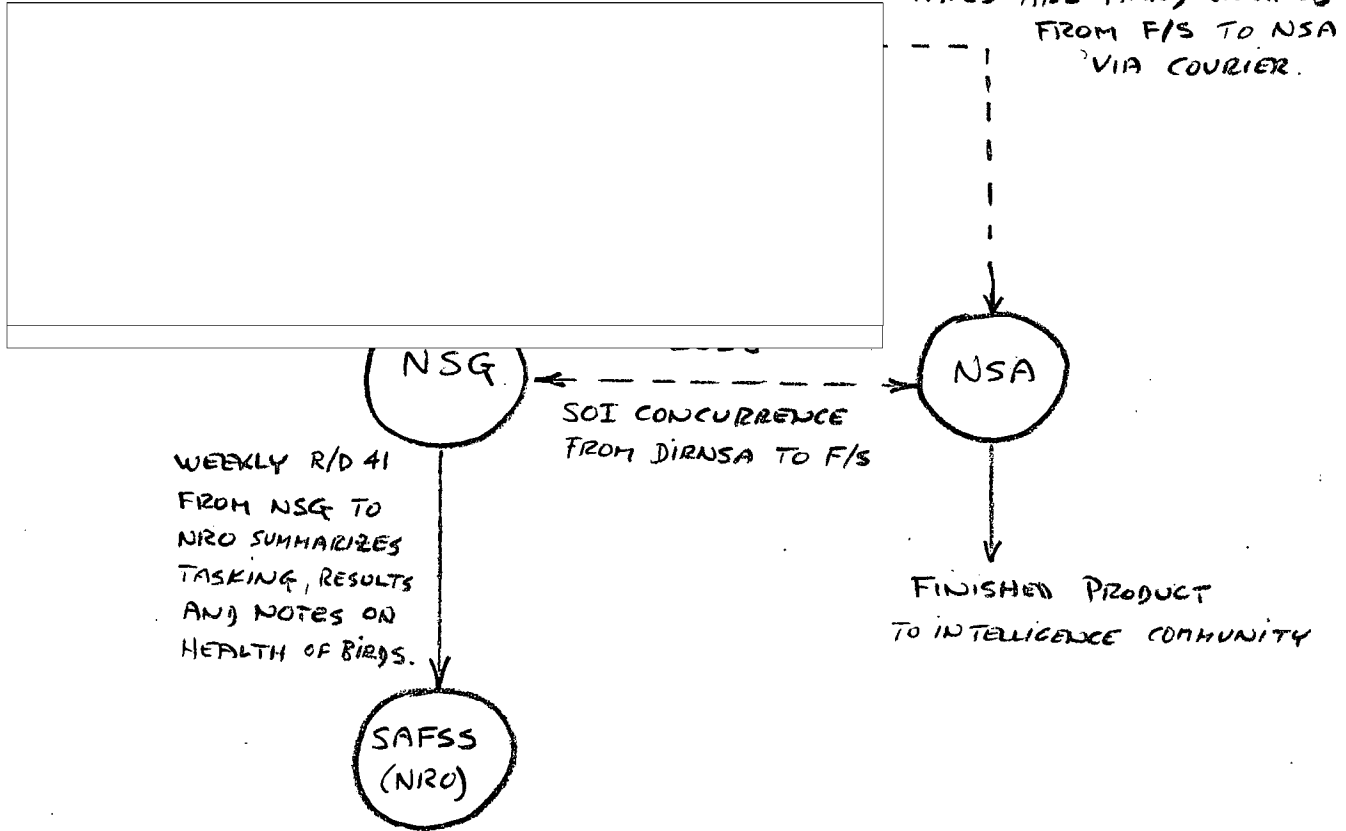
Handle via BYEMAN Control System

~~TOP SECRET~~ ~~EARPOP~~

Handle via BYEMAN
Control System

7-18-68

POPPY READOUT



- F/S ACKNOWLEDGE RECEIPT OF TASKING MSG FROM NSG.
- ONCE A DAY STATIONS REPORT TO NSG INSTRUCTIONS GIVEN TO BIRDS AND THE READOUT
- AT F/S TAPES ARE RUN THRU QUALITY CONTROL (Q.C) AND SIGNALS OF INTEREST (SOI) ARE FLAGGED SO THAT THEY WILL COME TO THE ATTENTION OF NSA.

Handle via BYEMAN
Control System

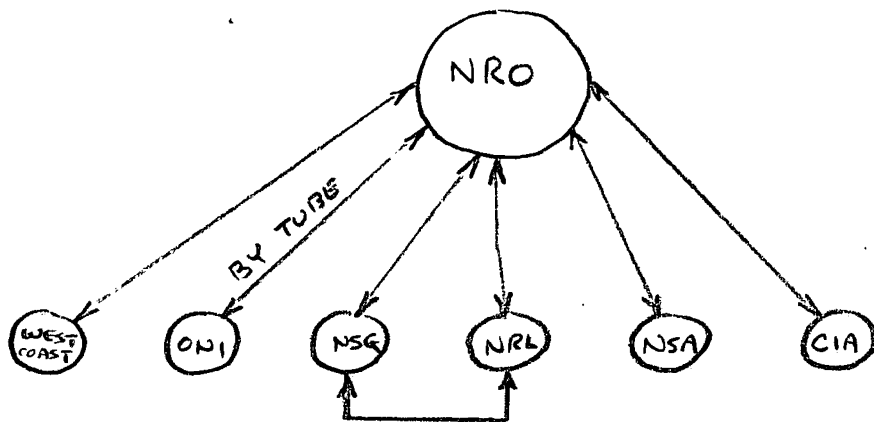
~~TOP SECRET~~ ~~EARPOP~~

~~TOP SECRET~~ ~~EARPOP~~

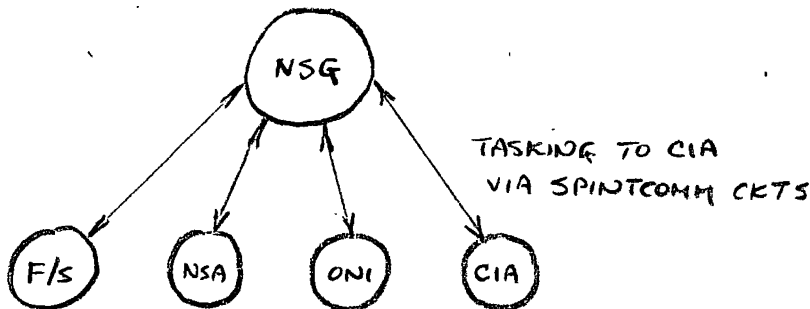
handle via BYEMAN
Control System

POPPY COMM CKTS

BYEMAN TTY LOOP:



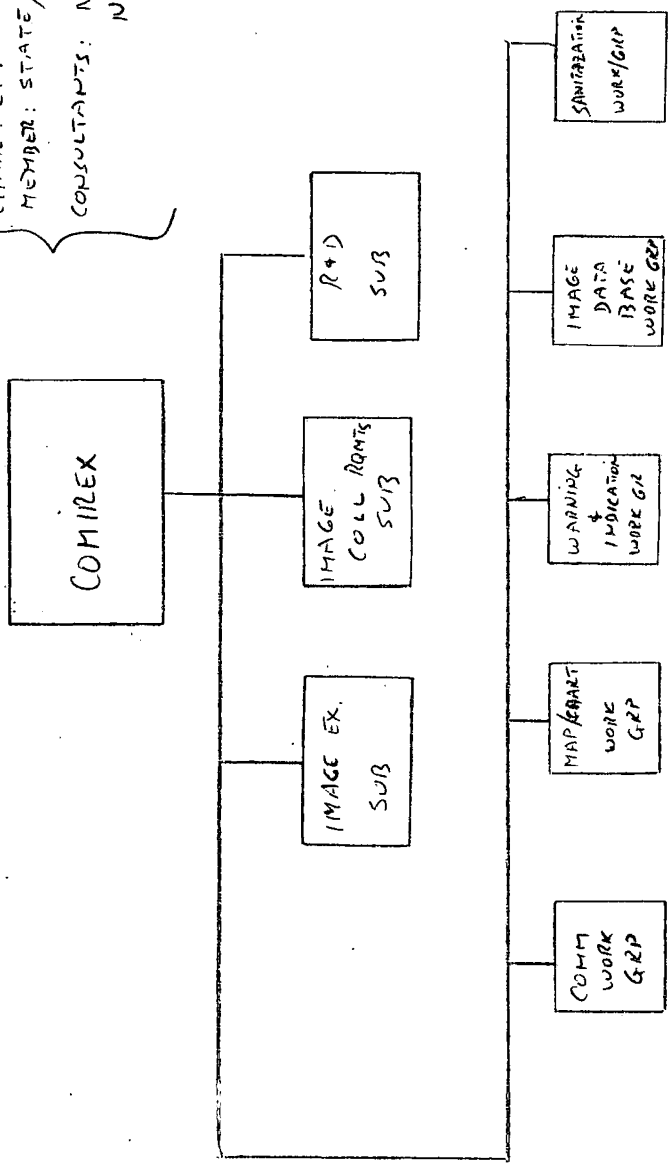
SPINTCOMM:



handle via BYEMAN
Control System

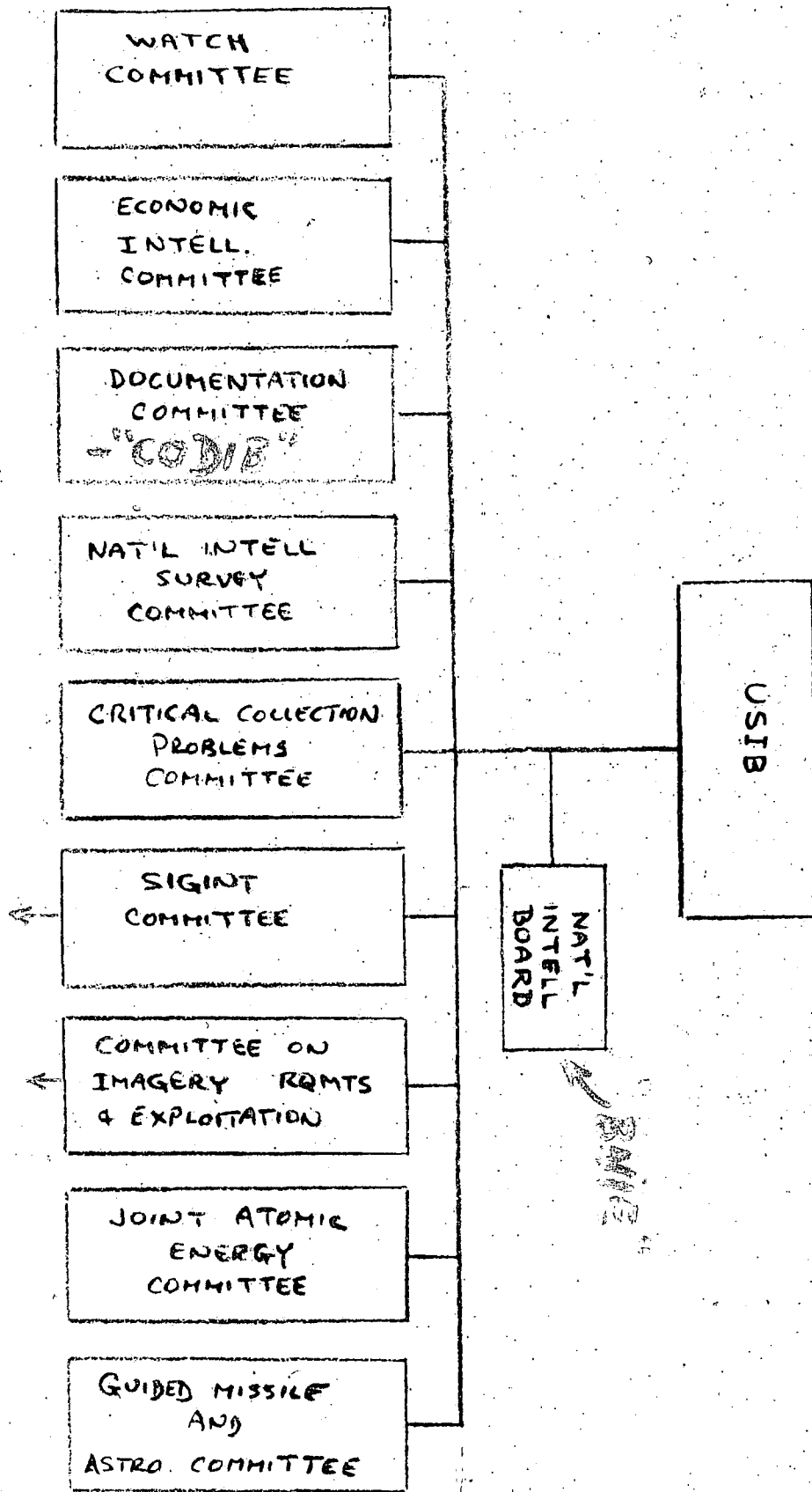
~~TOP SECRET~~ ~~EARPOP~~

CHAIR: CIA
 MEMBER: STATE/DIA/ARMY/NAVY/AF/NS
 CONSULTANTS: NRO
 NPIC



~~TOP SECRET~~
 T/R

~~SECRET~~



USIB

NAT'L
INTELL
BOARD

RAIIE

GUIDED MISSILE
AND
ASTRO. COMMITTEE

SECURITY
COMMITTEE

12-17-68

~~SECRET~~

PROGRAM C ORGANIZATION

NRO DUTIES:

OVERT DUTIES:

RADM F.J. HARLFINGER II, USN

DIRECTOR PROGRAM C.

ASS'T CHIEF OF NAVAL
OPERATIONS (INTELLIGENCE)
AND COMMANDER NAVAL
INTELLIGENCE COMMAND.

CAPT L.W. MOFFIT, USN

|

|

|

|

MANAGER PROGRAM C.

HEAD FOR SYSTEMS
RQMTS AND SUPPORT.

|

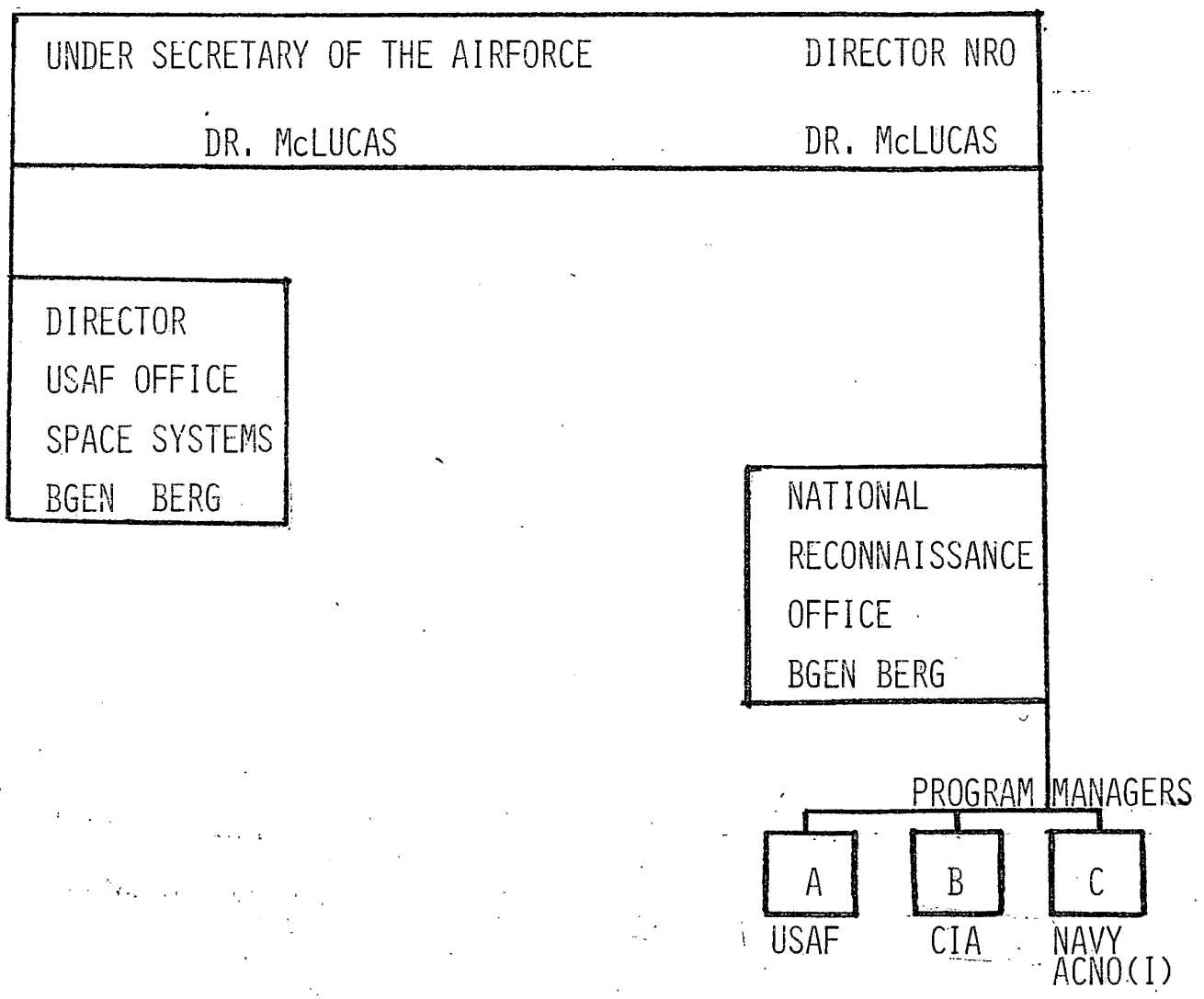
_____, USN

|

ASS'T TO
MANAGER.

HEAD SPECIAL
OPERATIONS DIVISION

~~TOP SECRET EARPOP~~ HANDLE VIA BYEMAN CONTROL SYSTEM



TOP SECRET - ~~EARRPOP~~ - HANDLE VIA BYEMAN CHANNELS

POPPY

- TRIPPO USAF
ABM/AES
- SOUSPO USAF
ABM/AES
- TOPHAT USAF
COMM

- SAVANT — telemetry
- MULTIGROUP
- THRESHOLD — tech intell
- FACADE
- REAPER — tech intell/EUR
- TIVOLI — ABM/AES

- U.S.N.
- USAF
- U.S.A.F.
- USAF
- U.S.A.F.
- USAF
- U.S.A.F.

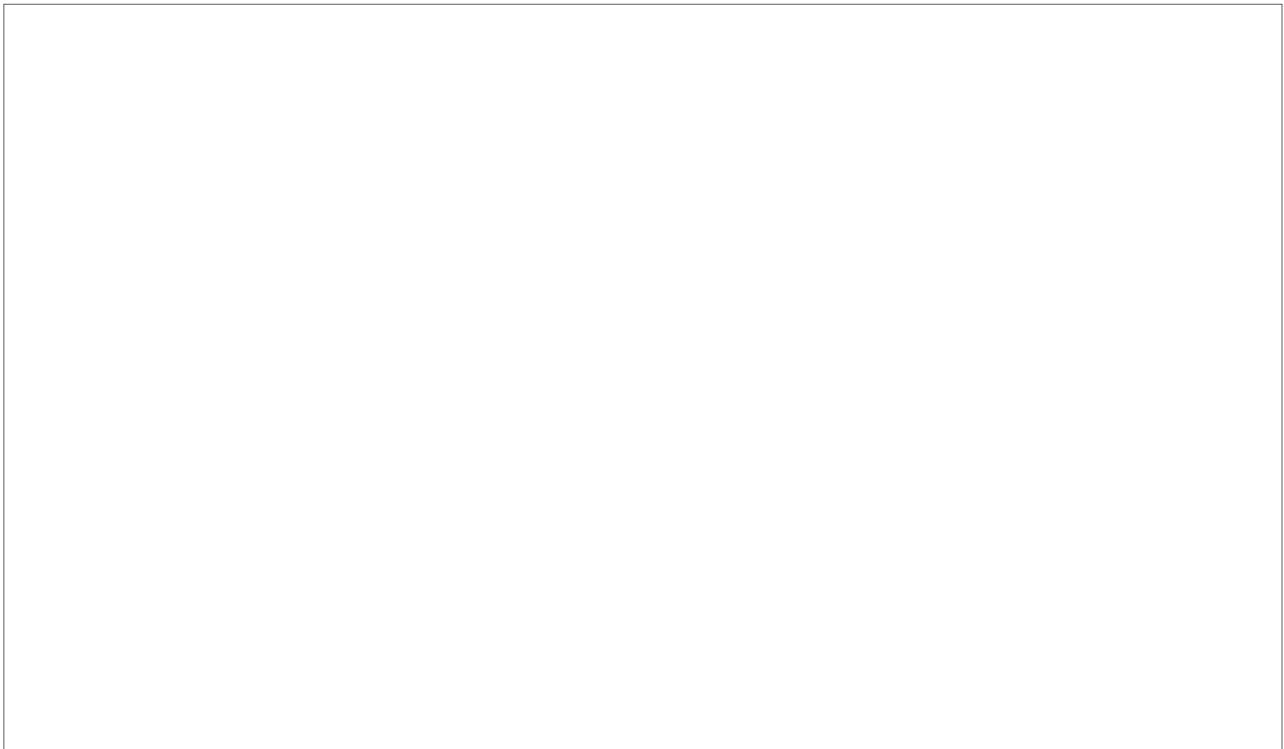
[Redacted]

- LAMPAN — ABM/AES
- SAMPAN — SEARCH
- STRAWMAN
- WESTON — COMM

- U.S.A.F.
- USAF
- U.S.A.F.
- USAF

[Redacted]

OTHER
N.I.R.O.
ELINT
SATELLITE
PROGRAMS



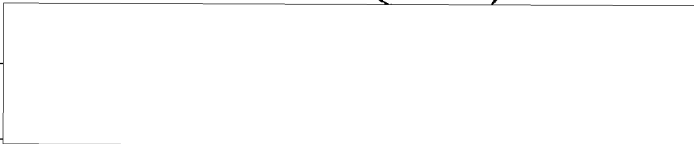
I - IDEALIST (U2)

* C - KH4

E -

* G KH8

D - DORIAN (MOL) PHOTO



* H - KH-9

SPECIAL CLEARANCES

CURRENT: GAMBIT KH8 Hi RESOLUTION

CORONA KH4 SEARCH

1971 TIME

FRAME: HEXAGON KH-9 SEARCH
(290 MILE SWATH,
2-9' RESOLUTION).

8-12-69

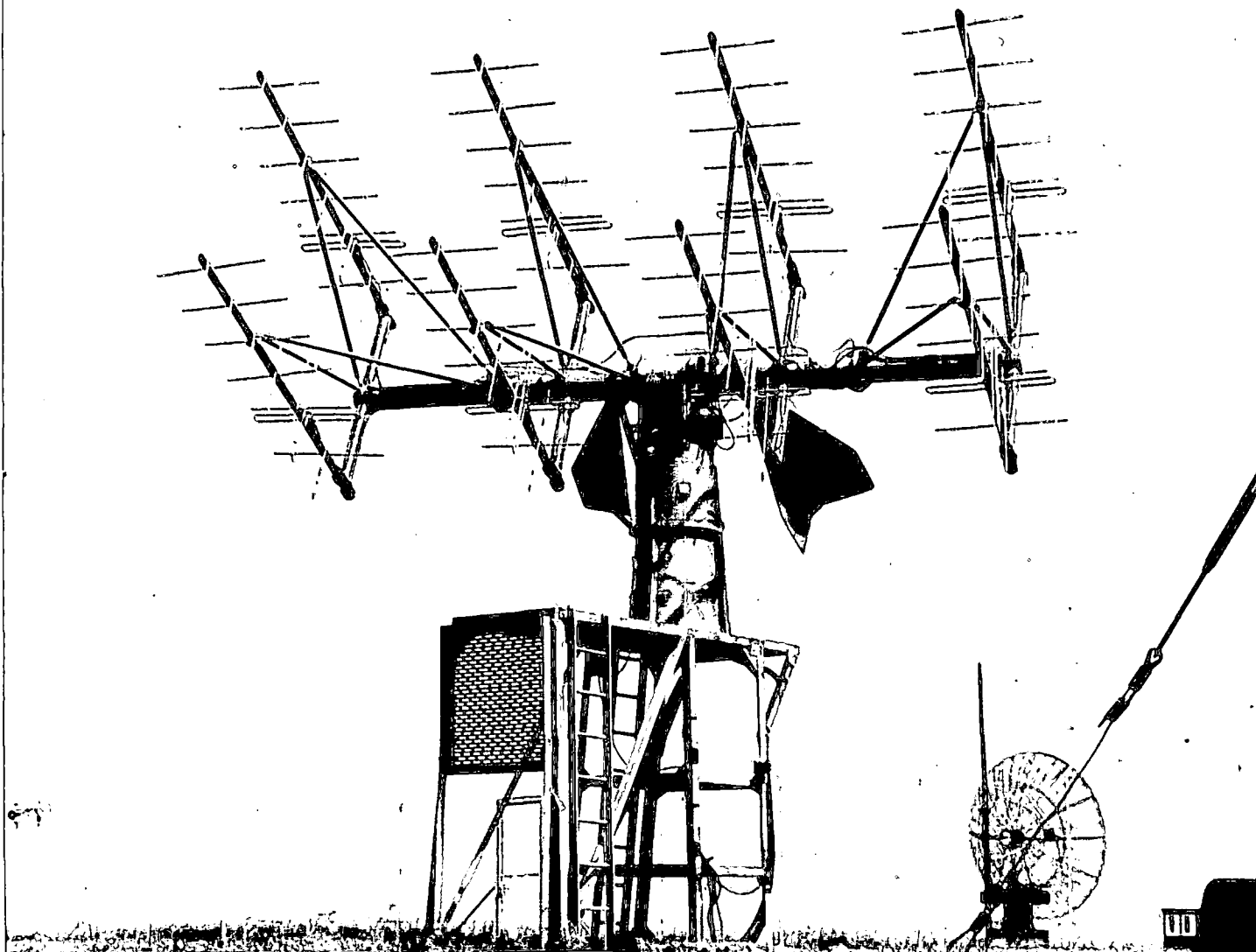
FIXES

DENSITY OF SIGNALS IN THE BAND IS THE BIG FACTOR — IT TAKES LONGER TO SORT OUT THE REQUIRED SIGNAL.

— IN THE HIGHEST DENSITY BAND (THE [] BAND) FIXES TAKE []

— THE DENSITY DECREASES AS THE FREQUENCY DECREASES — THE [] CAN BE LOCATED IN []

— THE [] (WHERE THE DENSITY IS LOW) CAN BE FIXED QUICKLY — [] IS DOING [] IN [] ON []



COLLECTION ANTENNA ARRAY
(AZIMUTH-ELEVATION CONTROLLED)

Two antennas installed at each
of the collection sites.

Photograph -

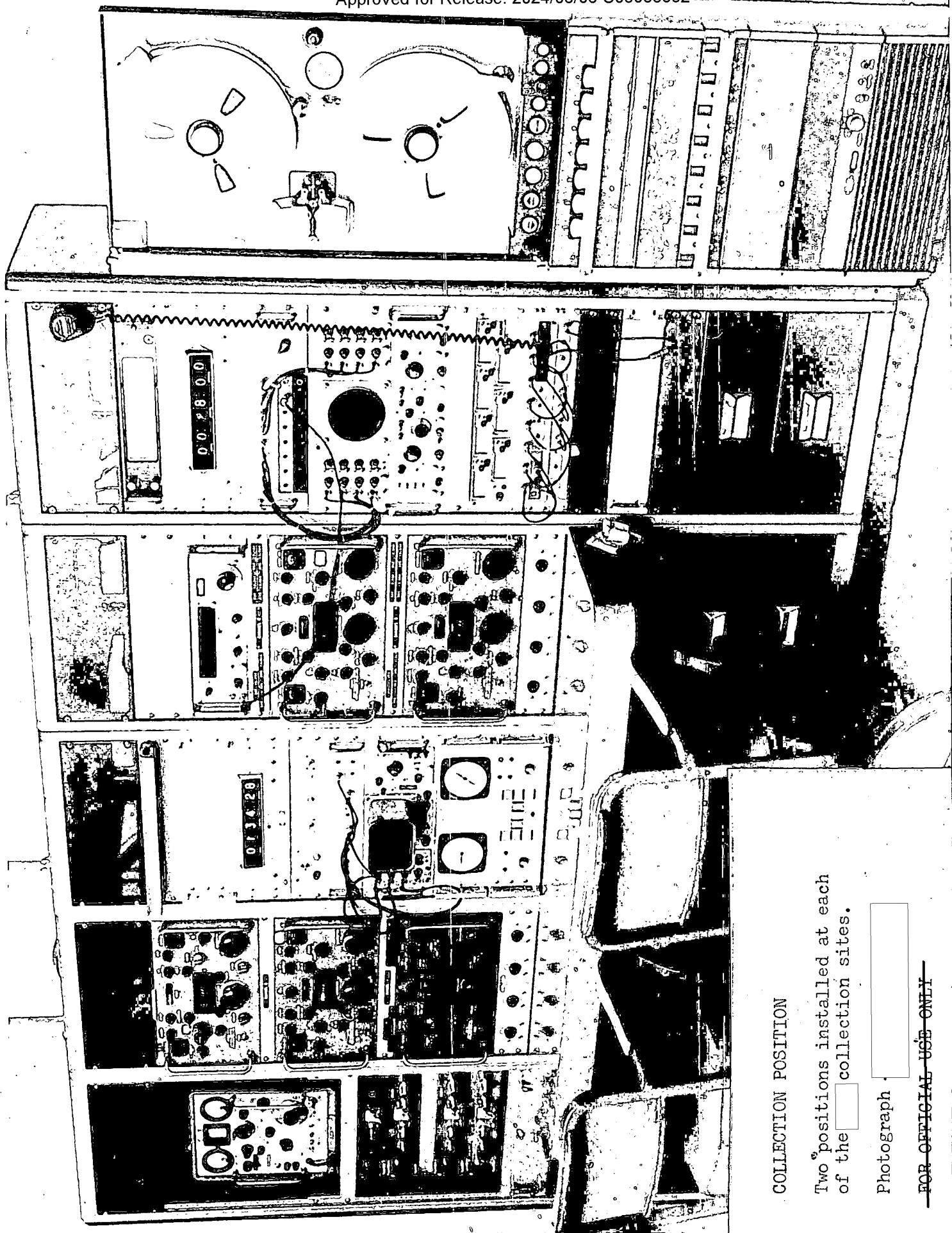
~~FOR OFFICIAL USE ONLY~~



COMMAND ANTENNA ARRAY
(AZIMUTH-ELEVATION CONTROLLED)

New antenna scheduled for installation
at and
subsequently at
and

~~FOR OFFICIAL USE ONLY~~



COLLECTION POSITION

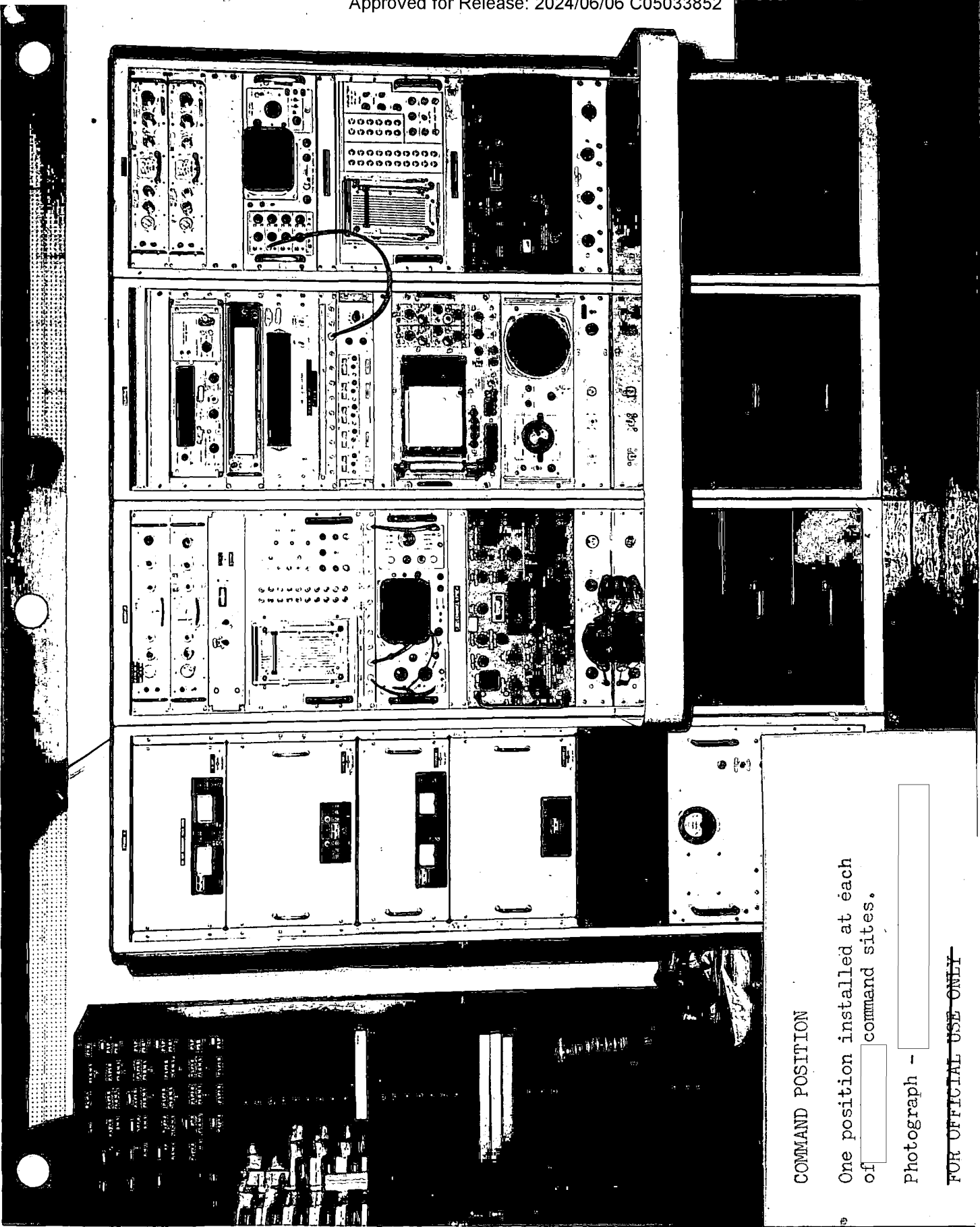
Two positions installed at each of the [] collection sites.

Photograph []

~~FOR OFFICIAL USE ONLY~~

25X1

25X1



COMMAND POSITION

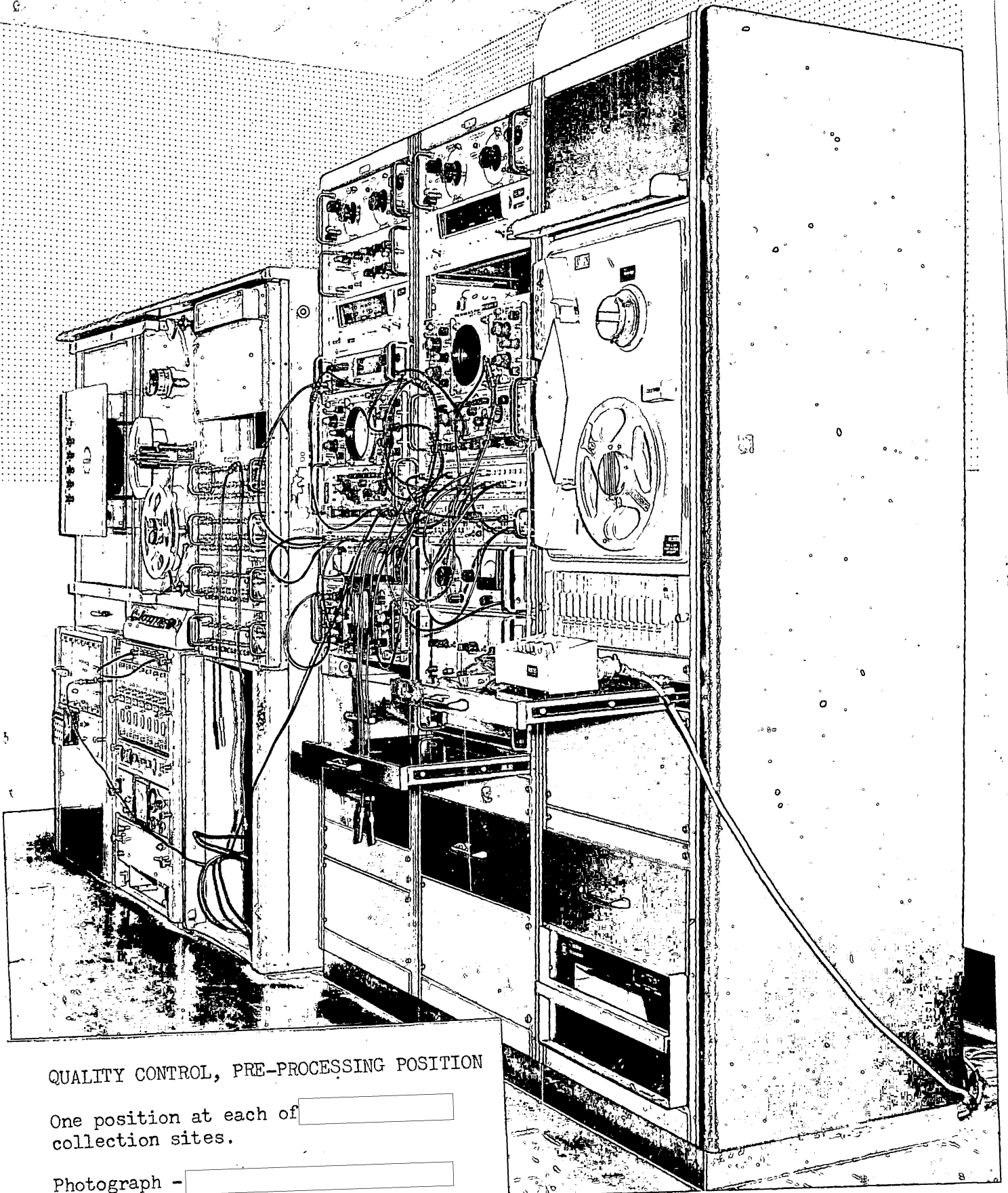
One position installed at each of [redacted] command sites.

Photograph - [redacted]

~~FOR OFFICIAL USE ONLY~~

25X1

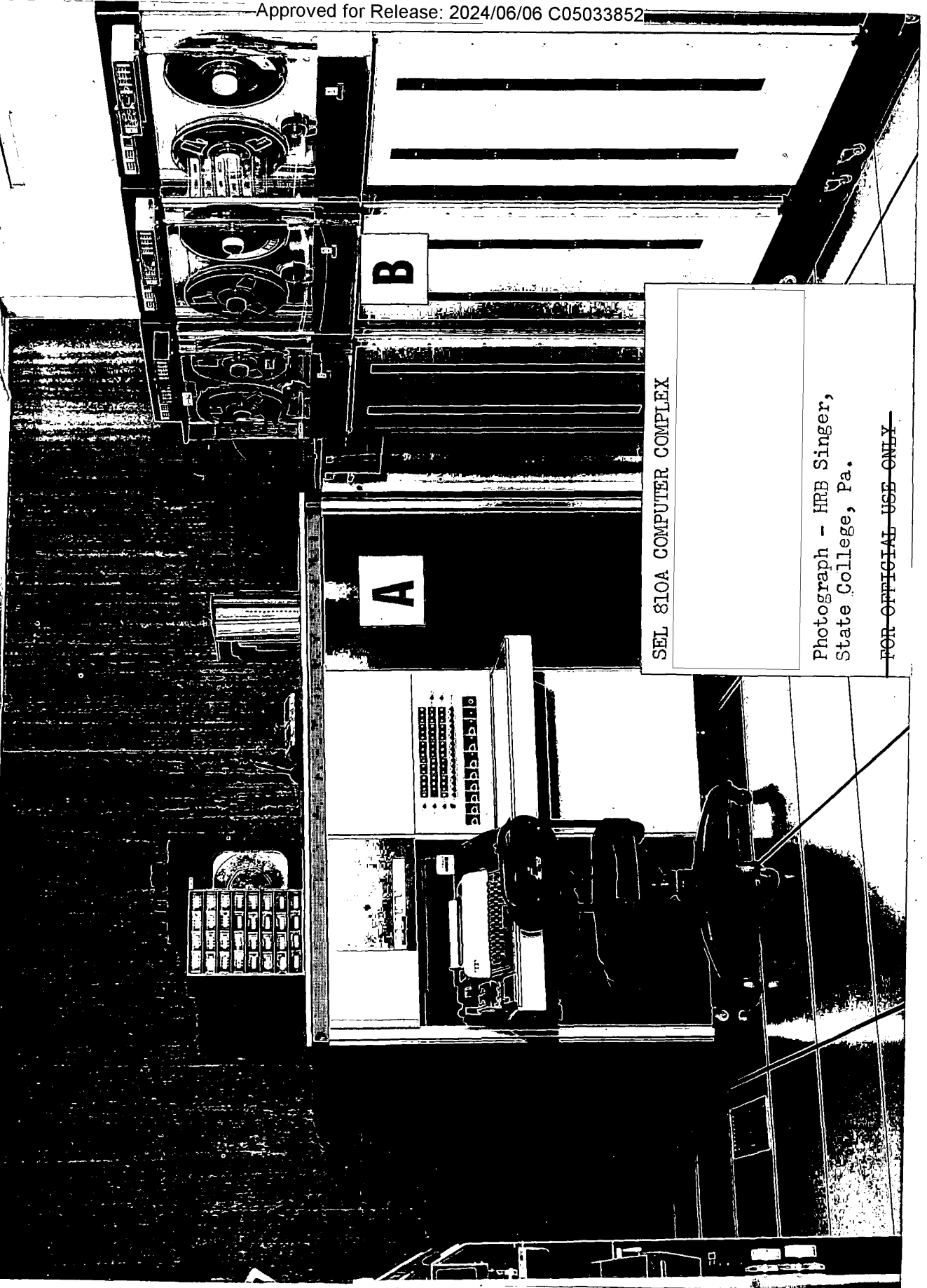
25X1



QUALITY CONTROL, PRE-PROCESSING POSITION

One position at each of
collection sites.

Photograph -



B

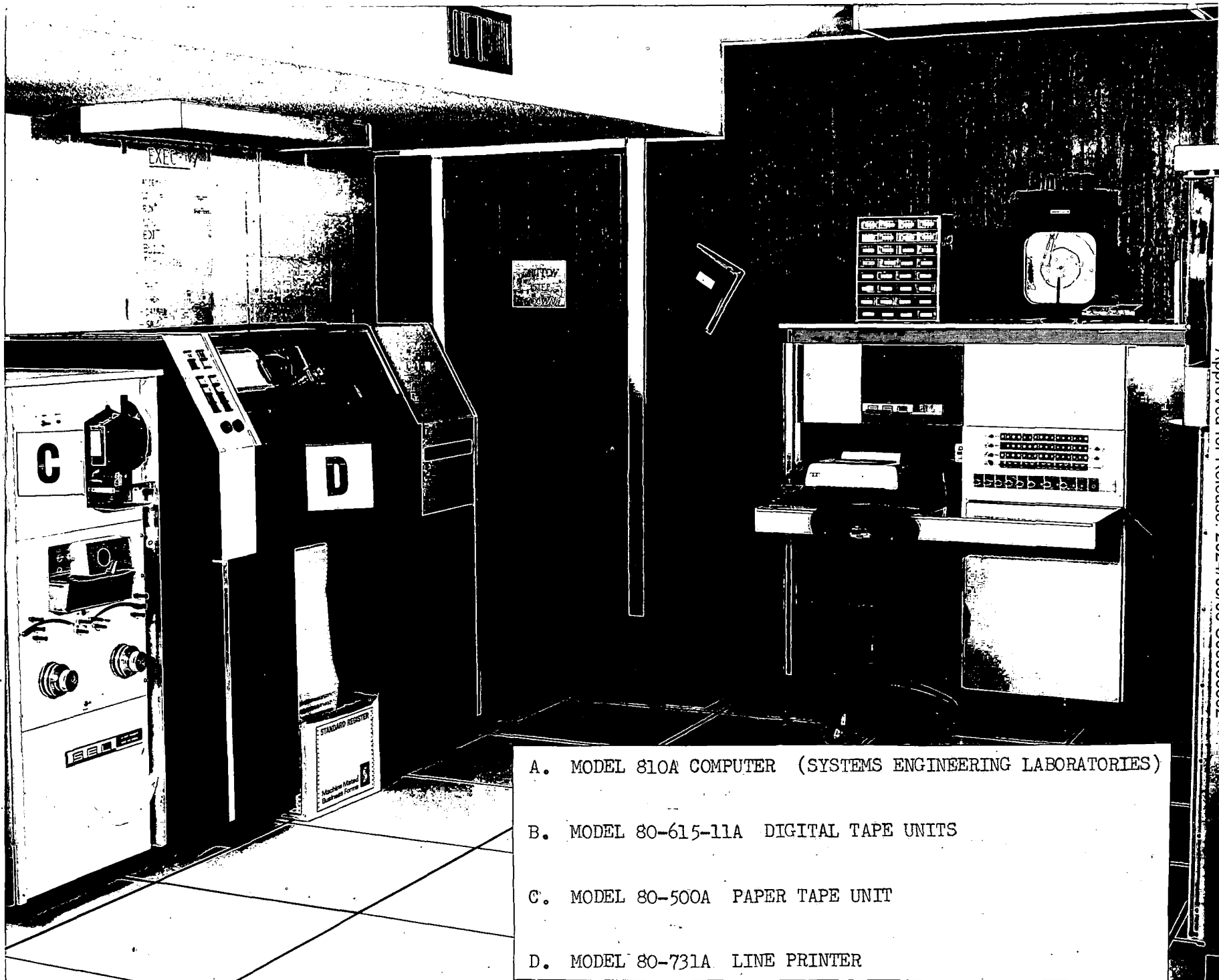
A

SEL 810A COMPUTER COMPLEX

Photograph - HRB Singer,
State College, Pa.

~~FOR OFFICIAL USE ONLY~~

25X1



- A. MODEL 810A COMPUTER (SYSTEMS ENGINEERING LABORATORIES)
- B. MODEL 80-615-11A DIGITAL TAPE UNITS
- C. MODEL 80-500A PAPER TAPE UNIT
- D. MODEL 80-731A LINE PRINTER

VZCZCAEA 630
121217 RR VVV RUXPDAL 2131800 00000-XXXX--RUCAEAEA
ZNY XXXXX VVV ZNM
R 011659Z ZEL
BT
XXXXX
COGNAC 915, CONCH 305

~~SECRET~~ 011659Z AUG 77 CITE WHIG 1002
COGNAC, CONCH.
HANDLE VIA BYEMAN CONTROL CHANNELS.
EARPOP.

COGNAC FOR ADM YOWELL; CONCH FOR CAPT QUIGLEY FROM DR. COOK.
SUBJECT: ~~POPPY OPERATIONS~~

1. AS A RESULT OF CONGRSSIONAL ACTIONS, YOU ARE DIRECTED TO PHASE OUT THE POPPY PROGRAM IMMEDIATELY AND COMPLETE ALL PROGRAM-ASSOCIATED ACTIVITY NLT THE END OF FY 77.
2. PHASE-OUT SHOULD BE ACCOMPLISHED WITHIN THE CURRENTLY-APPROVED PROGRAM OF \$787K. ANY TERMINATION COSTS WHICH CANNOT BE ACCOMMODATED WITHIN THE \$787K SHOULD BE IDENTIFIED TO US AS SOON AS THEY ARE AVAILABLE. INSTRUCTIONS CONCERNING THE USE OF THE ADDITIONAL FUNDS (\$500K) CURRENTLY HELD BY CONCH WILL BE TRANSMITTED BY WHIG IN THE NEAR FUTURE.

2-2 IMPDET
~~SECRET~~
BT

NNNN 2131821

VZCZCAEA423
 121217 PR VVV RUXEAEA0632 2131901 00000-XXXX--RUXEAGA RUXEAMA RUXEAMC,
 RUXBAAQ RUXEDAA.
 ZNY XXXXX VVV ZMM
 P R 011902Z
 BT
 XXXXX
 CONQUER 235, KELP 309, [] 919, COGNAC 764, CONCERT, 762
 CONCERT PASS PUCA

~~SECRET~~ 011902Z AUG 77 CITE CONCH 2569
 PRIORITY CONQUER, KELP, [] INFO COGNAC, PUCA.
 HANDLE VIA BYEMAN CONTROL CHANNELS ONLY

EARPOP/POLICY
 POPPY OPERATIONS

- A. THIS 011659Z AUG 77 CITE 1002 (NOTAL)
1. REF A DIRECTED PHASING OUT OF THE POPPY PROGRAM IMMEDIATELY, AND THAT COMPLETION OF ALL PROGRAM ASSOCIATED ACTIVITY TERMINATE NLT END OF PY 77.
 2. REQUEST K/CONQUER AND [] ASSIGN POPPY ACTION OFFICER TO EFFECT SMOOTH AND ORDERLY TERMINATION ASAP WITHIN CURRENT DIRECTION. NOMINEES ARE TO CONTACT [] BY 2 AUG TO DEVELOP PROGRAM OF ACTION AND MILESTONES IAW REF A.

E-2 IMPDET

~~SECRET~~

BT

OUT

NNNN

VZCZCAEA624

12 12 17 RR VVV RUXEAEA0639 2271539 00000-XXXX--RUXEAGA RUXBAAQ RUXEAI A
RUXEACA.

ZNY XXXXX VVV ZMM

R 15 1540Z

BT

XXXXX

CONQUER 257, COGNAC 820, [REDACTED] INGOT 307

~~SECRET~~ 15 1540Z AUG 77 CITE CONCH 0625

CONQUER INFO COGNAC, [REDACTED] INGOT.

HANDLE VIA BYEMAN CONTROL CHANNELS ONLY

EARPOP/POLICY

DEINSTALLATION OF POPPY SYSTEMS (S-BE)

A. CONQUER 121525Z AUG 77 CITE 0984

B. [REDACTED] 101128Z AUG 77 CITE 3457

1. FINAL PLANS FOR REMOVAL AND SHIPMENT OF POPPY EQUIPMENTS AT [REDACTED] AND KWINGOT ARE NOW BEING MADE. SCHEDULE WILL BE PROMULGATED WHEN FIRM. FOLLOWING HAS ALREADY BEEN DETERMINED:

A. ALL EQUIPMENTS WILL BE RETURNED FROM [REDACTED] WITH EXCEPTION OF ANTENNAS AND SUPPORT A/C UNIT. THIS INCLUDES ALL SPARE PARTS IN THEIR RESPECTIVE MSP CABINETS, TEST EQUIPMENTS AND ANY SPECIAL TOOLS INVOLVED.

B. ALL NECESSARY PACKING AND SHIPPING MATERIALS NEEDED TO ACCOMMODATE [REDACTED] EQUIPMENTS WILL BE PROVIDED BY [REDACTED] WILL PROVIDE FOR PACKING MATERIALS AT KWINGOT BUT IT IS ASSUMED THAT CRATING MATERIALS

OUT

PAGE TWO CONCH 0625 ~~SECRET~~

WILL BE AVAILABLE AS INDICATED REF A.

C. ONLY A PARTIAL RETRIEVAL WILL BE MADE FROM KWINGOT. UNITS TO BE RETURNED WILL BE DEINSTALLED AND SHIPPED BY [REDACTED] OTHER UNITS MAY BE SURVEYED OR OTHERWISE DISPOSED AT KWINGOT, PREFERABLY ON SCHEDULE DETERMINED BY KWINGOT AND MAKING MAXIMUM USE OF LOCAL RESOURCES.

2. RECOMMEND ALL MATERIALS PARA 1A REF B, AND SIMILAR MATERIALS AT KWINGOT, BE RETAINED ONBOARD AT EACH STATION. FINAL DISPOSITION WILL BE PROVIDED [REDACTED]

E-2 IMPDET

~~SECRET~~

BT

NNNN

XXXXX

COGNAC 831, CONQUER 259, [] INGOT 308, [] KELP 318

~~SECRET~~ 161715Z AUG 77 CITE CONCH 0636
CONQUER INFO COGNAC, [] INOGT, [] KELP.

HANDLE VIA BYEMAN CHANNELS ONLY

EARPOP/OPS

POPPY EQUIPMENT DEINSTALLATION (S-8E)

A. KW CONQUER 121525Z AUG 77 CITE 0984

1. FOLLOWING SCHEDULE AND SUPPORT REQUIREMENTS PROVIDED IAW REF A:

ACTIVITY	[]	KWINGOT
ETA PACKING MATERIALS	31 AUG	7 OCT
ETA SHIPPING VANS	9 SEP	N/A
ETA [] TEAM	12 SEP	18 OCT
TEAM COMPOSITION	9 MEN	6 MEN
DEINSTALLATION	13-23 SEP	19-24 OCT
SUPPORT REQUIREMENTS	2K LB FORK LIFT FLAT BED TRUCK (2 TON) (NOTE)	2K LB FORK LIFT 1500 LB (25FT BOOM) USE OF VEHICLE FOR TEAM

NOTE: AT [] AN AREA IN THE SUPPLY WAREHOUSE IS NEEDED IN WHICH

OUT

PAGE TWO CONCH 0636 ~~SECRET~~

TO STAGE THE EQUIPMENT PACKAGING.

2. [] TEAM ARRIVAL WILL BE ADJUSTED IF PACKING MATERIALS/VANS HAVE NOT ARRIVED ONSITE ACCORDING TO ABOVE SCHEDULE. THESE SHOULD BE CONFIRMED UPON ARRIVAL.

3. ANTICIPATE FOLLOWING WILL BE RETURNED FROM KWINGOT:

- A. TWO DIGITAL TAPE TRANSPORTS (7 TRACK).
- B. DIGITAL TAPE TRANSPORT CONTROLLER CABINET.
- C. THREE ANTENNA PEDESTALS.
- D. THREE ANALOG RECORDERS.
- E. TWO T/I DIGITAL TRANSPORTS.
- F. TWO MEMORY MODULES FROM BTS RACK.
- G. DATA DISC FROM Q/C POSITION.
- H. RACAL RECEIVERS.
- I. FREQUENCY STANDARD AND POWER PACK.
- J. OTHER SELECTED PCM AND DISPLAY EQUIPMENT FROM THE COMMAND POSITION.

4. NAMES AND CLEARANCES OF [] TEAM MEMBERS WILL BE PROVIDED SEPARATELY.

E-2 IMPDET

~~SECRET~~

BT

NNNN

Page Denied

Duplicate

Page Denied

Duplicate

Page Denied

Page Denied

Duplicate

Page Denied