

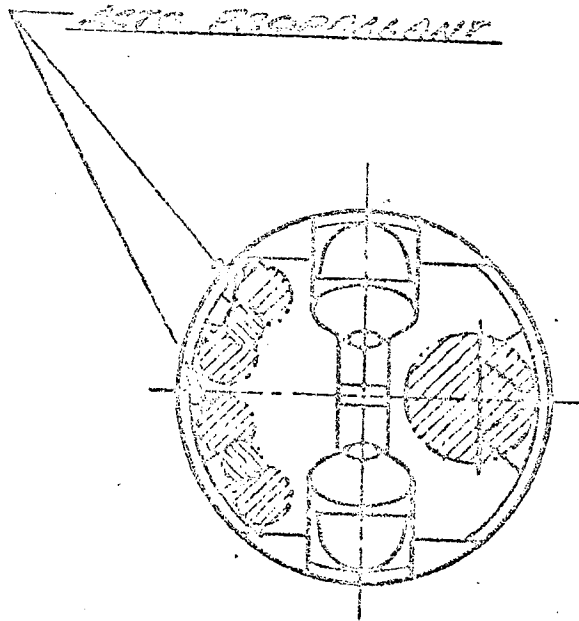
~~SECRET~~ SPECIAL HANDLING

SUPPORT MODULE

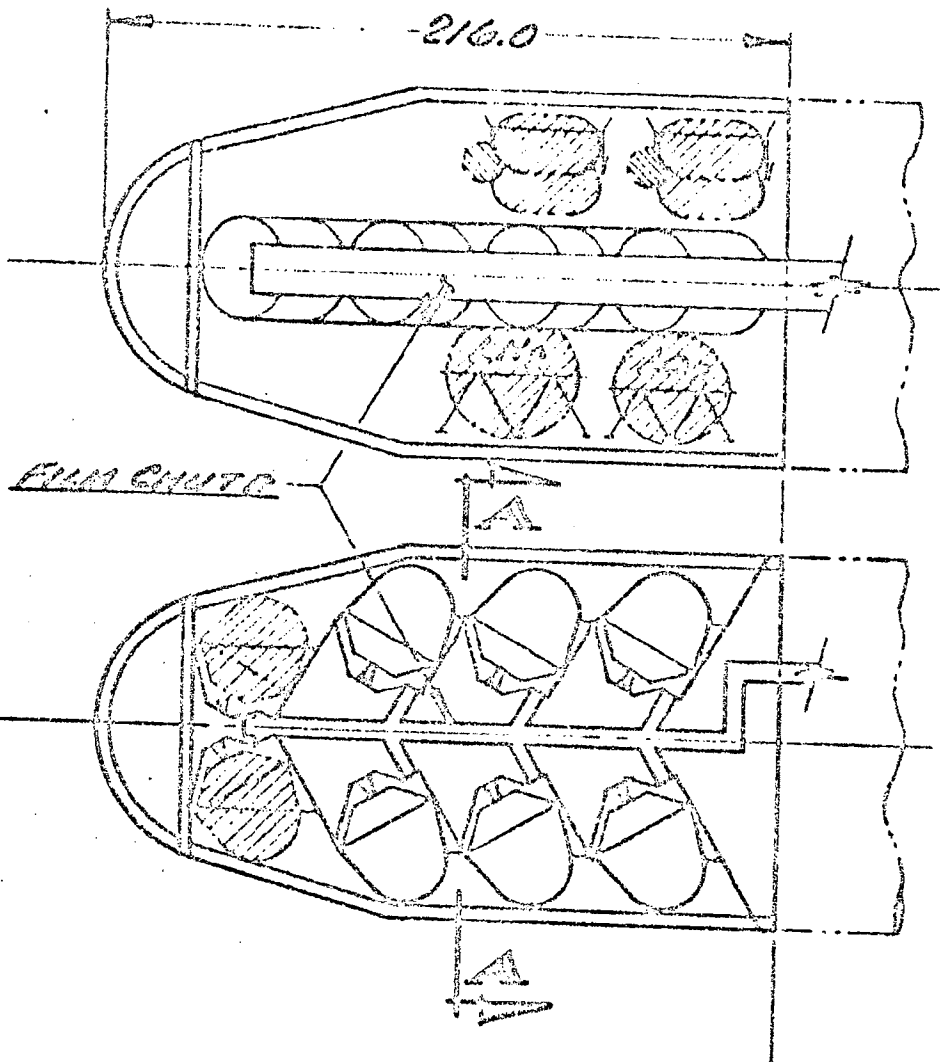
90 DAY - WITH 60 DAY


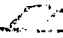
GROWTH CAPABILITY

ARTIC PROPELLANT



SECTION AA

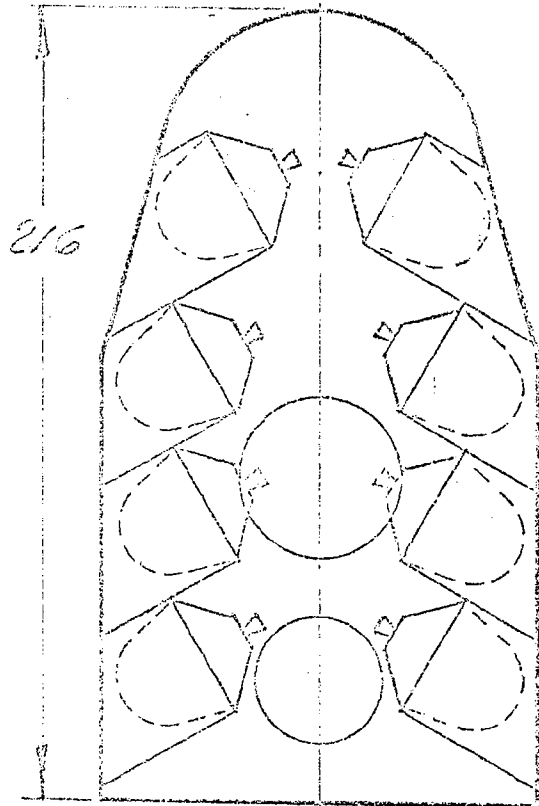


 SUPPORT MODULE  
 IN CASE

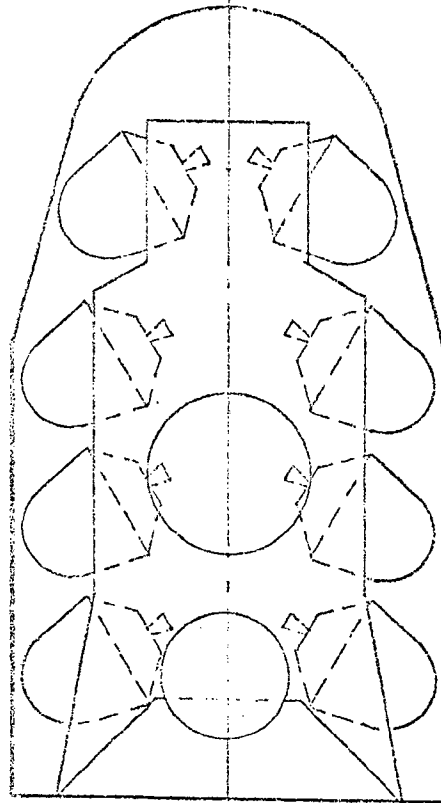
OTA 726.0

~~SECRET~~ SPECIAL HANDLING

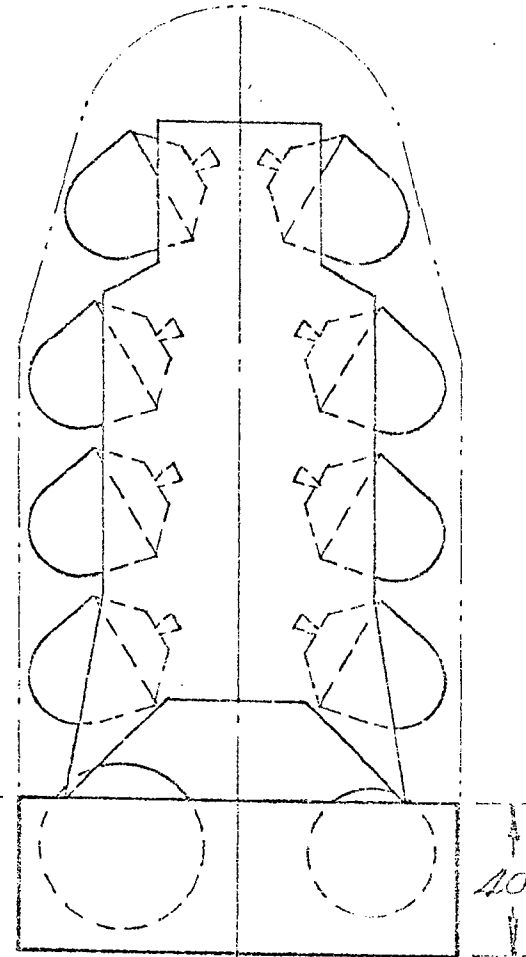
# CONFIGURATIONS



CONCEPT A



CONCEPT B



CONCEPT C

○ INTEGRAL STRUCTURE

○ INDEPENDENT STRUCT

○ INTEGRAL RV TANK FAIRING STRUCT ○ INDEPENDENT RV STRUCT

○ DOOR MOUNTED ACTS & CRYO TANKS ○ DOOR MOUNTED ACTS & CRYO TANKS

○ REMOVABLE ACCESS DOORS ○ REMOVABLE ACCESS DOORS

○ EJECTABLE RV DOORS ○ EJECTABLE RV DOORS

○ MODULAR STRUCTURE

○ EJECTABLE FAIRING (WT SAVINGS)

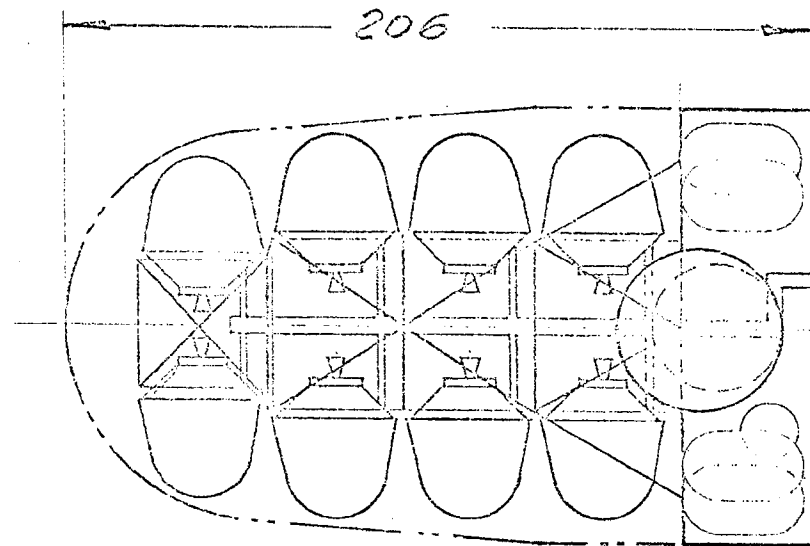
○ ACTS & CRYO TANKS IN MODULE

○ UNRETRACTED A/C ACCESSIBILITY

○ INDEPENDENT RV STRUCT

(D) ~~SECRET~~ SPECIAL HANDLING

CONCEPT C



◦ MODIFICATION

- STRAIGHT RV'S
- MODIFIED FAIRING SHAPE
- REDUCED FAIRING LENGTH

◦ MERITS

- WEIGHT SAVING - STAGED FAIRING
- CLEANEST INTERFACE
- EASES DEVELOPMENT & LIFE TESTING
- MAX ACCESSIBILITY: FACTORY & ON-PAD

(D) ~~SECRET~~ SPECIAL HANDLING

# BTL WIDE-BAND SYSTEM

