

~~TOP SECRET~~

HANDLE VIA BYEMAN / TALENT-KEYHOLE CONTROL SYSTEMS

Air  
Force  
Special  
Projects  
Production  
Facility  
History

Volume I  
Overview

DIRECTORATE OF SPECIAL PROJECTS  
OFFICE OF THE SECRETARY OF THE AIR FORCE

BYE 15254-76

Classified by BYE 1  
Exempt from general declassification  
Schedule of Executive Order 11652  
Exemption category [ss 5B(2)]  
Automatically declassified on  
IMPOSSIBLE TO DETERMINE

~~TOP SECRET~~

~~TOP SECRET~~

AFSPPF HISTORY  
Volume I

HEADQUARTERS, AIR FORCE SPECIAL PROJECTS PRODUCTION FACILITY

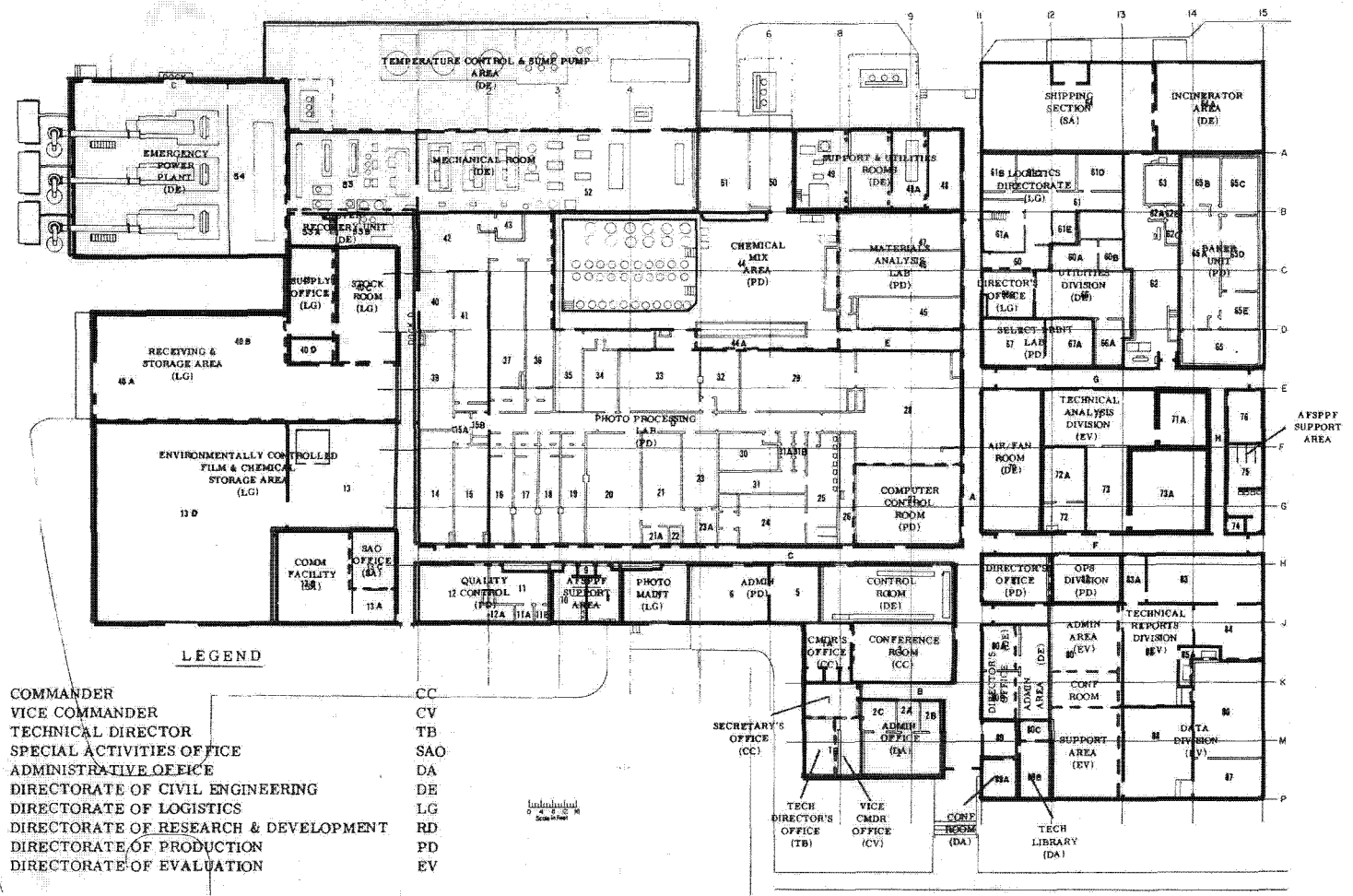


~~TOP SECRET~~

BYE 15254-76

Handle via ~~Byeman/Talent~~ Keyhole  
Controls Only

ROOM CONFIGURATION WITHIN BUILDING P-1900



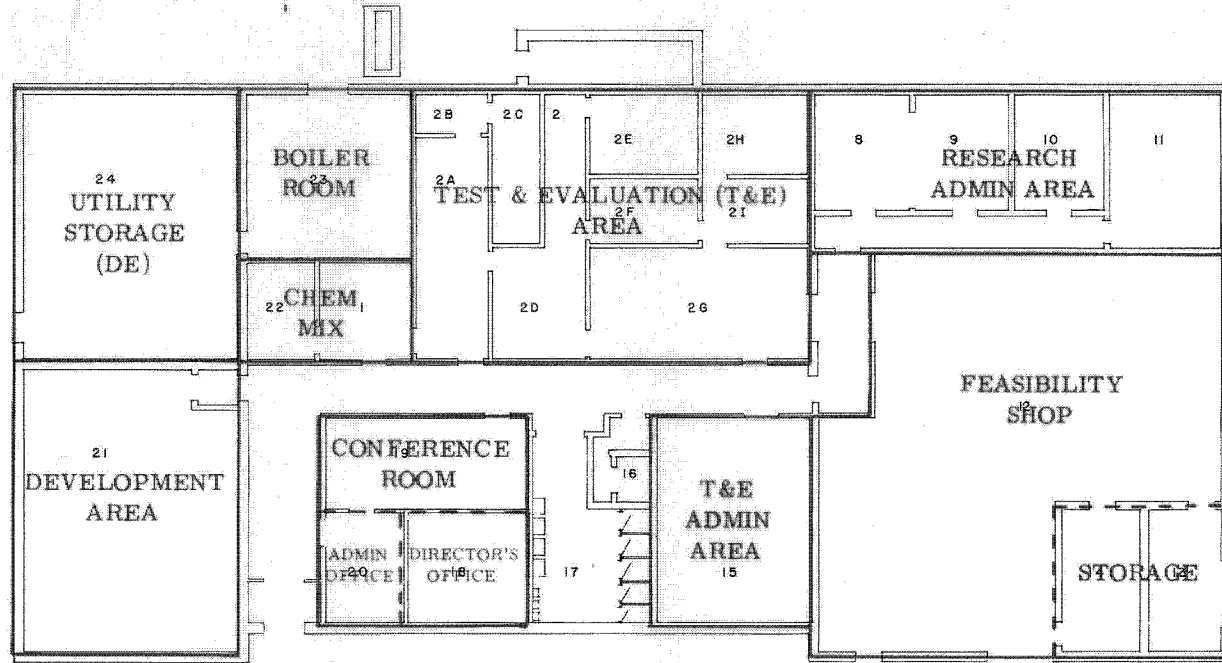
~~TOP SECRET - HEXAGON/GAMBIT/KENNEN~~

VI

BYE 15254-76

Handle via Byeman / Tolson / Reynolds  
Controls Only

ROOM CONFIGURATION WITHIN BUILDING P-1875



SCALE: 1/8" = 1'-0"

NOTE: All areas with the exception of Room 24 were under the responsibility of the Research and Development Directorate.

~~TOP SECRET - HEXAGON / GAMBIT / KENNEN~~

BYE 15254-76

vii

Handle via Eyeman / Talent / Kynode  
Controls Only

~~TOP SECRET~~

AFSPPF HISTORY  
Volume I

AUTOMATED CHEMICAL MIXING AREA



FIGURE 2-5

~~TOP SECRET~~

BYE 15254-76

2-13

Handle via ~~Byeman / Talent~~ Keyhole  
Controls Only



~~TOP SECRET~~

AFSPPF HISTORY  
Volume I

ELECTRONIC MONITORING/CONTROL SYSTEM



FIGURE 2-6

~~TOP SECRET~~

BYE 15254-76

Handle via ~~Byeman/Talent~~ Keyhole  
Controls Only

~~TOP SECRET~~

AFSPPF HISTORY  
Volume I

CHEMICAL ANALYSIS AREA

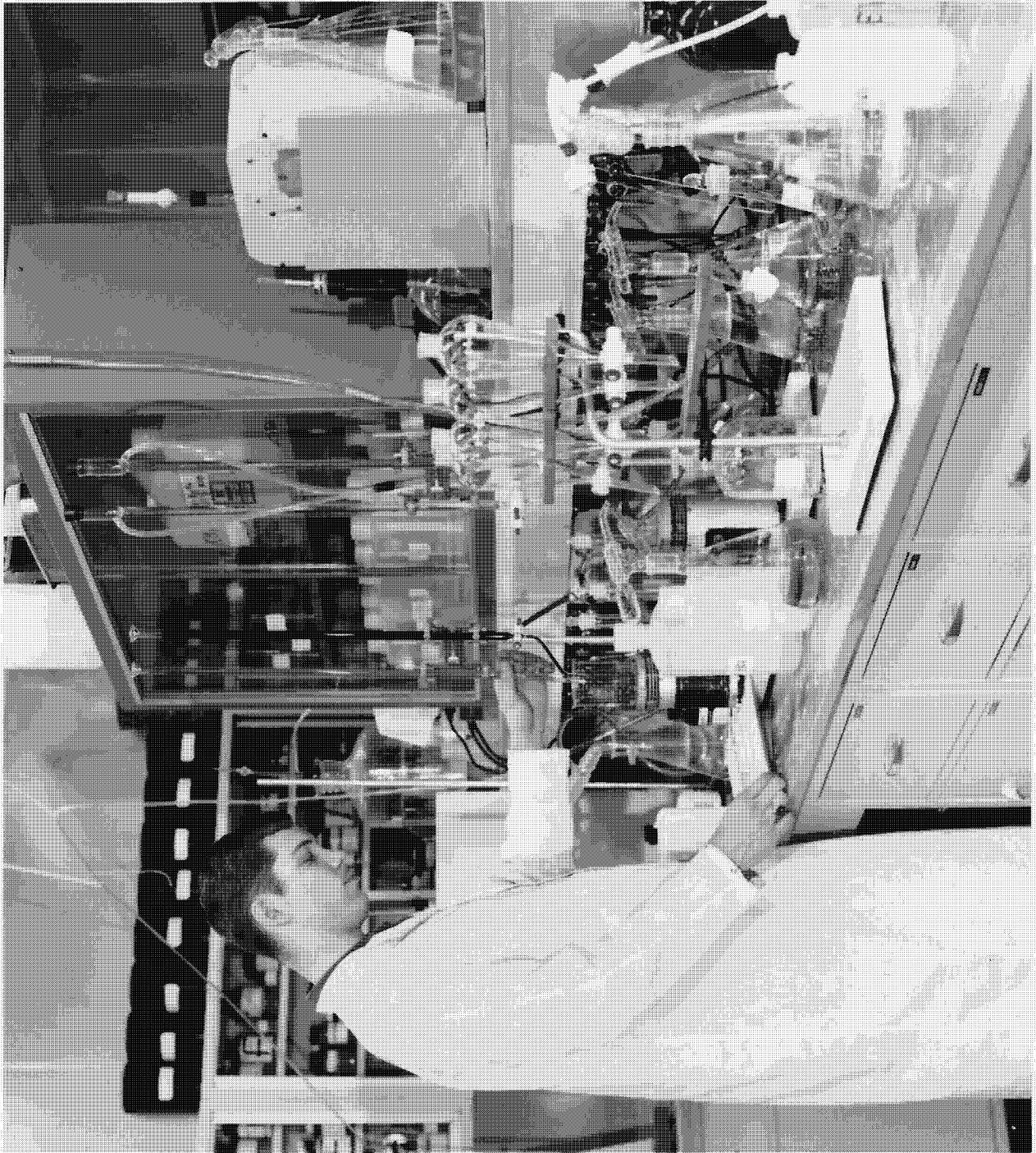


FIGURE 2-7

~~TOP SECRET~~

BYE 15254-76

Handle via Byeman / ~~Talent - Keyhole~~  
Controls Only

~~TOP SECRET~~

AFSPPF HISTORY  
Volume I

CALIBRATION/VIEWING/MICROGRAPH/DENSITOMETER EQUIPMENT  
IN MATERIALS ANALYSIS AREA



FIGURE 2-8

~~TOP SECRET~~

2-17

BYE 15254-76

Handle via ~~Byeman/Talent - Keyhole~~  
Controls Only



~~TOP SECRET~~

AFSPPF HISTORY  
Volume I

SELECT PRINT LAB PRECISION PRINTING AREA WITHIN THE BAKER UNIT



FIGURE 2-9

~~TOP SECRET~~

BYE 15254-76

Handle via ~~Byeman/Talent/Keyhole~~  
Controls Only

~~TOP SECRET~~

AFSPPF HISTORY  
Volume I

SELECT PRINT LAB STUDIO/MICROFILMING AREA

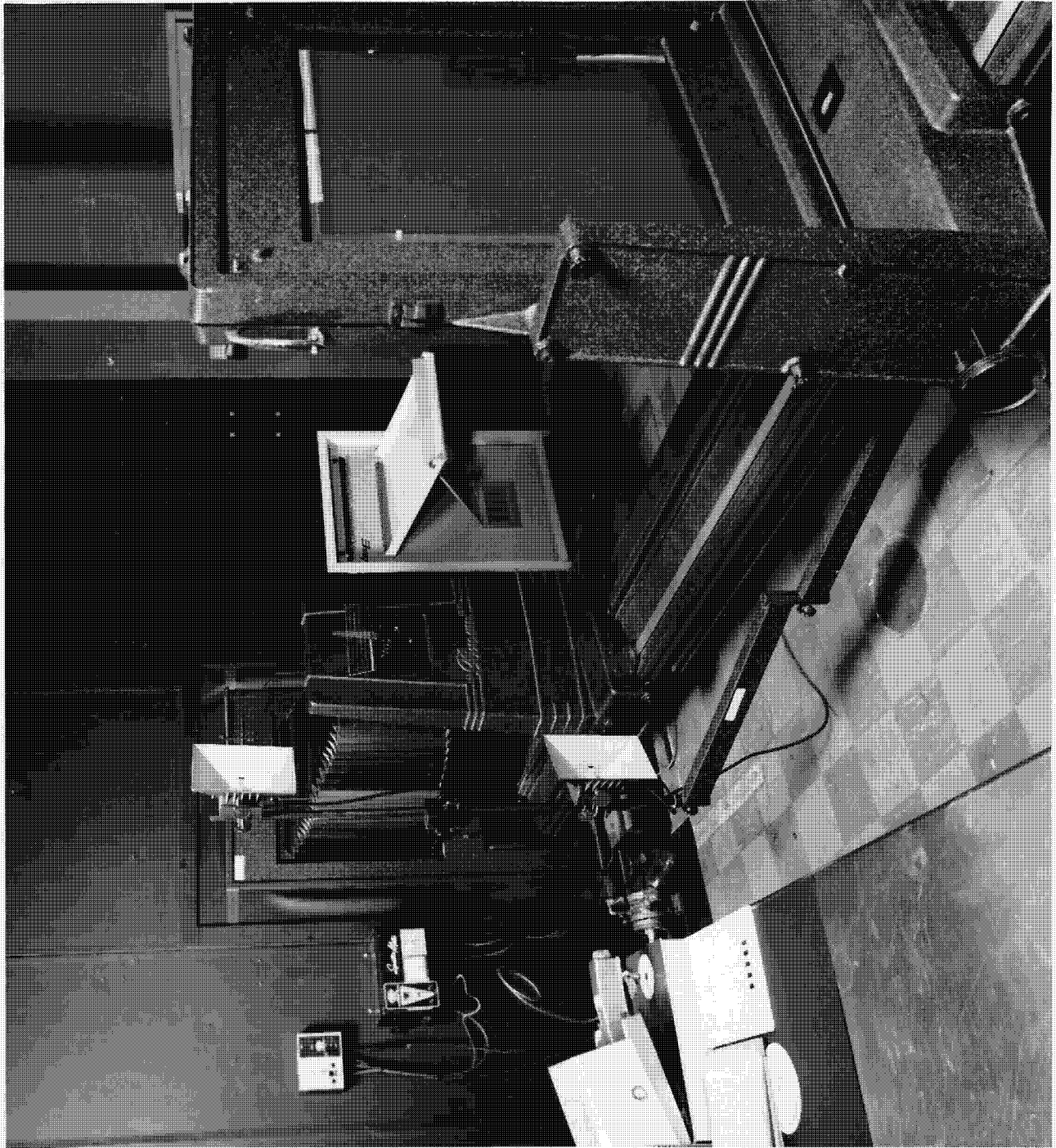


FIGURE 2-10

~~TOP SECRET~~

BYE 15254-76

Handle via Byeman/~~Talent - Keyhole~~  
Controls Only

~~TOP SECRET~~

AFSPPF HISTORY  
VOLUME I

THE COMPUTER MONITOR/CONTROL ROOM



FIGURE 2-11

~~TOP SECRET~~

BYE 15254-76

Handle via ~~Byeman/Talent/Keyhole~~  
Controls Only

~~TOP SECRET~~

AFSPPF HISTORY  
Volume I

DESPOOLING/DOWNLOADING AREA

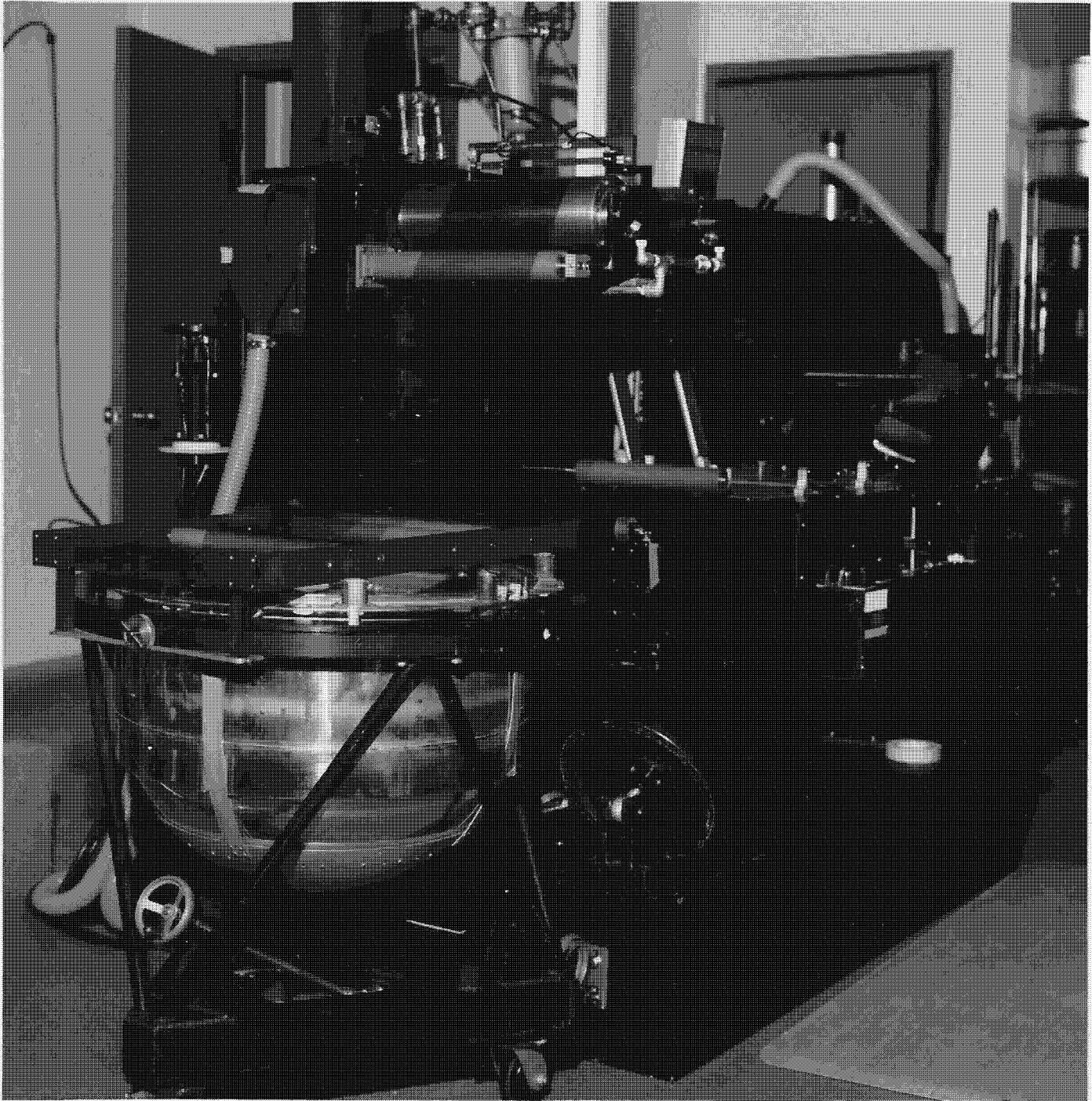


FIGURE 2-12

~~TOP SECRET~~

2-24

BYE 15254-76

Handle via ~~Byeman/Talent~~ Keyhole  
Controls Only

~~TOP SECRET~~

AFSPPF HISTORY  
Volume I

PRODUCTION PRINTING AREA



FIGURE 2-13

~~TOP SECRET~~

2-25

BYE 15254-76

Handle via Byeman/~~Talent - Keyhole~~  
Controls Only



~~TOP SECRET~~

AFSPPF HISTORY  
Volume I

PRODUCTION QUALITY CONTROL AREA



FIGURE 2-14

~~TOP SECRET~~

BYE 15254-76

2-26

Handle via ~~Byeman/Talent~~ Keyhole  
Controls Only

~~TOP SECRET~~

AFSPPF HISTORY  
Volume I

FEASIBILITY SHOP ACTIVITY

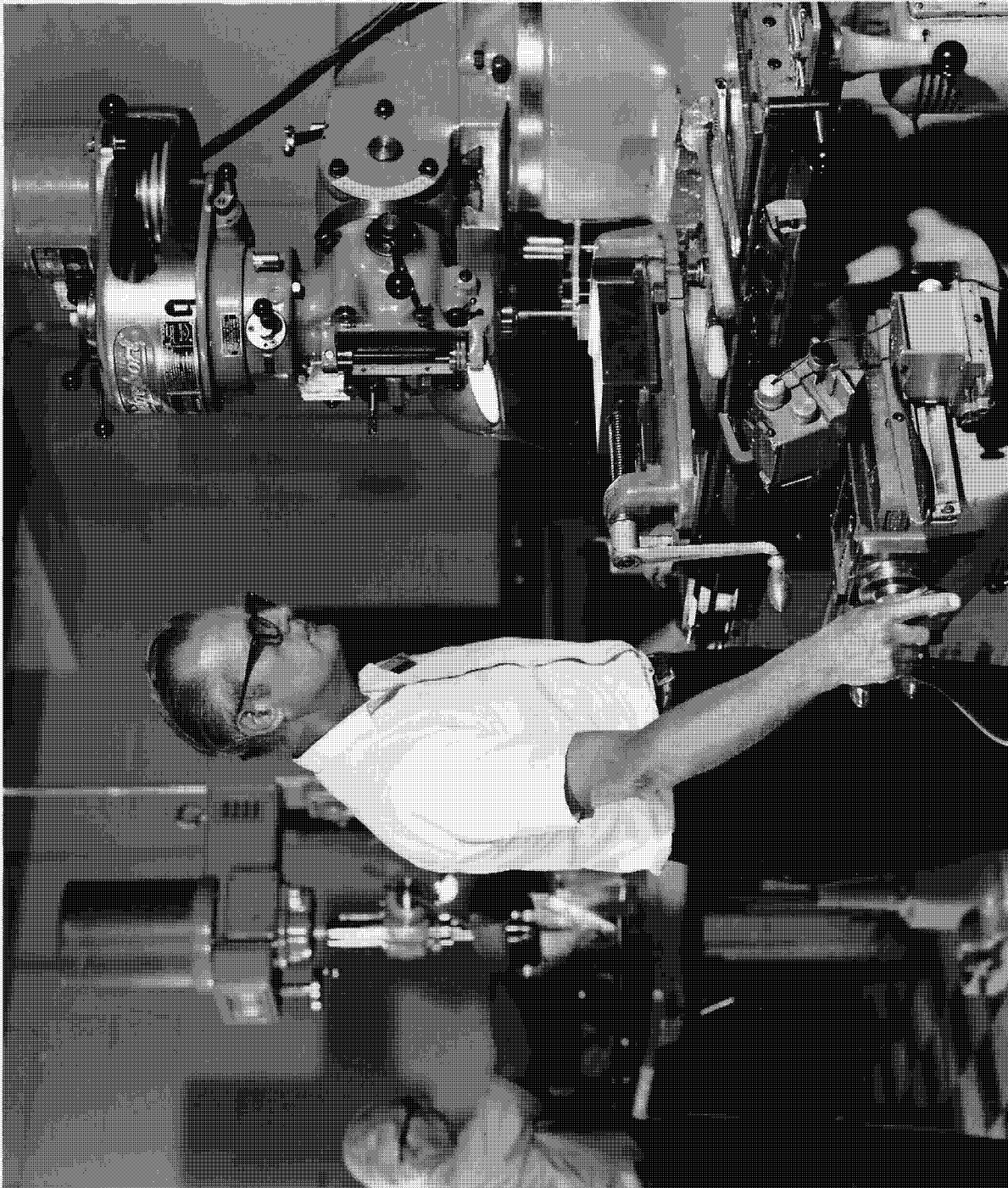


FIGURE 2-15

~~TOP SECRET~~

BYE 15254-76

Handle via ~~Byeman/Talent~~ Keyhole  
Controls Only

~~TOP SECRET~~

AFSPPF HISTORY  
Volume I

THE INTEGRATED 3211 COLOR PROCESSOR



FIGURE 2-16

~~TOP SECRET~~

BYE 15254-76

Handle via ~~Byeman / Talent - Keyhole~~  
Controls Only

~~TOP SECRET~~

AFSPPF HISTORY  
Volume I

THE PDS, MODEL 1050 MICRODENSITOMETER

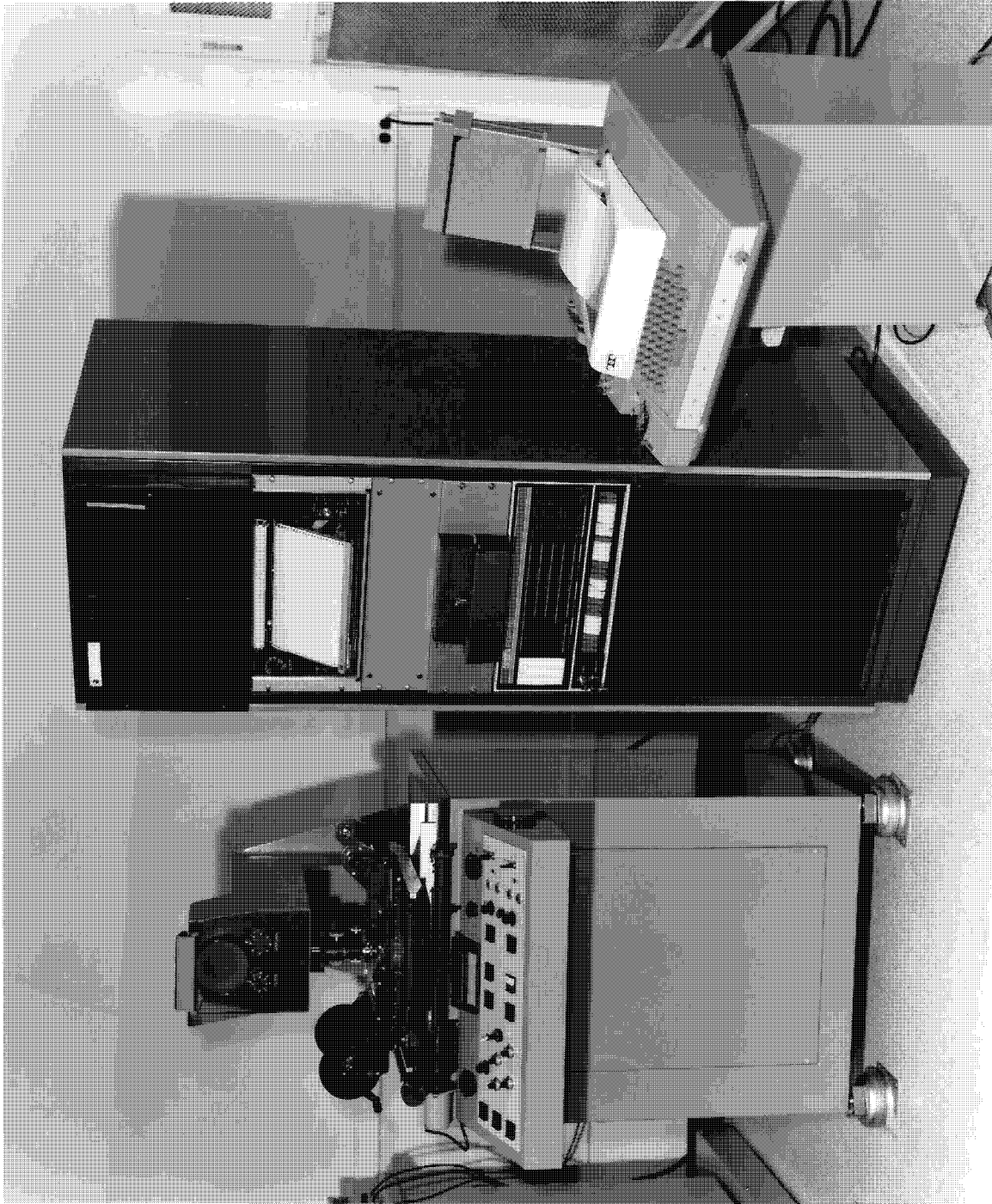


FIGURE 2-17

~~TOP SECRET~~

BYE 15254-76

Handle via Byeman/~~Talent - Keyhole~~  
Controls Only

~~TOP SECRET~~

AFSPPF HISTORY  
Volume I

DRY SILVER PROCESSOR



FIGURE 2-18

~~TOP SECRET~~

BYE 15254-76

Handle via ~~Byeman/Talent~~ Keyhole  
Controls Only



~~TOP SECRET~~

AFSPPF HISTORY  
Volume I

ITT DYNAMIC COLOR SCANNER



FIGURE 2-19

~~TOP SECRET~~

BYE 15254-76

2-43

Handle via Byeman/~~Talent Keyhole~~  
Controls Only

~~TOP SECRET~~

AFSPPF HISTORY  
Volume I

AERIAL VIEW OF THE CONSTRUCTION OF THE PLENUM AREA IN P-1900  
(August 1962)



FIGURE 2-20

~~TOP SECRET~~

BYE 15254-76

Handle via Byeman/~~Talent - Keyhole~~  
Controls Only

~~TOP SECRET~~

AFSPPF HISTORY  
Volume I

CONSTRUCTION OF MECHANICAL ROOM WHICH HOUSES P-1900 REFRIGERATION UNITS  
(August 1962)



FIGURE 2-21

~~TOP SECRET~~

BYE 15254-76

2-50

Handle via Byeman / Talent - Keyhole  
Controls Only

~~TOP SECRET~~

AFSPPF HISTORY  
Volume I

FOUNDATION FOR THE TEMPERATURE CONTROL AND SUMP PUMP AREA  
(October 1962)

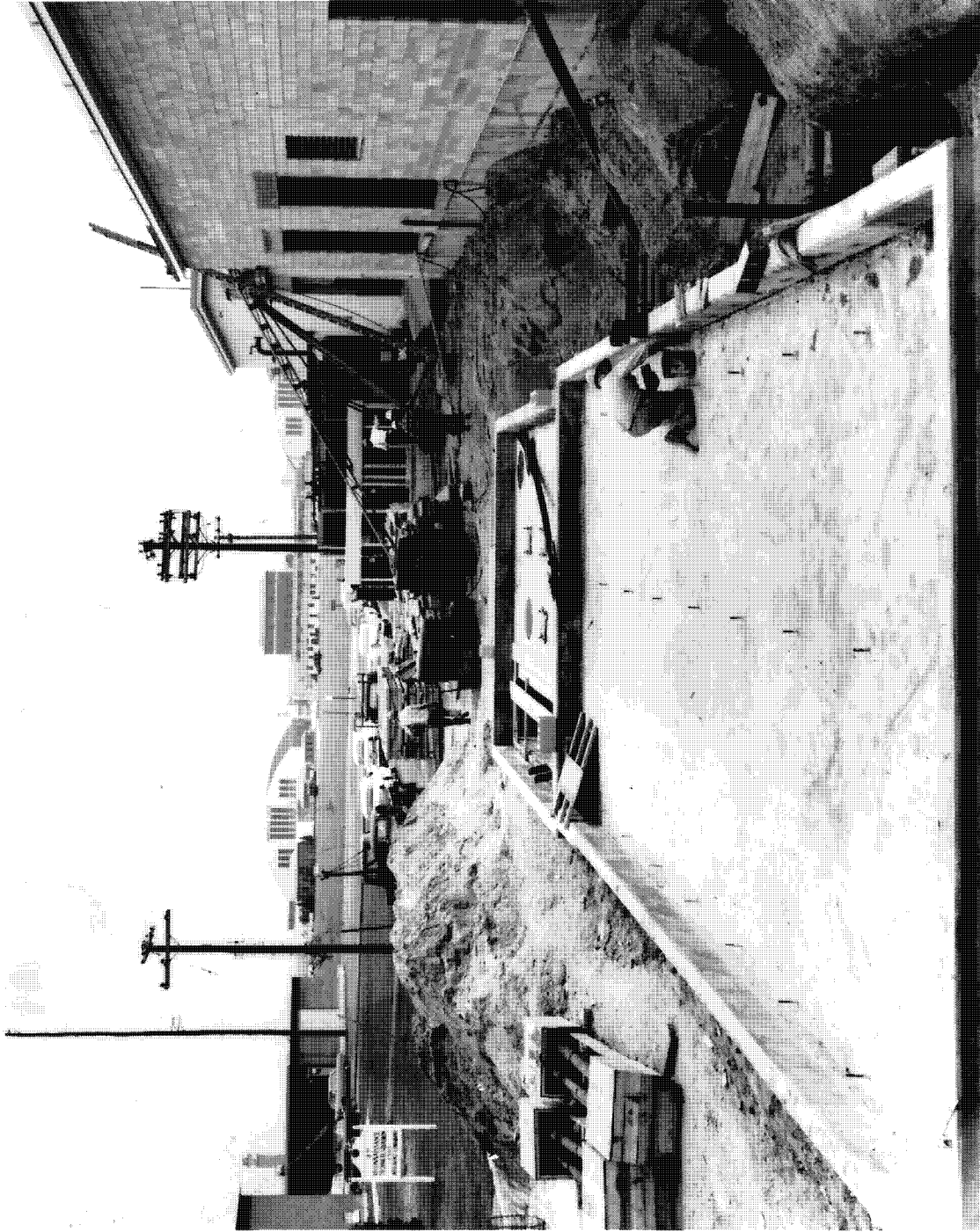


FIGURE 2-22

~~TOP SECRET~~

BYE 15254-76

Handle via Byeman / Talent - Keyhole  
Controls Only

~~TOP SECRET~~

AFSPPF HISTORY  
Volume I

CONSTRUCTION OF FOUNDATION FOR EMERGENCY POWER PLANT

(September 1969)

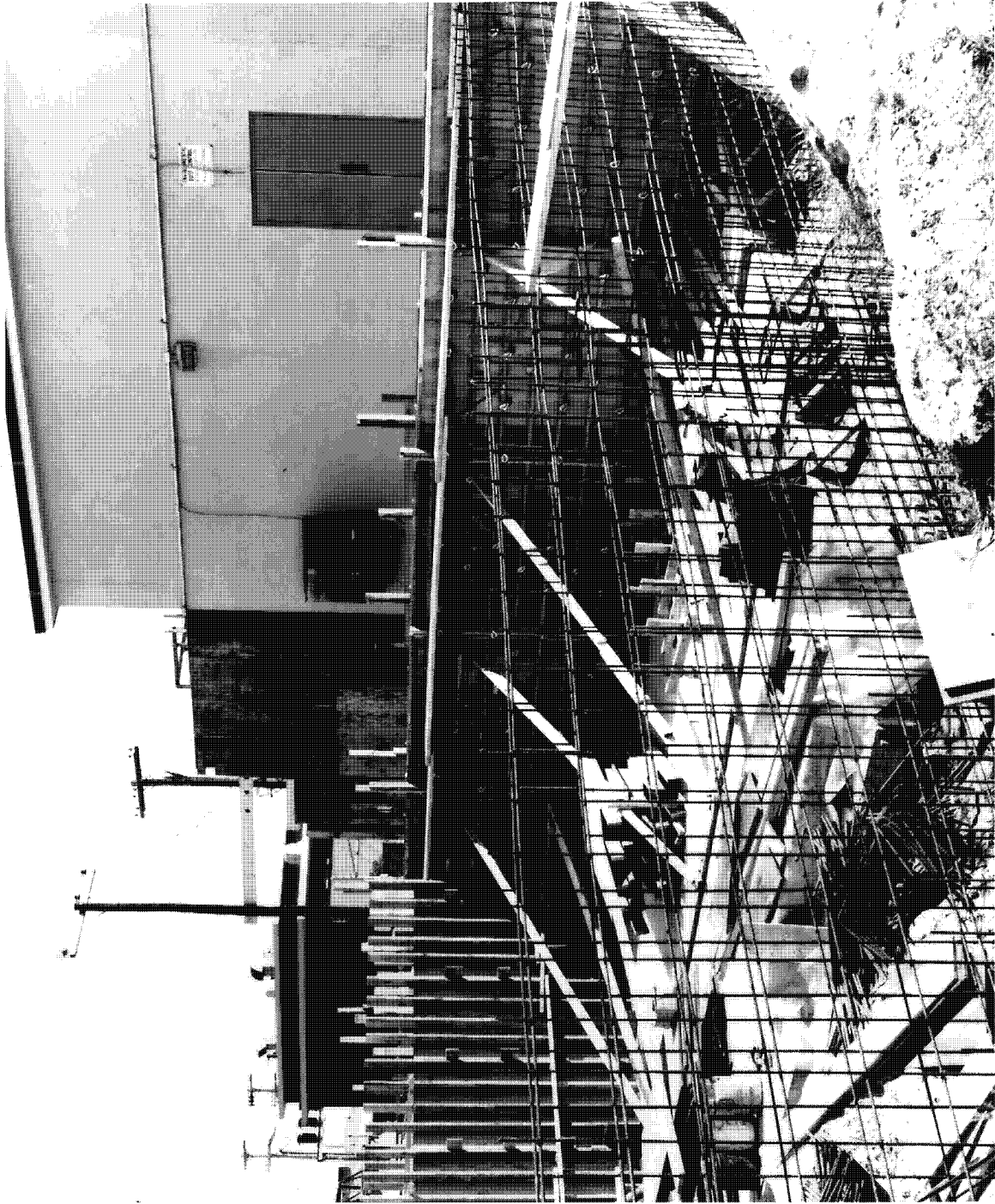


FIGURE 2-23

~~TOP SECRET~~

BYE 15254-76

Handle via ~~Byeman / Talent - Keyhole~~  
Controls Only



~~TOP SECRET~~

AFSPPF HISTORY  
Volume I

COMPLETED EMERGENCY POWER PLANT ADDITION TO P-1900  
(June 1972)



FIGURE 2-24

~~TOP SECRET~~

BYE 15254-76

Handle via Byeman/Talent/Keyhole  
Controls Only

~~TOP SECRET~~

AFSPPF HISTORY  
Volume I

EMERGENCY POWER PLANT EQUIPMENT

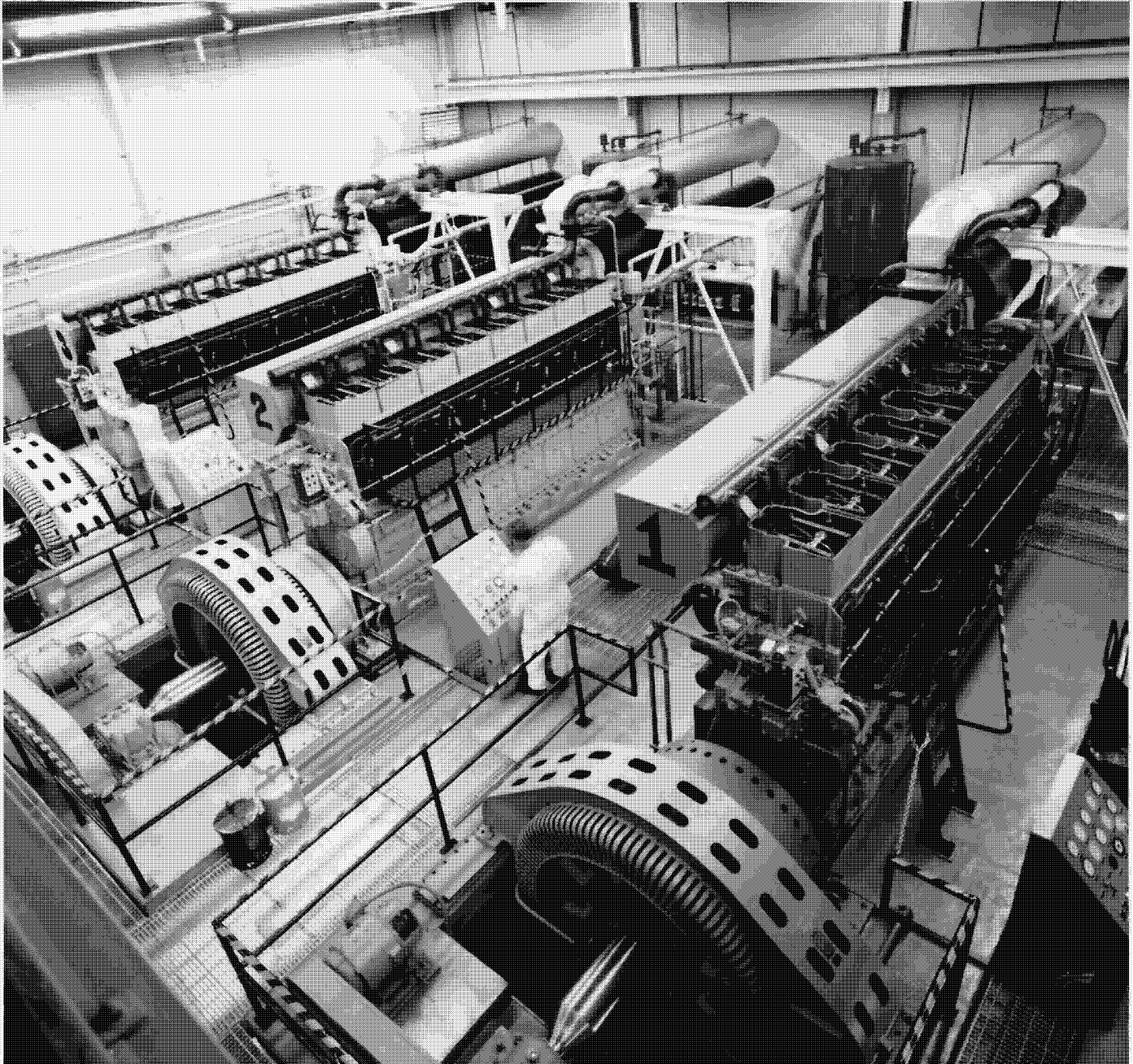


FIGURE 2-25

~~TOP SECRET~~

BYE 15254-76

2-55

Handle via Byeman/~~Talent Keyhole~~  
Controls Only

~~TOP SECRET~~

AFSPPF HISTORY  
Volume I

CONSTRUCTION OF FOUNDATION FOR COMMUNICATIONS/FILM ENVIRONMENTAL FACILITY

(February 1969)

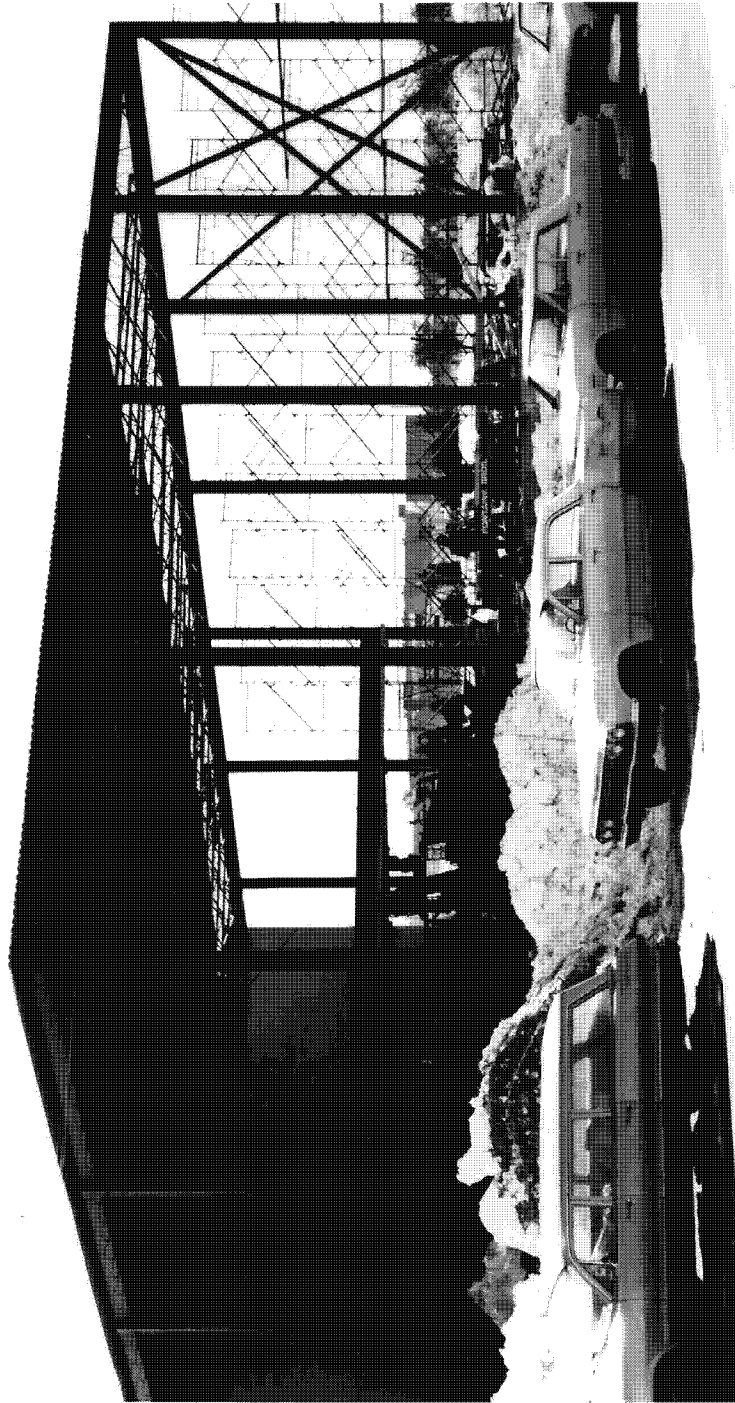


FIGURE 2-26

~~TOP SECRET~~

2-56

BYE 15254-76

Handle via ~~Byeman/Talent/Keyhole~~  
Controls Only

~~TOP SECRET~~

AFSPPF HISTORY  
Volume I

COMPLETED COMMUNICATIONS/FILM ENVIRONMENTAL FACILITY

(May 1969)



FIGURE 2-27

~~TOP SECRET~~

BYE 15254-76

Handle via Byeman/~~Talent - Keyhole~~  
Controls Only

~~TOP SECRET~~

AFSPPF HISTORY  
Volume I

INDUSTRIAL WASTE TREATMENT PLANT UNDER CONSTRUCTION

(June 1973)



FIGURE 2-28

~~TOP SECRET~~

BYE 15254-76

2-60

Handle via ~~Byeman/Talent~~ Keyhole  
Controls Only



~~TOP SECRET~~

AFSPPF HISTORY  
Volume I

COMPLETED INDUSTRIAL WASTE TREATMENT PLANT  
(August 1974)



FIGURE 2-29

~~TOP SECRET~~

BYE 15254-76

Handle via Byeman / ~~Talent - Keyhole~~  
Controls Only

~~TOP SECRET~~

AFSPPF HISTORY  
Volume I

INDUSTRIAL WASTE TREATMENT PLANT EQUIPMENT

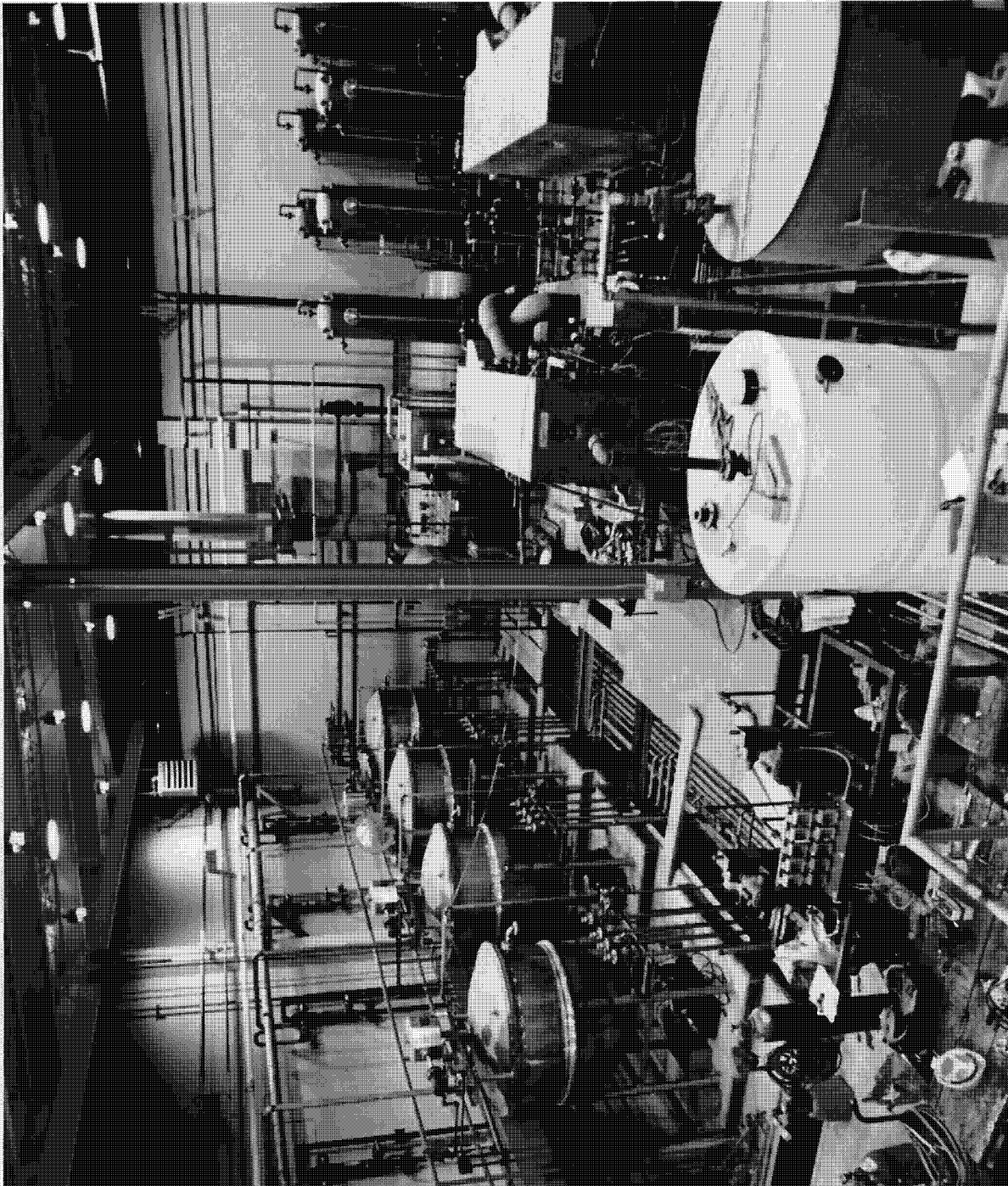


FIGURE 2-30

~~TOP SECRET~~

2-62

BYE 15254-76

Handle via ~~Byeman / Talent / Keyhole~~  
Controls Only

~~TOP SECRET~~

AFSPPF HISTORY  
Volume I

COMPLETED WATER TANK AND PUMP STATION

(June 1973)



FIGURE 2-31

~~TOP SECRET~~

BYE 15254-76

2-64

Handle via ~~Byeman / Talent / Keyhole~~  
Controls Only

~~TOP SECRET~~

AFSPPF HISTORY  
Volume I

CENTRALIZED CONTROL ROOM SHOWING EQUIPMENT AND ENVIRONMENTAL MONITORING PANEL

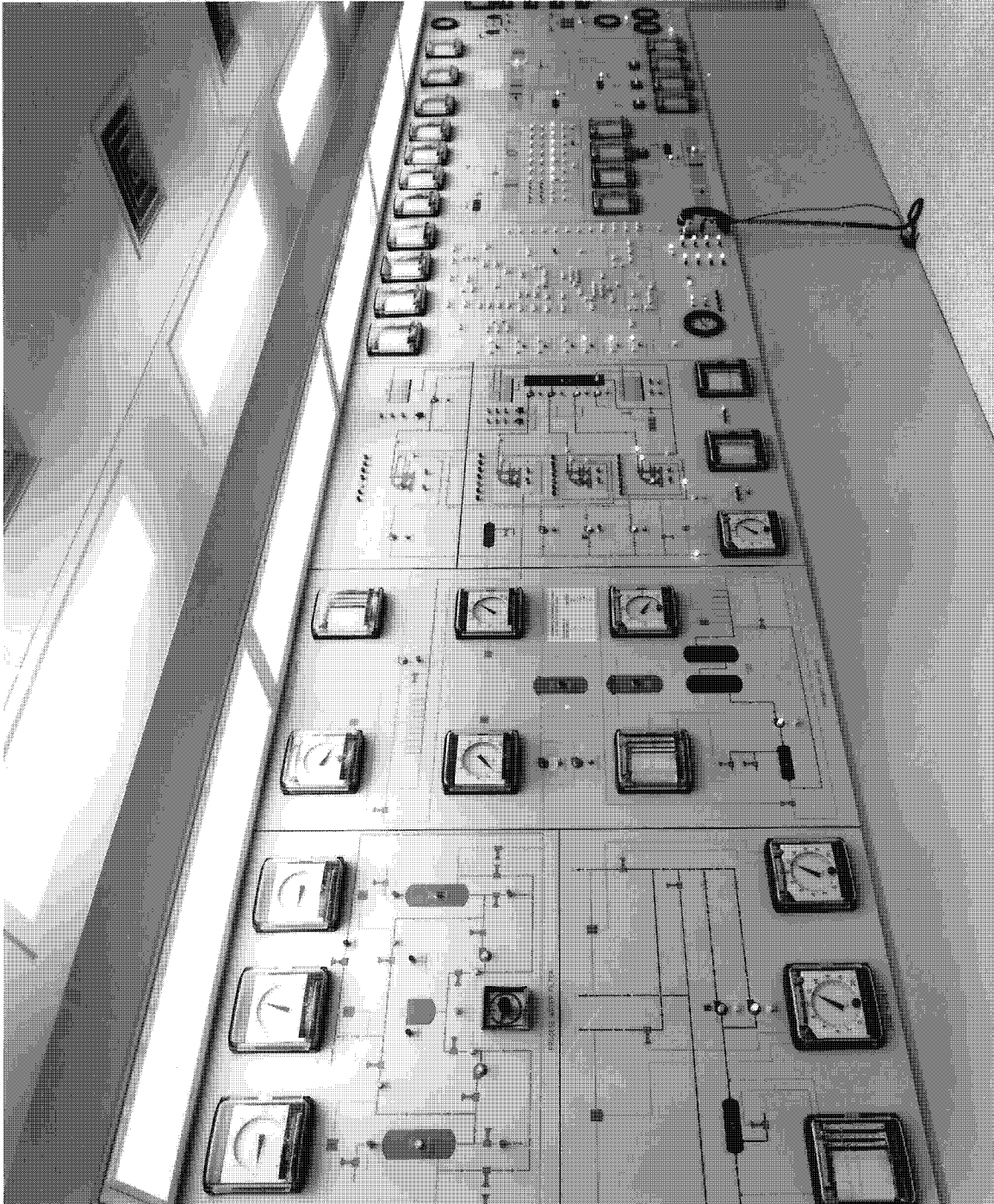


FIGURE 2-32

~~TOP SECRET~~

BYE 15254-76

2-65

Handle via ~~Byeman/Talent~~ Keyhole  
Controls Only

~~TOP SECRET~~

AFSPPF HISTORY  
Volume I

THE OVERSEAS LOGISTICAL SUPPORT PROGRAM

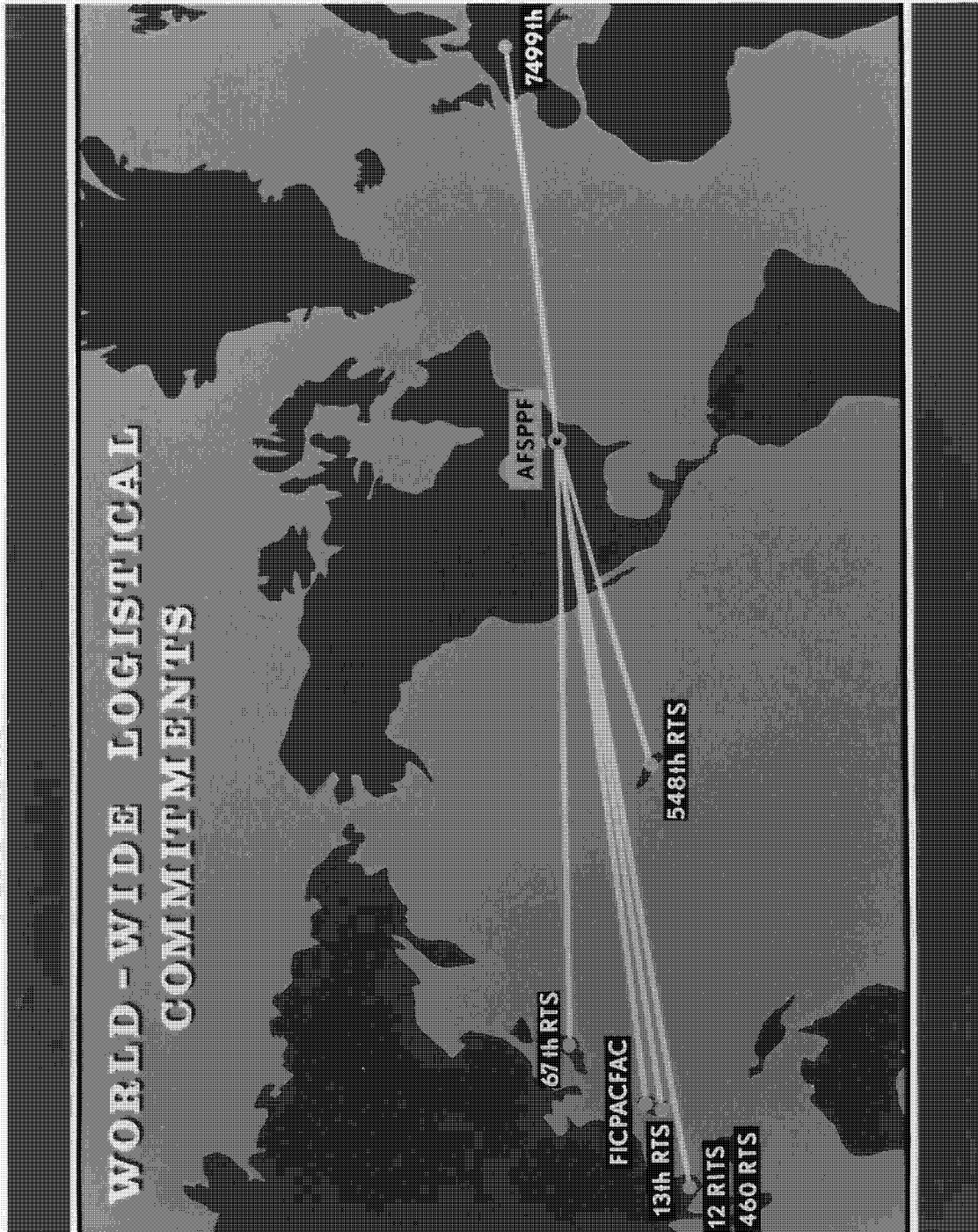


FIGURE 2-33

~~TOP SECRET~~

BYE 15254-76

Handle via Byeman / ~~Talent~~ Keyhole  
Controls Only



~~TOP SECRET~~

AFSPPF HISTORY  
Volume I

PRECISION PHOTO MAINTENANCE TECHNICIANS WORKING ON THE REDONDO PRINTER



FIGURE 2-34

~~TOP SECRET~~

2-77

BYE 15254-76

Handle via ~~Byeman/Talent~~ Keyhole  
Controls Only

~~TOP SECRET~~

AFSPPF HISTORY  
Volume I

AN ELECTRONIC DIGITAL REPAIRMAN WORKING ON THE QUANTISCAN DENSITOMETER



FIGURE 2-35

~~TOP SECRET~~

2-79

BYE 15254-76

Handle via ~~Byeman/Talent~~ Keyhole  
Controls Only

~~TOP SECRET~~

AFSPPF HISTORY  
Volume I

FILM BEING STOCKED IN P-1900 COLD STORAGE WAREHOUSE

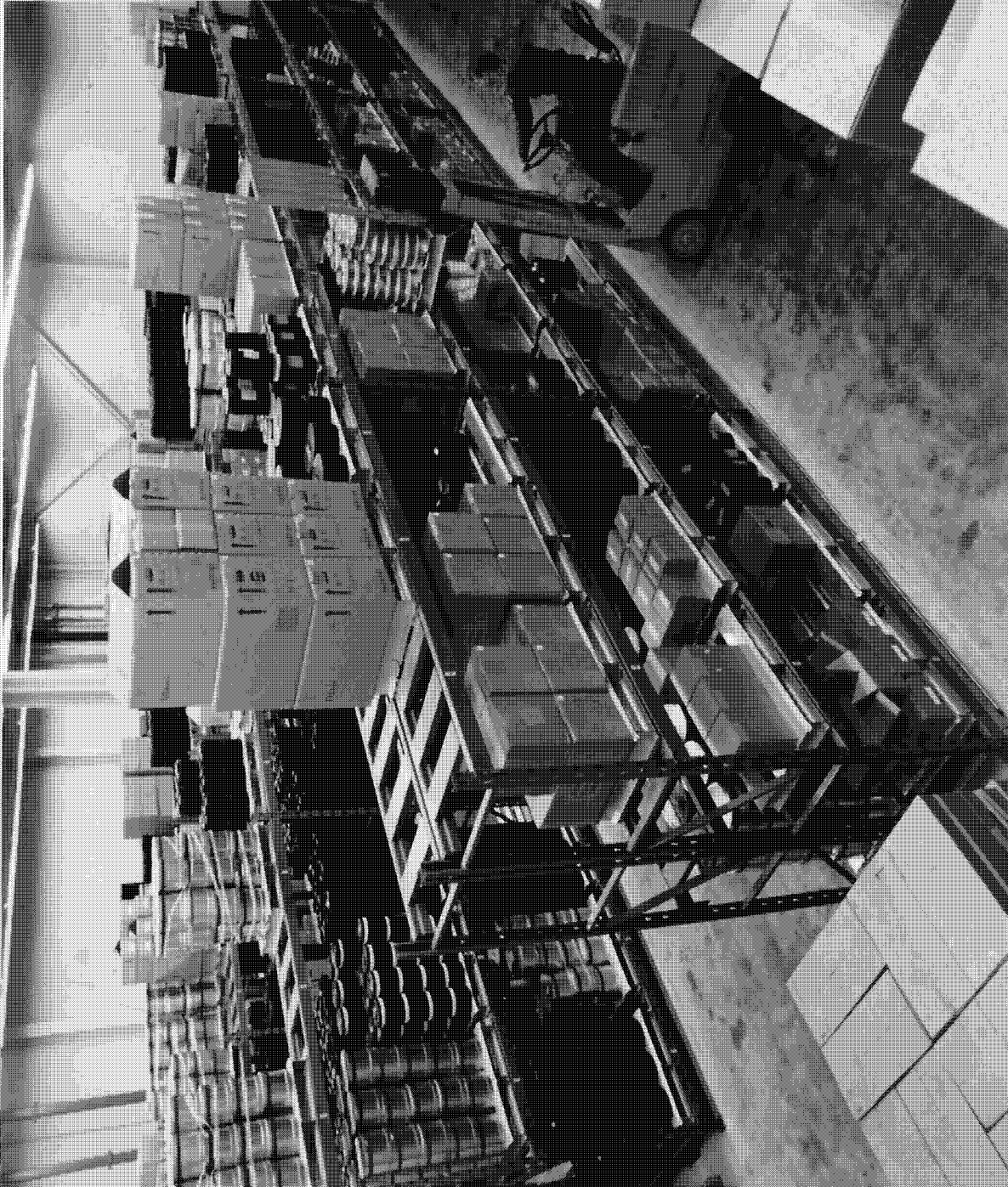


FIGURE 2-36

~~TOP SECRET~~

BYE 15254-76

2-80

Handle via ~~Byeman/Talent~~ Keyhole  
Controls Only

~~TOP SECRET~~

AFSPPF HISTORY  
Volume I

CHEMICAL SUPPLIES FROM NOSEDOCK 5 WAREHOUSE  
BEING READIED FOR TRANSPORTATION TO AFSPPF

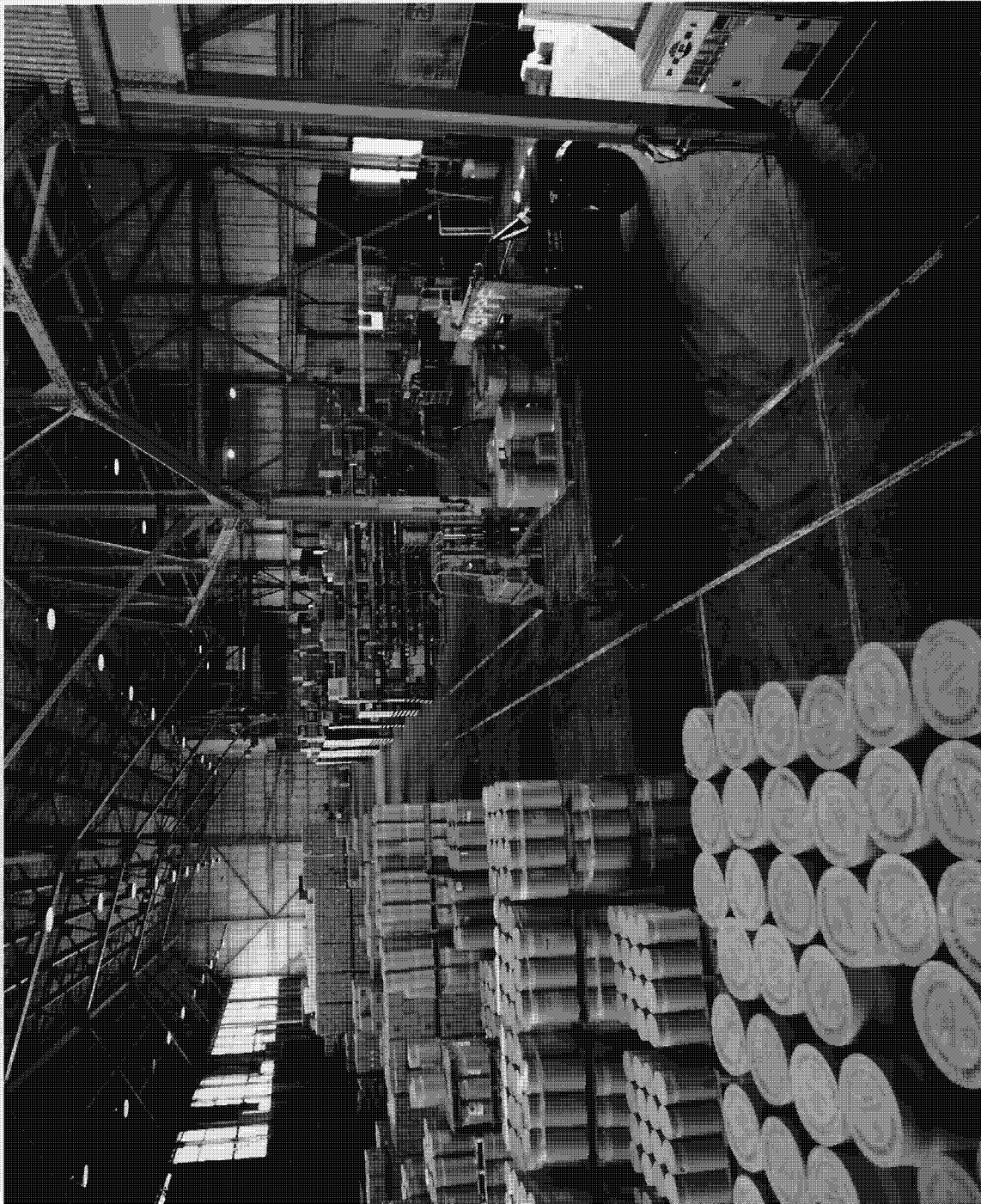


FIGURE 2-37

~~TOP SECRET~~

2-81

BYE 15254-76

Handle via ~~Byeman/Talent~~ Keyhole  
Controls Only

~~TOP SECRET~~

AFSPPF HISTORY  
Volume I

TYPICAL MOBILE TARGET ARRAY IN 1964 - 1965  
(Variable Aspect Ratio Tribar, 51/51 Tribar, Bullseye, 200 Foot Edge, and Tri-Color Targets)



FIGURE 2-38

~~TOP SECRET~~

BYE 15254-76

Handle via Byeman/~~Talent - Keyhole~~  
Controls Only



~~TOP SECRET~~

AFSPPF HISTORY  
Volume I

TECHNICAL ANALYSIS BRANCH STAFF MEETING IN 1964

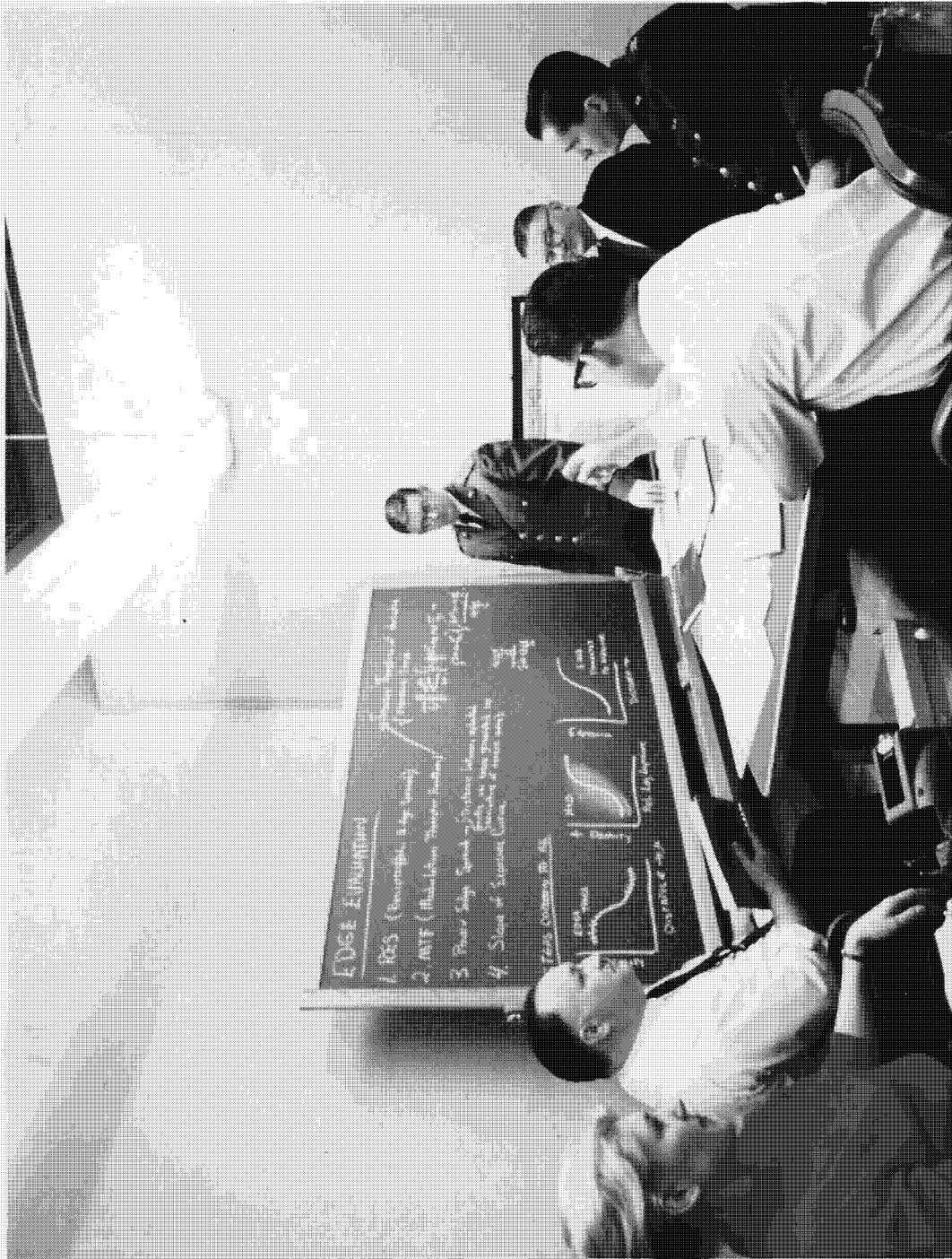


FIGURE 2-39

~~TOP SECRET~~

BYE 15254-76

Handle via ~~Byeman/Talent~~ Keyhole  
Controls Only

~~TOP SECRET~~

AFSPPF HISTORY  
Volume I

USE OF THE DENSITY AUTOMATIC RECORDING SYSTEM ON MISSION 1051



FIGURE 2-40

~~TOP SECRET~~

2-97

BYE 15254-76

Handle via Byeman/Talent - Keyhole  
Controls Only

~~TOP SECRET~~

AFSPPF HISTORY  
Volume I

A TECHNICIAN OPERATING THE MODEL 1050 PDS MICRODENSITOMETER



FIGURE 2-41

~~TOP SECRET~~

BYE 15254-76

Handle via Byeman/Talent/Keyhole  
Controls Only

~~TOP SECRET~~

AFSPPF HISTORY  
Volume I

ACCEPTANCE TEAM MEETING ON SERIAL NUMBER 3 (SN-003)



FIGURE 2-42

~~TOP SECRET~~

2-101

BYE 15254-76

Handle via Byeman/Talent/Keyhole  
Controls Only

~~TOP SECRET~~

AFSPPF HISTORY  
Volume I

OPTICAL POWER SPECTRUM ANALYZER (OPSA)

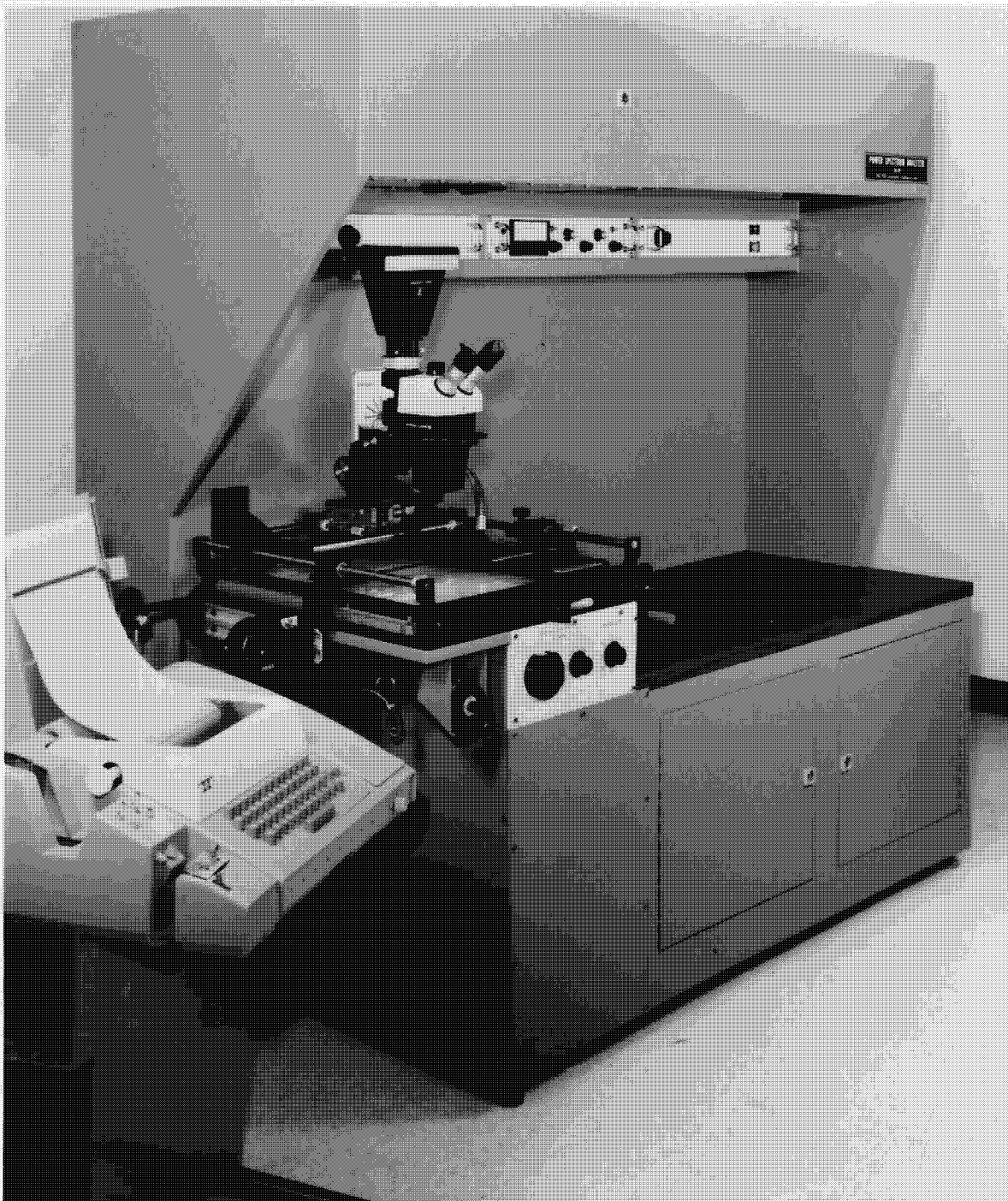


FIGURE 2-43

~~TOP SECRET~~

2-104

BYE 15254-76

Handle via Byeman/~~Talent - Keyhole~~  
Controls Only



~~TOP SECRET~~

AFSPPF HISTORY  
Volume I

IBM 360/30 COMPUTER SYSTEM



FIGURE 2-44

~~TOP SECRET~~

BYE 15254-76

Handle via ~~Byeman / Talent - Keyhole~~  
Controls Only

~~TOP SECRET~~

AFSPPF HISTORY  
Volume I

IBM 360/40 COMPUTER SYSTEM

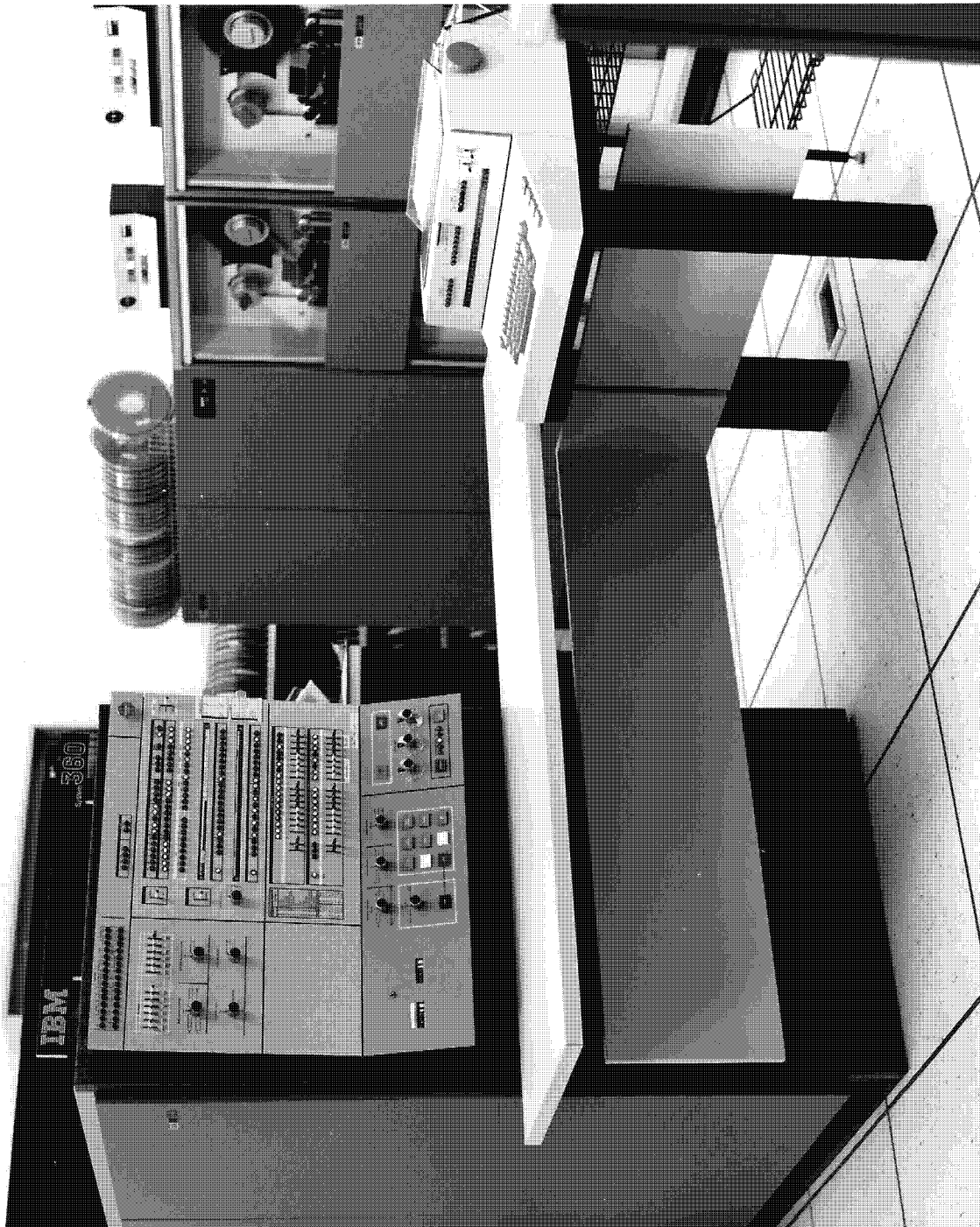


FIGURE 2-45

~~TOP SECRET~~

2-111

BYE 15254-76

Handle via Byeman/Talent - Keyhole  
Controls Only

~~TOP SECRET~~

AFSPPF HISTORY  
Volume I

TECHNICAL REPORTS DIVISION MISSION DISPLAY BOARD

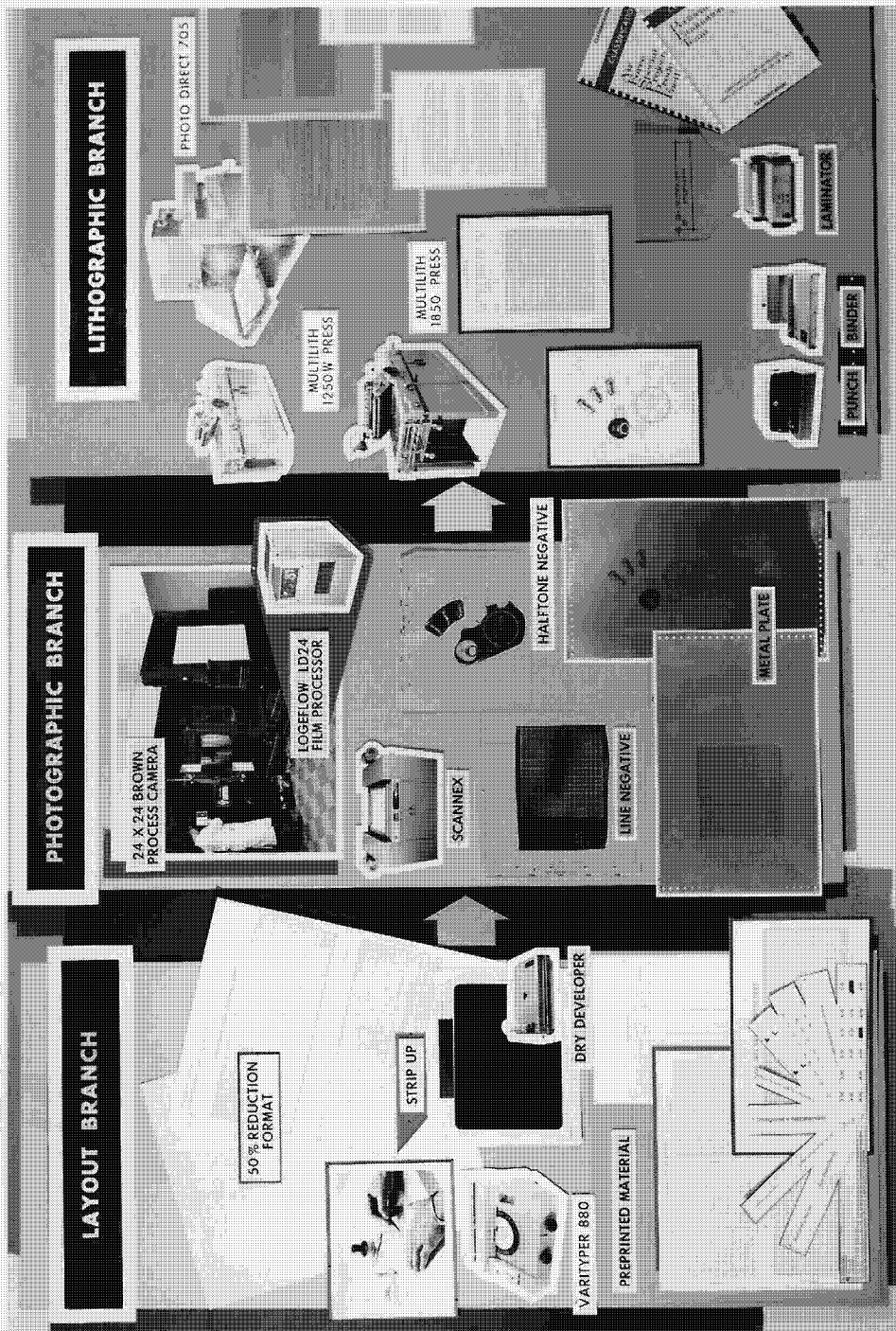


FIGURE 2-46

~~TOP SECRET~~

BYE 15254-76

Handle via ~~Byeman / Talent - Keyhole~~

Controls Only

~~TOP SECRET~~

AFSPPF HISTORY  
Volume I

THE A&M 805 ELECTROSTATIC MASTER IMAGER



FIGURE 2-47

~~TOP SECRET~~

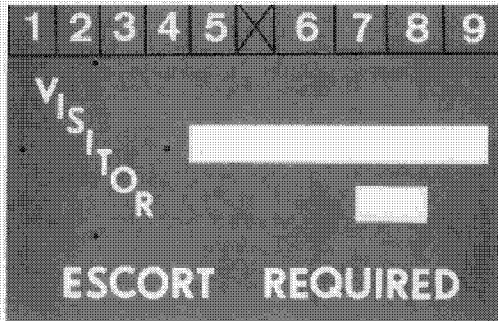
BYE 15254-76

Handle via ~~Byeman/Talent - Keyhole~~  
Controls Only

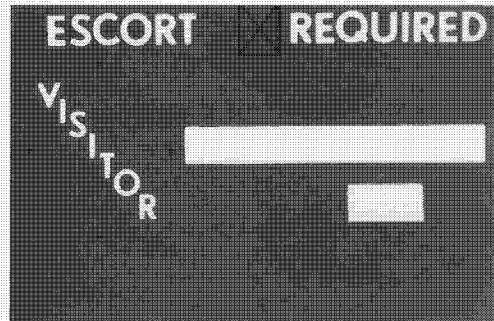
~~TOP SECRET~~

AFSPPF HISTORY  
Volume I

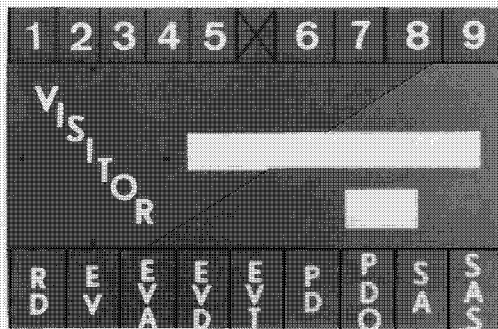
CONTROL BADGE SYSTEM



"B" Access



"TK" Access



"TK"/"B" Access



Escort Required

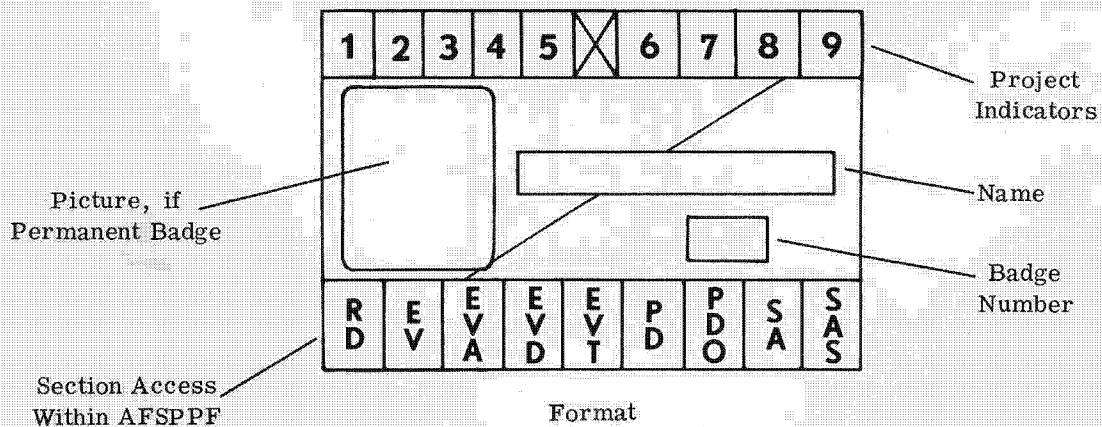


FIGURE 3-1

~~TOP SECRET~~

BYE 15254-76

Handle via Byeman/Talent Keyhole  
Controls Only



~~TOP SECRET~~

AFSPPF HISTORY  
Volume I

INCINERATOR WITH THE SCRUBBER UNIT AND CONTROL PANEL

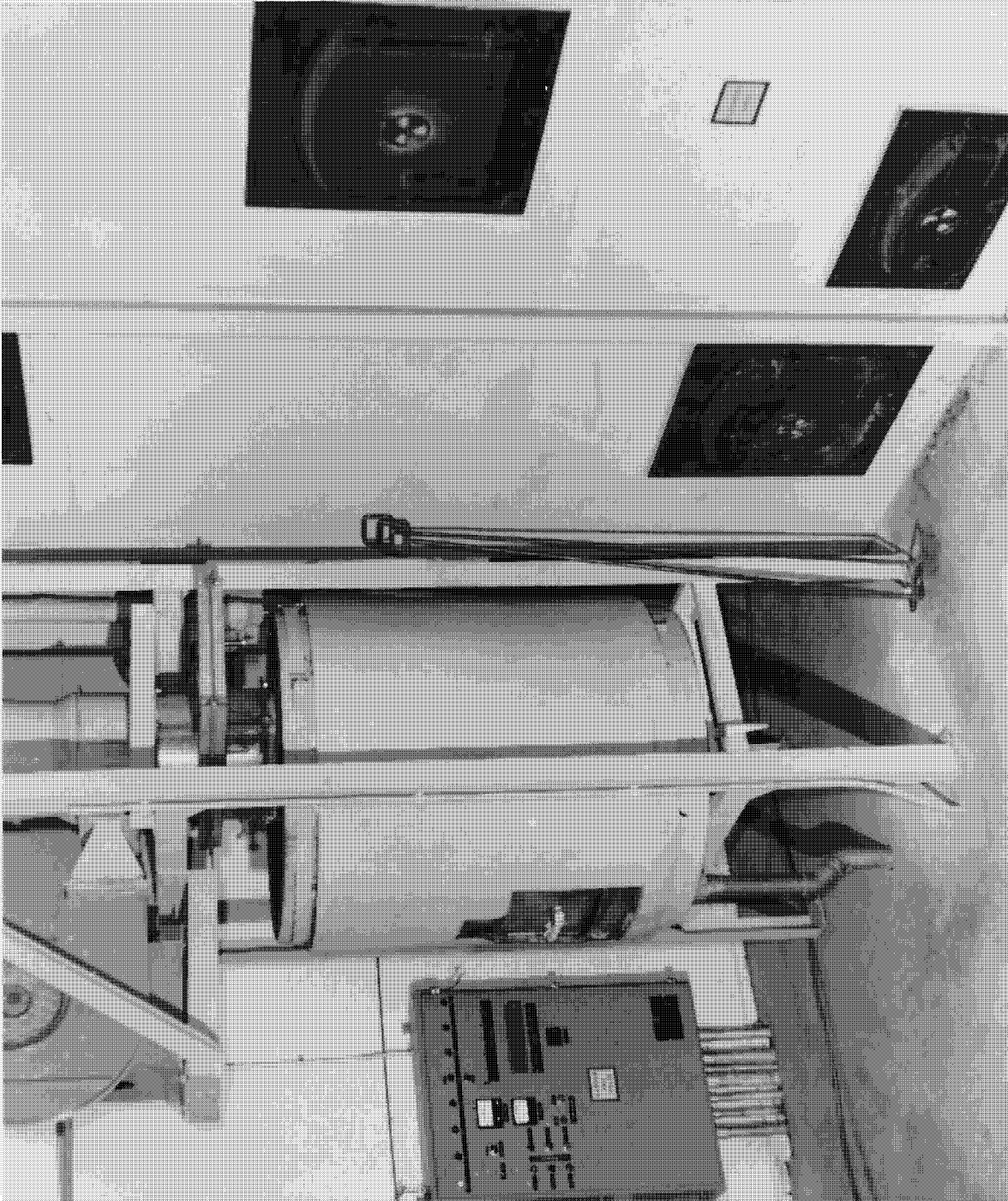


FIGURE 3-2

~~TOP SECRET~~

BYE 15254-76

Handle via ~~Byeman/Talent/Keyhole~~  
Controls Only

~~TOP SECRET~~

AFSPPF HISTORY  
Volume I

THE INCINERATOR IN OPERATION



FIGURE 3-3

~~TOP SECRET~~

BYE 15254-76

Handle via ~~Byeman/Talent~~ Keyhole  
Controls Only

~~TOP SECRET~~

AFSPPF HISTORY  
Volume I

EQUIPMENT WITHIN THE COMMUNICATIONS CENTER  
(January 1970)



FIGURE 3-4

~~TOP SECRET~~

BYE 15254-76

Handle via ~~Byeman/Talent/Keyhole~~  
Controls Only

~~TOP SECRET~~

AFSPPF HISTORY  
Volume I



(b)(1)  
(b)(3)

FIGURE 3-5

~~TOP SECRET~~

BYE 15254-76

Handle via ~~Byeman/Talent~~ Keyhole  
Controls Only

~~TOP SECRET~~

AFSPPF HISTORY  
Volume I

CONVEYOR SYSTEM ENTRANCE FROM PHOTO LABORATORY QUALITY CONTROL SECTION



FIGURE 3-6

~~TOP SECRET~~

3-22

BYE 15254-76

Handle via ~~Byeman/Talent~~ Keyhole  
Controls Only



~~TOP SECRET~~

AFSPPF HISTORY  
Volume I

CONVEYOR SYSTEM RECEIPT AREA IN SHIPPING ACTIVITIES SECTION



FIGURE 3-7

~~TOP SECRET~~

BYE 15254-76

Handle via ~~Byeman / Talent - Keyhole~~  
Controls Only

~~TOP SECRET~~

AFSPPF HISTORY  
Volume I

PACKING AND CONTROLLING MATERIAL FOR SHIPMENT



FIGURE 3-8

~~TOP SECRET~~

3-25

BYE 15254-76

Handle via Byeman/~~Talent - Keyhole~~  
Controls Only

~~TOP SECRET~~

AFSPPF HISTORY  
Volume I

NER STORAGE IN NOSEDOCK 7, BUILDING 7504



FIGURE 4-4

~~TOP SECRET~~

BYE 15254-76

Handle via ~~Byeman/Talbot~~ Keyhole  
Controls Only

~~TOP SECRET~~

AFSPPF HISTORY  
Volume I

ION EXCHANGE SILVER RECOVERY SYSTEM

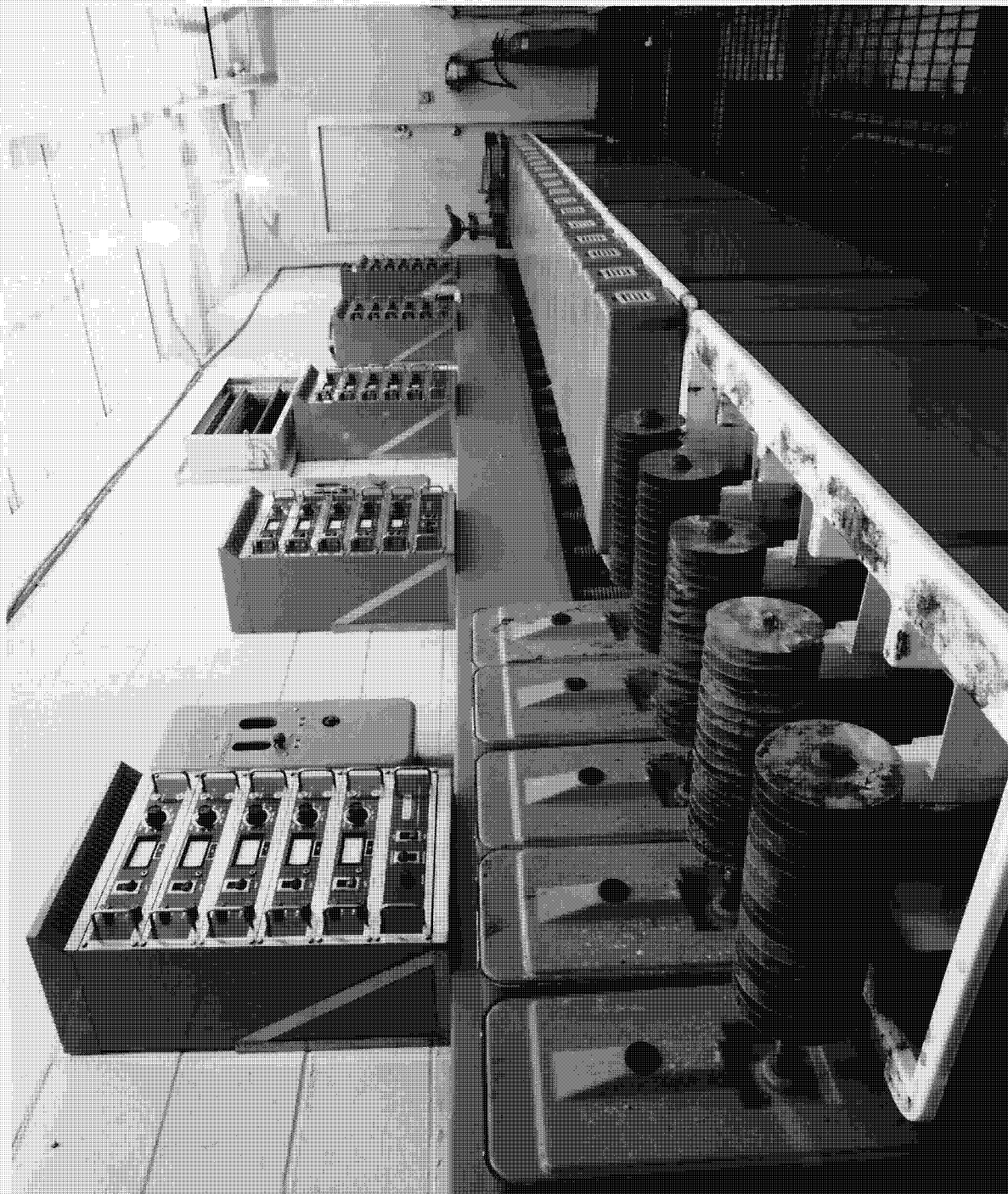


FIGURE 4-5

~~TOP SECRET~~

BYE 15254-76

Handle via ~~Byeman/Talent~~ Keyhole  
Controls Only

~~TOP SECRET~~

AFSPPF HISTORY  
Volume I

BLO HOG MULCHER

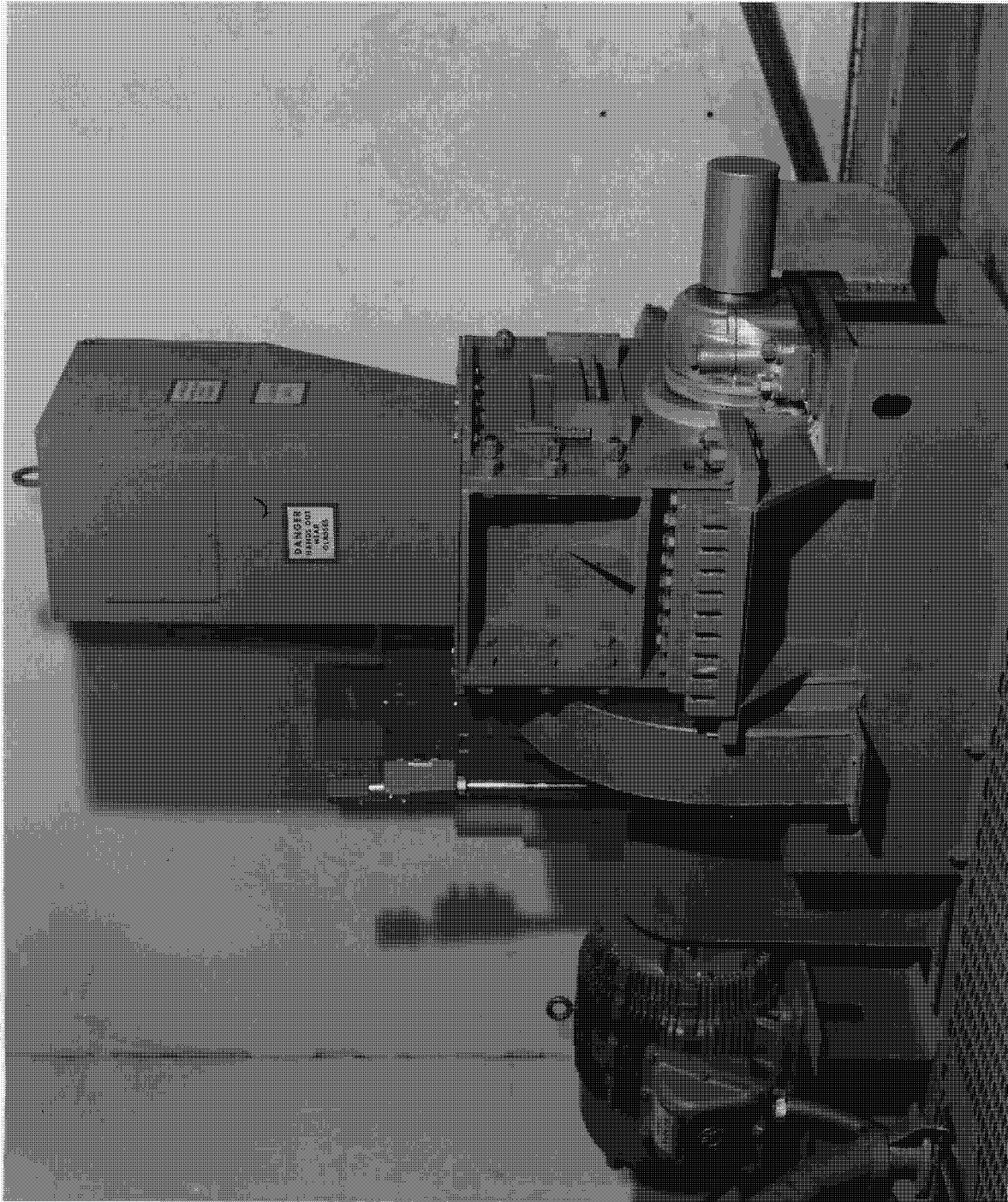


FIGURE 4-6

~~TOP SECRET~~

BYE 15254-76

Handle via Byeman / Talent - Keyhole  
Controls Only



~~TOP SECRET~~

AFSPPF HISTORY  
Volume I

ELECTROLYTIC SILVER RECOVERY AND HYPO CONSERVATION SYSTEM



FIGURE 4-7

~~TOP SECRET~~

BYE 15254-76

Handle via ~~Byeman/Talent~~ Keyhole  
Controls Only

~~TOP SECRET~~

AFSPPF HISTORY  
Volume I

RESULTS OF TESTING FEASIBILITY OF PROCESSING  
VISCOUS DEVELOPER WASTE THROUGH A VAPOR COMPRESSION EVAPORATOR  
(19 November 1974)

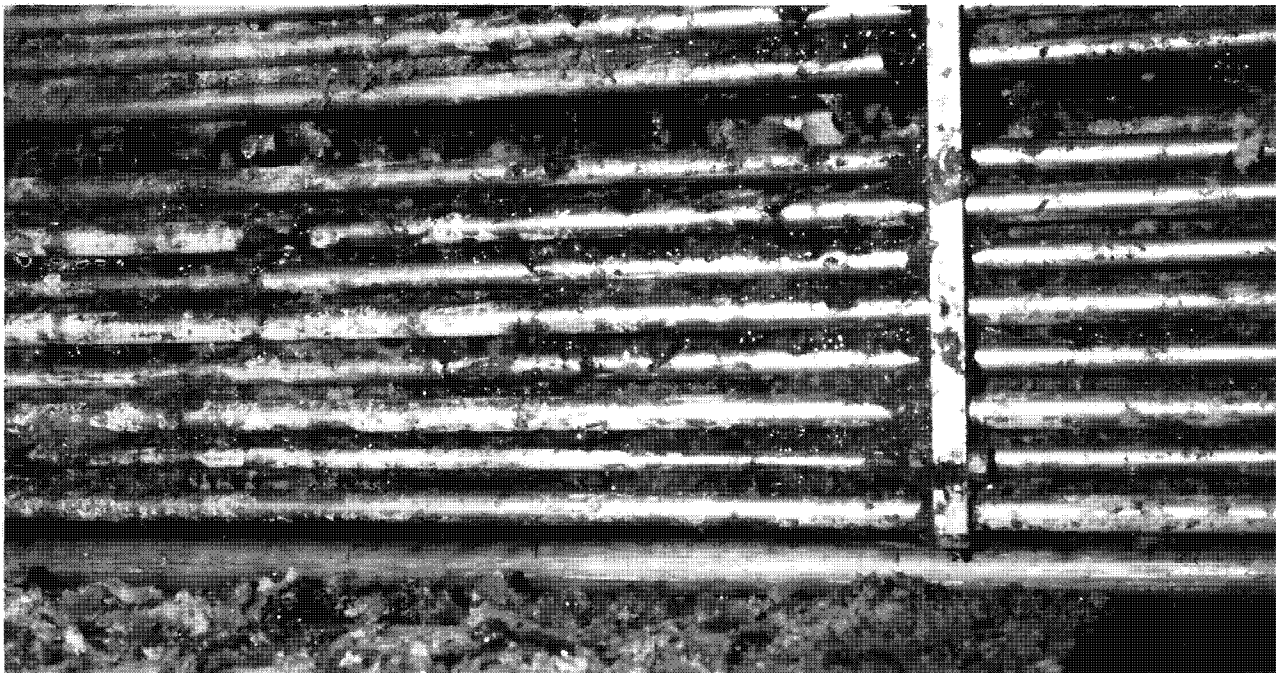
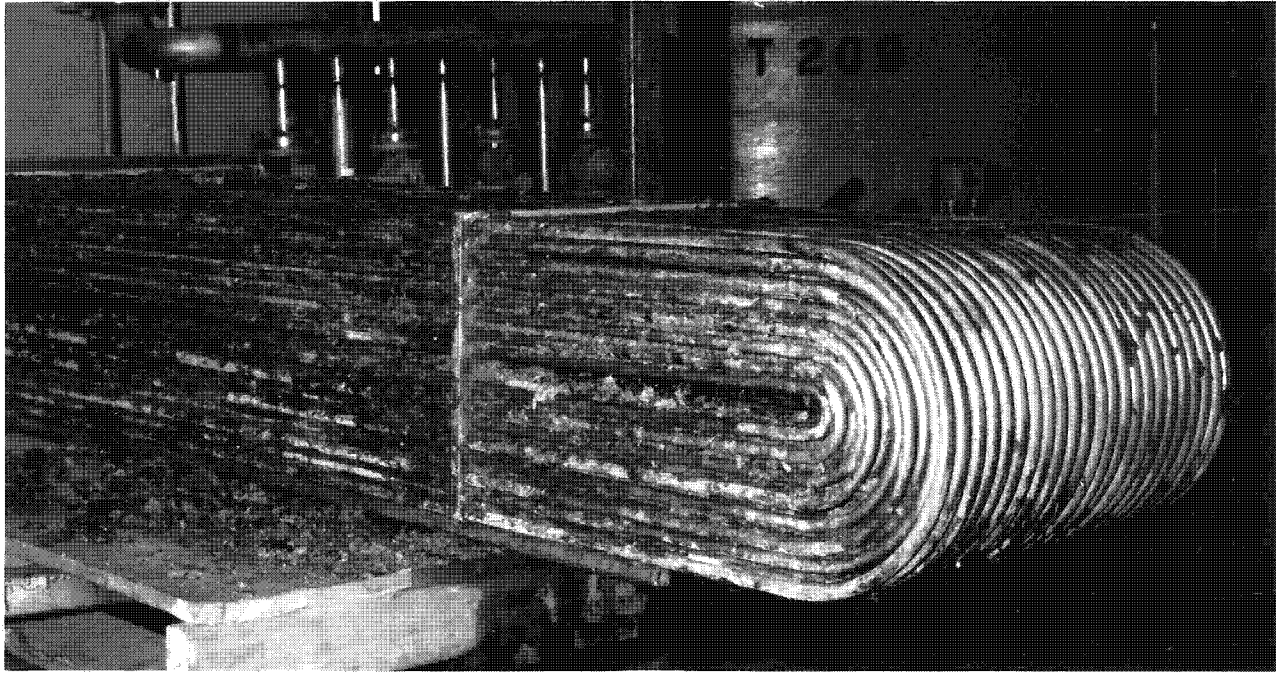


FIGURE 4-8

~~TOP SECRET~~

BYE 15254-76

Handle via ~~Byeman/Talent/Keyhole~~  
Controls Only

~~TOP SECRET~~

AFSPPF HISTORY  
Volume I

IBM 1130 COMPUTER SYSTEM



FIGURE 4-9

~~TOP SECRET~~

BYE 15254-76

Handle via ~~Byeman / Talent - Keyhole~~  
Controls Only

~~TOP SECRET~~

AFSPPF HISTORY  
Volume I

IBM 1800 DATA ACQUISITION AND CONTROL SYSTEM



FIGURE 4-10

~~TOP SECRET~~

BYE 15254-76

Handle via Byeman / ~~Talent Keyhole~~  
Controls Only

~~TOP SECRET~~

AFSPPF HISTORY  
Volume I

PDP-11/40 PRODUCTION CONTROL SYSTEM

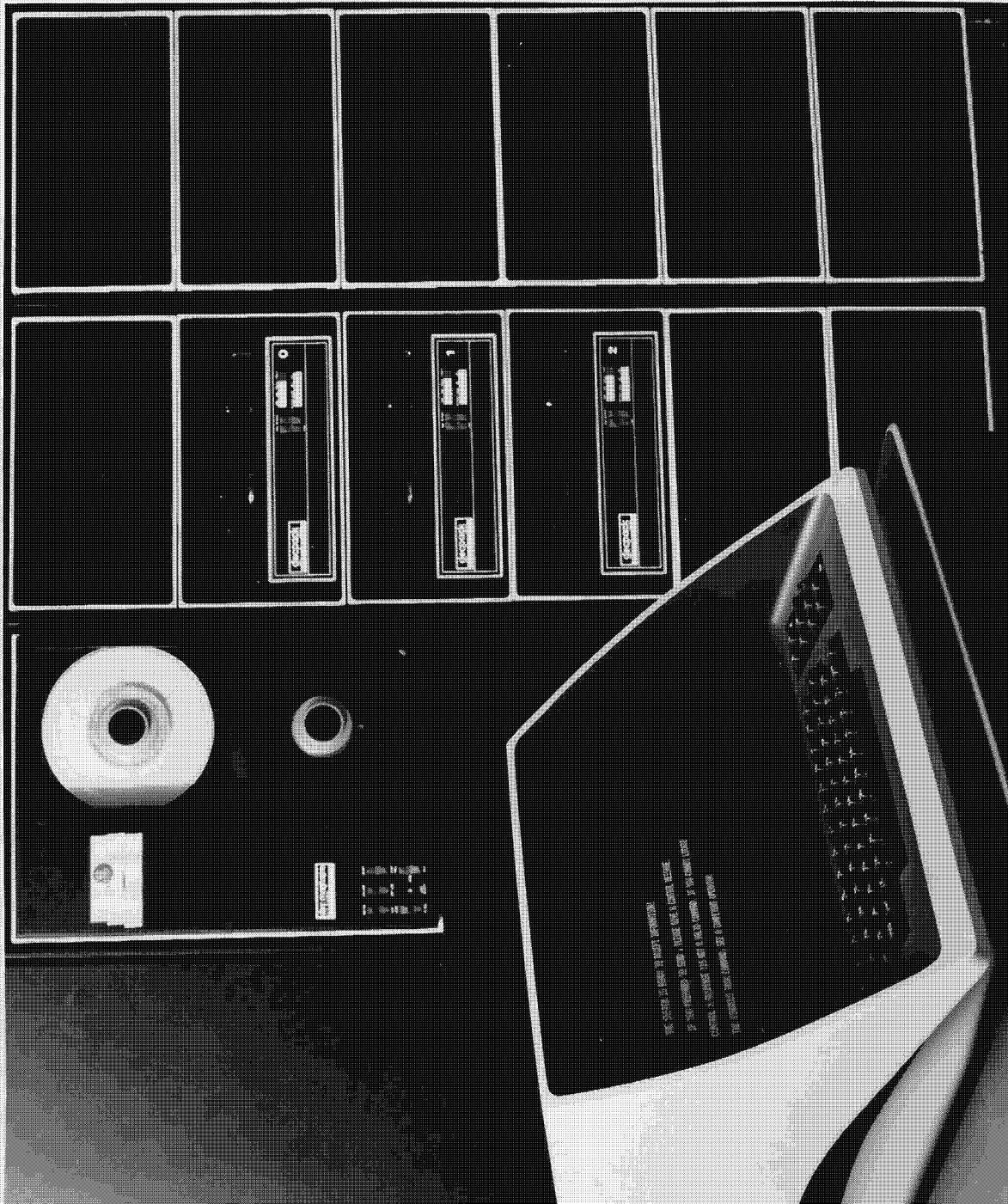


FIGURE 4-11

~~TOP SECRET~~

BYE 15254-76

Handle via Byeman/Talent/Keyhole  
Controls Only



~~TOP SECRET~~

AFSPPF HISTORY  
Volume I

THE ADVANCED MICROCAMERA SYSTEM



FIGURE 4-13

~~TOP SECRET~~

BYE 15254-76

4-36

Handle via Byeman/~~Talent Keyhole~~  
Controls Only

~~TOP SECRET~~

AFSPPF HISTORY  
Volume I

AUTOMATIC COMPOSITING STEP AND REPEAT (ACSAR) PRINTER

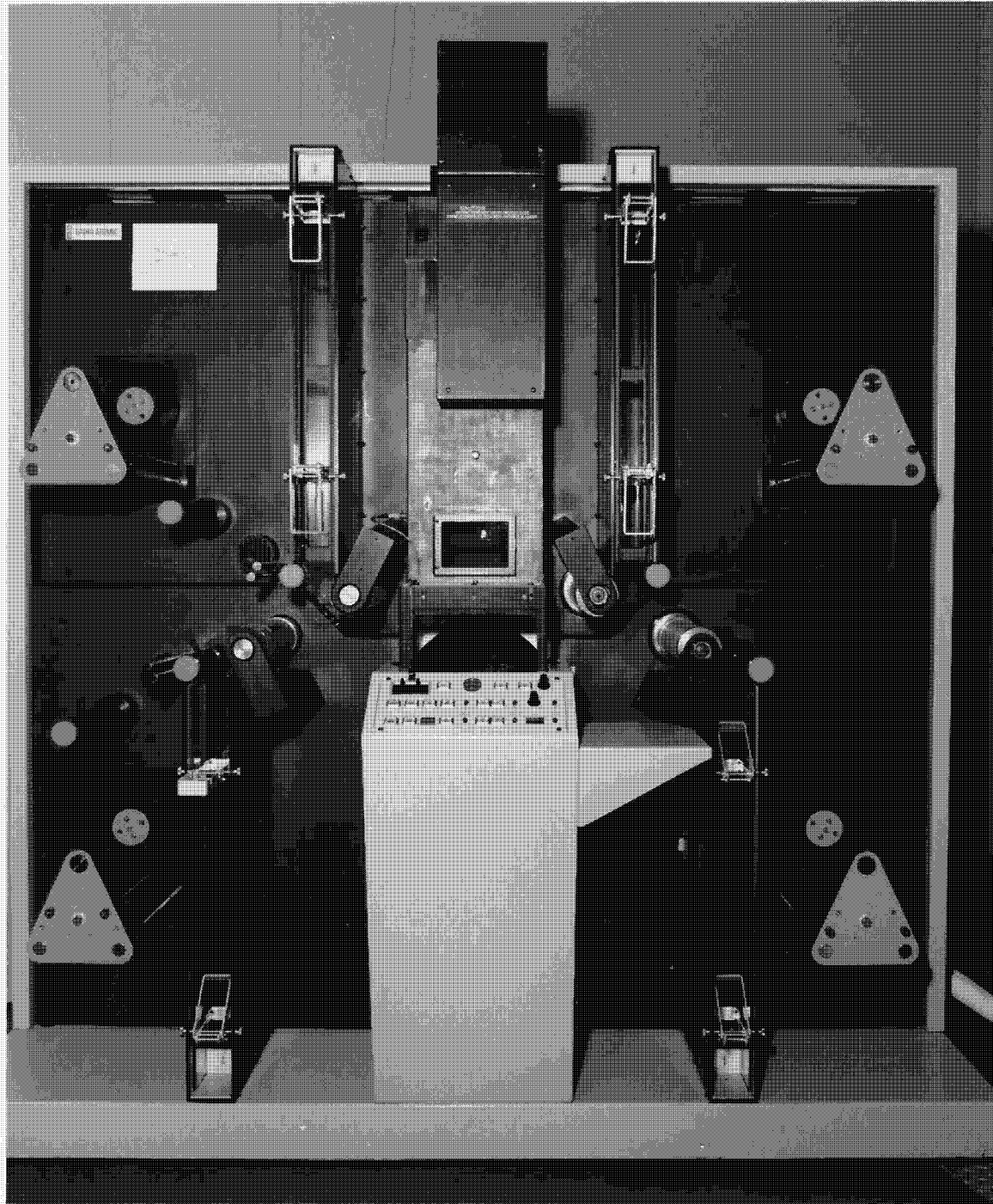


FIGURE 4-14

~~TOP SECRET~~

BYE 15254-76

Handle via ~~Byeman/Talent~~ Keynote  
Controls Only

~~TOP SECRET~~

AFSPPF HISTORY  
Volume I

THE FIRST MANN-DATA MICRODENSITOMETER, MODEL 1032

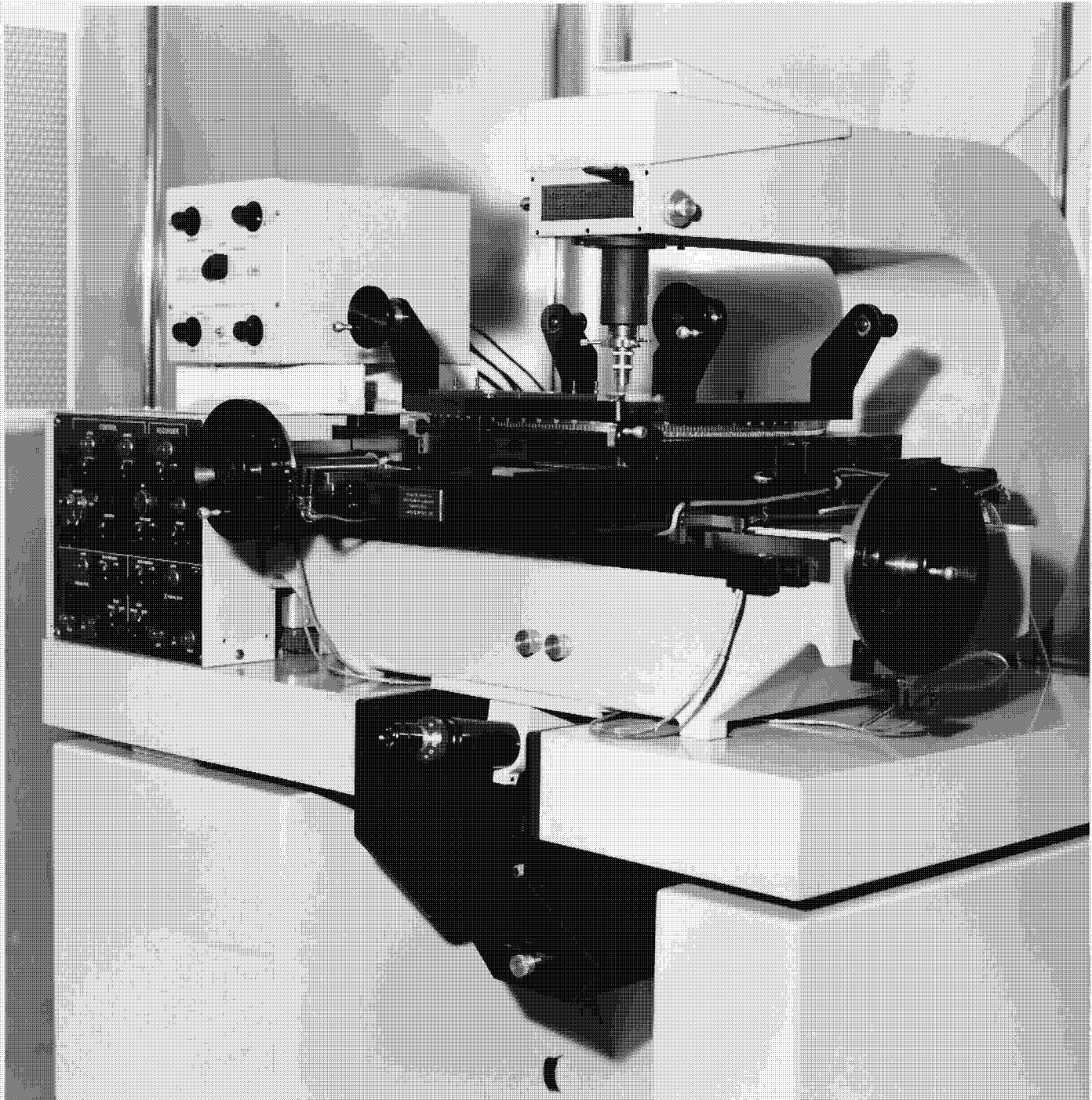


FIGURE 4-15

~~TOP SECRET~~

4-48

BYE 15254-76

Handle via ~~Byeman/Talent~~ Keyhole  
Controls Only

~~TOP SECRET~~

AFSPPF HISTORY  
Volume I

MANN-DATA MICRODENSITOMETER, MODEL 1140



FIGURE 4-16

~~TOP SECRET~~

BYE 15254-76

Handle via ~~Byeman / Talent - Keyhole~~  
Controls Only

~~TOP SECRET~~

AFSPPF HISTORY  
Volume I

THE NEW GENERATION MICRODENSITOMETER (NGM)

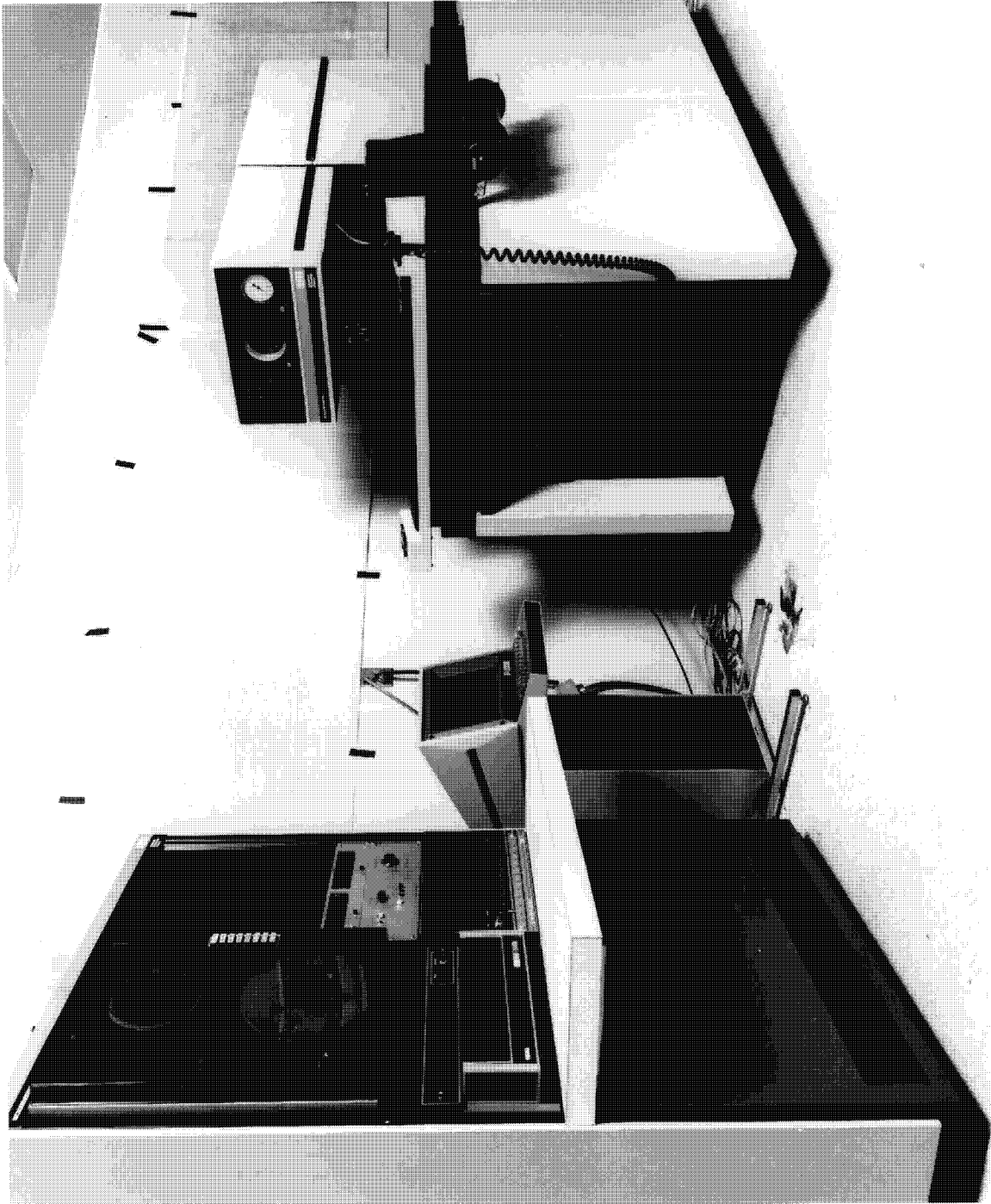


FIGURE 4-17

~~TOP SECRET~~

BYE 15254-76

Handle via Byeman/Talent/Keyhole  
Controls Only



~~TOP SECRET~~

AFSPPF HISTORY  
Volume I

TYPICAL MOBILE TARGET ARRAY IN 1966

(Edge, Gray Scale, Tri-Color, Point Source, and 51/51 Tribar Targets)

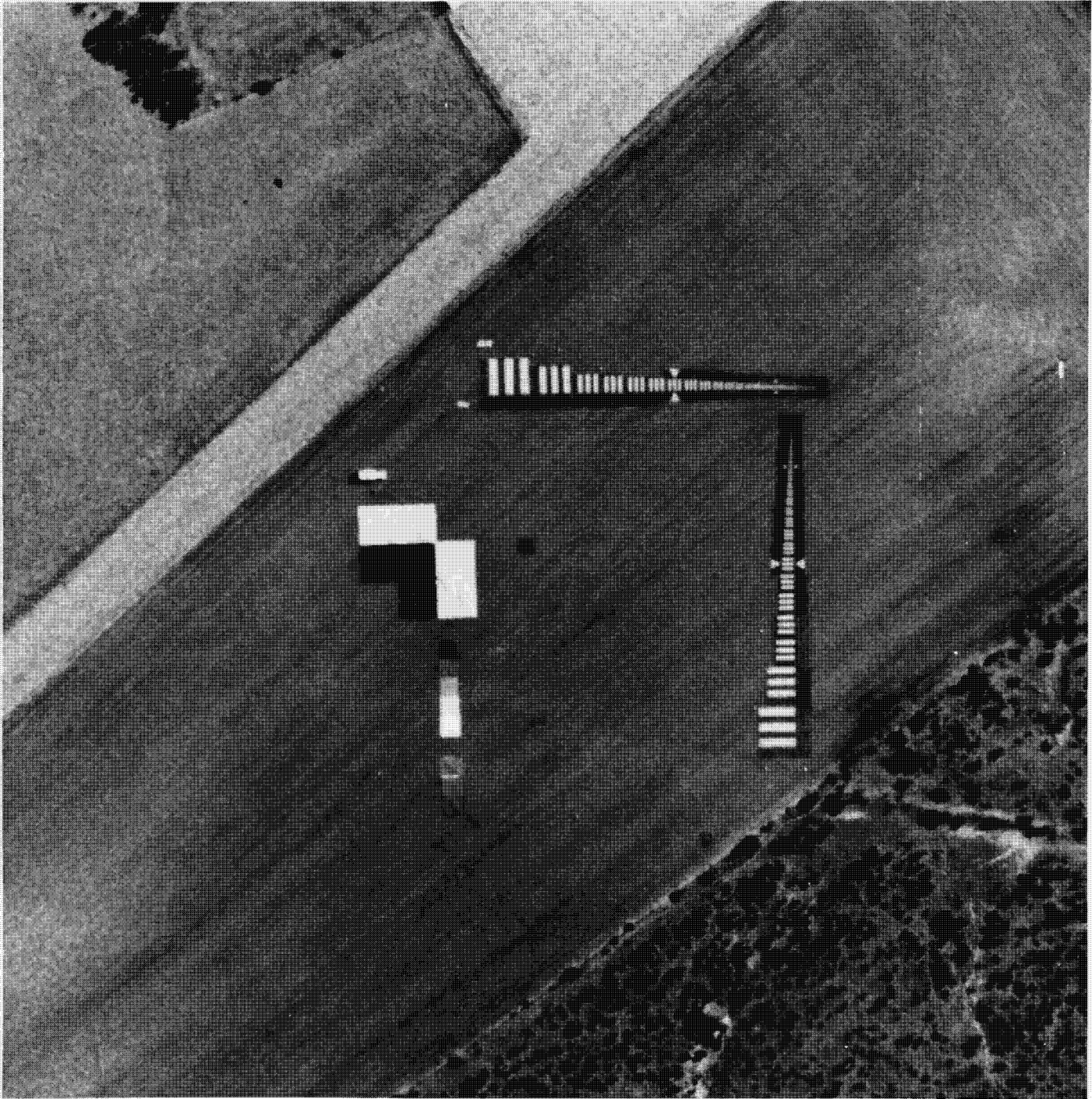


FIGURE 4-18

~~TOP SECRET~~

4-59

BYE 15254-76

Handle via ~~Byeman / Talent - Keyhole~~  
Controls Only

~~TOP SECRET~~

AFSPPF HISTORY  
Volume I

CORN DISPLAY ON MISSION 4337

(Tri-Color, Point Source, Five-Step Gray Scale, 51/51 Tribar, Vernier Tribar,  
80 Foot Edge, and 3 Inch Reversible Line Targets)



(b)(1)

FIGURE 4-19

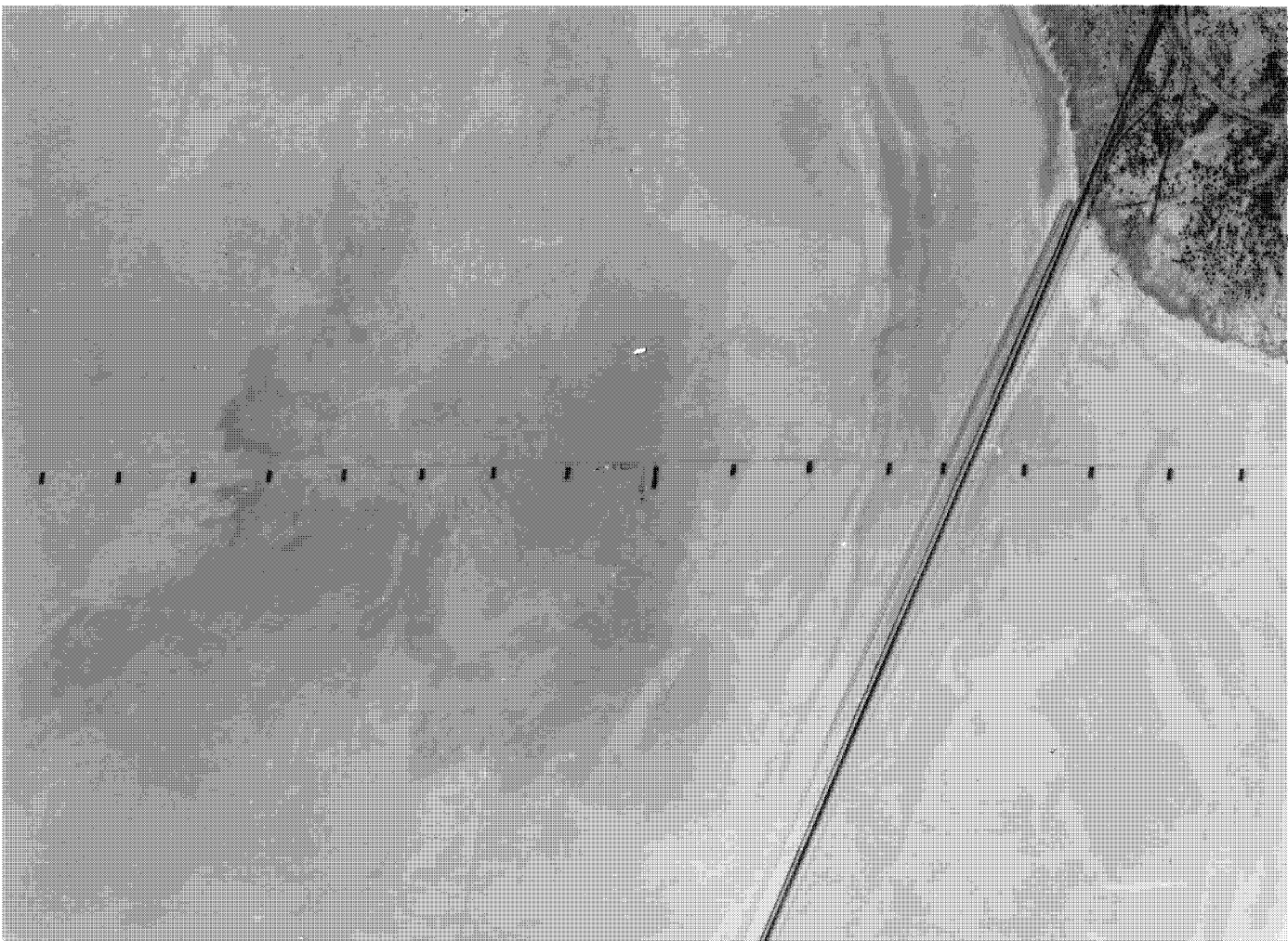
~~TOP SECRET~~

BYE 15254-76

Handle via Byeman / ~~Talent - Keyhole~~  
Controls Only

~~TOP SECRET~~

CROSS-TRACK LINE ARRAY FROM MISSION 1202



**NOTE:** There were 17 RLTs displayed 2,000 feet apart. A Gray Scale and 51/51 Tribar Target were also deployed for ground truth and contrast data. This experiment was for determining cross-track film velocity errors at various scan angles.

FIGURE 4-23

~~TOP SECRET~~

4-67

BYE 15254-76

Handle via Byeman / ~~Talent Keyhole~~  
Controls Only

~~TOP SECRET~~

AFSPPF HISTORY  
Volume I

CORN DISPLAY FOR RED DOT PROGRAM

(51/51 Tribar, Six-Step Color, Five-Step Gray Scale, Point Source, and Log Periodic Targets)

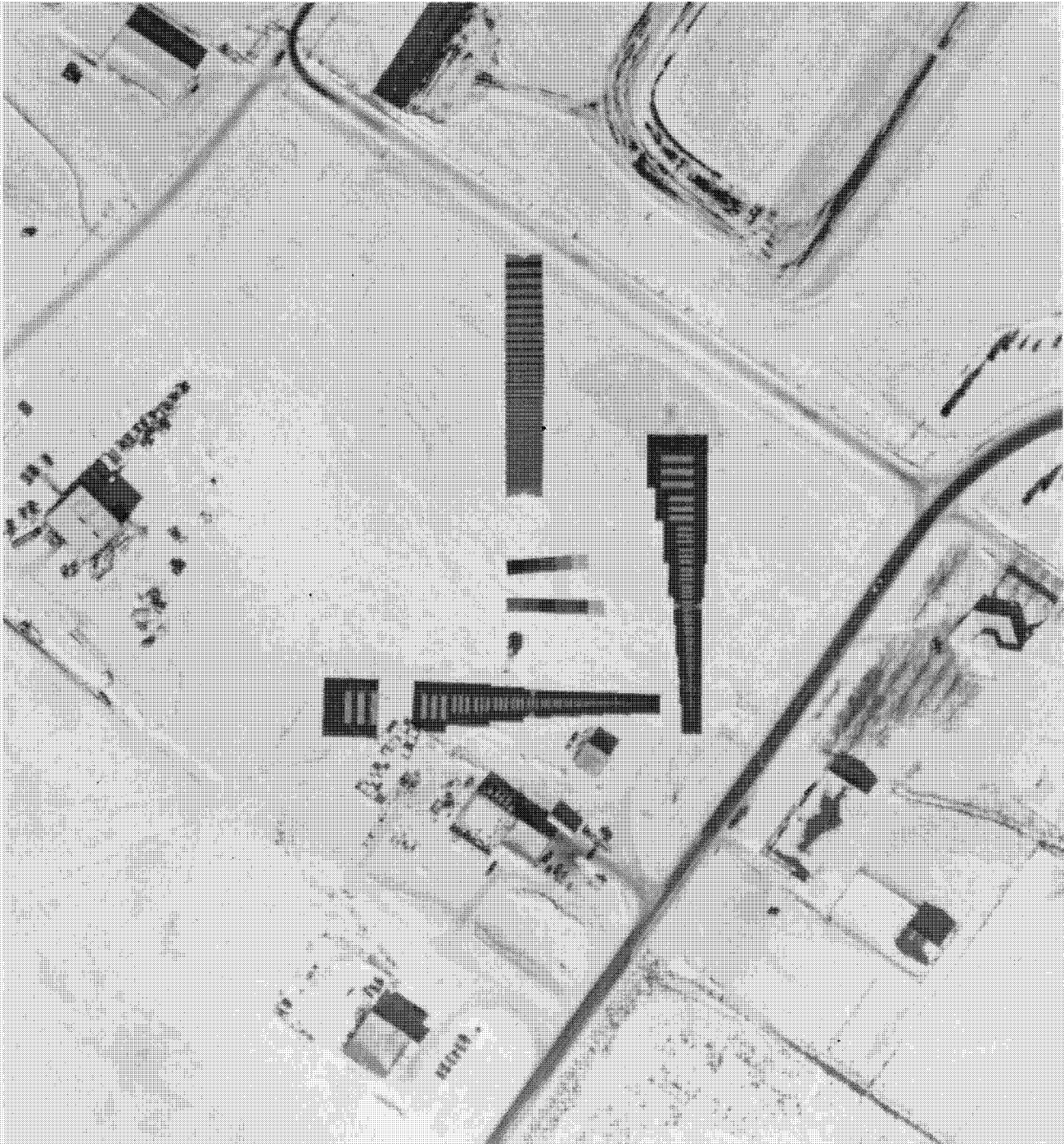


FIGURE 4-24

~~TOP SECRET~~

BYE 15254-76

Handle via Byeman/~~Talent Keyhole~~  
Controls Only