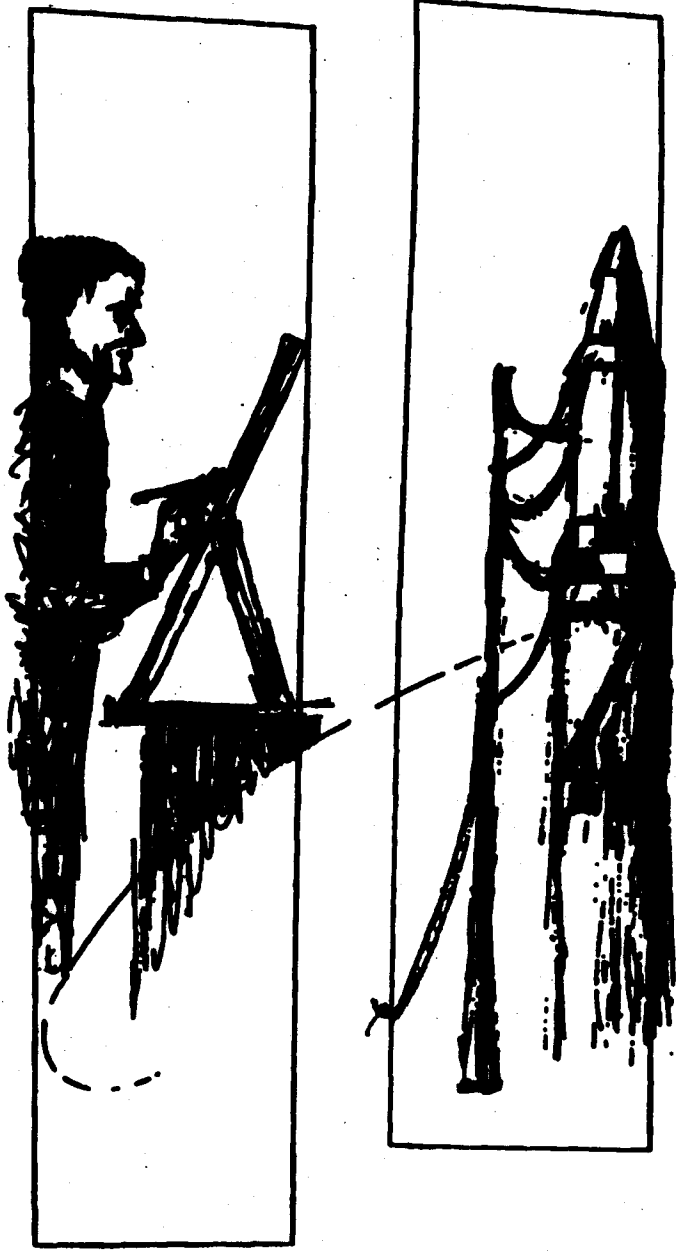




Conf: 4 (10)

~~TOP SECRET~~
C/SPECIAL HANDLING
A/P 67-07028



CORONA/J-3 DESIGN SUMMARY
AND
READINESS REVIEW

~~TOP SECRET~~
C/SPECIAL HANDLING
A/P 67-07028

APRIL 1967

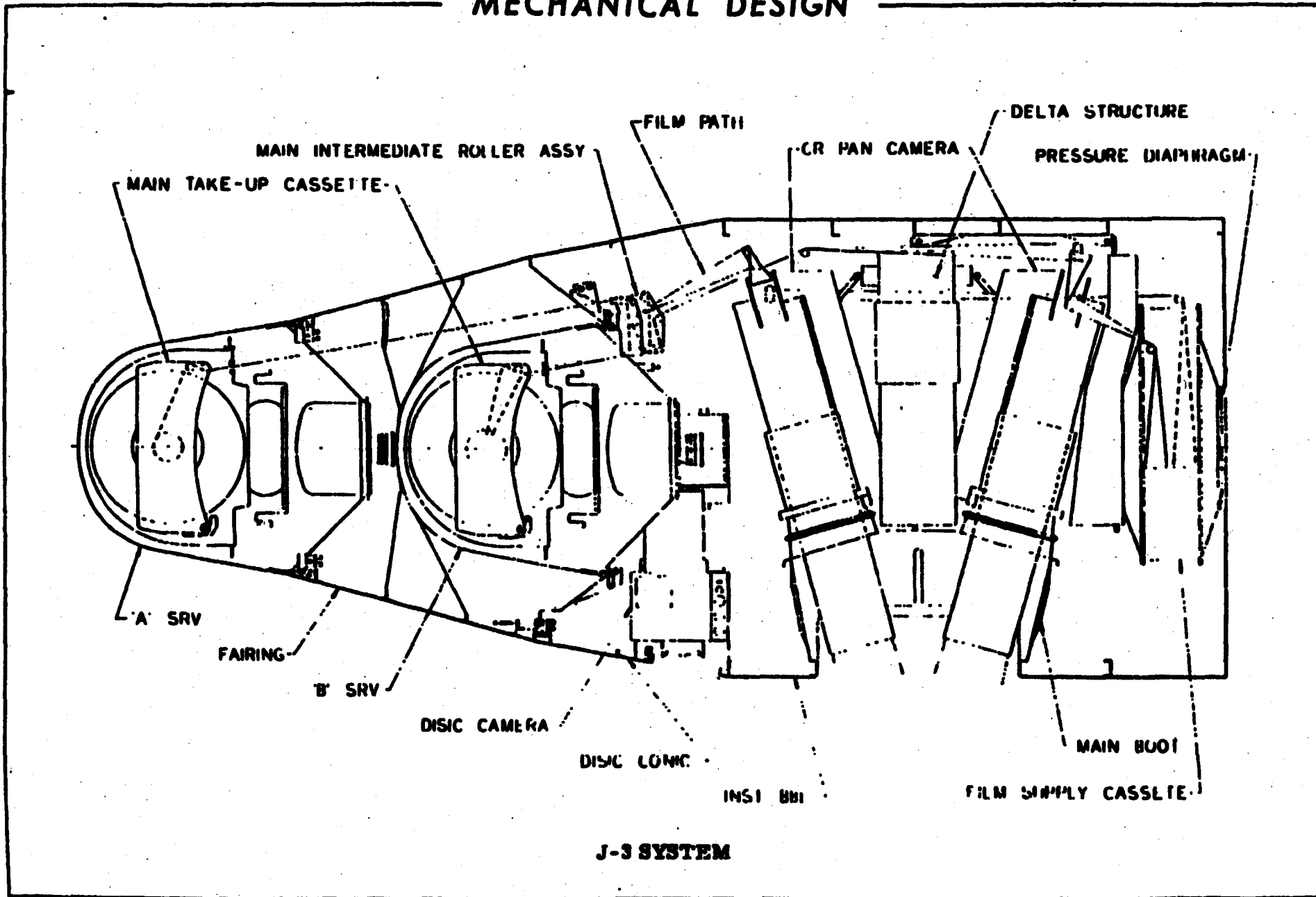
copy 4

~~TOP SECRET~~
C/SPECIAL HANDLING
No. A/P 67-07028

MECHANICAL

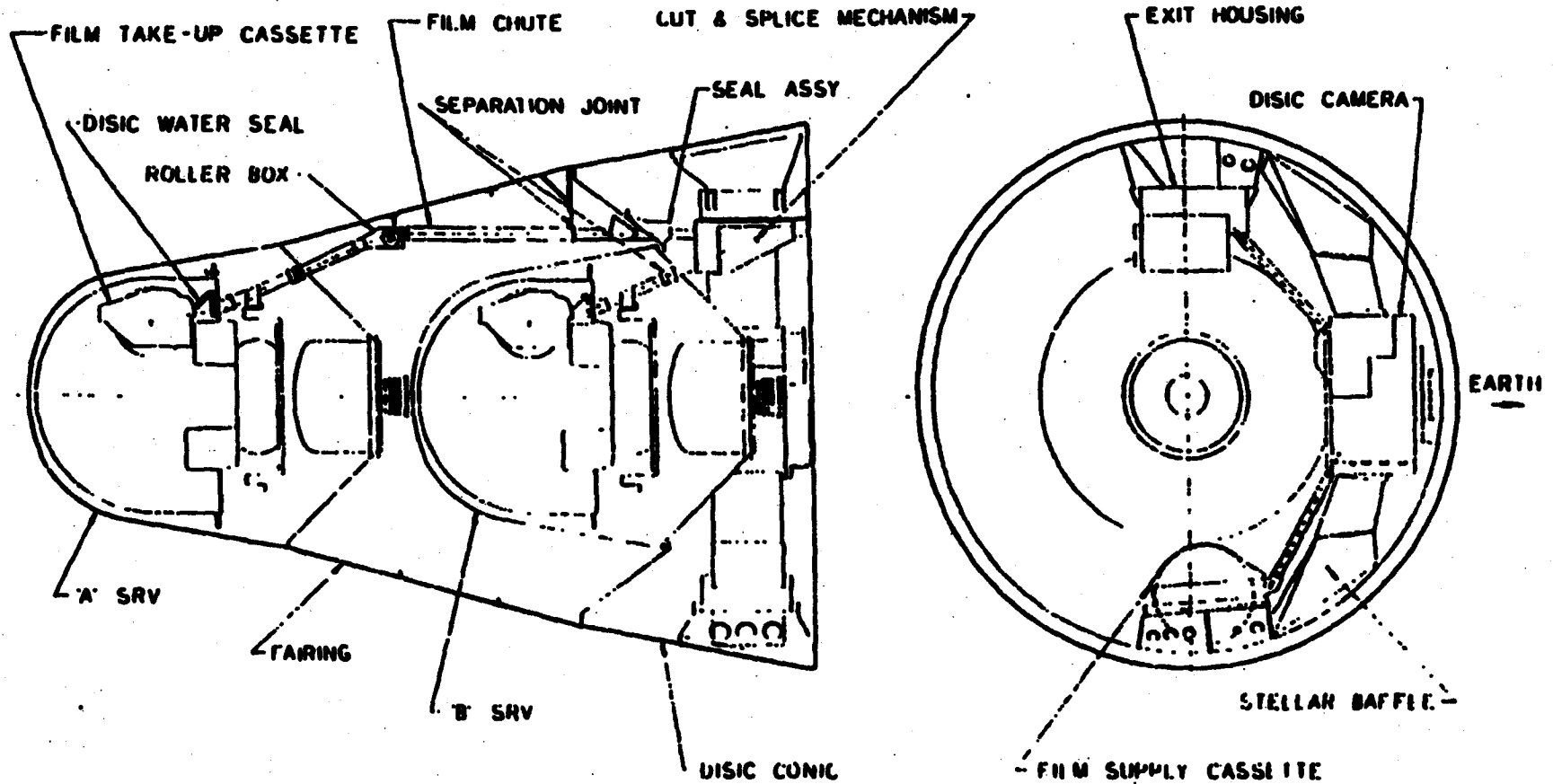
~~TOP SECRET~~
C/SPECIAL HANDLING
No. A/P 67-07028

MECHANICAL DESIGN



J-3 SYSTEM

MECHANICAL DESIGN



DISIC SYSTEM

MECHANICAL DESIGN

| PAYLOAD STRUCTURE | | 15° FAIRING | 10° CONE | BARREL | |
|--|-----------------------------------|--|---|--|--------------|
| BASIC DIMENSIONS AND RING ARRANGEMENT (RINGS NOT TO SCALE) OVERALL LENGTH 152.0 IN LIFTOFF WEIGHT 1772 LBS | | | | | |
| | | SKIN THICKNESS | .090 | .090 | .071 |
| | | MATERIAL | SKIN HM21A-T8 MAG | HM21A-T8 MAG | HM21A-T8 MAG |
| | END RINGS | HM21A-T5 MAG | HM21A-T5 MAG | HM21A-T5 MAG | |
| | MID RINGS | HM21A-T5 MAG | HM21A-T5 MAG | ZRUCR-T5 MAG | |
| RING TO SKIN FASTENING | END RINGS | RIVETED | WELDED | WELDED | |
| | MID RINGS | RIVETED | RIVETED | RIVETED | |
| WEIGHT LBS | BASIC SV | 38 | 56 | 83 | |
| | AFTER AP MOD | 40 | 66 | 180 | |
| | COMPLETE | 57 + 217 SRV (EMPTY) | 224 + 219 SRV (EMPTY) | 688 | |
| DOORS | ACCESS | 4 | 4 | 6 | |
| | OPTICAL | NONE | 3 (1 TERRAN, 2 STELLAR) | 5 (1 PAN, 4 HD) | |
| COMPONENTS | THEMAL | THERMAL CURTAIN THERMAL SHIELDING | THERMAL SHIELDING | PAN/PANIC CR SYSTEM THERMAL SHIELDING | |
| | PHOTOGRAPHIC | FAIRING ROLLER BOX | MAIN INTERMEDIATE ROLLER ASSY DISK SYSTEM (1 TERRAN, 2 STELLAR) | MAIN/PANIC CR SYSTEM (2 MAIN, 4 HORIZON OPTICS) SUPPLY CASSETTE | |
| | STRUCTURAL MOUNTS | ELECTRICAL BOX MOUNT | ELECTRICAL BOX MOUNTS DISK CRNT MOUNTING MOUNT DISK SUPPLY MOUNT DISK INST MOUNT | SUPPLY CASSETTE MOUNTS ELECTRICAL BOX MOUNTS PAN INST MOUNT | |
| | ELECTRICAL (NOT INCL INST OR SRV) | T/M J-BOX | DISK CYCLE LIGHTER POWER BOX (PWB) TRANSFER J-BOX PYRO J BOX | ML PROGRAMMER, EXPOSURE CONT POWER BOX (PFI), SLP COND VACUUM CASE, COMMAND BOX HUMIDITY SENSOR, CLOCK TELEMETRY J BOX (AIT) PYRO CURRENT MONITOR | |
| | MECHANICAL | SRV SPROFF PLUG & RETRACTOR, SRV PIN PULLERS & SPRINGS, FAIRING EJECTION SPRINGS DISK CHUTES | FAIRING SPRN OFF PLUGS & RETRACTOR SRV SPRN OFF PLUG & RETRACTOR SRV PIN PULLER & SPRINGS FAIRING PIN PULLERS DISK INST PULLERS DISK PIN PLAI ASSY MOUNTING PLAI ASSY LUI & SRV ASLY PRESSURE MAKE-UP | MAIN DUOR PIN PULLERS HORIZON DUOR INJECTORS N2 VALVE | |

J-3 STRUCTURAL SUMMARY

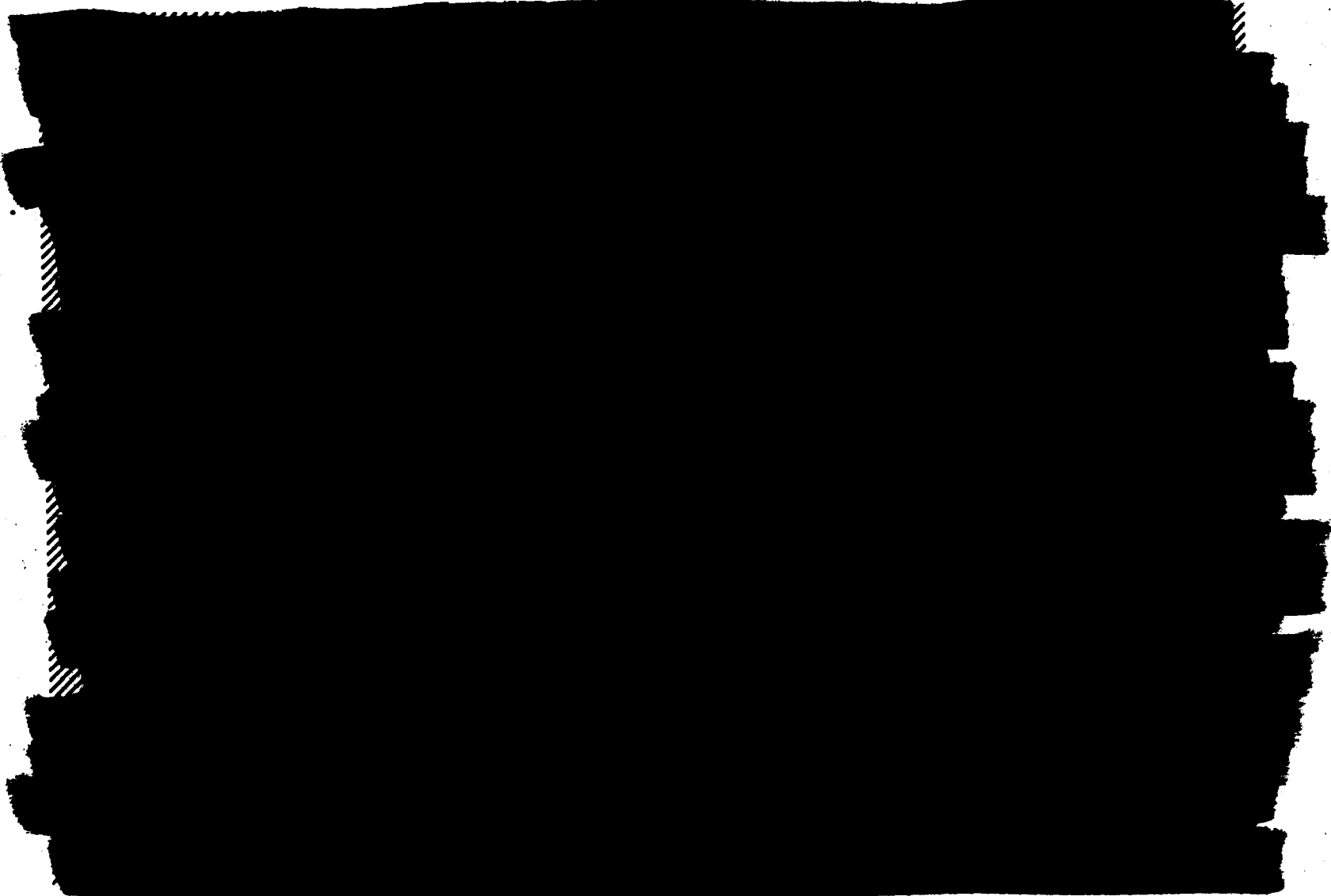
~~TOP SECRET~~
C/SPECIAL HANDLING
No. A/P 67-07028

ELECTRICAL

~~TOP SECRET~~
C/SPECIAL HANDLING
No. A/P 67-07028

~~TOP SECRET~~
C/SPECIAL HANDLING

ELECTRICAL DESIGN

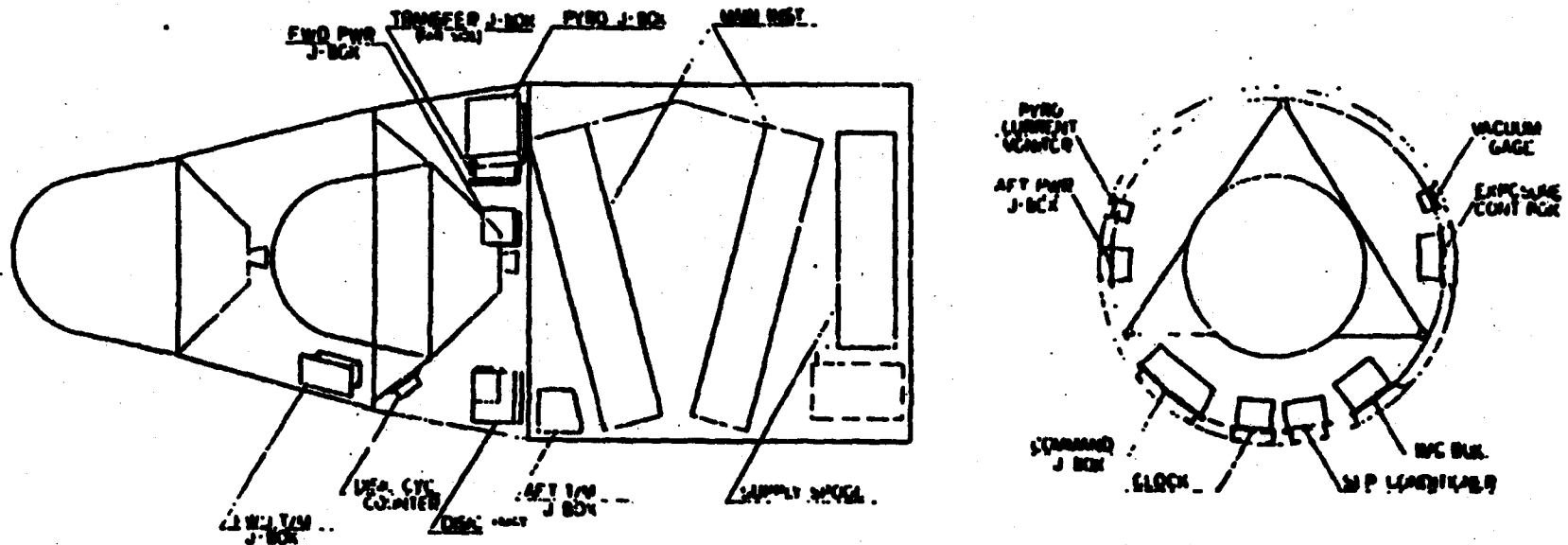


INTERCONNECTION DIAGRAM

~~TOP SECRET~~
C/SPECIAL HANDLING

J-3 DESIGN REVIEW

ELECTRICAL DESIGN



EQUIPMENT INSTALLATION

PROFILE

~~TOP SECRET~~
C/SPECIAL HANDLING
No. A/P 67-07028

ELECTRICAL SUBSYSTEMS

- COMMAND
- IMC
- EXPOSURE CONTROL
- PYROTECHNIC
- T/M
- SILICON LIGHT PULSER
- POWER
- TAPE RECORDER
- PRESSURE MAKEUP

~~TOP SECRET~~
C/SPECIAL HANDLING
No. A/P 67-07028

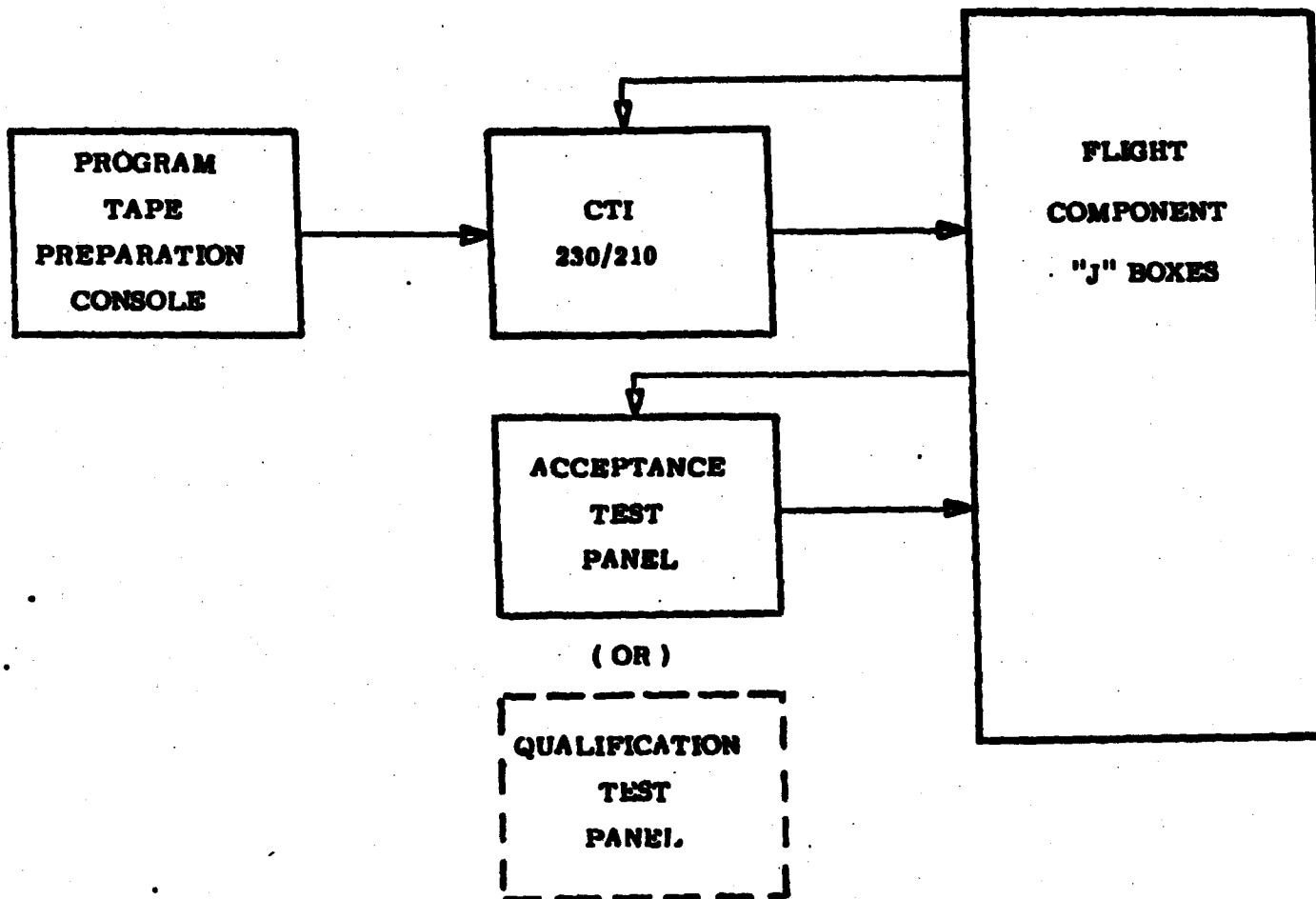
~~TOP SECRET~~
C/SPECIAL HANDLING
No. A/P 67-07028

ELECTRICAL AGE

~~TOP SECRET~~
C/SPECIAL HANDLING
No. A/P 67-07028

AGE ELECTRICAL DESIGN

~~TOP SECRET~~
C/SPECIAL HANDLING

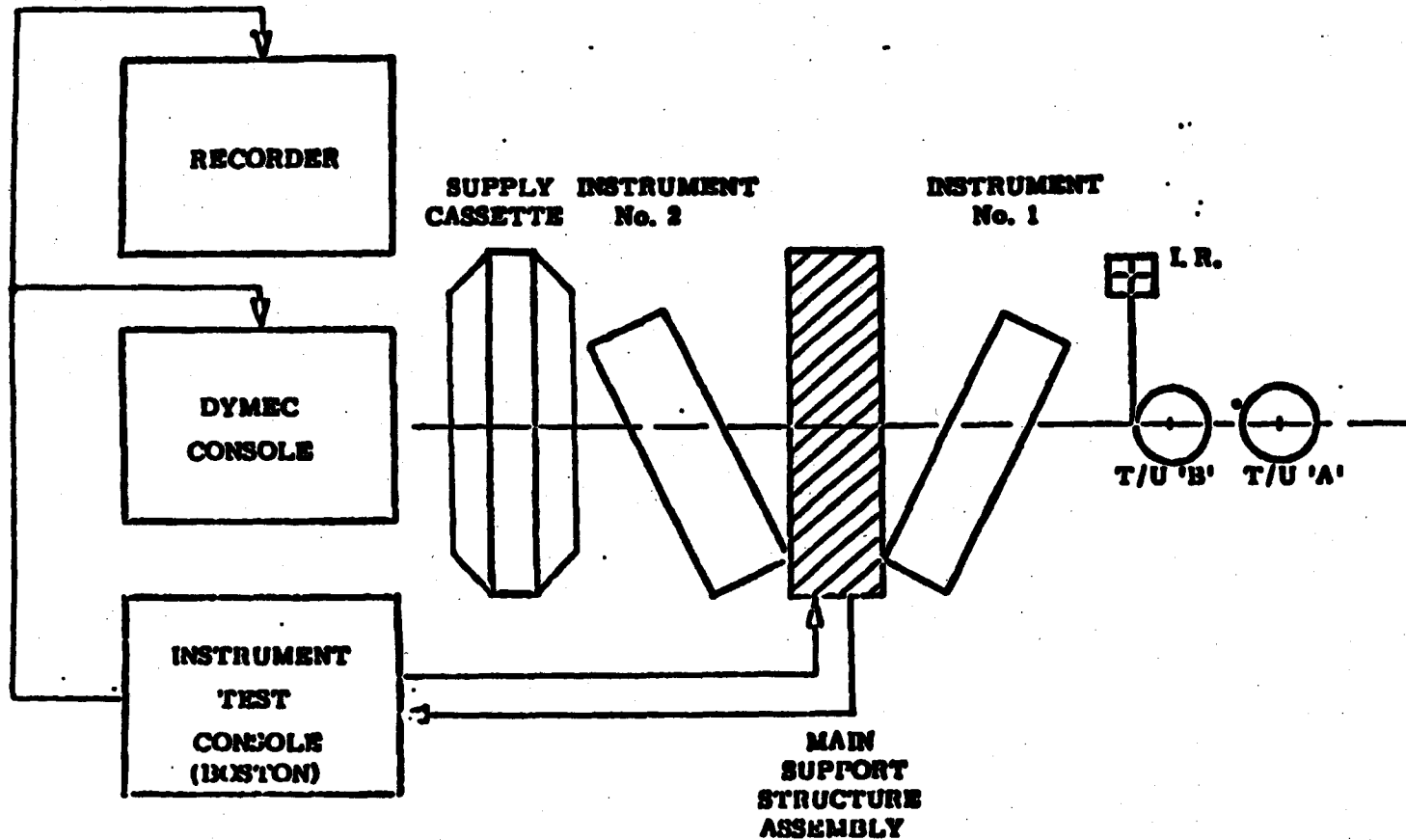


BLOCK DIAGRAM
ACCEPTANCE TEST
FLIGHT COMPONENT "J" BOXES

~~TOP SECRET~~
C/SPECIAL HANDLING

J3 DESIGN REVIEW

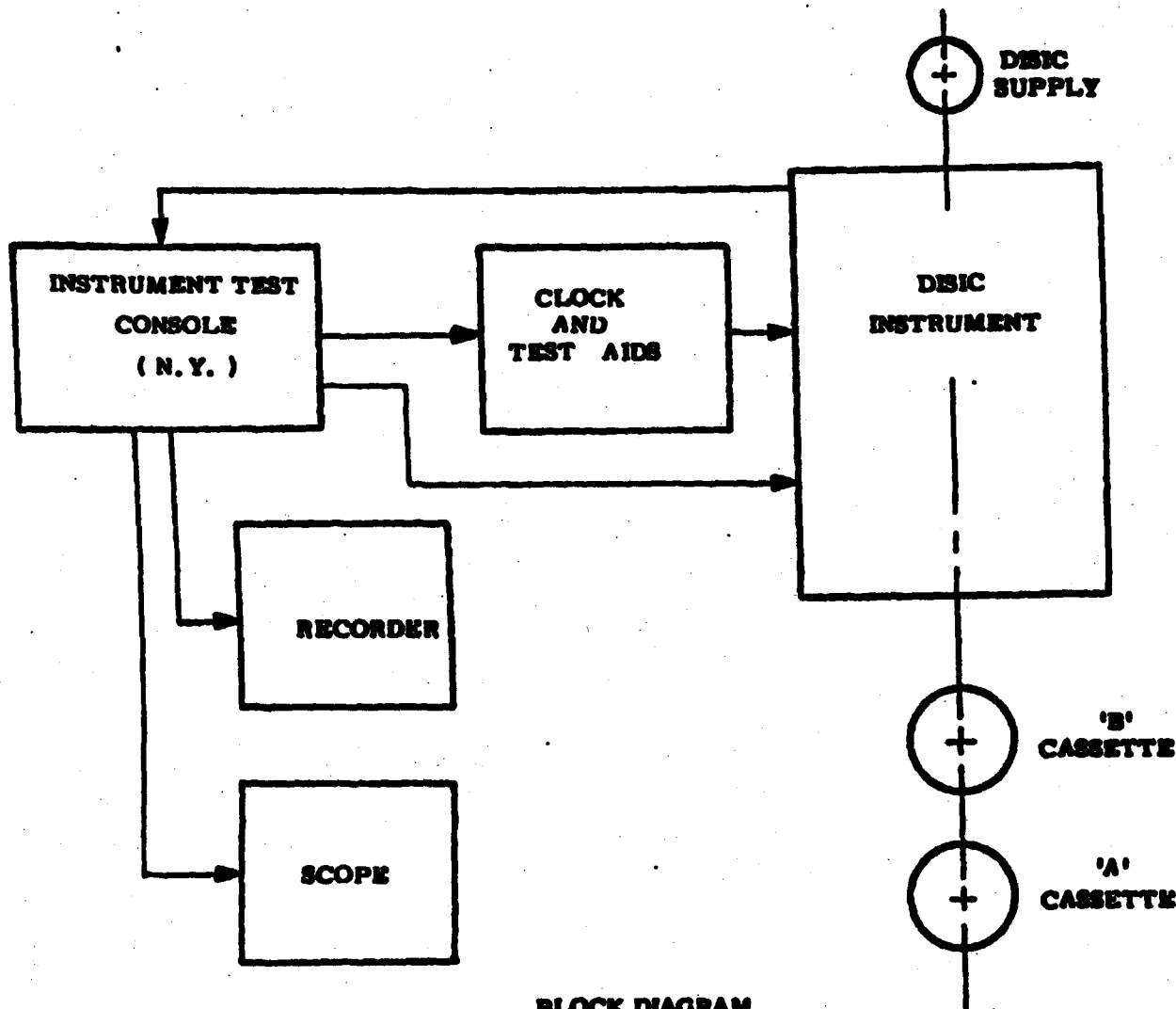
Pg. 10
No. A/P 67-07028



BLOCK DIAGRAM
ACCEPTANCE TEST
MAIN INSTRUMENT SUB-SYSTEM

AGE ELECTRICAL DESIGN

~~TOP SECRET~~
C/SPECIAL HANDLING

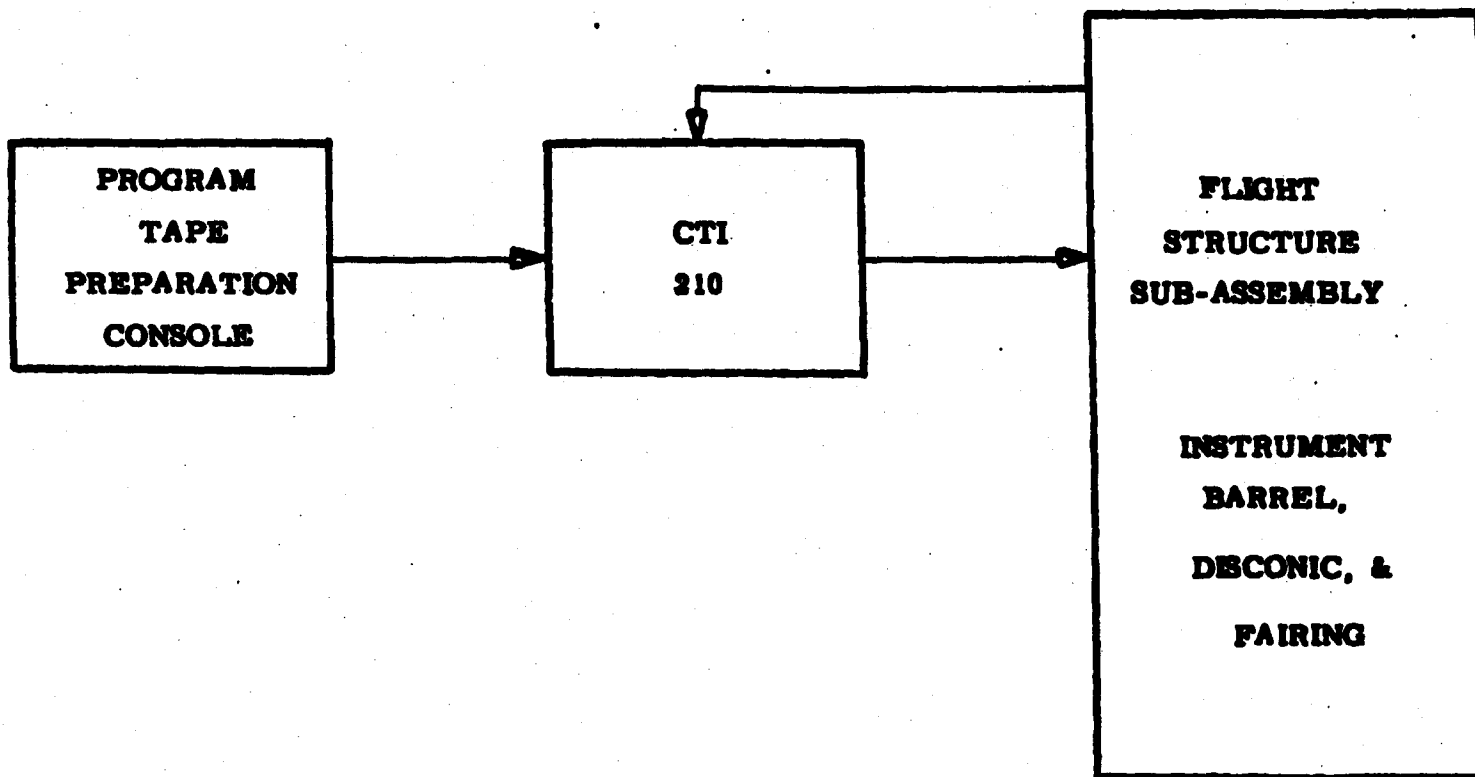


BLOCK DIAGRAM
ACCEPTANCE TEST
DSIC INSTRUMENT SUB-SYSTEM

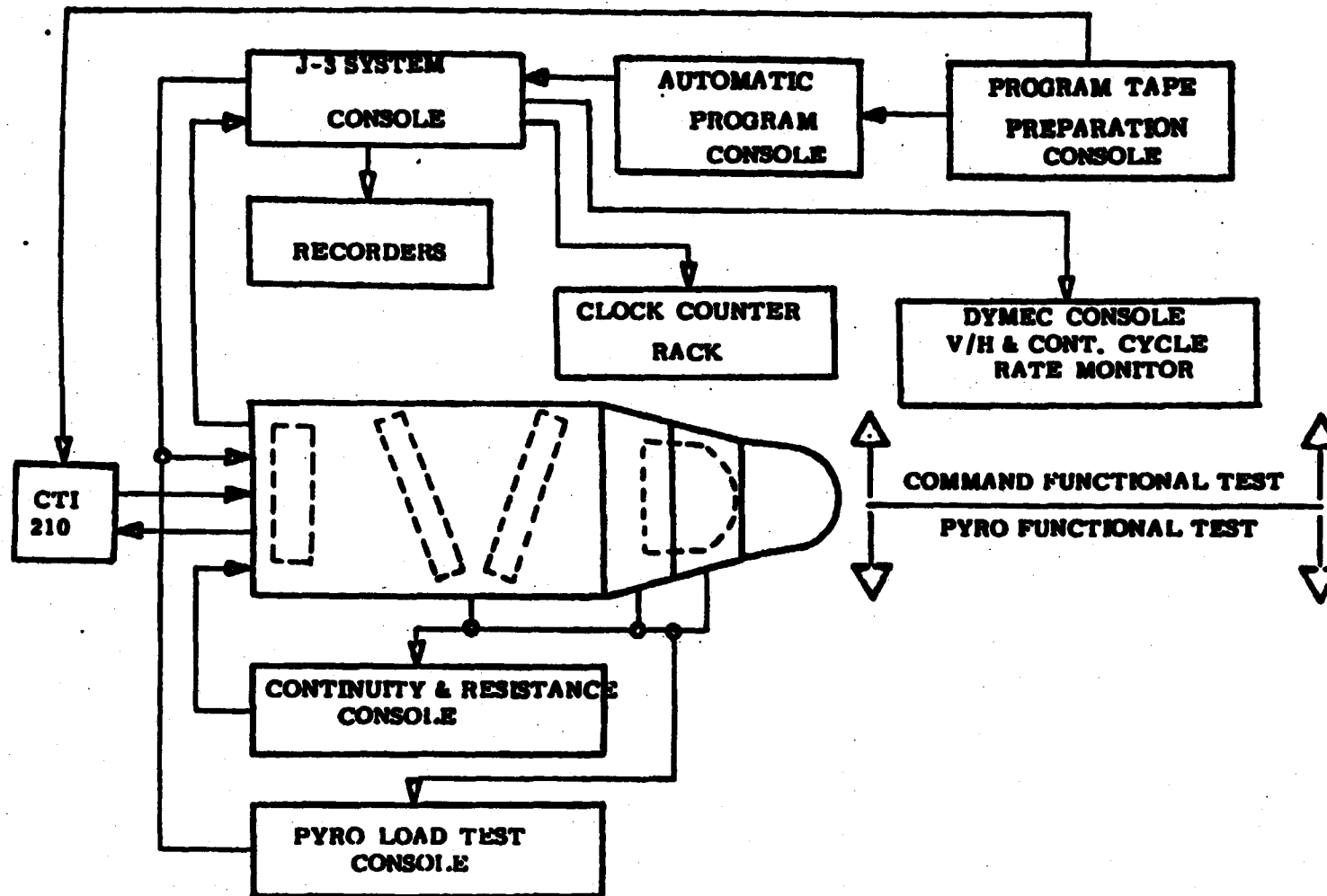
~~TOP SECRET~~
C/SPECIAL HANDLING

J3 DESIGN REVIEW

Pg. 12
No. A/P 67-07028



BLOCK DIAGRAM
ACCEPTANCE TEST
FLIGHT STRUCTURE SUB-ASSEMBLY

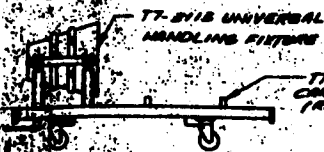


BLOCK DIAGRAM
SYSTEM TEST CONFIGURATION
FUNCTIONAL TEST

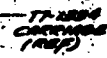
~~TOP SECRET~~
C/SPECIAL HANDLING
No. A/P 67-07028

MECHANICAL AGE

~~TOP SECRET~~
C/SPECIAL HANDLING
No. A/P 67-07028



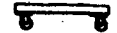
T7-1115 UNIVERSAL HANDLING FIXTURE



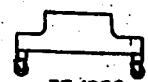
T7-1234 CARTILAGE TRAY



T7-1228 A/L DOLLY



T7-1249 STORAGE DOLLY



T7-1250 SLUNG TRANSPORT



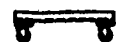
T7-1252 HIGH ALTITUDE CHAMBER CONSOLE DOLLY



T7-1248 MAST SUPPORT



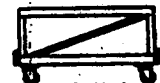
T7-1239 FOREBODY STORAGE DOLLY



T7-1240 AUXILIARY A/L DOLLY



T7-1241 INSTC LOADING DOLLY



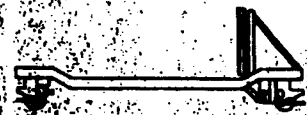
T7-2116 BARREL DOLLY



T7-2121 COLLIE DOLLY



T7-1220 FOREBODY MAST SUPPORT DOLLY



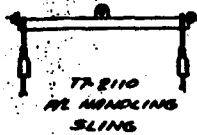
T7-1220 PINT DOLLY

TOP SECRET

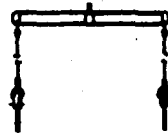
GENERAL ARRANGEMENT IN 27107-07053 PAGE 16

TOP SECRET

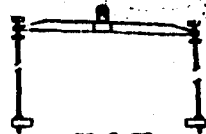
| | |
|-----------------------------|-------------|
| J3 GHE GENERAL ARRANGEMENT | |
| DRAWN <i>[Signature]</i> | |
| CHECKED <i>[Signature]</i> | |
| APPROVED <i>[Signature]</i> | |
| DATE | NOV 10 1953 |



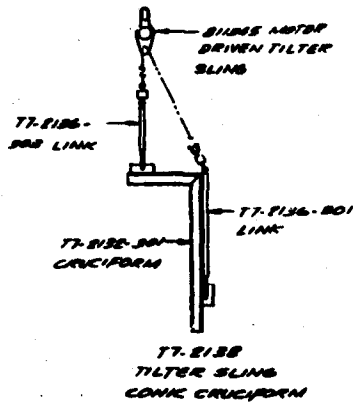
T7-E110
AZ HANDLING
SLING



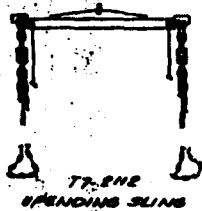
T7-E112
LOW PROFILE
SLING



T7-E117
HANDLING SLING



T7-E101
BARREL HANDLING
SLING



T7-E114
SPANDING SLING

TOP SECRET

GENERAL DRAWING OF T7-E114 OTHER PAGE 17

TOP SECRET

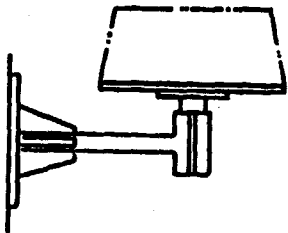
US-SYMBOLS

~~TOP SECRET~~
C/SPECIAL HANDLING
No. A/P 67-07028

TOOLING

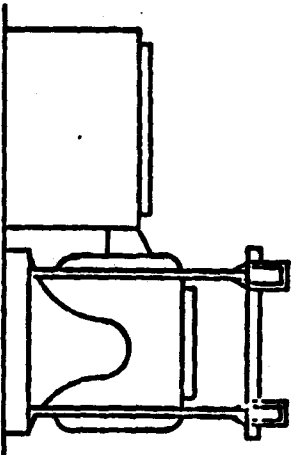
~~TOP SECRET~~
C/SPECIAL HANDLING
No. A/P 67-07028

TOOL DESIGN



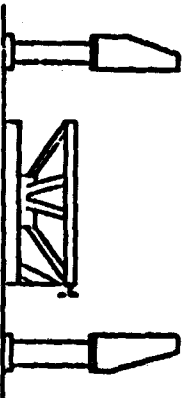
- 13 JIGS
- 8 FIXTURES
- 17 TEMPLATES

MACHINE SHOP



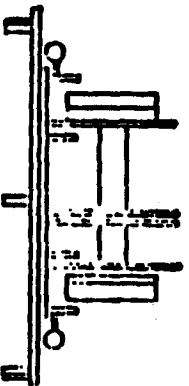
- 20 VIBRATION FIXTURES
- 2 SCRAPPER RINGS
- 13 QUAL TEST FIXTURES
- 16 MASS SIMULATORS

ENVIRONMENTAL LAB & QUAL. TEST



- 10 TEST FIXTURES
- 5 FOGGING TEST FIXTURES
- 1 COLLIMATION FIXTURE

SYSTEM TEST



- 20 ALIGNMENT FIXTURES
- 3 ALIGNMENT JIGS
- 2 P/L RESTRIEVERS
- 3 DOLLIES
- 5 C/O FIXTURES

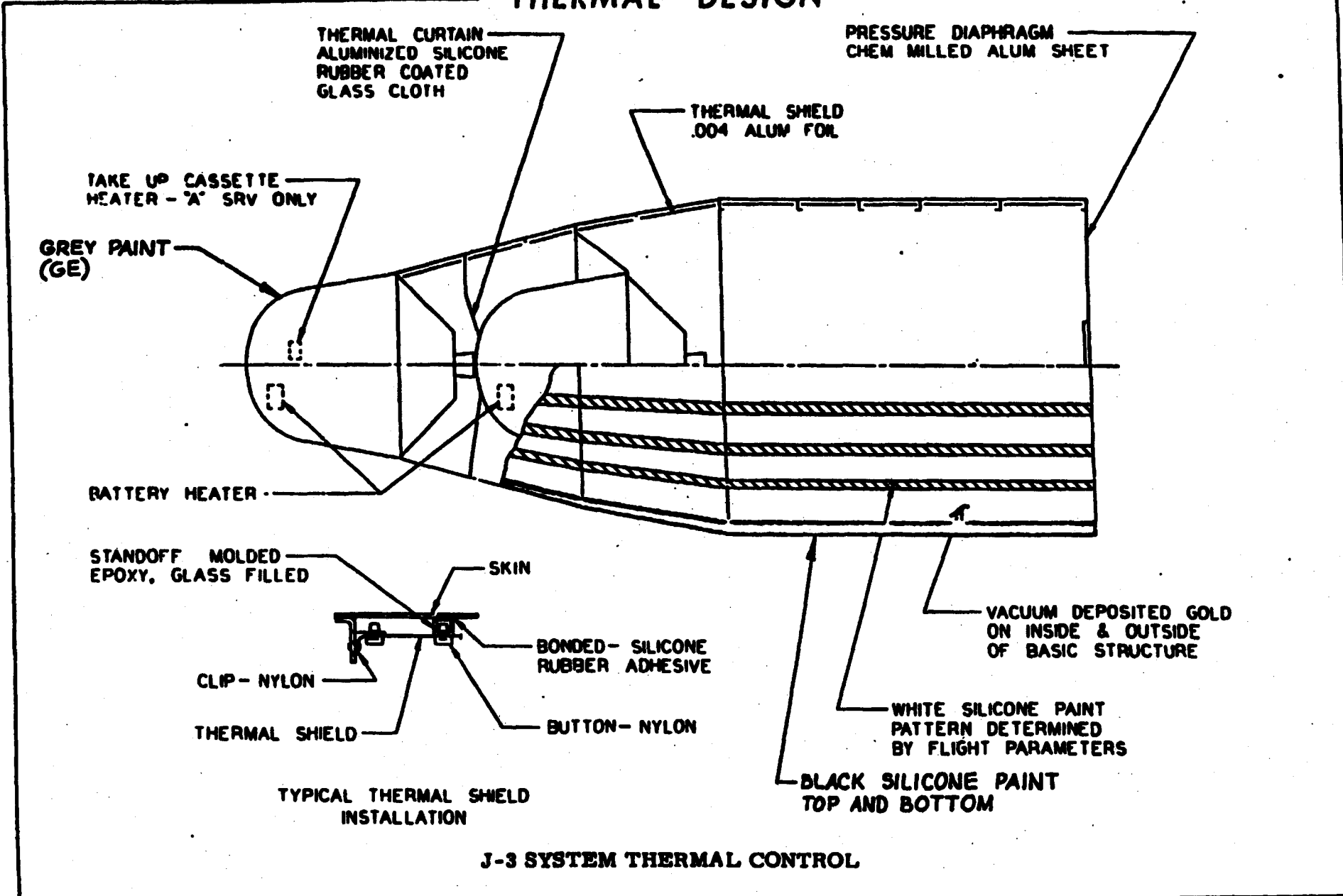
SEV AREA

~~TOP SECRET~~
C/SPECIAL HANDLING
No. A/P 67-07028

THERMAL

~~TOP SECRET~~
C/SPECIAL HANDLING
No. A/P 67-07028

THERMAL DESIGN



J-3 SYSTEM THERMAL CONTROL

~~TOP SECRET~~
C/SPECIAL HANDLING
No. A/P 67-07028

AGENA

~~TOP SECRET~~
C/SPECIAL HANDLING
No. A/P 67-07028

~~TOP SECRET~~
C/SPECIAL HANDLING
No. A/P 67-07028

AGENA REVISIONS FOR -1/-3 PAYLOAD COMPATIBILITY

- PYRO POWER SYSTEM ISOLATED AND INCREASED
- 400 CYCLE POWER SYSTEM EXPANDED
- POWER CONVERSION EQUIPMENT CURRENT MONITORING ADDED
- CREATED KIT TO ACCOMMODATE -1 OR -3 PAYLOAD
- CREATED FOUR LINK IV KITS FOR SPECIAL INSTRUMENTATION
- THRUST VALVE MONITORS PROVIDED TO -3 PAYLOAD
- MODIFIED PRIMARY AND LIFEBOAT RECOVERY SEQUENCES
- REVISED EVENT TIME FOR "RESET A/P RECOVERY ENABLE" SIGNAL
- MODIFIED TYPE X DC/DC CONVERTER POWER CONTROL
- SUBSTITUTED TWO HIGHER-RESPONSE T/M CHANNELS
- ADDED REDUNDANT PIN ON AGENA/AP INTERFACE CONNECTOR FOR
- IN-FLIGHT RESET COMMAND
- EXPANDED AND IMPROVED RF COMMAND CAPABILITY TO A/P

~~TOP SECRET~~
C/SPECIAL HANDLING
No. A/P 67-07028

~~TOP SECRET~~
C/SPECIAL HANDLING
NO. A/P 67-07028

VEHICLE SYSTEM CHECKOUT PROGRESS

- o FTV 1641 -- PRELIMINARY CHECKOUT COMPLETE: FINAL TESTING & EVALUATION

IN PROGRESS

- o FTV 1636 -- FLIGHT DEMONSTRATION OF UNCLE COMMAND SYSTEM COMPLETE:

EVALUATION IN PROGRESS

~~TOP SECRET~~
C/SPECIAL HANDLING
NO. A/P 67-07028

~~TOP SECRET~~
C/SPECIAL HANDLING
NO. A/P 67-07028

AGENA/PAYLOAD OPEN ITEMS AND SOLUTIONS

- o TRANSFER TO EXPERIMENT #2 SIGNAL (-1 PAYLOAD ONLY)

SOLUTION

- o AGENA (FTV 1652 & UP) - DELETE APPLICABLE CIRCUITRY AND INTERFACE CONNECTION.
- o AP -- DESIGN AND MANUFACTURE TWO (2) KITS FOR USE WITH (-1) PAYLOADS AFTER FTV 1651.

- o AGENA UNREGULATED POWER DISTRIBUTION SYSTEM

SOLUTION

- o AGENA (FTV 1641 & UP) - REDESIGN AGENA POWER DISTRIBUTION SYSTEM TO ALLOW BYPASS OF PYRO BUSS ISOLATION DIODE BY RTC.
- o AP - REDUCED MAXIMUM AGENA/PAYLOAD INTERFACE REQUIREMENT TO 38 AMPS.
- o AGENA/PAYLOAD SYSTEM COMPATIBILITY TEST TO BE PERFORMED FOLLOWING AGENA REWORK.

~~TOP SECRET~~
C/SPECIAL HANDLING
NO. A/P 67-07028

○ R-BAND ANALOG COMMAND DURATION

SOLUTION

- AGENA - ANALOG SYSTEM OUTPUT TO PROVIDE 100 MILLISECOND OUTPUT RESULTING FROM SUMMATION OF R-F COMMAND DURATION PLUS DECODER XI HOLD-IN TIME.
- AP - REVISED COMMAND DURATION REQUIREMENT TO 100 MILLISECONDS.

○ AGENA/PAYLOAD INTERFACE GROUND CONNECTION

SOLUTION

- AP - ISOLATE GROUNDING OF (-3) PAYLOAD TO ELIMINATE EXISTING GROUND LOOP.

○ AGENA/PAYLOAD INTERFACE NOMENCLATURE STANDARDIZATION

SOLUTION

- AGENA - REVISED DOCUMENTATION
- AP - REVISED DOCUMENTATION

DESIGN AND EVALUATION AREAS UNDER ANALYSIS

○ AGENA/PAYLOAD

- AP RECOVERY ENABLE SIGNAL LOGIC
 - AP - EVALUATE REQUIREMENT FOR BLOCKING DIODE
- AGENA/PAYLOAD UMBILICAL LANDLINE ASSIGNMENTS
 - AGENA - EVALUATE REASSIGNMENT OF BR 14 AND BR 28 FROM TEST PLUG TO UMBILICAL
- AP DATA ENABLE SIGNAL LOGIC
 - AGENA - EVALUATE REDESIGN REQUIREMENT

○ ORBITAL PLANNING

- TOTAL PAYLOAD SYSTEM WEIGHTS AND ELECTRICAL POWER NOT FINALIZED.
- AVAILABLE MISSIONS AND MISSION LENGTH DETERMINATION NOT COMPLETE.
- ASCENT TRAJECTORY ANALYSIS IN PROGRESS
 - MISSION PARAMETRIC CHARTS TO BE UPDATED BASED ON FINAL (-3) PAYLOAD DESIGN DATA.

~~TOP SECRET~~
C/SPECIAL HANDLING
No. A/P 67-07028

MANUFACTURING

~~TOP SECRET~~
C/SPECIAL HANDLING
No. A/P 67-07028

~~TOP SECRET~~
C/SPECIAL HANDLING
No. A/P 67-07028

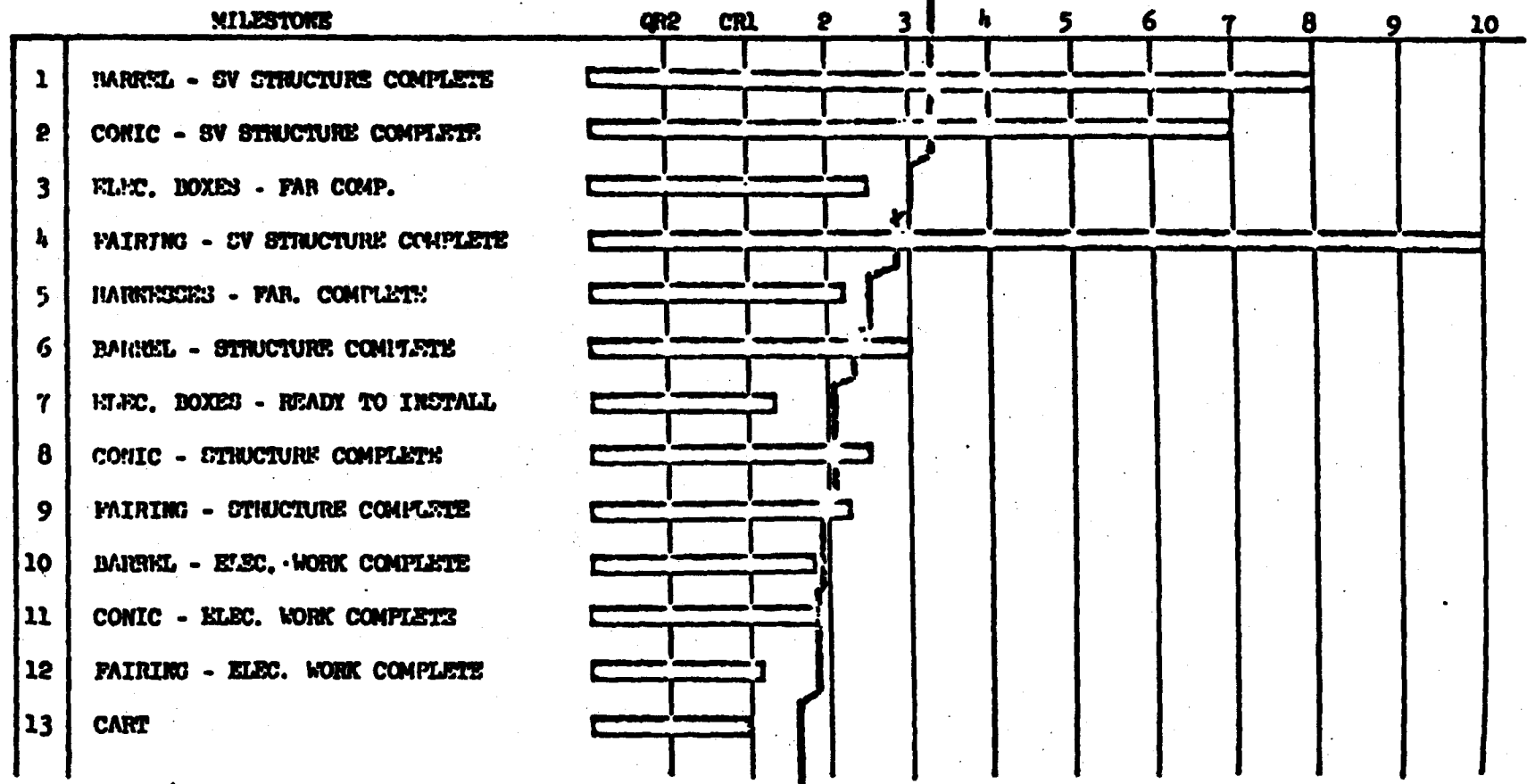
MANUFACTURING STATUS 4/18/67

| <u>Major Item</u> | <u>Complete</u> | <u>In work</u> |
|--------------------|-------------------|----------------|
| Barrel | CR2 | CR3 |
| Conic | CR2 | CR3 |
| Fairing | CR1 | CR2, CR3 |
| TUNA | CR2 & 1 Test Unit | CR3 |
| IMJ | CR2 | Q101 |
| Elect Boxes | CR2 | CR3 |
| Elect Harnesses | CR2 | CR3 |
| <u>AGE</u> | | |
| J.3 Consoles (Mod) | 2 | 4 |
| P/L Simulators | 3 of 6 | 1 |
| S/M Dollies (Mod) | 8 | 1 (New) |
| CTI Cables | All | 0 |
| Hivos Cables | | 1 Set |

~~TOP SECRET~~
C/SPECIAL HANDLING
NO. A/P 67-07028

A/P MANUFACTURING
 J3 PROGRESS CHART (LOB)

LOB - 18 APRIL 1967



~~TOP SECRET~~
C/SPECIAL HANDLING
No. A/P 67-07028

PAYLOAD INTEGRATION

~~TOP SECRET~~
C/SPECIAL HANDLING
No. A/P 67-07028

DESIGN INTEGRATION

- COMPLETED ITEMS
 - SYSTEM DSC, QTS, AND ATS
 - ALL SUBSYSTEM DCS, QTS, ATS
 - AGE SYSTEM REQUIREMENTS SPECS
 - ENGINEERING ANALYSIS REPORTS ON ALL FLIGHT SUBSYSTEMS.
 - FAILURE MODE ANALYSIS ON J-3 PAYLOAD SIMULATOR

- ITEMS IN WORK
 - REVIEW OF ALL DESIGN CONTROL AND TEST SPECIFICATIONS
 - ENGINEERING ANALYSIS REPORT OF J-3 SYSTEM CONSOLES
 - SYSTEM CHECKOUT CONSOLE, ECD 4/28/67
 - SYSTEM THERMAL ALT. CHECKOUT CONSOLE, ECD 5/5/67
 - INTEGRATION OF ALL FLIGHT SUBSYSTEMS AND AGE
 - INERTIA BALANCE PROPOSAL

TEST INTEGRATION

- o COMPLETED ITEMS
 - o COMPONENT TEST PLAN
 - o GENERAL SYSTEM TEST PLAN FOR QUALIFICATION AND ACCEPTANCE
 - o COMPONENT QUALIFICATION AND ACCEPTANCE PROCEDURES APPROVAL
 - o 60-61 TRAINING PROGRAM
 - o REDUCED SCHEMATICS BOOK

- o ITEMS IN WORK
 - o SYSTEM PROCEDURE REVIEW
 - o ENVIRONMENTAL TEST REQUIREMENTS
 - o TRAINING PROGRAM PREPARATION
 - o LAUNCH TEST PLAN (CR1)
 - o STORAGE TEST PLAN
 - o TEST MATRX

ECD
AUG 67
MAY 67
AUG 67
JUN 67
AUG 67
NOV 67

~~TOP SECRET~~
C/SPECIAL HANDLING
No. A/P 67-07028

INTERFACE & DOCUMENT CONTROL SECTION

- o COMPLETED DOCUMENTS
 - o 61 SPECIFICATIONS
 - o 13 REPORTS
 - o 1 IBM LISTING

- o READINESS TO SUPPORT CR1 DATE OF 5 JULY 1967
 - o ALL INTERFACES PROJECTED COMPLETE & UP-TO-DATE
 - o QUALIFICATION TESTING PROJECTED COMPLETE
 - o ALL DOCUMENTATION & INSTRUMENTATION FOR FLIGHT VIBRATION
TEST OF CR1 PROJECTED COMPLETE; TESTS ON CR 2, 3, & 4 TO FOLLOW
 - o ALL OTHER CR1 ITEMS PROJECTED COMPLETE

~~TOP SECRET~~
C/SPECIAL HANDLING
No. A/P 67-07028

~~TOP SECRET~~
C/SPECIAL HANDLING
No. A/P 67-07028

INTERFACE & DOCUMENT CONTROL SECTION

ECD

- o SUMMARY OF ITEMS IN WORK
 - o COMMAND SEQUENCE OF EVENTS APR 67
 - o DISIC OPERATIONS MANUAL MAY 67
 - o FINAL SIGNOFF OF THE AP-SV INTERFACE APR 67
 - o BOSTON LOL/LCL COMMITMENT JUN 67
 - o TRAINING PROGRAM NOV 67

- o NEW SPECIFICATIONS IN PROCESS
 - o WEIGHT PREDICTION APR 67
 - o PYRO VALIDATION APR 67
 - o STORAGE & HANDLING MAY 67
 - o PRESSURIZED SUBSYSTEM MAY 67
 - o LIGHT LEAK MAY 67
 - o WEIGHT & BALANCE PENDING TEST

~~TOP SECRET~~
C/SPECIAL HANDLING
No. A/P 67-07028



~~TOP SECRET~~
C/SPECIAL HANDLING
No. A/P 67-07028

TEST

~~TOP SECRET~~
C/SPECIAL HANDLING
No. A/P 67-07028

~~TOP SECRET~~
C/SPECIAL HANDLING
No. A/P 67-07028

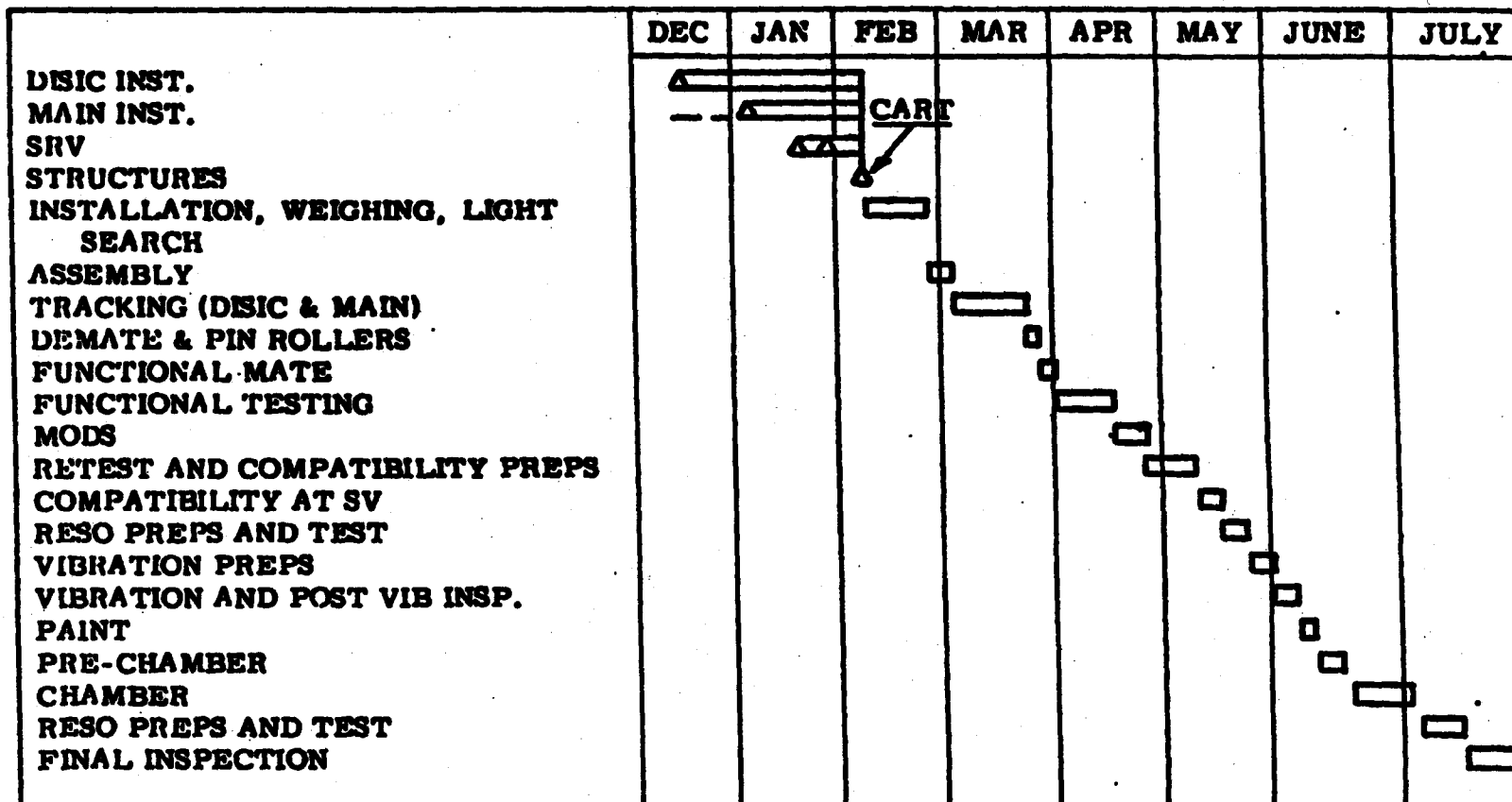
COMPONENTS

| | QUALIFICATION | QR 2 | CR-1 | CR-2 | CR-3 |
|-------------------|---------------|------|------|------|------|
| PYRO BOX | C | C | C | W | W |
| COMMAND BOX | T | C | C | T | W |
| TRANSFER BOX | - | C | C | C | T |
| SWITCH PROGRAMMER | T | C | C | T | W |
| FORWARD T/M BOX | - | C | C | C | T |
| AFT T/M BOX | T | C | C | W | W |
| SLOPE PROGRAMMER | T | C | C | W | W |
| SLP CONDITIONER | T | C | C | W | T |
| FORWARD POWER BOX | - | C | C | C | T |
| AFT POWER BOX | C | C | C | T | W |
| CYCLE COUNTER | - | C | C | T | T |
| CURRENT SENSOR | - | C | C | C | T |
| TUNA | C | C | C | W | W |
| DISIC W/S | C | C | C | W | W |
| PMU | W | C | C | W | W |
| TAPE RECORDER | - | W | T | W | W |

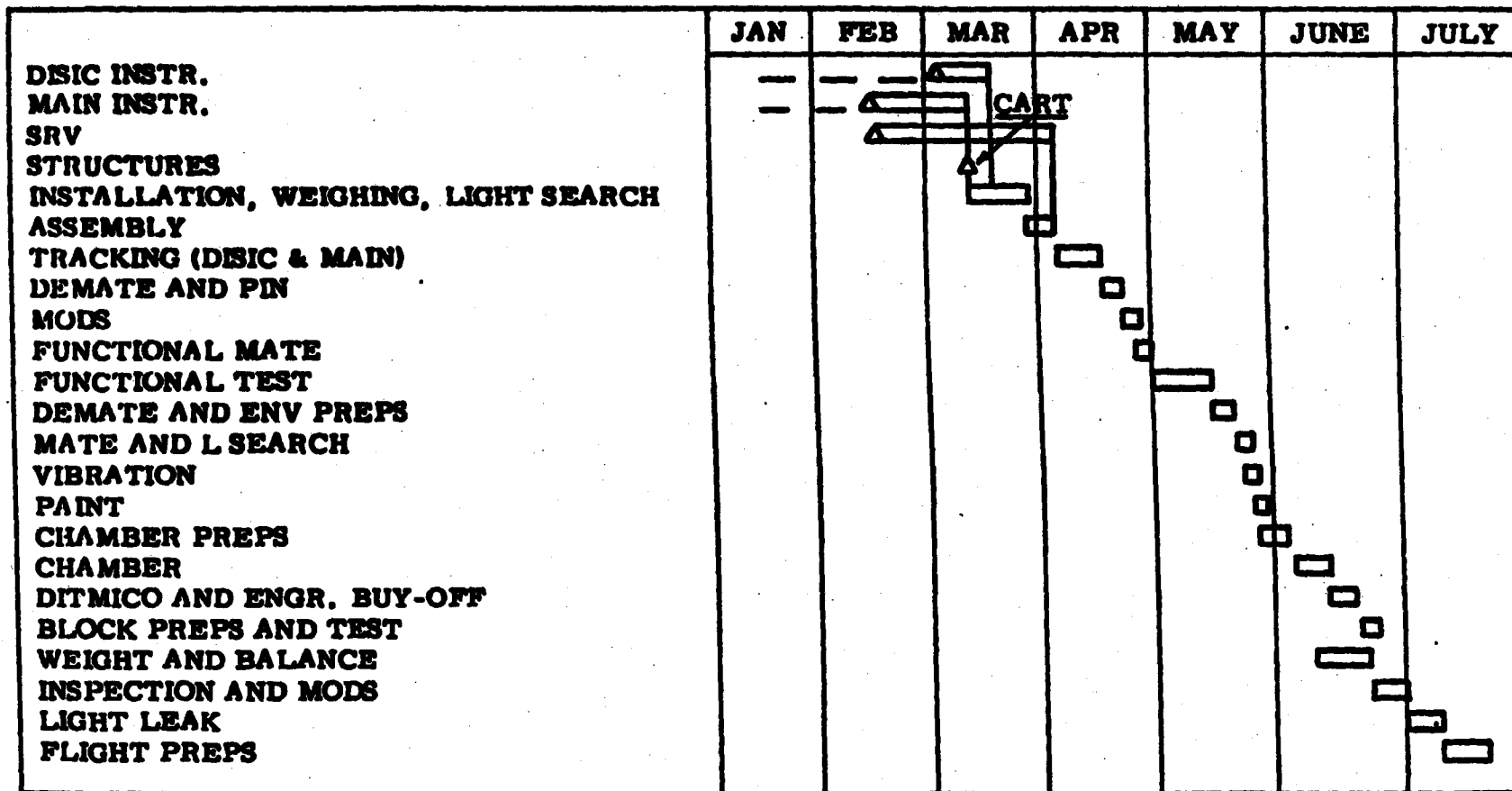
LEGEND: T = IN TEST
C = COMPLETE
W = WAITING, NOT RECEIVED
- = NO QUAL TEST REQUIRED

~~TOP SECRET~~
C/SPECIAL HANDLING
No. A/P 67-07028

QR-2



CR-1



~~TOP SECRET~~
C/SPECIAL HANDLING
No. A/P 67-07028

SRV

- o SUMMARY OF COMPLETED ITEMS -- QR-2, CR-1
 - o RECEIVING INSPECTION
 - o SRV/AGE COMPATIBILITY
 - o SRV ACCEPTANCE TESTING
 - o TRACKING ASSEMBLY
 - o CAPSULE COVER/WATER SEAL ACCEPTANCE
 - o BLOSSOM TM ACCEPTANCE AND INSTALLATION
 - o DISIC TAKE UP INSTALLATION
 - o MAIN TAKE UP INSTALLATION
 - o TM BATTERY ACCEPTANCE AND INSTALLATION
 - o TAPE RECORDER INSTALLATION COMPLETE IN CR-1
- o ALL SRVs ARE IN SYSTEM TEST FOR TRACKING AND FUNCTIONAL TESTS
- o SHORTAGES: NO T/C GUILLOTINE HARDWARE

~~TOP SECRET~~
C/SPECIAL HANDLING
No. A/P 67-07028



~~TOP SECRET~~
C/SPECIAL HANDLING
No. A/P 67-07028

OPERATIONS
AND
ANALYSIS

~~TOP SECRET~~
C/SPECIAL HANDLING
No. A/P 67-07028

~~TOP SECRET~~
C/SPECIAL HANDLING
NO. A/P 67-07028

WORK COMPLETED

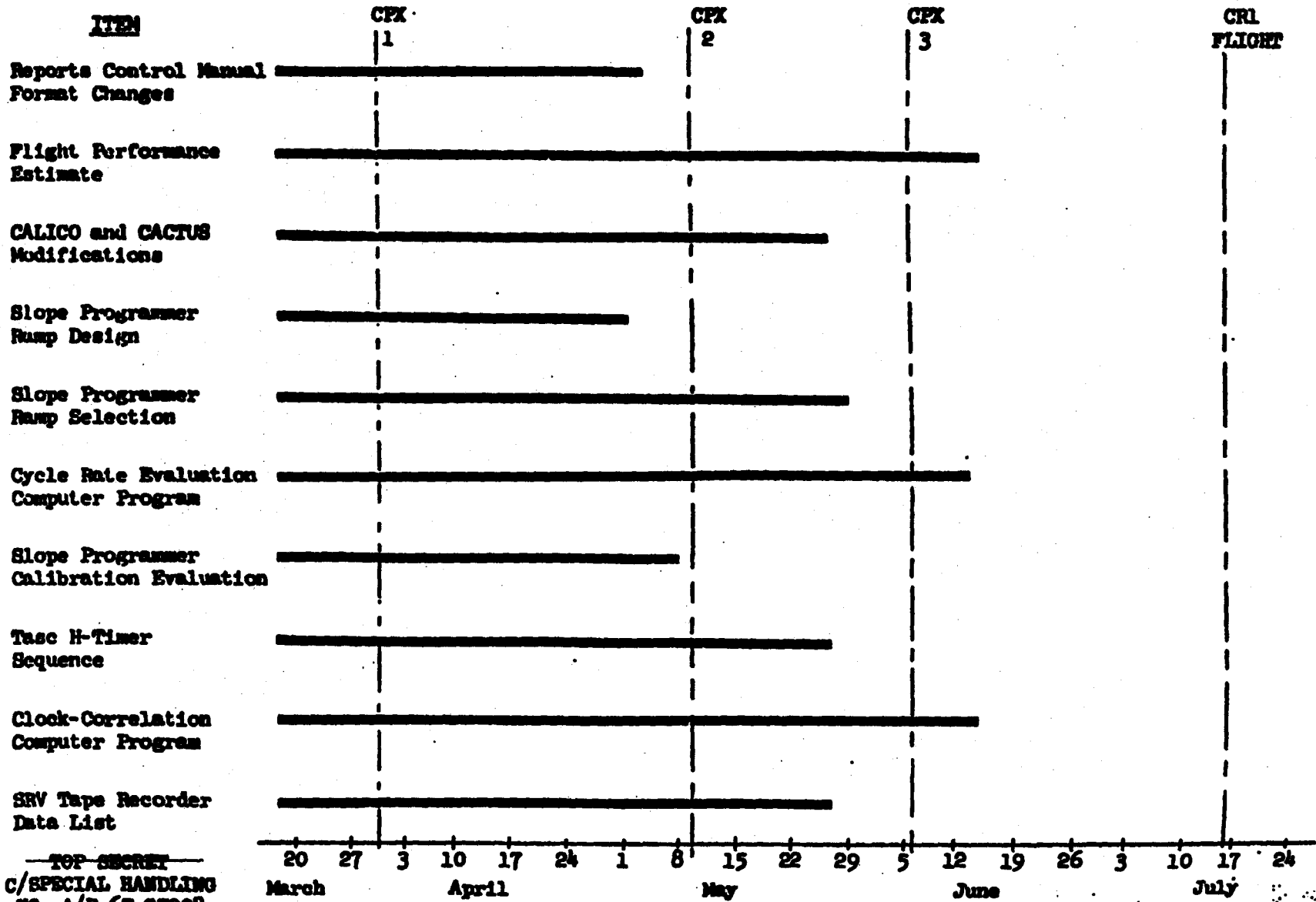
- o DISIC CONSUMPTION COMPUTER PROGRAM
- o "CALICO" GENERATION OF DISIC COMMANDS AND PLOTS
- o PAYLOAD COMMAND GENERATOR COMPUTER PROGRAM
- o SLOPE PROGRAMMER PROFILE EVALUATION COMPUTER PROGRAM
- o SLOPE PROGRAMMER VOLTAGE/CYCLE RATE CALIBRATION COMPUTER PROGRAM
- o TEMPERATURE SYSTEM CALIBRATION AND EVALUATION COMPUTER PROGRAM
- o SRV PAYLOAD TAKE-UP POTENTIOMETER CALIBRATION AND EVALUATION COMPUTER PROGRAM
- o INSTRUMENTATION REQUIREMENT SPECIFICATION
- o SLIT PROGRAMMER REQUIREMENTS
- o DISIC BAFFLE REQUIREMENTS
- o I/L TEST FIXTURE REQUIREMENTS
- o FOGGING LAMP REQUIREMENTS
- o PROCESS SPECIFICATION REVISION, TYPE 3404, 3400 AND 3401
- o EVALUATION OF TYPE 340 FILM FOR DISIC
- o PHOTOMETER INSTALLATION REQUIREMENTS

~~TOP SECRET~~
C/SPECIAL HANDLING
NO. A/P 67-07028



~~TOP SECRET~~
 C/SPECIAL HANDLING
 NO. A/P 67-07028

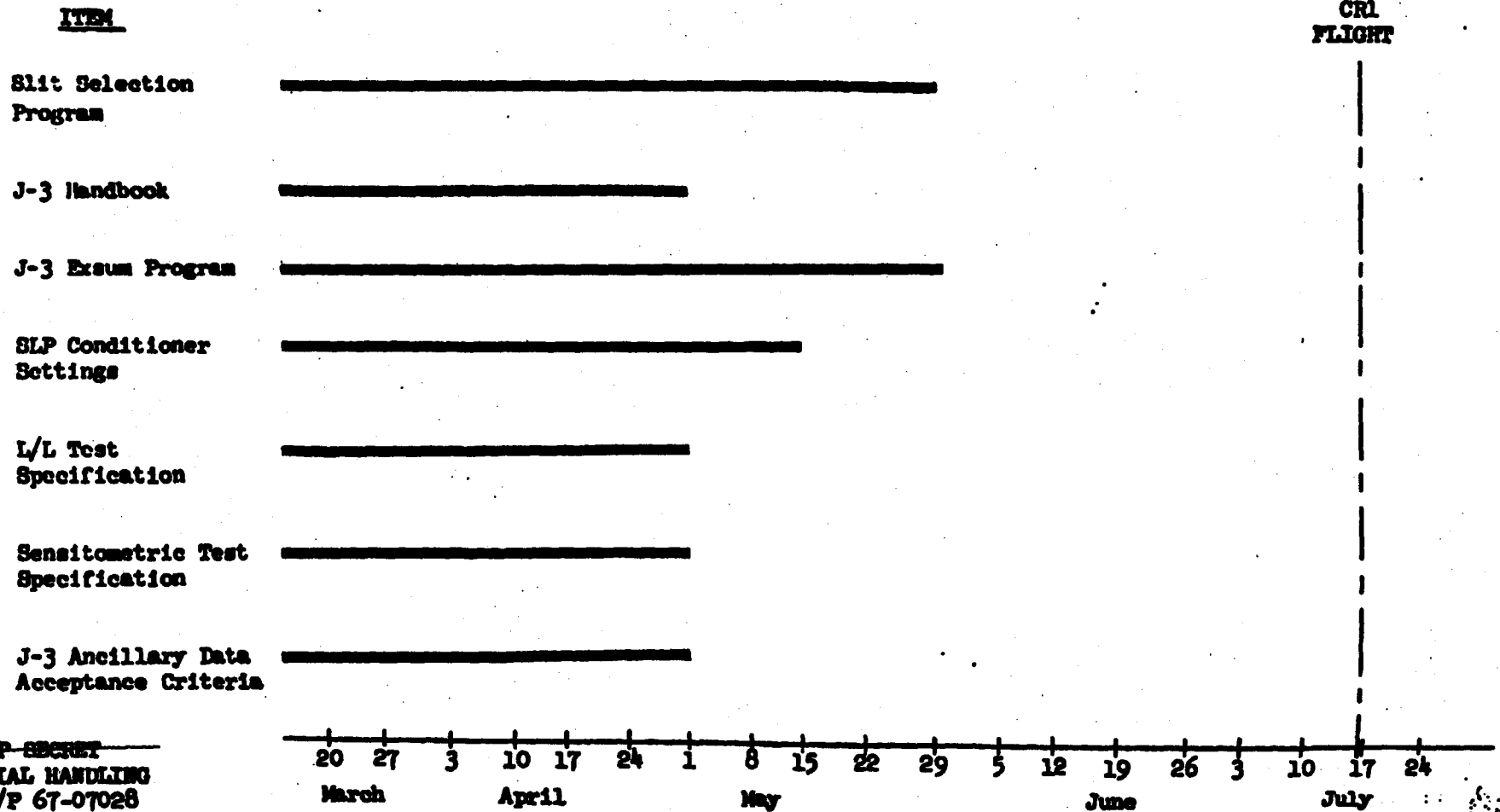
SCHEDULE OF WORK IN PROGRESS



~~TOP SECRET~~
 C/SPECIAL HANDLING
 NO. A/P 67-07028

~~TOP SECRET~~
C/SPECIAL HANDLING
NO. A/P 67-07028

SCHEDULE OF WORK IN PROGRESS



~~TOP SECRET~~
C/SPECIAL HANDLING
NO. A/P 67-07028