

~~CONFIDENTIAL~~

Print 26 June 58

WDTR

MEMORANDUM FOR COLONEL TERHUNE

SUBJECT: Booster-117L Integration Plan - AFMTC

1. The WS 315 and WS 107A-1 missiles, minus adapter and nose cone, will be used as boosters for the WS 117L vehicle to place the 117L vehicle into a pre-arranged coast condition in space prior to orbital injection.
2. Examination of the WS 117L Flight Schedule indicates that immediate action must be initiated on the part of the WS 315, WS 107A-1 and WS 117L program offices and associated contractors, to assure the development of an integrated launch operation capability by October 1958 for the WS 315 boosted 117L vehicle and by June 1959 for the WS 107A-1 boosted 117L vehicle at AFMTC.
3. The following basic plan represents a method proposed by AFMTC which will accomplish flight testing for WS 117L at AFMTC. This organizational plan pointedly stresses a minimum compromise to the WS 315 and WS 107A-1 testing procedures but also a maximum attempt at obtaining the WS 117L objectives.
4. Basic Integrated Operations Plan, Booster-WS 117L, at AFMTC
 - a. All elements of the booster program (WS 315 or WS 107A-1) required for WS 117L testing, whether production items, production or support services, or management and direction functions, will be G.F.E. to WS 117L as prescribed by the production and flight schedule as published by AFMTC.
 - b. The Booster program office will procure the elements required as described in (a) above. This will be accomplished by those contractors who will be involved in WS 117L operations by virtue of hardware, services, or technical direction responsibilities in the Booster programs.
 - c. The identical organizational structure, which presently implements the booster programs, will be maintained in the support of WS 117L support functions. However, the delegated responsibility of the Booster (315-107A-1) organizations will only involve the booster and its specific operation and contributory support of the 117L program.
 - d. The WDCM Test Controller is responsible for the overall conduct of the 117L flight test program. To assist him in this

DOWNGRADED AT 12 YEAR
INTERVALS: NOT AUTOMATICALLY
DECLASSIFIED. DOD DIR 5200.10

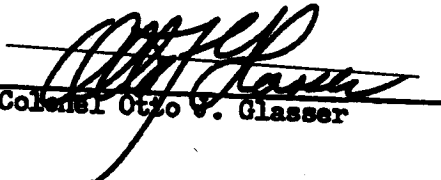
~~CONFIDENTIAL~~

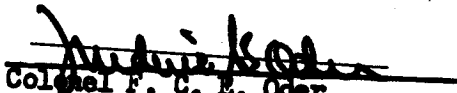
~~CONFIDENTIAL~~


capacity and to maintain consistency with the established procedures the boosters (65 and 75) flight tests, the booster test conductor will serve as the 117L test conductor as outlined on the attached chart. As such he will be bound by mandatory requirements of range conditions, test objectives, and other criteria imposed by the WS 117L test controller.

f. It is emphasized that this method of operation is entirely dependent on adequate high quality manning of the WS 117L Field Office. Failure to provide such manning will make this method of operation unworkable.

4. The inclosed charts illustrate, in general the functions of flight test planning and conduct of countdown. Again, all booster program elements, contributing to the support of WS 117L operations at AFMTC, will be achieved under the same organizational structure as presently exists in the booster (65 and 75) programs.

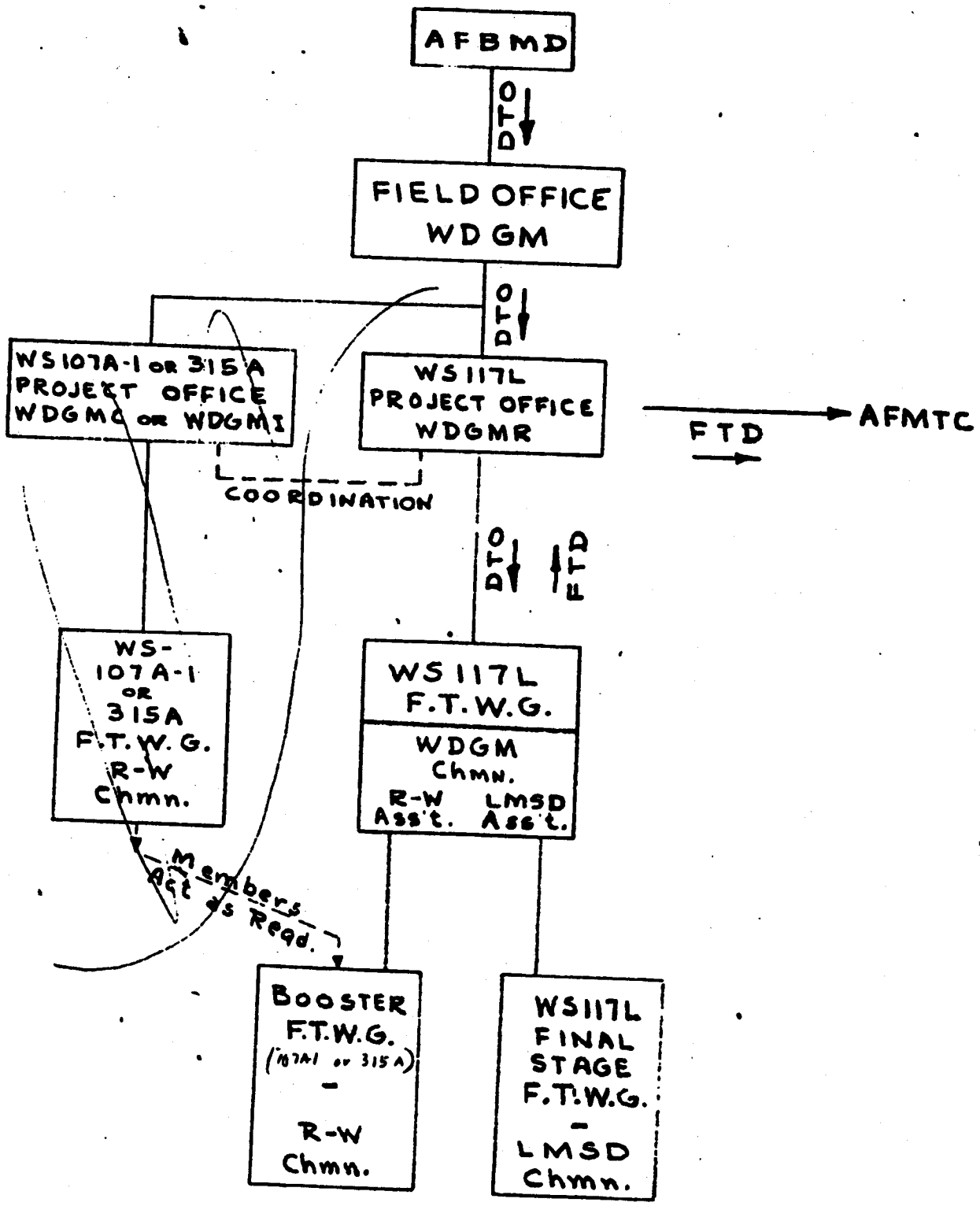

Colonel Otto V. Glasser


Colonel F. C. E. Oder

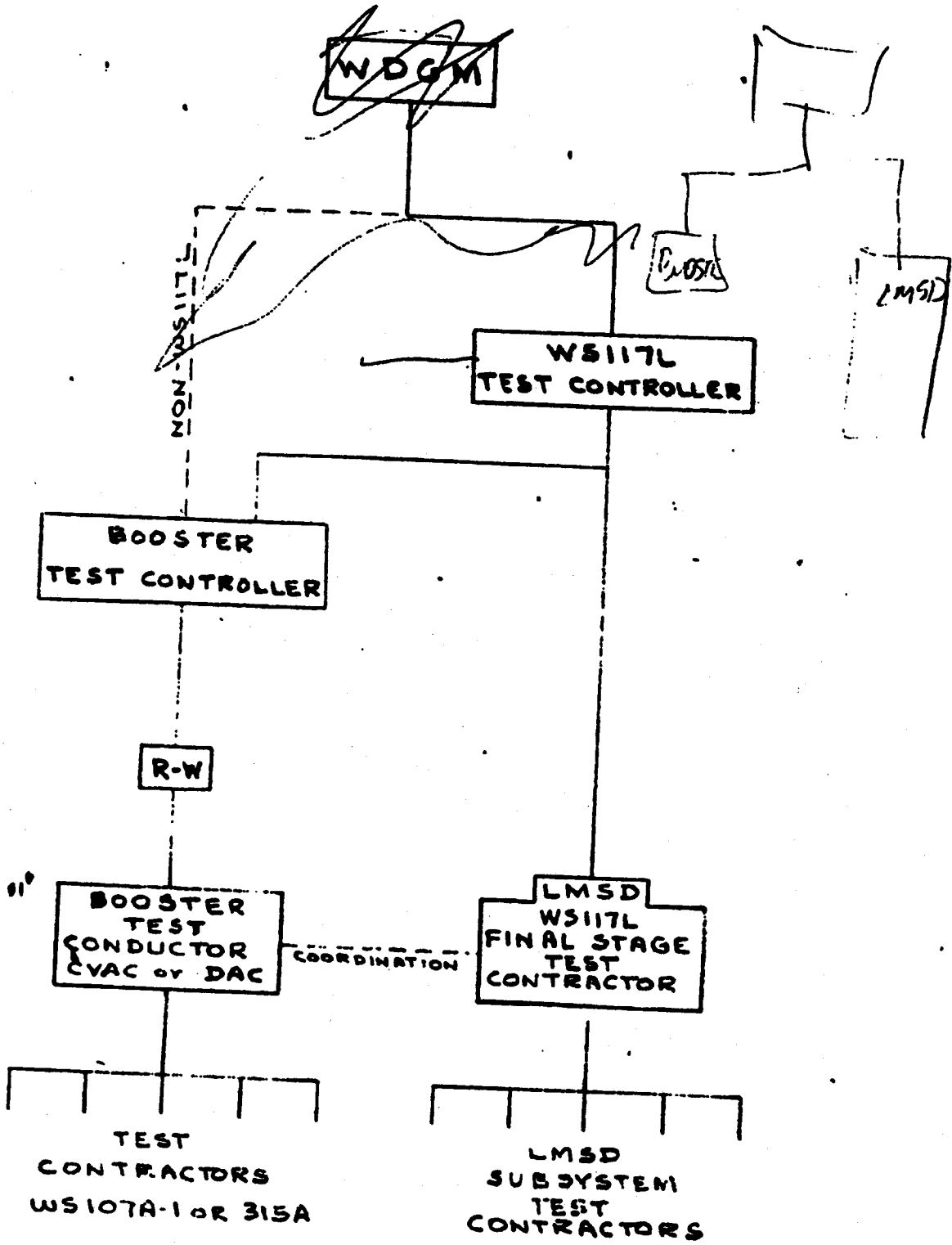

Lt. Colonel R. K. Jacobson


Lt. Colonel F. S. Porter

~~CONFIDENTIAL~~



ORGANIZATION
FOR
WS117L FLIGHT TEST PLANNING AT AFMTC



- WS117L -
 ORGANIZATION FOR TEST COUNTDOWNS
 - AFMTC -